

# SAP PLM interface to Inventor



## Product data management with SAP PLM

Product Lifecycle Management is crucial and begins early in the product development phase. In this process the direct connection of MCAD and ECAD with SAP allows for convenient management of data generated in CAD systems and makes all this information consistently available in the SAP ERP/PLM system to all users. Users and departments such as procurement, production and manufacturing benefit extensively by having access to this information early on in the process.

SAP SE provides with SAP Product Lifecycle Management (PLM) the option to directly link from CAD engineering to SAP PLM by using integrated management of all information created over the life cycle of a product.

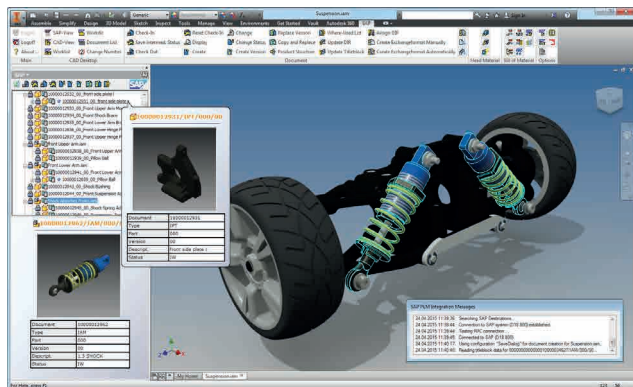


Fig.: Inventor with SAP PLM menus, panels and message window.

## SAP PLM integration to Inventor

As SAP's long-term development partner, CIDEON exclusively develops the SAP PLM integration to Inventor. This integration enables the efficient management of all data that is created during the engineering process with Inventor in SAP.

The SAP PLM integration to Inventor makes design data available to the company at the early stages in the life cycle while keeping the engineers in their familiar design environment.

The link between Inventor and the SAP system allows for administration of all components which

have been designed. Users have access to CAD data which is coordinated through versioning and status administration with SAP PLM. This process allows users to work on one component at the same time without data loss by avoiding inconsistencies (concurrent engineering). This translates into efficient engineering and speeds up the product development process while ensuring timely completion of the design, engineering & downstream tasks.



## Simple management of CAD structures

Inventor assemblies and drawings including all related documents are managed as structures in SAP PLM. This process ensures that appropriate original files are directly linked from Inventor to SAP. All authorized users have access to the original documents stored in a central data base - one single source of truth - which allows for companywide collaboration.

Users can track the development process and apply their appropriate change which reduces the number of redundant operations. With the integrated SAP change management, a change history is always available for the documents.

## SAP PLM integration to Inventor - Advantages for your company -

**Increase efficiency in engineering** through a single, intuitive direct integration between Inventor and SAP.

**Ensure accurate and timely data** exchange throughout the product development process.

**Enable collaboration** of engineering, procurement, production, manufacturing, marketing & sales.

**Reduce operating and maintenance cost** by integrating CAD tools with SAP Business Suite. This reduces the number of interface and steps between engineering and ERP processes. No costs for additional Product Data Management Systems (PDM), since it is fully integrated.

PROCESS CONSULTING

ENGINEERING SOFTWARE

IMPLEMENTATION

GLOBAL SUPPORT

# SAP PLM interface to Inventor



## Highlights

### Ideal interface for Inventor users

- Comfortably operating with SAP directly in Inventor – the familiar work environment for design engineers
- Easy UI and navigation with a comprehensive overview of all required SAP information
- Direct access to SAP objects, e.g., Material Master, Bill of Material, Change Master, ...
- Integrated Viewing

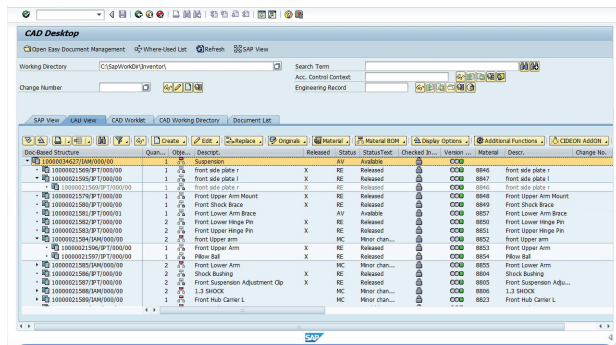


Fig.: SAP CAD Desktop with Inventor assembly structure.

### Simplified product development processes

- Access to the design data is coordinated through versioning so multiple users can easily work on an assembly simultaneously at any time without data loss or inconsistencies.
- Avoidance of doubled data collection and continuous release and approval processes throughout the enterprise (SAP status network)
- Continuous availability of current drawings, models and view files for other departments, e.g., process planning
- Full integration in CAD: SAP Documents and Material Masters can be created quickly and easily directly from the CAD user interface
- Security: SAP object authorizations protect data from unauthorized access
- Creating BOMs directly from the CAD structure: downstream company processes (e.g., assembly, materials management) are available to the construction group

## Functional Overview

### Document Management (DMS)

- Routine activities, such as creating and updating SAP Document Info Records, are automated
- Comprehensive version control functionality in DMS, including digital signature
- Content server for all Inventor files and other design formats
- All related CAD & non-CAD files are stored with the original in SAP Document Management System (DMS)

### Document structure function

- Generate and update SAP document structures from Inventor assemblies
- Check-In / Check-Out of all assembly original-/ additional files
- Block editing of checked-out documents

### Text field maintenance

- Automatically via material master, document info record, change history, classification and other SAP information

### Parts lists and BOMs

- Automatic generation of SAP Material Masters using information from Inventor, e.g., file properties
- Assignment of parts to associated documents
- Automatic derivation of parts lists from Inventor structures

### Search capabilities

- Search by match-code, object links, where-used reports, classification, queries or in folder structures, assemblies, BOMs, ...
- Search result as preview or list with Excel-like filtering in all columns

### Versions and system requirements

System requirements and additional information, as well as registration to participate in our webinars at no cost, can be found at [www.cideon-software.com](http://www.cideon-software.com)

As of April 2015

CIDEON Software GmbH & Co. KG  
Peterstraße 1 · D-02826 Görlitz  
Phone +49(0)3581 3878-0 · Fax +49(0)3581 3878-19  
[info@cideon-software.com](mailto:info@cideon-software.com) · [www.cideon-software.com](http://www.cideon-software.com)

