



## How To: Install the ProjectPoint™ Client Using SMS

If your company uses Microsoft® Systems Management Server (SMS) to facilitate internal distribution of software, follow the steps below to deploy ProjectPoint™ among the client machines on your network.

**Note:** The following steps must be performed on a server machine running SMS 2.0 with service pack 2 or 3.

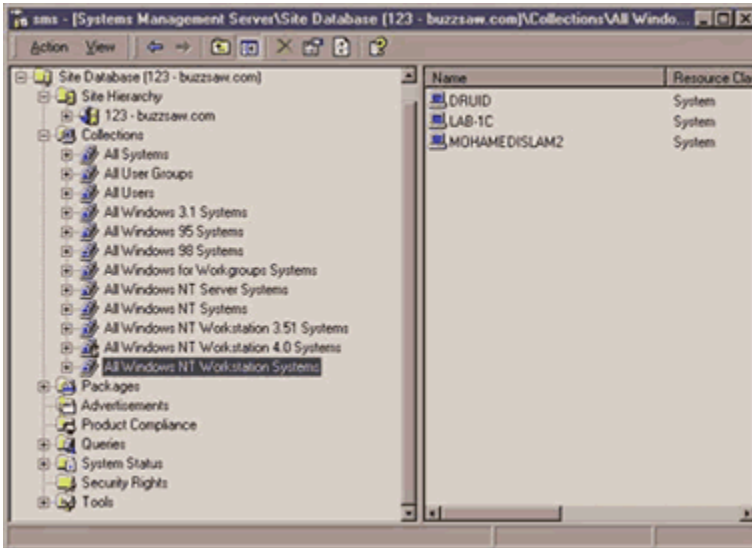
You must have the PPoint3\_en.exe installer available on your network before you can advertise the program to client machines. If you have not yet obtained the ProjectPoint installer, download it from our Support Center.

To accept and install software advertised with SMS, read the Accepting and Installing an Advertised Program section below.

To deploy ProjectPoint with SMS, follow these steps:

1. From your desktop, open the Systems Management Server console.
2. In the Site Database directory, expand the Site Hierarchy directory, then the Collections directory.
3. In the Collections directory, select the desired group of client machines. In the example below, the group All Windows NT Workstation Systems is highlighted.

## How To: Install the ProjectPoint Client Using SMS



4. Right-click, select All Tasks from the menu, and then select Distribute Software.

The Distribute Software Wizard will appear.

5. To begin using the wizard, click **Next**.

You will now be asked to choose the software you want to distribute.

6. Select the radio button next to the text "Create a new package and program," then click **Next**.
7. Enter information — name, version, publisher, language, etc. — to describe the software package you are distributing. Then click **Next**.

**Note:** In the Version field, enter the number that corresponds to the version of ProjectPoint you have downloaded (e.g., 3.0.605.19). In the Publisher field, enter "Autodesk, Inc."

8. Select the radio button next to the text "Always obtain files from a source directory," then click **Next**.

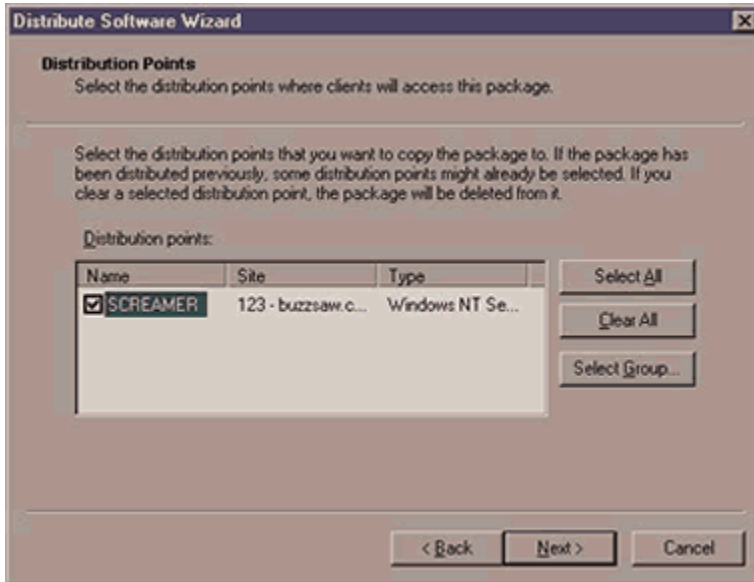
You will now specify the directory containing the source files you wish to use.

9. In the section marked "Source directory location," select the radio button next to the text "Local drive on site server" if the ProjectPoint installer, PPoint3\_en.exe, is located on the same server as SMS. Otherwise, select the "Network path (UNC name)" radio button. Then click **Next**.

**Optional:** Click the **Browse** button to locate the appropriate directory.

**Note:** Whichever network path you choose, make sure that it is accessible to the target group of client machines.

10. Select the point of distribution that clients will use to access the software. In the section labeled "Distribution points," select the check box next to the appropriate server name.



To make a package available to clients from a specified group of servers, click the **Select Group** button and choose the group you want.

**Note:** In SMS, you can combine individual distribution points into one or several groups. To make a software package available in this manner, the group(s) must already have been created.

When you have finished making your distribution selections, click **Next**.

11. Enter information to identify the software being distributed and to specify how the installer should be executed.

In the Name field, enter "ProjectPoint client distribution".

**Important:** In the field named Command line, enter **PPoint3\_en.exe -a silent**. Adding "-a silent" as indicated will allow ProjectPoint to be installed without prompting clients to participate in the installation process. This method of installation is recommended.

Click **Next**. You will now select the conditions under which the software will operate.

12. Deselect the "User input required" check box, then select the "Run with administrative rights" check box. Leave the other program properties options as they appear.

Click **Next**. You will now determine how you want to advertise to client machines the software to be distributed.

13. Select the "Yes" radio button to advertise the ProjectPoint software to a collection of client machines. Then click **Next**.

14. Select the radio button next to the text "Advertise the program to an existing collection."

**Optional:** To advertise the software to client machines using a specific operating system, click the **Browse** button and then select the target client category. The default selection is set to all NT 4.0 workstations.

Click **Next**.

15. Enter the name of the software package advertisement that client machines will receive. The name you choose will be displayed to clients as part of the advertisement.

**Note:** Based on information you entered on previous screens of the wizard, the Name field will already contain a name for your advertisement. You may change the name as you wish.

**Optional:** Enter a comment about the advertisement.

When you have finished entering advertisement information, click **Next**.

16. Using the date and time drop-down boxes, determine when the software will be advertised. Next, regarding when the advertisement should expire, select the "No" radio button ("This advertisement never expires.").

**Optional:** If you want the advertisement to expire, choose the "Yes" radio button and select an expiration date and time.

Click **Next**.

17. Specify whether to assign the software. If you assign the program, it will automatically be deployed — after the date and time you specify — on client machines that have not already run the software.

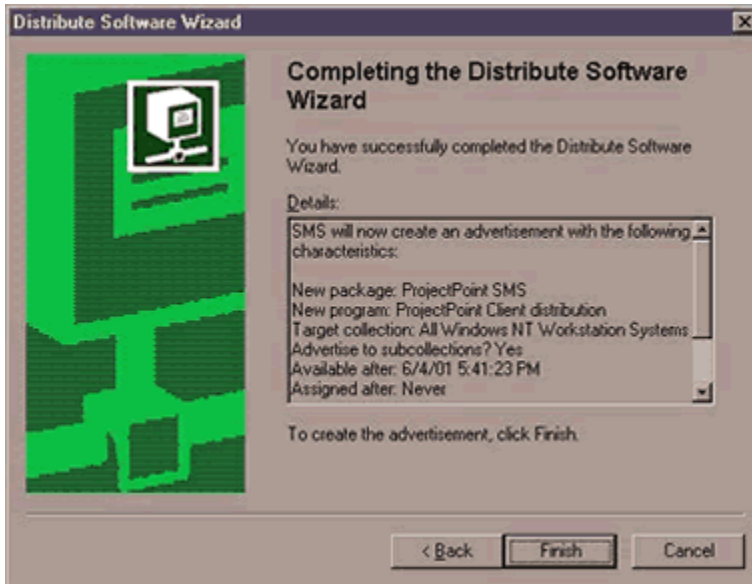
It is recommended that you select the "No" radio button ("Do not assign the program.").

**Optional:** If you select the "Yes" radio button, choose a date and time after which the program will be assigned to client machines.

**Note:** If the program is assigned while the machine is in operation, the machine will be restarted automatically.

When you have finished, click **Next**.

18. In the Completing the Distribute Software Wizard screen, verify the settings you have chosen.

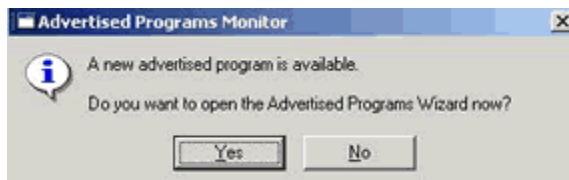


To create the software advertisement, click **Finish**. If you wish to return to a previous screen and change information you have entered, click **Back**.

To see the software advertisement in your SMS console, access the Packages directory (in the Site Database directory, beneath the Collections branch). The package will be named according to information you provided; e.g., Autodesk, Inc. ProjectPoint SMS 2.364.1.0.

### Accepting and Installing an Advertised Program

Once the software package is advertised, depending on the SMS server setting, the intended client machines will receive a notification message announcing that an advertised program is available.



1. To begin accepting the package, click **Yes**.  
The Advertised Programs Wizard appears.
2. To begin using the wizard, click **Next**.
3. Select the program you want to run, then click **Next**.
4. To install the software immediately, select the radio button next to the text "Run the selected program now." Then click **Next**.

**Optional:** To schedule the installation of ProjectPoint for a later time, use the date and time drop-down boxes. Though a ProjectPoint installation typically takes less

## How To: Install the ProjectPoint Client Using SMS

than five minutes, actual installation time may vary depending on network traffic (and the number of client machines attempting to install the program at one time).

Click **Finish** to complete the wizard and install ProjectPoint. It is recommended that you exit all other programs before installing the program.

Once the wizard is completed, the ProjectPoint installer, PPoint3\_en.exe, will execute. The ProjectPoint client is extracted and decompressed, and the setup process operates without any user input.

**Note:** In cases where system files are updated and a machine restart is required, the ProjectPoint installer will restart the machine without requiring confirmation from the user.

**autodesk**

Autodesk, Inc.  
The Landmark @ One Market  
Suite 500  
San Francisco, California 94105

Autodesk and Buzzsaw are either registered trademarks or trademarks of Autodesk, Inc., in the USA and other countries. All other brand names, product names, or trademarks belong to their respective holders.

© Copyright 2002 Autodesk, Inc. All rights reserved.