



June 18<sup>th</sup> 2007

## How to prevent the issues of an incorrect page size when printing from AutoCAD 2007 and 2008.

---

It has been observed that in some cases there may be problems with the interaction between AutoCAD 2007/2008 and the selection of page sizes in the HP-GL/2 drivers for HP Designjet T1100, Z6100 and Z2100. This document describes the symptoms of this issue and how to solve them.

### Symptoms

---

Even though the page size and the preview in the AutoCAD plot dialog appear to be fine, the printed page size is incorrect, causing part of the content to be cut or printed to the wrong scale.

### Workaround

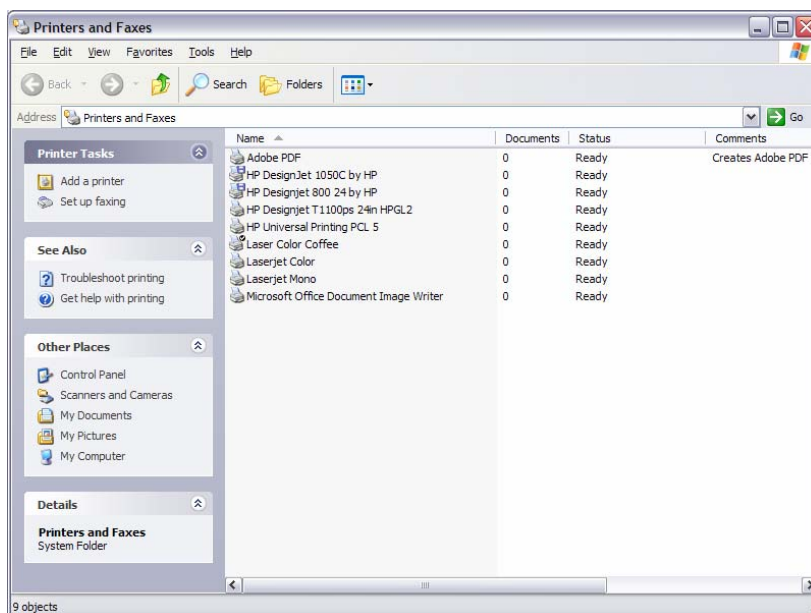
---

This issue is caused by an error in the way the application interacts with the page size selection in the driver. The issue occurs when the default page size in the driver is other than 'Letter'. The page size may well be other than letter in a number of cases, it will all depend on the country and language selected in the Operating System.

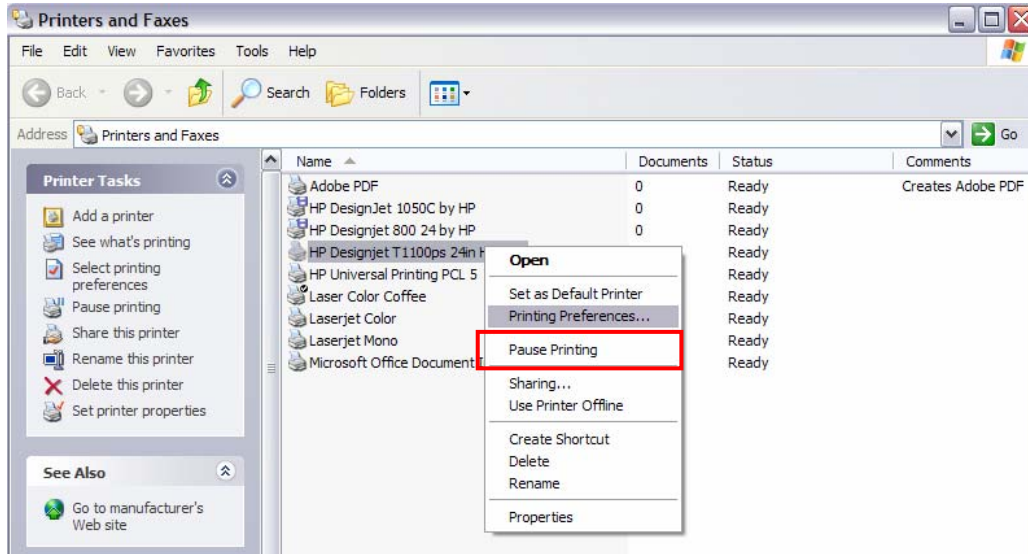
In order to solve the problem, you only needed to change the default page size in the driver to "Letter". Once this change has been done, the selection of page size from AutoCAD 2007 and 2008 will work correctly.

The process to change the default is described here for Windows XP and when working with the HP Designjet T1100:

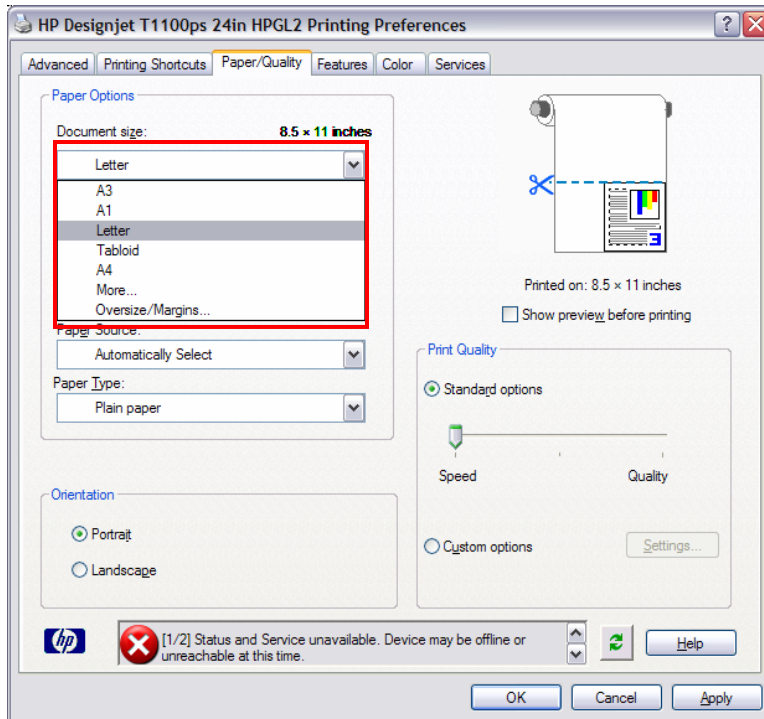
1. Go to Start → Printers and Faxes



2. Right click on the Designjet T1100 HPGL2 queue and click on 'Printing Preferences'



3. On the 'Document size' drop-down list, select 'Letter'. Select 'Apply' and then select 'OK'



4. If AutoCAD 2007 or 2008 was open, close the application and restart it. From now on, drawings from AutoCAD 2007 and 2008 will print correctly.

### Future driver releases

HP is working on incorporating the necessary code to prevent this issue from happening under any conditions in driver releases for all the affected products that will be available in the short term.