

In a continuing effort to provide high quality products, Autodesk has released this update which enables property extraction for Microsoft Outlook MSG files.

This README highlights how to install this update and other important information regarding this update.

Contents

[Description of the Issue](#)

[System Requirements](#)

[Related Updates](#)

[Known Issues](#)

[Warnings](#)

[Installation Instructions](#)

[Configuration](#)

Description of the Issue

When adding Microsoft Outlook MSG files to a Vault, property extraction is not enabled by default. This hotfix, in combination with the following Microsoft utilities, allows property extraction from Outlook message files.

- Microsoft Windows Desktop Search
- Microsoft Windows Desktop Search: Add-in for Outlook saved mail (.msg file) indexing

System Requirements

At least one of the following products must be installed;

Client

- Autodesk Vault 2011 Update 2
- Autodesk Vault Workgroup 2011 Update 2
- Autodesk Vault Collaboration 2011 Update 2
- Autodesk Vault Professional 2011 Update 2

ADMS Server

- Autodesk Data Management Server 2011 Update 2 (Vault)
- Autodesk Data Management Server 2011 Update 2 (Workgroup)
- Autodesk Data Management Server 2011 Update 2 (Collaboration)
- Autodesk Data Management Server 2011 Update 2 (Professional)

Related Updates

- Microsoft [Windows Desktop Search](#)
- Microsoft [Windows Desktop Search: Add-in for Outlook saved mail \(.msg file\) indexing](#)

Known Issues

Warnings

Installation Instructions

1. Download the update to a temporary directory on the Autodesk Data Management Server.
2. Extract the TS15707592_Server.msp file to the temporary directory.
3. Double-click on TS15707592_Server.msp to install the update.
4. Install the update on each Autodesk Data Management Server.
5. Complete the 'Configuration of Property Extraction' section below.
6. Extract the TS15707592_Client.msp file to a temporary directory on a workstation.
7. Double-click on TS15707592_Client.msp to install the update.
8. Install 'Microsoft [Windows Desktop Search: Add-in for Outlook saved mail \(.msg file\) indexing](#)'
9. Repeat the installation on all workstations.

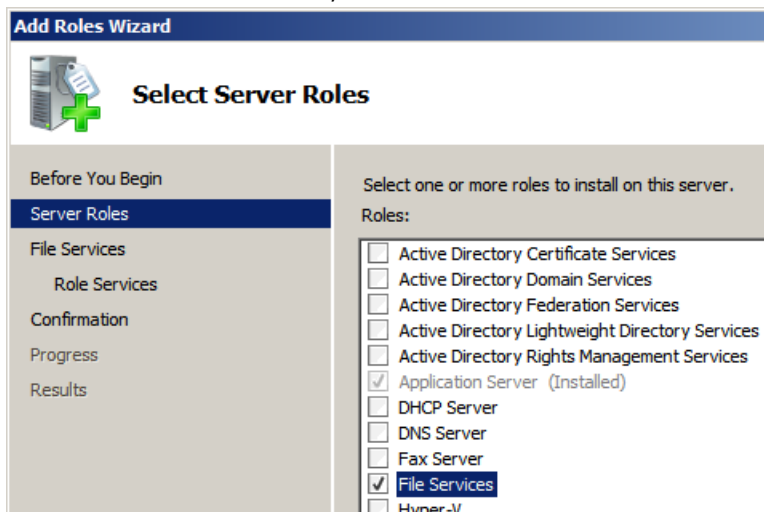
Configuration of Property Extraction (Administrative use only)

Note: These steps must be performed by an administrator to properly enable property extraction.

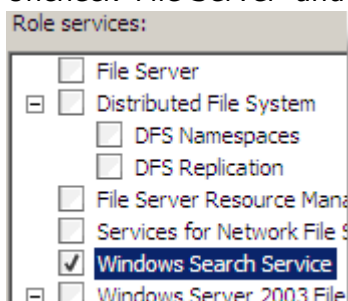
1. Autodesk Data Management Server (ADMS) set-up and configuration.

Windows 2008 (ADMS Server)

- Start 'Server Manager'
- Right click on 'Roles' and select 'Add Roles'
- In the Add Roles Wizard, check 'File Services' and select Next



- Uncheck 'File Server' and check 'Windows Search Service' then click Next



- Do not check 'Local Disk (C:)', then click Next

Volumes:		
Name	Capacity	Free Space
<input type="checkbox"/> Local Disk (C:)	199.9 GB	167.7 GB

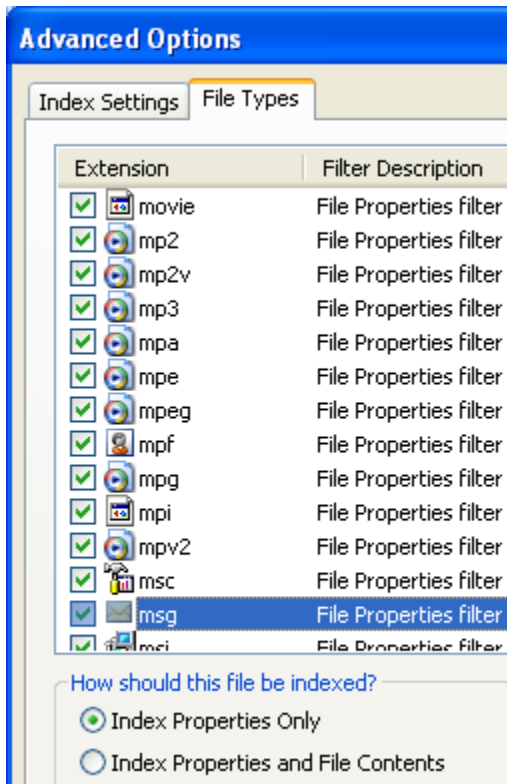
- Select Install

Note: Indexing a volume is an operation that can affect system performance, especially when the volume being indexed is the system volume. For best results, you should select volumes to index that are used for hosting shared folders only.

- Install the Microsoft [Windows Desktop Search: Add-in for Outlook saved mail \(.msg file\) indexing](#) (MsgFilt.dll)

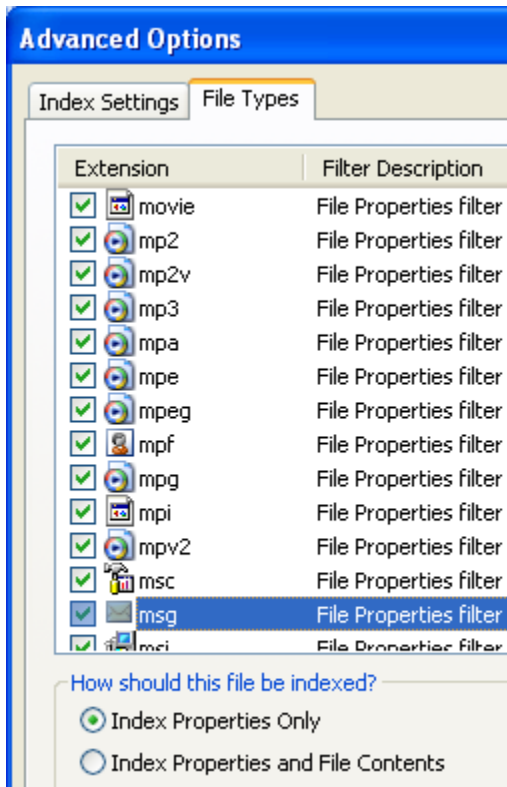
Windows XP (ADMS Server)

- Install [Windows Desktop Search](#)
- Install the Microsoft [Windows Desktop Search: Add-in for Outlook saved mail \(.msg file\) indexing](#) (MsgFilt.dll)
- Go to Control Panel | Indexing Options | Advanced button | File Types tab
- Find the MSG extension and set the index to 'Index Properties Only'



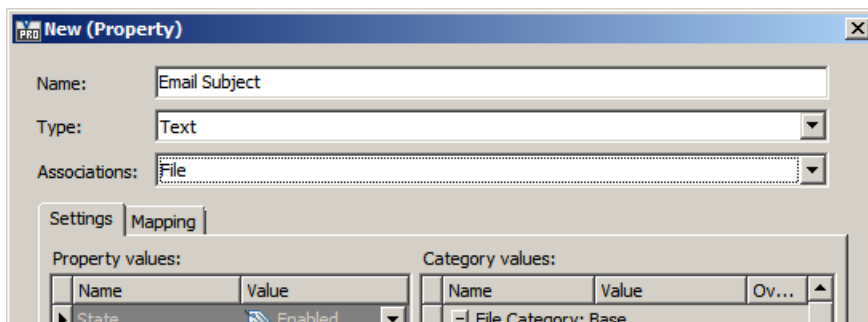
Windows Vista/7 (ADMS Server)

- Install the Microsoft [Windows Desktop Search: Add-in for Outlook saved mail \(.msg file\) indexing](#) (MsgFilt.dll)
- Go to Control Panel | Indexing Options | Advanced button | File Types tab. Find the MSG extension and set the index to 'Index Properties Only'

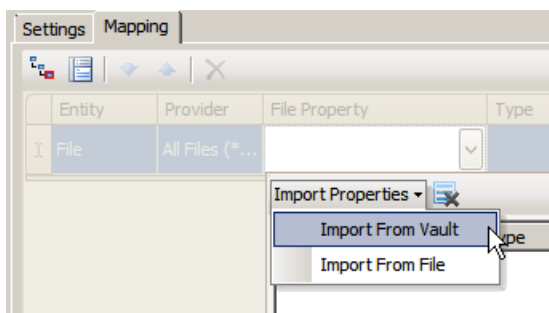


2. Using the Vault client, User Defined Properties (UDP) must be created and mapped to the extracted MSG properties.

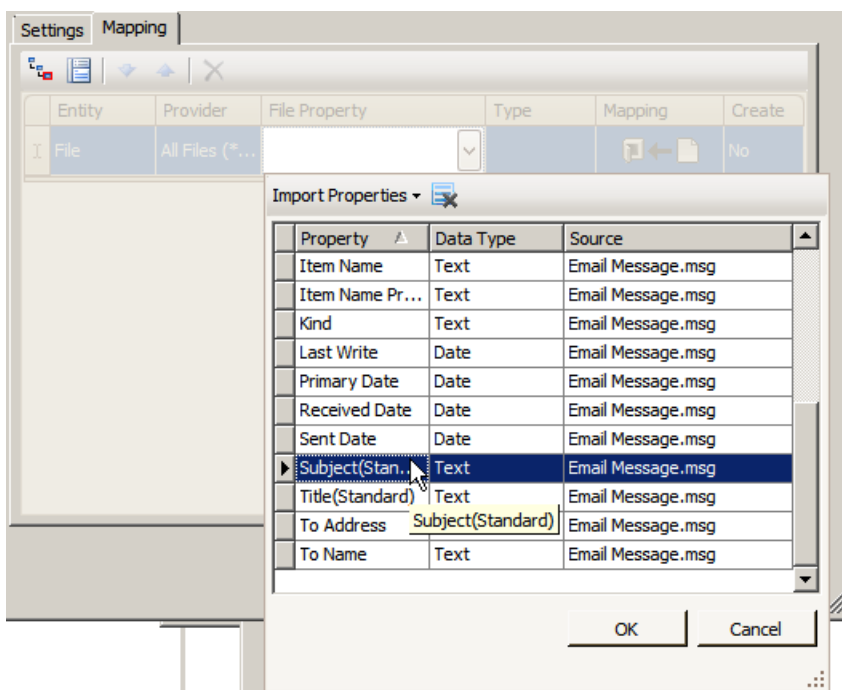
- In Vault client select Tools | Administration | Vault Settings | Behaviors tab | Properties... button
- Select New to create a new UDP
- Enter a UDP Name, select data Type and make the appropriate Associations



- Select the Mapping tab, click in the white space under File Property and click on Import Properties



- Select Import from Vault or Import from File and select a sample file from the Vault or on local disk, respectively.
 - **NOTE:** 'Import From File' requires the installation of 'Microsoft [Windows Desktop Search: Add-in for Outlook saved mail \(.msg file\) indexing](#)' for each workstation to enable file property extraction.
- Select the desired MSG property



Note: When selecting Import from Vault a property reindex or adding a new MSG file to the Vault will be required, to perform property extraction, before the MSG properties will be displayed.

- Repeat the creation and mapping of new UPDs for each email property desired

Legal Notice

Microsoft Office, Microsoft Outlook and Microsoft Windows Desktop Search are either trademarks or registered trademarks of Microsoft Corporation in the United States and/or other countries.
Copyright © 2010 Autodesk, Inc.