

Autodesk Asset Locator

Autodesk®

December 2009

© 2010 Autodesk, Inc. All Rights Reserved. Except as otherwise permitted by Autodesk, Inc., this publication, or parts thereof, may not be reproduced in any form, by any method, for any purpose.

Certain materials included in this publication are reprinted with the permission of the copyright holder.

Trademarks

The following are registered trademarks or trademarks of Autodesk, Inc., and/or its subsidiaries and/or affiliates in the USA and other countries: 3DEC (design/logo), 3December, 3December.com, 3ds Max, Algor, Alias, Alias (swirl design/logo), AliasStudio, AliasWavefront (design/logo), ATC, AUGI, AutoCAD, AutoCAD Learning Assistance, AutoCAD LT, AutoCAD Simulator, AutoCAD SQL Extension, AutoCAD SQL Interface, Autodesk, Autodesk Envision, Autodesk Intent, Autodesk Inventor, Autodesk Map, Autodesk MapGuide, Autodesk Streamline, AutoLISP, AutoSnap, AutoSketch, AutoTrack, Backburner, Backdraft, Built with ObjectARX (logo), Burn, Buzzsaw, CAiCE, Civil 3D, Cleaner, Cleaner Central, ClearScale, Colour Warper, Combustion, Communication Specification, Constructware, Content Explorer, Dancing Baby (image), DesignCenter, Design Doctor, Designer's Toolkit, DesignKids, DesignProf, DesignServer, DesignStudio, Design Web Format, Discreet, DWF, DWG, DWG (logo), DWG Extreme, DWG TrueConvert, DWG TrueView, DXF, Ecotect, Exposure, Extending the Design Team, Face Robot, FBX, Fempro, Fire, Flame, Flare, Flint, FMDesktop, Freewheel, GDX Driver, Green Building Studio, Heads-up Design, Heidi, HumanIK, IDEA Server, i-drop, ImageModeler, iMOUT, Incinerator, Inferno, Inventor, Inventor LT, Kaydara, Kaydara (design/logo), Kynapse, Kynogon, LandXplorer, Lustre, MatchMover, Maya, Mechanical Desktop, Moldflow, Moonbox, MotionBuilder, Movimento, MPA, MPA (design/logo), Moldflow Plastics Advisers, MPI, Moldflow Plastics Insight, MPX, MPX (design/logo), Moldflow Plastics Xpert, Mudbox, Multi-Master Editing, Navisworks, ObjectARX, ObjectDBX, Open Reality, Opticore, Opticore Opus, Pipeplus, PolarSnap, PortfolioWall, Powered with Autodesk Technology, Productstream, ProjectPoint, ProMaterials, RasterDWG, RealDWG, Real-time Roto, Recognize, Render Queue, Retimer, Reveal, Revit, Showcase, ShowMotion, SketchBook, Smoke, Softimage, SoftimageXSI (design/logo), Sparks, SteeringWheels, Stitcher, Stone, StudioTools, ToolClip, Topobase, Toxik, TrustedDWG, ViewCube, Visual, Visual LISP, Volo, Vtour, Wire, Wiretap, WiretapCentral, XSI, and XSI (design/logo).

All other brand names, product names or trademarks belong to their respective holders.

Disclaimer

THIS PUBLICATION AND THE INFORMATION CONTAINED HEREIN IS MADE AVAILABLE BY AUTODESK, INC. "AS IS." AUTODESK, INC. DISCLAIMS ALL WARRANTIES, EITHER EXPRESS OR IMPLIED, INCLUDING BUT NOT LIMITED TO ANY IMPLIED WARRANTIES OF MERCHANTABILITY OR FITNESS FOR A PARTICULAR PURPOSE REGARDING THESE MATERIALS.

Published by:
Autodesk, Inc.
111 McInnis Parkway
San Rafael, CA 94903, USA

Contents

Chapter 1	Autodesk Asset Locator	1
	Supported Operating Systems	1
	Installing Autodesk Asset Locator	2
	Define a Search	4
	Run or Resume a Search	6
	Print or Export the Report View	9
	Autodesk Asset Locator Window	13
	Product Search Definition Dialog Box	15
	Open Search Definition Dialog Box	16
	Modify Search Definition Dialog Box	17
	Search and Viewer Options Dialog Box	17
	Autodesk Asset Locator Report View	19
	Export Report Dialog Box	20
	Autodesk Asset Locator at the DOS Prompt	21
	Index	23

Autodesk Asset Locator

1

Autodesk® Asset Locator (AAL) is an updated version of Autodesk Product Manager. AAL searches a network and reports information about each Autodesk product installed, including programs, service packs, extensions, and object enablers. You can save the results of the search in a file for use in a spreadsheet or database application.

Supported Operating Systems

Autodesk Asset Locator, is supported on the following 32 and 64-bit operating systems.

Platform	Operating System
Windows XP 32-bit	■ Windows® XP Home
	■ Windows XP Professional
Windows XP 64-bit	■ Windows XP Home
	■ Windows XP Professional
Vista 32-bit	■ Windows Vista Enterprise
	■ Windows Vista Business
	■ Windows Vista Ultimate
	■ Windows Vista Home Basic
	■ Windows Vista Home Premium
Vista 64-bit	■ Windows Vista Enterprise

Platform	Operating System
	<ul style="list-style-type: none"> ■ Windows Vista Business ■ Windows Vista Ultimate ■ Windows Vista Home Premium
Windows 7 32-bit	<ul style="list-style-type: none"> ■ Windows 7 Starter ■ Windows 7 Home Basic ■ Windows 7 Home Premium ■ Windows 7 Professional ■ Windows 7 Ultimate ■ Windows 7 Enterprise
Windows 7 64-bit	<ul style="list-style-type: none"> ■ Windows 7 Home Premium ■ Windows 7 Professional ■ Windows 7 Ultimate ■ Windows 7 Enterprise
Browser	Internet Explorer® 6.0 or later

Installing Autodesk Asset Locator

Autodesk Asset Locator can be installed using either of the two methods described below.

To install AAL using the executable file

NOTE The Autodesk Product Manager is no longer supported by Autodesk. It is recommended you manually uninstall APM before running AAL.

- 1 Download and copy the self-extracting *AAL1.0_Installer.exe* file to a destination folder on your computer.
- 2 In that folder, double-click the *AAL1.0_Installer.exe* file.

- 3 In the WinRAR self-extracting archive dialog, click Install to start the extraction process to your destination folder, or use the Browse button to select a different destination folder. You can also enter the folder name manually.

If you select a folder that does not exist, the folder will be created automatically before the extraction process begins.

- 4 When the extraction process ends, the Autodesk Asset Locator Installation wizard is displayed, click Install Products.
- 5 Review the Autodesk software license agreement. Click I Accept, and then click Next.
- 6 In the Begin Installation page, select Install, then select Yes to the configuration warning message.

If you wish to change the installation folder location, click the Configure button. Enter a new install path, or Browse to a different location. After making your changes, click Configuration Complete, then click Install.

NOTE Changing the installation folder location is the only configuration option available for AAL.

- 7 In the Installation Complete page, click Finish.

To install AAL from the Install Tools and Utilities option from product media

NOTE The Autodesk Product Manager is no longer supported by Autodesk. It is recommended you manually uninstall APM before running AAL.

- 1 In the product installation wizard, select a language for the install instructions. Click Install Tools and Utilities.
- 2 Select Autodesk Asset Locator. Click Next.
- 3 Review the Autodesk software license agreement. Click I Accept, and then click Next.
- 4 In the Begin Installation page, select Install, then select Yes to the configuration warning message.

If you wish to change the installation folder location, click the Configure button. Enter a new install path, or Browse to a different location. After making your changes, click Configuration Complete, then click Install.

NOTE Changing the installation folder location is the only configuration option available for AAL.

- 5 In the Installation Complete page, click Finish.

Define a Search

You use a search definition to specify the Autodesk products to look for and the computers to search. You can create as many search definitions as you need and save them to be run later.

The products to search for are listed in groups, and you can select one or more groups or all groups. A list of all products that Autodesk Asset Locator can search for is available on the Help menu, or when you create a new search.

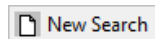
When you create a search definition, you specify the computers to be searched. You can select a network name or a domain name, or you can select individual computers. You can also add a computer to the search definition by name. Autodesk Asset Locator works by searching the registry of each computer.

NOTE In order to complete a network search you must have domain administrative privileges. Insufficient privileges will return incomplete search data.

The Available Network Computers list can display only the names of computers that are currently available. An available computer is a computer that is currently logged on to the network or a computer that is started and at a login screen or locked. Whether or not the computer is currently available, you can add it by name to the Computers Added to Search list. At the time you run the search, if the computer is not available, Autodesk Asset Locator reports that it was not searched.

To create and save a search definition

- 1 To use AAL go to Start ► All Programs or Programs ► Autodesk ► Tools and Utilities ► Autodesk Asset Locator.
- 2 Click File menu ► New Search, or click the New Search button.



- 3 In the Product Search Definition dialog box, enter a name for the search definition, or use the default name.

- 4 Under Products to Locate, select the product group you want to search for, or select All Products.

NOTE To display a list of all products in a group, click the plus sign to the left of the group name.

- 5 Under Computers to Search, select networks, subnetworks, domains, or individual computers in Available Network Computers. Then click the double, right-facing arrow button to add them to Computers Added to Search. To remove a name, select the name you want to remove and click the left arrow button.

In addition to using the arrow buttons, you can add computer names, refresh or browse a list, or remove and enter computer names in the Available Network Computers and Computers Added to Search areas, by right-clicking in those areas, and then choosing your action. If you are listing the names from a text file, make sure you separate the names by a comma.



To select more than one item in either list, hold down the CTRL key while you select items. To select consecutive items, hold down the SHIFT key and select the first and last items.

- 6 Click OK to save the search definition.

To modify an existing search definition

- 1 Click File menu ► Modify Search.
- 2 In the Modify Search Definition dialog box, select a search definition and click Modify.
- 3 In the Product Search Definition dialog box, enter a new name for the search definition, or use the existing name.
- 4 Under Products to Locate, select the product group you want to search for, or select All Products.
To display a list of all products in a group, click the plus sign to the left of the group name.
- 5 Under Computers to Search, select networks, subnetworks, domains, or individual computers in Available Network Computers. Then click the

double, right-facing arrow to add them to Computers Added to Search. To remove a name, select the name you want to remove and click the left arrow.

- 6 Click OK to save the modified search definition.

To refresh the Available Network Computers list

- 1 In the Product Search Definition dialog box, select any item in the Available Network Computers list.
- 2 Right-click the selected item, and then click Refresh Computers List. Or click the Refresh button located beside Available Network Computers:



The list is updated to display computers that are currently available to be searched. An available computer is a computer that is currently logged on to the network or a computer that is started and at a login screen or locked.

Run or Resume a Search

You can run a defined search multiple times. Each time, you can either generate a new report or add to the results from an earlier search. The Report View in the Autodesk Asset Locator window displays the columns you specify.

The options you set before you run the search control how many times Autodesk Asset Locator attempts to search computers that were unavailable during the initial run.

You can also control which data columns are displayed in the Report View. The Columns to Display list can be reordered.

Autodesk Asset Locator works by searching the registry of each available computer. An available computer is a computer that is currently logged on to the network or a computer that is started and at a login screen or locked. If you entered a computer in the search definition by either selecting it individually or entering its name, and it is not available at the time the search is run, Autodesk Asset Locator reports that it was not searched.

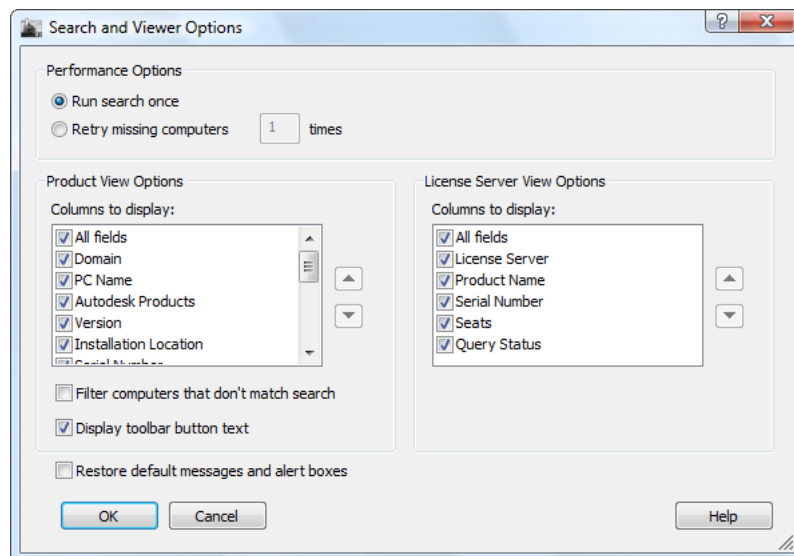
To obtain the most complete results, it is recommended that you run a search at a time when most of the computers on the network are available. You can also select individual computers or enter them by name to ensure that any computers that are not available at the time the search is run are reported as not searched.

NOTE In order to complete a network search you must have domain administrative privileges. Insufficient privileges will return incomplete search data.

If you pause a search while it is running and then run it again, the new results are added to the results from the original search. To start the search from the beginning again, clear the results from the Report View.

The report lists results for every computer that was included in the search definition. If you want a report that lists only the computers that match the search criteria, select the filter option.

You can specify which columns to display in the Report View from the Product View Options or License Server View Options tabs. You can also display labels next to the toolbar buttons and restore display of warnings and alerts.



To specify how many times to run the search

- 1 Click Options menu ► Search and Viewer Options.
- 2 In the Search and Viewer Options dialog box, under Performance Options, select one of the following options:
 - **Run Search Once** The search goes through the list of computers in the search definition only once.
 - **Retry Missing Computers x Times** The search goes through the list of computers in the search definition once and then attempts to search

the computers that were unavailable during the first run. You specify how many times to try before stopping.

- 3 Click OK.

To specify which columns to display in the search results

- 1 Click Options menu ► Search and Viewer Options.
- 2 In the Search and Viewer Options dialog box, under Columns to Display, select All Fields or select the columns you want to be displayed in the Report View.
- 3 To move a column name up or down in the list, select the column name and click the Move Up or Move Down buttons to move it one position.
- 4 Click OK.

To display only the computers that match the search criteria

- 1 Click Options menu ► Search and Viewer Options.
- 2 In the Search and Viewer Options dialog box, select Filter Computers That Don't Match Search.
If you do not select this option, results are displayed for all computers that were included in the search definition.
- 3 Click OK.

To display labels next to toolbar buttons

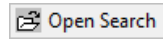
- 1 Click Options menu ► Search and Viewer Options.
- 2 In the Search and Viewer Options dialog box, select or clear the Display Toolbar Button Text option.
- 3 Click OK.

To restore default messages and alert boxes

- 1 Click Options menu ► Search and Viewer Options.
- 2 In the Search and Viewer Options dialog box, select Restore Default Messages and Alert Boxes.
- 3 Click OK.

To run a defined search

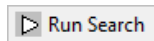
- 1 Click File menu ► Open Search or use the Open Search button.



- 2 In the Open Search Definition dialog box, select the search to run and click OK.
If the search definition you select has search results that have not been saved, you can save or discard them before you run the search again.
- 3 Click Options menu ► Search and Viewer Options.
- 4 In the Search and Viewer Options dialog box, under Performance Options, select the number of times to run the search.
- 5 Under Columns to Display (Product View *and* License Server View Options), select All Fields or select the columns you want to be displayed in the Report Views.
- 6 Click OK to close the dialog box.
- 7 Click the Search menu ► Run Search.

To resume a search that is stopped and add new data to the results

- Click the Search menu ► Run Search or use the Run Search button.



To clear partial results and restart a search that is stopped

- 1 Click the Search menu ► Clear Search.
- 2 Click the Search menu ► Run Search.

Print or Export the Report View

You can print the Report View from the Autodesk Asset Locator window or export the results to a file for use in a spreadsheet or database program.

You can use the filter option in the [Search and Viewer Options Dialog Box](#) on page 17 to display only the computers that match the search criteria.

Autodesk Asset Locator reports the following information for each Autodesk product found installed on a computer. In the Report View, if more than one product is found installed on a computer, the computer is listed in a new row and the information is provided for the additional product.

Product Information tab

- The name of the domain and computer searched
- The name and version or release number of the Autodesk product found on the computer
- The location of the Autodesk product found
- The serial number and language of the Autodesk product found
- The personalization information: user name, organization, dealer name, and dealer telephone number
- The service pack name
- How the product is installed: stand-alone, network-server, network-client, or network-shared (thin client)
- The status of the search of the computer, including whether Autodesk Asset Locator was unable to access the computer or was denied access
- The date and time the computer was searched

License Server Information tab

- The name of the license server searched
- The name of the Autodesk product found, and the product's serial number
- The number of Autodesk licenses (seats)
- The status of the search

You can use standard Microsoft Windows procedures in the Report View to change the width of columns, hide columns, and move columns. You can also sort the results by column (for example, by product found). Use CTRL+C to copy data to the Clipboard in CSV (comma-delimited) file format.

For other formatting options, export the results to a file to be used in a spreadsheet or database program.

The Subscription button provides access to the Autodesk Software Subscription Coverage Report. The subscription report contains the following information:

- Contract number
- Contract coordinator (the purchasing agent or financial decision maker)
- Contract validity dates
- Reseller (if available)
- Licenses
- Serial number(s)
- Seats
- Fulfillment coordinator for the contract (usually the CAD manager)
- Technical coordinator for the contract
- Support
- Deployment
- Total for the product group

To change the width of a column

- 1 Move the cursor over the line that separates the column you want to change from the column on its right.
The cursor changes to a double-headed horizontal arrow.
- 2 Drag left to decrease the width, or drag right to increase the width.
- 3 Double-click to expand the column to accommodate display of its longest content.
The column heading is not affected when you expand the column to accommodate its contents. Use the dragging method for the column heading.

To sort search results by column in the Report View

- Click a column heading to sort the list by that column. Click again to sort the list in reverse.
Shortcut Right-click and then click Sort Ascending or Sort Descending.

To hide a column

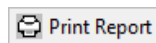
- 1 Move the cursor over the line that separates the column you want to change from the column on its right.
The cursor changes to a double-headed horizontal arrow.
- 2 Drag the column separator at the right of the column heading to the left until the column heading disappears. To restore a hidden column, drag right.
Shortcut Right-click and click Hide Column. To restore all hidden columns, click Show All Columns.

To move a column

- Drag the column heading of the column that you want to move into the column heading that you want to directly precede that column.

To print the results from the Report View

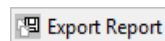
- Click File menu ► Print Report or use the Print Report button.



The printed report includes all columns and rows, not just visible columns and rows. The printed reports contain results from the Product Information tab first with the pages numbered X of Y, followed by search results from the License Server Information tab. Page numbering for the License Server Information report restarts at 1.

To export the results from the Report View

- 1 Click File menu ► Export Report or use the Export Report button.



- 2 In the Export Report dialog box, enter a file name for the report file in the File Name box, or use the default name.
- 3 Specify a location for the exported report file in the Folders list. If the list is not showing, click the Browse Folders button.
- 4 In Save As Type, select a file format:
 - Microsoft Excel® 2000 Workbook (*.xls)
 - Microsoft Access™ 2000 Database (*.mdb)

- Comma Delimited Text (*.csv)

The default format is *.xls.

- 5 Click Save to export the file.

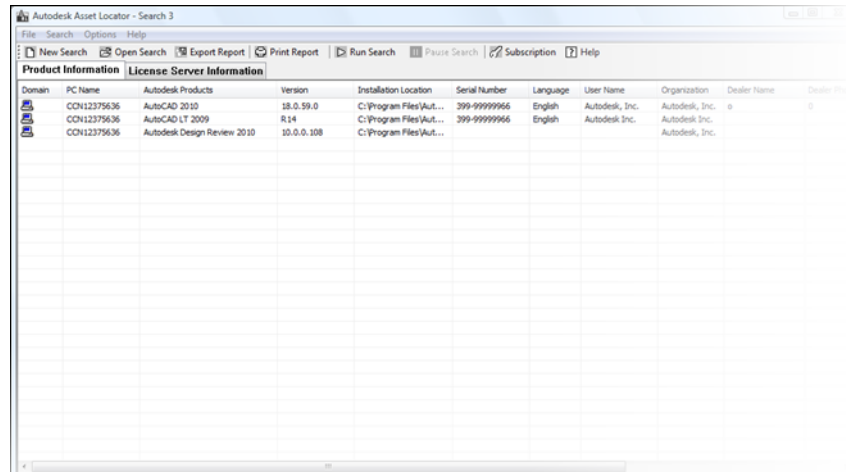
NOTE If you export search data to an Excel spreadsheet, results are saved in separate Autodesk Products and License Server Details tabs.

Autodesk Asset Locator Window

Menu: Start menu (Windows) ► All Programs ► Autodesk ► Tools and Utilities ► Autodesk Asset Locator

Provides menus for creating search definitions and searching for Autodesk stand-alone and network products. The results are displayed in table format in the same window, which is referred to in Help as the [Autodesk Asset Locator Report View](#) on page 19.

The Subscription button on the Autodesk Asset Locator toolbar provides access to the Autodesk Software Subscription Coverage Report.



The screenshot shows the Autodesk Asset Locator window with a toolbar and a table of search results. The toolbar includes buttons for New Search, Open Search, Export Report, Print Report, Run Search, Pause Search, and Subscription. The table has two tabs: Product Information and License Server Information. The Product Information tab is active, showing a table with columns: Domain, PC Name, Autodesk Products, Version, Installation Location, Serial Number, Language, User Name, Organization, Dealer Name, and Dealer Phone. The table contains three rows of data.

Domain	PC Name	Autodesk Products	Version	Installation Location	Serial Number	Language	User Name	Organization	Dealer Name	Dealer Phone
	CON12375636	AutoCAD 2010	18.0.59.0	C:\Program Files\Aut...	399-99999966	English		Autodesk, Inc.		
	CON12375636	AutoCAD LT 2009	R14	C:\Program Files\Aut...	399-99999966	English		Autodesk Inc.		
	CON12375636	Autodesk Design Review 2010	10.0.0.108	C:\Program Files\Aut...				Autodesk, Inc.		

File Menu

Controls the search definition and the report of results.

New Search Displays the [Product Search Definition Dialog Box](#) on page 15, where you create a new search definition.

Open Search Displays the [Open Search Definition Dialog Box](#) on page 16, where you can open a saved search definition that you want to run.

Modify Search Displays the [Modify Search Definition Dialog Box](#) on page 17, where you can open, copy, rename, or delete saved search definitions.

Export Report Displays the [Export Report Dialog Box](#) on page 20, where you can export the results of a search to a file in one of three file formats.

Print Report Prints the results displayed in the [Autodesk Asset Locator Report View](#) on page 19.

Exit Closes Autodesk Asset Locator.

Search Menu

Runs, pauses, and clears searches.

Run Search Runs the currently specified search. The results are displayed in the Autodesk Asset Locator window while the search is running. If you pause a search and then run it again without first clearing the search, the results are appended to the results that are already displayed.

Pause Search Stops a search before it is complete. You can resume the search or clear the results so far and start the search again.

Clear Search Clears any search data for the current search definition.

Options Menu

Specifies how many times to run the search and how to display the results.

Search and Viewer Options Displays the [Search and Viewer Options Dialog Box](#) on page 17, where you can control how the search is run and how the results are displayed. You can also control the display of toolbars and messages.

Help Menu


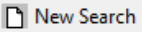
Provides access to Help and a complete list of products that Autodesk Asset Locator can search for.

Help Displays Help.

Products Searched Lists the products that Autodesk Asset Locator can search for.

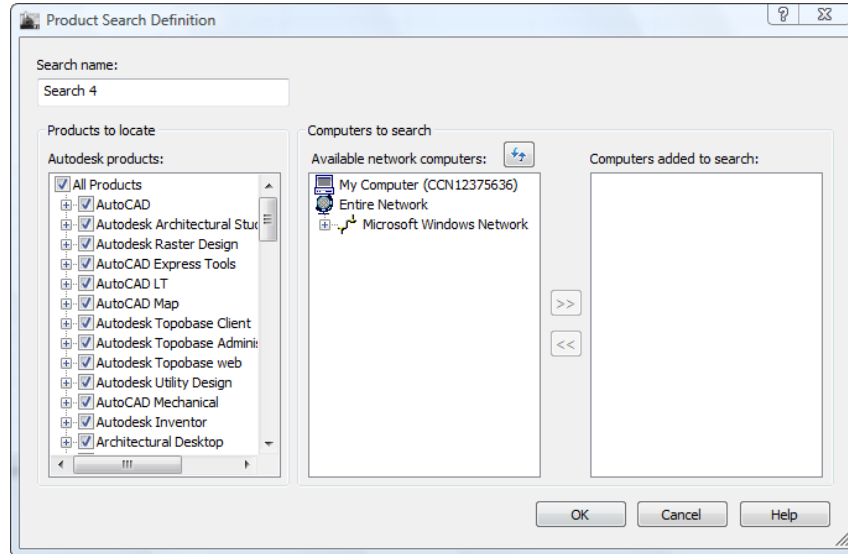
About Displays version and copyright information.

Product Search Definition Dialog Box

 **Toolbar:** Toolbar > 

 **Menu:** File > New Search

Defines, names, and saves a search definition.




Search Name Names the search definition. If you do not enter a name, the search is automatically named *Search 1*, *Search 2*, and so on.

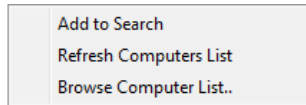
Autodesk Products Lists the group of products to find. To display a list of all products in a group, click the plus sign to the left of the group name.

Available Network Computers Lists the computers currently available on the network. An available computer is a computer that is currently logged on to the network or a computer that is started and at a login screen or locked.

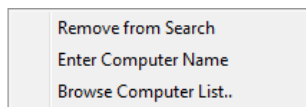
Computers Added to Search Lists the computers to search. To add a computer by name, right-click in the Computers Added to Search list and click Enter Computer Name on the shortcut menu. Enter the name of the computer in the new box in the list and press ENTER. You can enter a domain name as follows: *domainname*.

Refresh button  Refreshes the Available Network Computers list to include computers that have become available since the dialog box was opened.

Add to Search, Refresh Computers List, Browse Computer List (Shortcut menu) Adds a computer, refreshes an existing list to include computers that have become available since the dialog box was opened, or allows you to browse for a computer in the Available Network Computers list.



Remove from Search, Enter Computer Name, Browse Computer List (Shortcut Menu) Removes a computer, network, or domain that is selected in the Computers Added to Search list from the search, adds a computer name, or allows you to browse for a computer in the Computers Added to Search list.

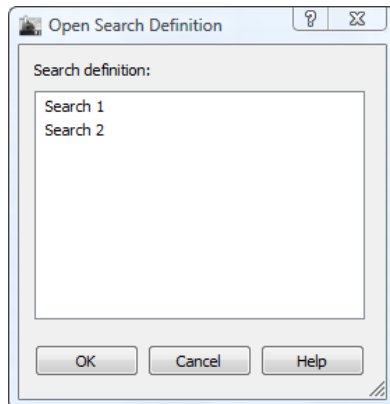


Open Search Definition Dialog Box

Toolbar: Toolbar >  Open Search

Menu: File > Open Search

Opens a saved search definition so that you can run the search.

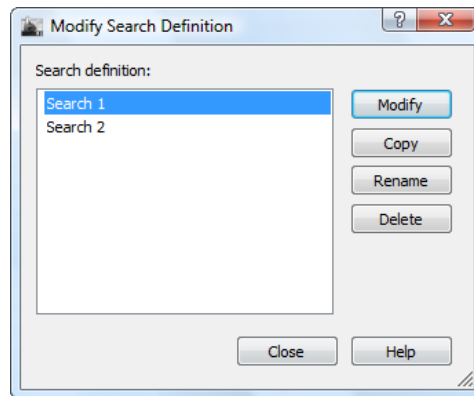


Search Definition Lists saved search definitions.

Modify Search Definition Dialog Box

 **Menu:** File ► Modify Search

Copies, renames, deletes, or modifies a saved search definition.



Modify Closes the Modify Search Definition dialog box and opens the Product Search Definition dialog box, where you can make changes to the selected search definition.

Copy Copies the selected search and adds it to the list with *Copy of* added to the search name. If you make more than one copy, a number is added to the name, for example, *Copy of Basic 1*.

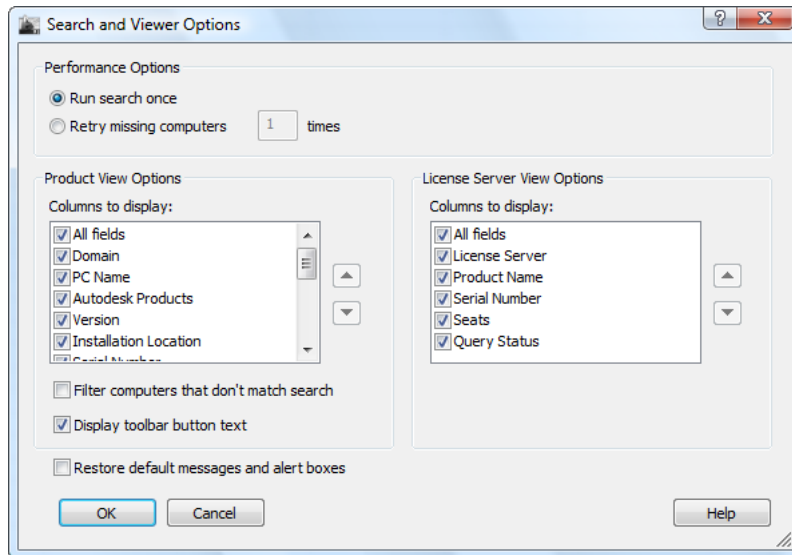
Rename Places a box around the selected search definition so that you can enter a new name.

Delete Deletes the selected search definition.

Search and Viewer Options Dialog Box

 **Menu:** Options ► Search and Viewer Options

Controls how the search is run and how the results are displayed; also controls the display of toolbars and messages.



Run Search Once Runs the search once through the list of computers in the search definition.

Retry Missing Computers x Times Searches for computers that were not available to be searched, and repeats this process the number of times you specify or until all computers in the search definition have been searched.

Product View Options/Columns to Display Controls the columns that are displayed in the AAL window's Product Information tab.

Move Up Moves the column name selected in the Columns to Display list up one position.

Move Down Moves the column name selected in the Columns to Display list down one position.


Filter Computers That Don't Match Criteria Displays in the search results only the computers that match the search criteria.

Display Toolbar Button Text Controls the display of toolbar buttons. When this option is selected, the name of the toolbar button is displayed beside the button icon. When the option is not selected, only the toolbar button icon is displayed.

Restore Default Messages and Alert Boxes Restores the display of messages that you turned off.

License Server View Options/Columns to Display Controls the columns that are displayed in the AAL window's License Server Information tab.

Autodesk Asset Locator Report View

 **Menu:** Start menu (Windows) ► All Programs ► Autodesk ► Tools and Utilities ► Autodesk Asset Locator

Product Information tab

Reports the results of a search in the form of a table. Information is displayed in the following columns:

Domain Displays the domain name.

PC Name The name of the computer that was searched. If the computer was not searched, the icon that precedes its name appears gray.

Autodesk Products The name of an Autodesk product found on the computer. If no products are found, the entry is None.

Version The version or release number of the product found. If no products are found, the entry is blank.

Installation Location The location of the Autodesk product found. If no products are found, the entry is blank.

Serial Number The serial number of the Autodesk product found. If no products are found, the entry is blank.

Language The language of the product found.

User Name The user name from the personalization information (if any) for the product found.

Organization The company name from the personalization information (if any) for the product found.

Dealer Name The name of the dealer from the personalization information (if any) for the product found.

Dealer Phone The telephone number of the dealer from the personalization information (if any) for the product found.

Service Pack Name The name of the service pack (if any) installed for the product found.

Installation Type The installation type for the product found. Installation types are stand-alone, network-server, network-client, and network-shared (thin client).

Query Status The status of the search for this computer. Status messages are OK, Computer Not Found, Access to the Computer Is Denied, and Unknown Error While Searching the Machine.

Query Date The date and time the computer was searched.

License Server Information tab

Reports the results of a network search in the form of a table. Information is displayed in the following columns:

License Server Displays the License Server name.

Product Name The name of an Autodesk product found on the computer. If no products are found, the entry is None.

Serial Number The serial number of the Autodesk product found. If no products are found, the entry is blank.

Seats Displays the number of users for a specific product.

Query Status Displays the current status of the search.

Export Report Dialog Box

 **Toolbar:** Toolbar > 

 **Menu:** File > Export Report

Exports the results of a search to a file in one of three file formats.

File Name Specifies the file name for the exported search results. If you do not enter a file name, the name of the search is used and the file extension *.xls* is added to export the results in Microsoft Excel 2000 format.

Save As Type Specifies the file format for the report file. The file formats are

- Microsoft Excel 2000 Workbook (*.xls)
- Microsoft Access 2000 Database (*.mdb)
- Comma Delimited Text (*.csv)

The default format is **.xls*.

Browse Folders/Folders Specifies the folder in which to save the file. You can create a new folder from this location.

Autodesk Asset Locator at the DOS Prompt

At the DOS prompt, in the *Autodesk Asset Locator* directory, you can enter **AAL** to run Autodesk Asset Locator. To run a search that has already been defined and export the results to a file, use the following syntax, all on one line.

```
AAL [ Search Definition ] [/mf] [/mb /R ReportFile] [/*] [/?]
```

If you do not enter a search definition, the whole network is searched for all products. You can use the following switches:

/mf Switch Displays the Autodesk Asset Locator window. You run the search in the dialog boxes provided. The */R* switch and the report file name, even if specified, are ignored.

/mb Switch Displays a dialog box that shows the progress of the search and provides a button you can use to cancel the search. When you use this switch, the */R* switch and the report file name are required.

/R Switch Creates a report of the search results. The file extension of the file name you enter determines the file format. The file extensions are *.xls* (Microsoft Excel 2000 Workbook), *.mdb* (Microsoft Access 2000 Database), and *.csv* (Comma-Delimited Text).

ReportFile The report file name with the path to write the search results.

/* Switch Lists the saved search definitions.

/? Switch Shows command line Help.

When you press ENTER, Autodesk Asset Locator runs the search in the DOS window until the search is complete or canceled. You cannot pause the search and resume it. To stop a search, press CTRL+C. The results of the partial search are saved.

Index

A

- AAL (Autodesk Asset Locator) 1, 13
- AAL command 21
- Autodesk Asset Locator
 - about 1, 13
 - defining searches 4
 - DOS prompt options 21
 - Export Report dialog box 20
 - exporting reports 9
 - installing 2
 - Modify Search Definition dialog box 17
 - Open Search Definition dialog box 16
 - printing reports 9
 - Product Search Definition dialog box 15
 - Report View 19
 - resuming searches 6
 - running searches 6
 - Search and Viewer Options dialog box 17
- Autodesk Asset Locator window 13
- Autodesk products
 - reporting on installations 1
- Autodesk Software Subscription Coverage Report 11
- available computers 4

C

- clearing
 - search results 7
- columns in reports 7, 10
- comma-delimited file format 10
- computers
 - available 4
 - data in reports 10
 - displaying matches for search criteria 7

- names 4
 - networked 4
- contract details 11
- CSV files 10
- customizing
 - reports 6, 9

D

- databases
 - exporting data for 10
- domains
 - searching for product installation information 4
- DOS prompt options 21

E

- editing
 - searches 4
- Export Report dialog box 20
- exporting
 - reports 9

F

- filtering
 - reports 9
 - searches 7

H

- hiding
 - columns in reports 10

I

- installation
 - Autodesk Asset Locator 1–2

L

License Server Information tab (Report View) 20

listing
computers 4

M

matching search criteria 7
Microsoft Windows 1
Modify Search Definition dialog box 17
moving
columns in reports 10

N

names of computers 4
networks
searching for product installation
information 4

O

Open Search Definition dialog box 16

P

pausing
searches 7
printing
reports 9–10
Product Information tab (Report View) 19
Product Search Definition dialog box 15

R

rearranging columns in reports 10
registry
searching computers for installation
information 4
release numbers 10
Report View 10, 19

reports

columns in 10
customizing 6, 9
exporting 9
filtering 9
hiding columns 10
printing 9–10
rearranging columns in 10
sorting data 10
subscription coverage 11
resuming searches 6–7
retrying searches 6
running
searches 6

S

Search and Viewer Options dialog
box 17
searching
clearing search results 7
computers for installation
information 4
defining searches 4
editing searches 4
pausing searches 7
resuming searches 6–7
running searches 6
specifying number of times to
retry 6
serial numbers 10
service packs 10
Software Subscription Coverage
Report 11
sorting
data in reports 10
spreadsheets 10
Subscription Coverage Report 11

V

version numbers 10

W

Windows 1

