

Autodesk®

Design Review 2009

Utilities and Telecom

Getting Started Guide



Autodesk®

Contents

- Getting Started with Autodesk Design Review** 1
 - Installation Instructions 1
 - Training and Support 1
- Using Autodesk Design Review** 1
 - Step 1: Open and Review 1
 - Step 2: Measure 2
 - Step 3: Mark Up 3
 - Step 4: Print 3
 - Step 5: Import 4
 - Step 6: Georeferencing 4
 - Step 7: GPS Navigation 5
- More Information** 5
 - Publishing 5
 - DWF(x) 5
 - Autodesk DWF Writer 5
 - Toolkit 5
 - Community 5

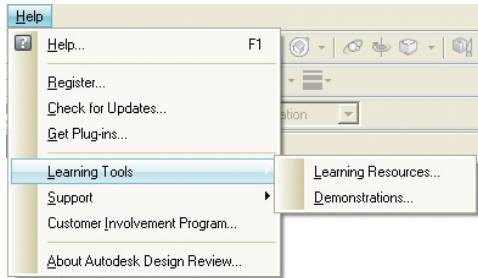
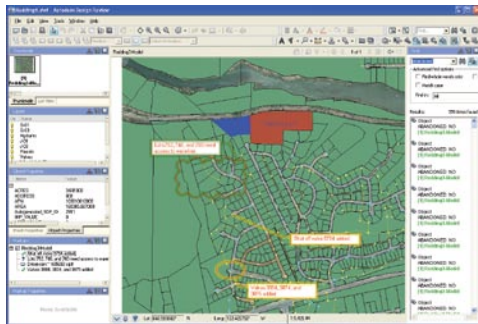


Figure 1



Robust navigation and search tools provide the ability to fully investigate models and quickly find detailed design data and object properties.

Figure 2

Getting Started with Autodesk Design Review

Use Autodesk® Design Review to accelerate your projects by giving extended team members and field workers access to the most up-to-date georeferenced mapping and field data overlaid with real-time GPS location information.

Autodesk Design Review enables your team members, field staff, construction contractors, customers, and planners to easily and securely view, print, measure, and annotate design information in the office or out in the field. Adopting Design Review allows non-CAD users easy access to designs and reinforces the high-quality data use that AutoCAD® Map 3D and AutoCAD® software deliver.

For CAD Managers: Autodesk Design Review powers effective design review and communication between creators of sophisticated map and field designs and non-CAD users.

For Designers and Drafters: Autodesk Design Review is free and integrated into all Autodesk design applications, including AutoCAD, AutoCAD Map 3D, and AutoCAD® Civil 3D® software. Together with built-in publishing from any Autodesk design application, Design Review enables you to effectively communicate your design and map data to field staff, construction contractors, and planners and import markups from reviewers back into the original design.

Installation Instructions

To install the software, visit www.autodesk.com/designreview, and select Download Now.

Training and Support

Within Autodesk Design Review, choose Help from the drop-down menu, and select Learning Tools (Figure 1) or Support to access a rich library of information about the product.

The tutorials can also be seen by visiting www.autodesk.com/designreview-tutorial.

Using Autodesk Design Review



The Autodesk Design Review Workflow: Send, Review, Mark Up, Import, Revise

The instructions below represent the typical design collaboration workflow between a designer using an Autodesk design application and a reviewer using Autodesk Design Review software. (Figure 2)

Step 1: Open and Review

You can review the contents of a map (2D) or model (3D) within a DWF™ file or DWFx file (note: this combination will be referred to as *DWF(x) file* within this document).

Open:

1. Double-click on the Autodesk Design Review application icon on your desktop, or navigate to Autodesk Design Review 2009 from your Start menu. 
2. Open the DWF(x) file you want to work with by using the file open icon or File>Open command. 
3. Navigate to the DWF(x) file you wish to open.
4. You may also double-click on any DWF(x) file in the Internet Explorer® window to launch Autodesk Design Review.

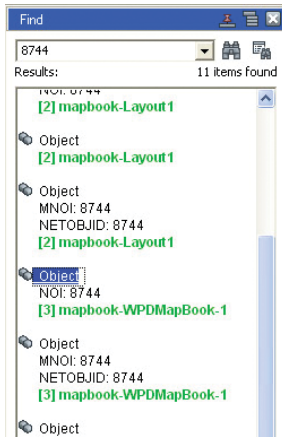
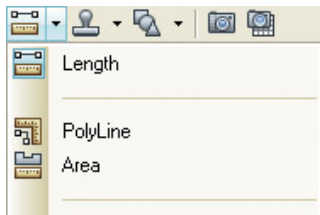


Figure 3



2D Measure Tools

Figure 4



2D Measure Example


Figure 5

Review:


Find and Locate

The Find tool makes it easy to quickly locate text in an open design file by searching for tabular data, markups, text on maps, objects, sheet names, and their properties. Found results are shown in a convenient list, enabling you to click a result to display the found text or associated object on the canvas or in a palette. (Figure 3)

To locate any text or object


1. Click the find icon in the toolbar to open the Find tool. 
2. Type a word or string into the Find text entry box, then click the Enter key. The Find dialog will open, displaying all results that match your entry. Results are displayed by sheet name, model, or parts list.
3. Select the hyperlink of the result you wish to see. This will highlight the object within the display window.
4. To edit your string, simply edit the search entry and click the Find button again.

Rotate Sheet

Select the Rotate Sheet button on the main menu to rotate any sheet (90 degrees clockwise or counterclockwise) to orient the sheet for better printing. 

Step 2: Measure

DWF(x) files are smart. They contain rich information about the drawings, maps, and models, including geometric data. You can measure distances on 2D sheets or 3D models. (Figures 4–5)

1. Click the Measure button in the main toolbar. Select the down arrow next to the measure button to show all measuring options (different tools are available for 2D sheets and 3D models). 
For this example, we will measure the length between two points.

2. Move the cursor over the canvas window, and hover over the starting location of your measurement (center point, line, point, arc). Click the starting point, once located.
3. Move the cursor over the second location, and select, once highlighted.
4. Select the location for your annotation.

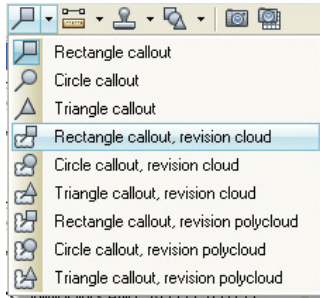


Figure 6

Step 3: Mark Up

The Autodesk Design Review Markup tools—including revision clouds, text, shapes, and stamps—enable reviewers to comment on models, maps, and drawings.

1. To create a revision cloud with comments, click on the Markup tool from the main toolbar. If the rectangular markup cloud is not displayed, click on the down arrow of the Markup tools and select it from the expanded list. (Figure 6)
2. Select one corner of the revision cloud.
3. Place the opposite corner for your revision cloud.
4. Select a location to place the text for the markup.
5. Type in your text.
6. Click outside the text box or press the Esc key to finish. Notice that a markup has been added within the markup panel.
7. Edit the status of the markup in the markup properties panel.
8. (Optional) Notes may be added to the markup status.



Step 4: Print

Layout information for all sheets will be saved in the DWF(x) file when published, enabling you to quickly print sheets within Autodesk Design Review. Additionally, the integrated Batch Print wizard makes printing multiple sheets from multiple files a simple task.

Single File Printing

1. To print any sheet, simply select the print icon, or select File>Print from the toolbar.
2. The Print dialog will open, giving options for printing your sheet(s).
3. Select OK to send your sheets to the printer.

Batch File Printing

1. Select File>Batch Print Wizard. (Figure 7)
2. The Batch Print Wizard will walk you through printing of multiple sheets from several DWF(x) files.

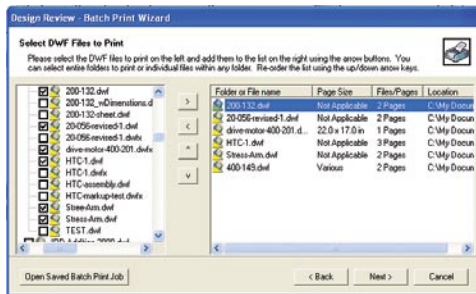


Figure 7

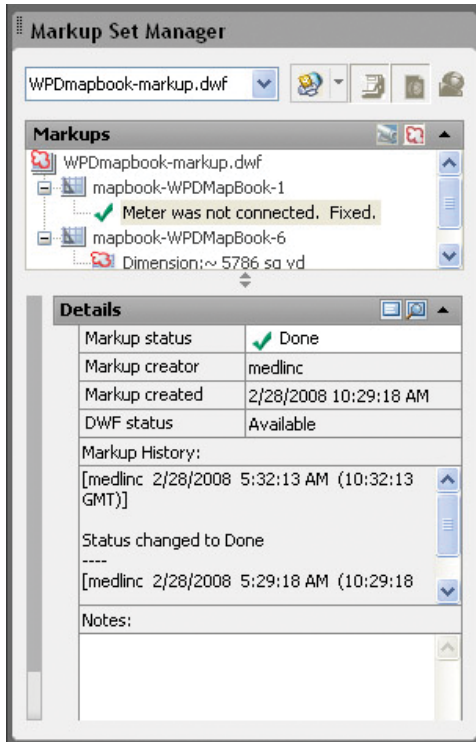
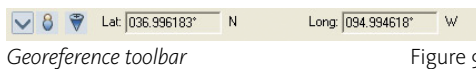


Figure 8



Georeference toolbar

Figure 9

Step 5: Import Drawing Sheets into Design Package

Once you have created markups, you can save the DWF(x) file and send it back to the designer or on to other reviewers until all comments and changes are noted and communicated throughout the review process.

If the individuals to whom you send the marked-up DWF(x) file have Autodesk design software, they can open the file directly using the Markup Set Manager feature in their design application. They can add notes and change the status of the sheet just as you can.

The Markup Set Manager feature has the same markup status view as that in Autodesk Design Review, enabling the designer to systematically walk through and make revisions easily. The designer can also toggle the markup layer on or off to see what changes are requested and make the changes in the design. (Figure 8)

For AutoCAD Map 3D users

1. Type **markup** from the command line. The Markup Set Manager dialog will open.
2. Select Open from the Markup Set Manager dialog.
3. Select your DWF(x) file with markups to load.
4. AutoCAD will display all sheets (within the DWF file) that contain markups in the Markup Set Manager.
5. Select the + to the left of the sheet name to display all markups within each sheet.
6. Double-click on any markup to display the markup overlay in the canvas window, as it was displayed within Design Review.
7. Within AutoCAD you have the ability to edit the status and make notes to the markup.
8. Republish the sheets with revised status when complete.

Step 6: Georeferencing

Autodesk Design Review will display longitude and latitude coordinates published from AutoCAD® Map 3D 2009 or AutoCAD® Civil 3D® 2009. Field workers with laptops can now view and interact with assets on maps and identify the locations of specific assets. Coordinates may also be selected, entered, copied, and pasted. (Figure 9)

To view georeferencing information on a map:

1. If a map was published with georeferenced information, this information will automatically be displayed below the map.
2. Move the cursor around the map to display Lat/Long values.

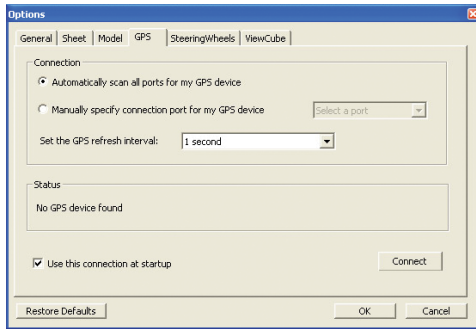


Figure 10

Step 7: GPS Navigation

Maps with defined latitude and longitude coordinates published from AutoCAD Map 3D 2009 or AutoCAD Civil 3D 2009 can interact with GPS devices with Autodesk Design Review. The Map toolbar displays the latitude and longitude. Field workers with GPS-enabled laptops can now view and interact with assets on maps and identify their own current location. (Figure 10)

To set up a GPS device

1. Set up your GPS device to your laptop to specified COM port.
2. In Design Review, select Tools>Options, then select the GPS tab.
3. Specify options for automatically scanning ports for your GPS device, or manually enter GPS comm information.
4. Select Connect, then OK.
5. Turn on the GPS mode from the Map toolbar. The GPS icon will display current location within map extents.



More Information

To find more information on Autodesk Design Review, review the links below:

Publishing

For specific instructions on publishing DWF(x) files from Autodesk products, visit www.autodesk.com/dwf-publishing.

DWF(x)

For details on the differences between DWF and DWFx, and more information on both, visit www.autodesk.com/dwfx.

Autodesk DWF Writer

For specific instructions about Autodesk® DWF™ Writer software, and how to download, visit www.autodesk.com/dwfwriter.

Toolkit

Interested in developing an API (application programming interface) around Autodesk Design Review? To find out more, visit www.autodesk.com/dwftoolkit.

Community

For more information, including sample files, tips and tricks, and real-world user stories, visit the DWF Community at www.autodesk.com/dwf.



*This product is subject to the terms and conditions of the end-user license agreement that accompanies download of this software.

Autodesk, Inc., 111 McInnis Parkway, San Rafael, California 94903 USA

Autodesk, AutoCAD, Civil 3D, DWF, and DWF (logo) are registered trademarks or trademarks of Autodesk, Inc., in the USA and/or other countries. All other brand names, product names, or trademarks belong to their respective holders. Autodesk reserves the right to alter product offerings and specifications at any time without notice, and is not responsible for typographical or graphical errors that may appear in this document.
© 2008 Autodesk, Inc. All rights reserved.



*This product is subject to the terms and conditions of the end-user license agreement that accompanies download of this software.

Autodesk, Inc., 111 McInnis Parkway, San Rafael, California 94903 USA

Autodesk, AutoCAD, Civil 3D, DWF, DWF (logo), Revit, SteeringWheels, and ViewCube are registered trademarks or trademarks of Autodesk, Inc., in the USA and/or other countries. All other brand names, product names, or trademarks belong to their respective holders. Autodesk reserves the right to alter product offerings and specifications at any time without notice, and is not responsible for typographical or graphical errors that may appear in this document. © 2008 Autodesk, Inc. All rights reserved.