

Frequently Asked Questions

Q. Are there different trials available for each product?

A. Yes, there is a separate trial available for each of the products in the Autodesk® Alias® product family. Once you start the download process, you will be prompted to choose which product trial you want to download.

- **Autodesk Alias Design**
Autodesk® Alias® Design is for consumer product designers who control the entire design process—from ideation to the final surfaces that are passed to engineering. It enables designers to rapidly develop and communicate product design concepts using sketches, illustrations, photorealistic renderings, and animations.
- **Autodesk Alias Surface**
Autodesk® Alias® Surface offers a full set of dynamic 3D modeling capabilities that enable virtual modelers to evolve concept models and scan data into high-quality production surfaces for consumer product design and Class-A surfaces for automotive design and styling.
- **Autodesk Alias Automotive**
Autodesk® Alias® Automotive includes all of the functionality in Alias Design and Alias Surface. It is an industry-leading application for automotive design and styling and provides a comprehensive set of visualization and analysis tools for the entire shape definition process, from concept sketches through Class-A surfacing.

Q. What operating systems do the Alias trials run on?

A. The Autodesk Alias product trials are available for Mac OS® X and Windows Vista®; Windows XP Professional and Windows XP Professional x64 Edition operating systems.

Q. What is the current version of Alias product trials?

A. The trials are based on Autodesk Alias Design 2010, Autodesk Alias Surface 2010, or Autodesk Alias Automotive 2010.

Q. How do I get a license for trial version?

A. You will need to download, install, and launch the software first. Once you have launched the software, the Product Configuration Wizard (PCW) will guide you through the licensing process.

(Con't on next page)

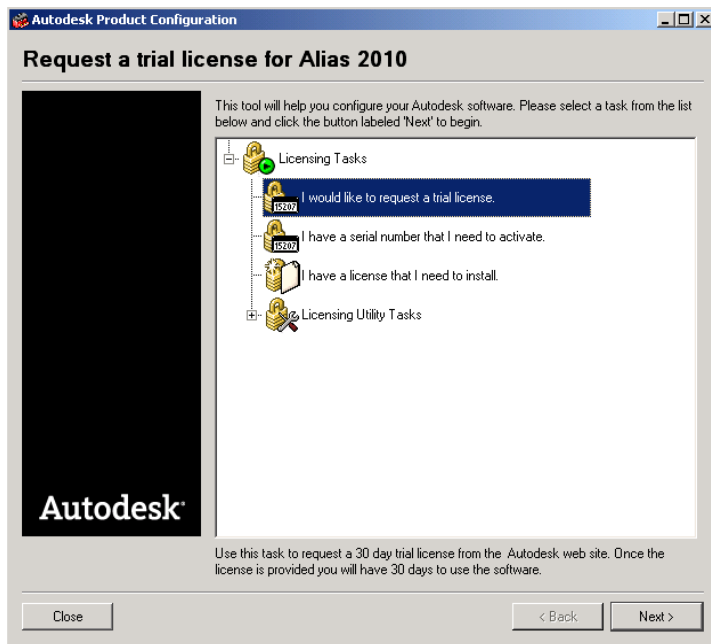
AUTODESK ALIAS PRODUCT TRIAL - FREQUENTLY ASKED QUESTIONS

To get started, Click **Install Alias** after you have downloaded the self extracting file.



The Product Configuration Wizard (PCW) will take you to the Licensing Tasks website.

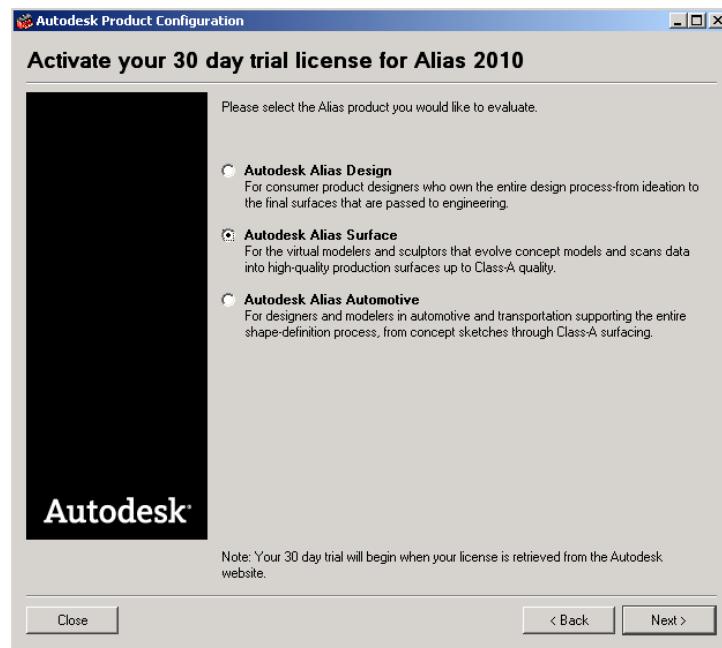
If not already maximized, click on the **Licensing Tasks link**. From the list of options, choose **“I would like to request a trial license”**.



(Con't on next page)

AUTODESK ALIAS PRODUCT TRIAL - FREQUENTLY ASKED QUESTIONS

As a trial is available for all of the Alias products, you will be prompted to choose the trial you wish to download.



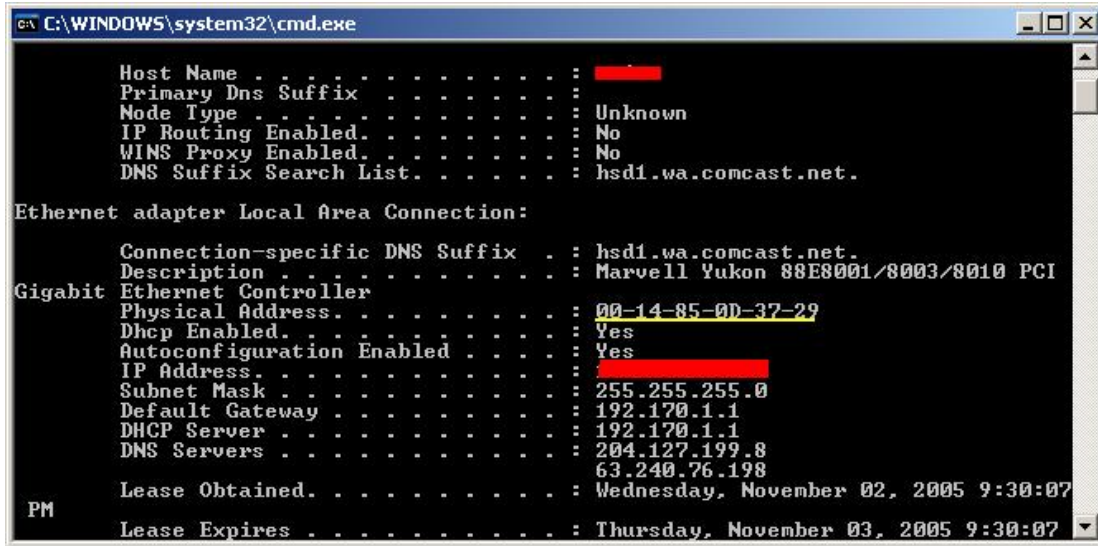
Once you have designated which product you want to trial and have completed the Alias Product Trial Registration & Activation download form, an email containing licensing information will be sent to the email address provided.

Once the license is generated, you can activate it by one of the methods offered by PCW. If you choose "I would like to type or copy-paste my license" you must copy-paste the license from the website to the PCW window. If you choose "I would like to install the license from a file", you must save the license as a file from the web site and point PCW to the saved file on your computer.

The PCW will install the license and will confirm if the installation was successful. Once the trial has been successfully activated, you will be able to launch the product application you've chosen in trial mode.

Q. When installing the trial, I am asked for my MAC address. How do I find this?

A. Follow the instructions below



1. Click on the Start Menu.
2. Click on 'Run...'
3. Type 'cmd' without quotes and press Enter.
4. At the command prompt, type 'ipconfig /all' without quotes. (space between g and /)
5. Alternatively, if using Windows XP, you can use the command 'getmac'.
6. Your MAC Address is listed under 'Physical Address' as a series of 6 groups of two digits, letters and numbers, separated by dashes, such as in the image below. Make sure you get the physical address of the correct network adapter - usually there are several listed.

Q. When does the trial license begin?

A. The 30 day license begins when the license is generated and sent via email. The trial will be available for 30 consecutive calendar days.

Q. What is included with the Alias Trial download?

A. In addition to the software, the trial includes online documentation, learning movies, and a set of tutorials to teach you the basics of using the Autodesk Alias products. Additional learning tools are available for purchase at the Autodesk [online store](#) and a number of free tutorials are available at the [Autodesk AliasDesign Community](#) website.

AUTODESK ALIAS PRODUCT TRIAL - FREQUENTLY ASKED QUESTIONS

Q. How do I install the tutorial/courseware content?

A. When you install the Alias trial, the courseware files (Alias wire files and other support files) are not automatically installed. You must install them manually using the instructions below.

1. Download the courseware files from the AliasDesign Community Website
2. Copy the downloaded CourseWare folder into your user_data folder.
On Windows systems, this is typically: C:\Documents and Settings\[userid]\My Documents\Autodesk\Alias\user_data\CourseWare. On Mac OS X, this is typically: /Documents/Autodesk/Alias/user_data/CourseWare

Q. Is support available for the product trials?

A. Other than the mentioned Tutorials and example files there is no Hotline support available. Other free online resources are available at the [Autodesk AliasDesign Community](#).

Q. How do I purchase Autodesk Alias software?

A. Autodesk Alias software can be purchased through an Authorized Autodesk Reseller or through the Autodesk online store. [Find out more about purchasing options here.](#)

Autodesk

Autodesk and Alias are registered trademarks of Autodesk, Inc., in the USA and/or other countries. All other brand names, product names, or trademarks belong to their respective holders. Autodesk reserves the right to alter product offerings and specifications at any time without notice, and is not responsible for typographical or graphical errors that may appear in this document.

© 2009 Autodesk, Inc. All rights reserved.