

Autodesk FBX Converter

# User Guide

**Autodesk®**

## Copyright

© 2009 Autodesk, Inc. All rights reserved. Except as otherwise permitted by Autodesk, Inc., this publication, or parts thereof, may not be reproduced in any form, by any method, for any purpose.

Certain materials included in this publication are reprinted with the permission of the copyright holder.

The following are registered trademarks or trademarks of Autodesk, Inc., in the USA and other countries: 3DEC (design/logo), 3December, 3December.com, 3ds Max, ADI, Alias, Alias (swirl design/logo), AliasStudio, AliasWavefront (design/logo), ATC, AUGI, AutoCAD, AutoCAD Learning Assistance, AutoCAD LT, AutoCAD Simulator, AutoCAD SQL Extension, AutoCAD SQL Interface, Autodesk, Autodesk Envision, Autodesk Insight, Autodesk Intent, Autodesk Inventor, Autodesk Map, Autodesk MapGuide, Autodesk Streamline, AutoLISP, AutoSnap, AutoSketch, AutoTrack, Backdraft, Built with ObjectARX (logo), Burn, Buzzsaw, CAiCE, Can You Imagine, Character Studio, Cinestream, Civil 3D, Cleaner, Cleaner Central, ClearScale, Colour Warper, Combustion, Communication Specification, Constructware, Content Explorer, Create>what's>Next> (design/logo), Dancing Baby (image), DesignCenter, Design Doctor, Designer's Toolkit, DesignKids, DesignProf, DesignServer, DesignStudio, DesignStudio (design/logo), Design Web Format, Discreet, DWF, DWG, DWG (logo), DWG Extreme, DWG TrueConvert, DWG TrueView, DXF, Ecotect, Exposure, Extending the Design Team, Face Robot, FBX, Filmbox, Fire, Flame, Flint, FMDesktop, Freewheel, Frost, GDX Driver, Gmax, Green Building Studio, Heads-up Design, Heidi, HumanIK, IDEA Server, i-drop, ImageModeler, iMOUT, Incinerator, Inferno, Inventor, Inventor LT, Kaydara, Kaydara (design/logo), Kynapse, Kynogon, LandXplorer, LocationLogic, Lustre, Matchmover, Maya, Mechanical Desktop, Moonbox, MotionBuilder, Movimento, Mudbox, NavisWorks, ObjectARX, ObjectDBX, Open Reality, Opticore, Opticore Opus, PolarSnap, PortfolioWall, Powered with Autodesk Technology, Productstream, ProjectPoint, ProMaterials, RasterDWG, Reactor, RealDWG, Real-time Roto, REALVIZ, Recognize, Render Queue, Retimer, Reveal, Revit, Showcase, ShowMotion, SketchBook, Smoke, Softimage, Softimage|XSI (design/logo), SteeringWheels, Stitcher, Stone, StudioTools, Topobase, Toxik, TrustedDWG, ViewCube, Visual, Visual Construction, Visual Drainage, Visual Landscape, Visual Survey, Visual Toolbox, Visual LISP, Voice Reality, Volo, Vtour, Wire, Wiretap, WiretapCentral, XSI, and XSI (design/logo).

The following are registered trademarks or trademarks of Autodesk Canada Co. in the USA and/or Canada and other countries: Backburner, Multi-Master Editing, River, and Sparks.

The following are registered trademarks or trademarks of Moldflow Corp. in the USA and/or other countries: Moldflow MPA, MPA (design/logo), Moldflow Plastics Advisers, MPI, MPI (design/logo), Moldflow Plastics Insight, MPX, MPX (design/logo), Moldflow Plastics Xpert.

All other brand names, product names or trademarks belong to their respective holders.

### Disclaimer

THIS PUBLICATION AND THE INFORMATION CONTAINED HEREIN IS MADE AVAILABLE BY AUTODESK, INC. "AS IS." AUTODESK, INC. DISCLAIMS ALL WARRANTIES, EITHER EXPRESS OR IMPLIED, INCLUDING BUT NOT LIMITED TO ANY IMPLIED WARRANTIES OF MERCHANTABILITY OR FITNESS FOR A PARTICULAR PURPOSE REGARDING THESE MATERIALS.

# Contents

<b>Chapter 1</b>	<b>Installation</b> . . . . .	<b>1</b>
	Introduction . . . . .	1
	Windows installation . . . . .	1
	Macintosh installation . . . . .	2
	Linux installation . . . . .	3
<b>Chapter 2</b>	<b>Converting Files</b> . . . . .	<b>5</b>
	Converting files . . . . .	5
	Creating a conversion preset . . . . .	8
<b>Chapter 3</b>	<b>Conversion options</b> . . . . .	<b>11</b>
	Introduction . . . . .	11
	FBX to FBX conversion options . . . . .	11
	3DS conversion options . . . . .	11
	DXF conversion options . . . . .	14
	OBJ conversion options . . . . .	15
	COLLADA conversion notes . . . . .	16
	What's not supported by COLLADA . . . . .	16
	<b>Index</b> . . . . .	<b>19</b>



# Installation

# 1

## Introduction

The FBX Converter lets you convert files into different file formats and FBX versions. With the FBX Converter, you can convert files to and from FBX, 3DS, DXF, OBJ, & COLLADA file formats. This chapter describes how to install the FBX Converter on Microsoft® Windows® , Apple® Macintosh® OS X and Linux systems.

## Windows installation

The FBX Converter is compatible with the following versions of Microsoft Windows:

- Windows XP (32/64-bit)
- Windows Vista (32/64-bit)

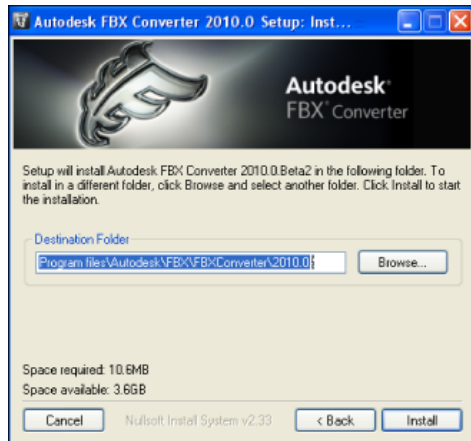
To install the FBX Converter:

- 1 Download the install file from the Autodesk web site (<http://www.Autodesk.com/fbx>).
- 2 Double-click the install file to launch the FBX Converter installer.



Software License Agreement window

- 3 Click I accept to accept the terms of the license agreement, and then click Next.
- 4 The next window shows the recommended installation location for the FBX Converter. If you want to specify another location, click Browse to launch the file browser. Click Next.



**Installation Folder window**

- 5 The next window shows the recommended installation location for the FBX Converter documentation. If you want to specify another location, click Browse to launch the file browser. Click Next.
- 6 A dialog box appears asking if you would like to view the FBX Converter documentation. Select Yes or No.
- 7 The installation completed window appears. Click Close to exit the installer.

---

**NOTE** To start the application, click Start > All Programs > Autodesk > Autodesk FBX Converter > FbxConverterUI. You can also access all FBX Converter files in the Program Files > Autodesk > FBX > FBXConverter > 2010.0 folder.

---

## Macintosh installation

The FBX Converter is compatible with the following Macintosh OS:

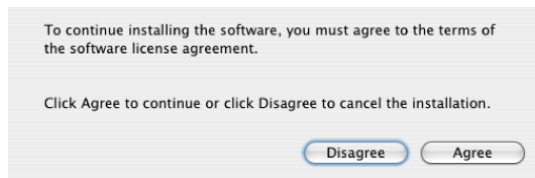
- Mac OS X 10.4
- Mac OS X 10.5

- 1 Download the .sit file from the Autodesk web site to your desktop (<http://www.Autodesk.com/fbx>).
- 2 Double-click the .sit file to extract the Installation disk image.
- 3 Double-click the package icon to start the installation. The Welcome pane appears.



**Welcome pane**

- 4 Click Continue to start the installation process. The Software License Agreement pane appears.
- 5 Read the License Agreement and click Continue. A dialog box appears asking if you accept the terms and continue with the installation.



**License agreement**

- 6 Click Agree to accept. The Select a Destination pane appears. Select the destination disk where you want to install the FBX Converter and click Continue.
- 7 The Easy Install pane appears. Click Upgrade.
- 8 A dialog box appears asking you to enter your name and login password to continue the installation.

---

**NOTE** You must obtain administrator privileges to continue installation.

---

- 9 The installation begins. A progress bar indicates the time remaining of the installation. When the progress reaches 100%, the Finish Up pane appears.
- 10 Click Close to exit the installation program.

---

**NOTE** The FBX Converter installs to the following directory: <Macintosh Drive>/Applications/Autodesk/FbxConverter.

---

## Linux installation

**To install the FBX Converter:**

- 1 On a machine running Linux, download the install file from the Autodesk web site (<http://www.Autodesk.com/fbx>).

- 2 Find the distribution file of FBX Converter 2009.3 for Linux and download it to your computer. The distribution file is an executable. Make sure you have execution permission on that file:

```
% 'chmod u+x FBX20093_CONVERTER_LINUX_ENU'
```

- 3 Execute the installer and treat the installation target directory as an argument:

```
% './FBX20093_CONVERTER_LINUX_ENU /usr/MyPrograms'
```

- 4 Follow the on-screen instructions.



# Converting Files

# 2

The FBX Converter lets you convert 3DS, DXF, OBJ, or DAE (COLLADA) files to the FBX file format. You can also use it to convert FBX files to 3DS, DXF, OBJ or DAE (COLLADA) format, as well as convert FBX files to previous FBX versions.

## Supported FBX conversion formats

The FBX Converter 2009 converts files to the following FBX formats:

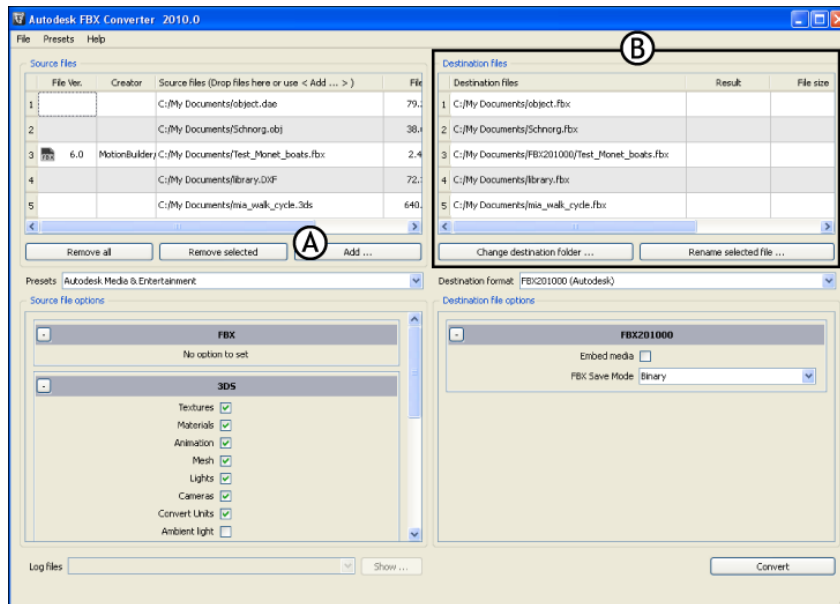
- FBX201000
- FBX200900
- FBX200611
- FBX200608
- FBX200602\_MB75
- FBX200508\_MB70
- FBX60\_MB60

## Converting files

You can convert an FBX file to FBX, 3DS, DXF, OBJ, or DAE (COLLADA) but you can only convert 3DS, DXF, OBJ, or DAE (COLLADA) to FBX format.

### To convert files:

- 1 Drag a file into the Source Files area, or click the Add button to open a browser to locate files.  
The files appear in the Destination files area to show you where converted file(s) will be saved. You can change the destination later.



Source Files list A. Add button B. Destination files area

---

**NOTE** To remove files from the Source Files list, select the files and click Remove Selected, or click Remove All to clear the list.

---

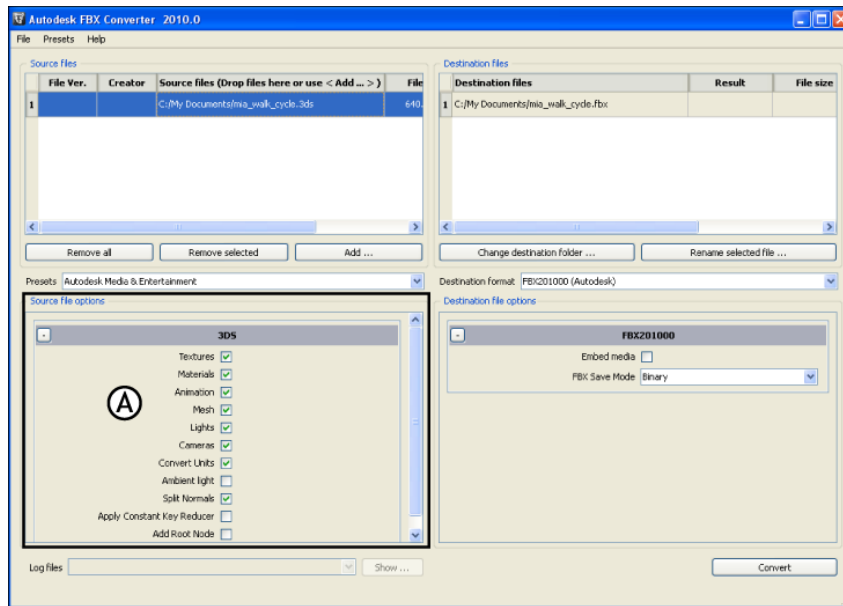
- 2 Select a preset from the Presets drop-down menu, if applicable. See [Creating a conversion preset](#) on page 8.
- 3 If you want to save your converted file to another location, click Change Destination Folder to open a file browser where you can specify a location.

---

**NOTE** When you perform an FBX to FBX conversion, the files are stored in a folder named for the FBX version you specified.

---

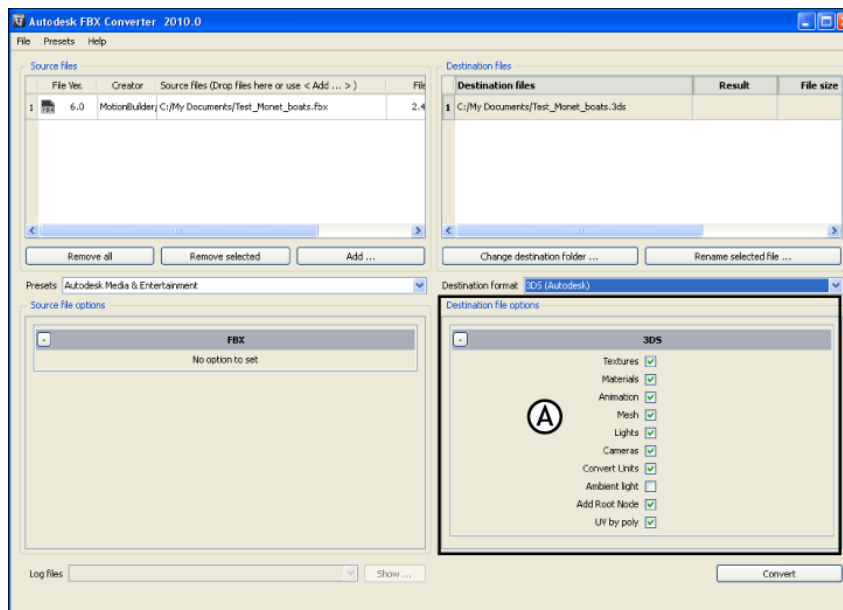
- 4 If you want to save your converted file with a different name from the original, click Rename Selected File.
- 5 Select a conversion format from the Destination Format menu.
- 6 Activate or disable any conversion options from the Source File Options menu (if applicable). See [Conversion options](#) on page 11 for a list of available options.



**FBX Converter A. Source file options**

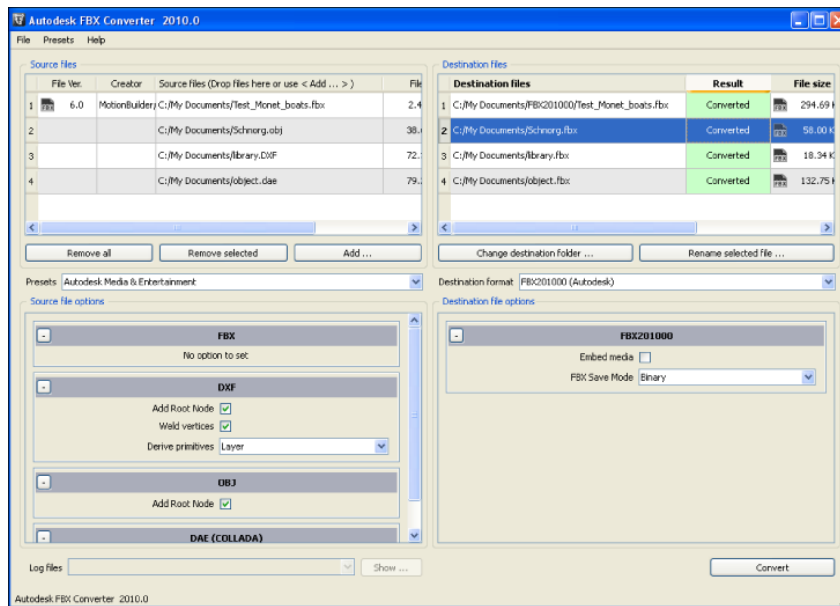
**NOTE** When you convert more than 1 file, your conversion options are limited based on the format of the files you are converting. To expand your options, convert files in batches by format, such as all 3DS or all FBX.

- 7 Activate or disable any conversion options from the Destination file options (if applicable). See [Conversion options](#) on page 11 for a list of available options.



**FBX Converter A. Destination file options**

- 8 Click Convert.



**Completed conversion**

If any conversion errors occurred, an error log is created. View this file in the FBX Converter's Log file menu.

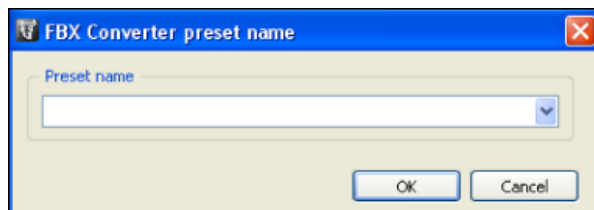
If the files already exist in the destination folder, a dialog box appears asking you to Overwrite, Skip, or Rename the file. You can also abort the conversion process which would cancel the remainder of the conversions.

## Creating a conversion preset

You can create a preset that you can apply when you wish to use the same conversion options repeatedly.

**To create a conversion preset:**

- 1 From the main FBX Converter menu, select Presets.
- 2 Select Edit.
- 3 A list of all applicable options for import and export appears. Select any desired options to use these as your preset settings.
- 4 Select Preset > Save. An FBX Converter Preset Name window appears for you to enter the name of your preset.



**FBX Converter Preset name window**

To edit a preset, select Edit from the Presets menu, make your changes and click Save.

## Preset locations

The FBX Converter presets are saved in the following locations:

Preset	Location
Windows default	C:\Program Files\Autodesk\FBX\FBXConverter\2010.0\presets
Windows Custom (User)	C:\My Documents\FBX Converter\presets\2010.0
Macintosh default	/Applications/Autodesk/FbxConverter/FBX-ConverterUI.app/Contents/MacOS/presets
Macintosh Custom (User)	Users/admin/FBX Converter/presets/2010.0
Linux default	/root/(Install Directory)/FBXConverter/presets/2010.0
Linux Custom (User)	/root/FBX Converter/presets/2010.0



# Conversion options

# 3

## Introduction

The following section describes each conversion option and their related settings. This section also contains a special section on naming conventions for FBX files that are converted into other FBX versions. We recommend leaving the default conversion options as they are, except in special cases. For example, if your scene is large and you do not need textures or materials imported, you would alter the default conversion settings.

---

**NOTE** These descriptions apply to both the Macintosh and Windows versions of the FBX Converter.

---

## FBX to FBX conversion options

The following option is available if you are converting FBX files to another FBX format:

Option	Behavior
Embed Media	Activate this option to include (or embed,) all media associated with your scene in the FBX file. You cannot embed media if you save the file in ASCII format.
FBX Save Mode	Select Binary to save the FBX file in the standard format. Select ASCII to save the FBX file in ASCII format.

## 3DS conversion options

The following are the options for converting files to and from the 3DS file format.

---

**NOTE** You can only export to FBX format when converting from 3DS format.

---

### 3DS to FBX Source File options

The following options are available if you are converting 3ds Max 3DS files to the FBX format:

Option	Behavior
Textures	Activate this option to include texture mapping with the file conversion.
Materials	Activate this option to include materials with the file conversion. If you disable this option, the texture option is ignored.
Animation	Activate this option to include animation with the file conversion.
Mesh	Activate this option to include geometry with the file conversion. If you disable this option, mesh geometry is converted into Null or dummy objects, but the animation and hierarchy are preserved.
Lights	Activate this option to include lights with the file conversion.
Cameras	Activate this option to include cameras with the file conversion.
Convert Units	Activate this option to convert file units to centimeters. If you disable this option, the source application scale might not match once it is converted to or from the FBX file format.
Ambient Light	Activate this option to retain Ambient light settings with the file conversion.
Split Normals	Activate this option to split geometry Normals based on their edge continuity. This option splits per-vertex Normals and should be used only in specific workflows where you want to ensure visual fidelity of surface continuity in applications that do not support Smoothing Group conversion.
Apply Constant Key Reducer	Activate this option to apply the Constant Key Reducer filter to animation curves. This reduces the number of redundant key-frames.
Add Root Node	Activate this option to add a root node to all elements of your scene in the file conversion. Doing this adds a null or dummy object at the top of the hierarchy.



### 3DS to FBX Destination file options

The following options are available if you are converting 3ds Max 3DS files to the FBX format:

Option	Behavior
FBX Save Mode	Select Binary to save the FBX file in the standard format. Select ASCII to save the FBX file in ASCII format.

### FBX to 3DS

The following options are available in the Destination file options if you are converting FBX files to the 3ds Max 3DS format:

Option	Purpose
Texture	Activate this option to include texture mapping with the file conversion.
Material	Activate this option to include materials with the file conversion. If you disable this option, the texture option is ignored.
Animation	Activate this option to include animation with the file conversion.
Mesh	Activate this option to include geometry with the file conversion. If you disable this option, mesh geometry is converted into Null or dummy objects, but the animation and hierarchy are preserved.
Lights	Activate this option to include lights with the file conversion.
Cameras	Activate this option to include cameras with the file conversion.
Convert Units	Activate this option to convert file units to centimeters. If you disable this option, the source application scale might not match once it is converted to or from the FBX file format.
Ambient light	Activate this option to retain Ambient light settings with the file conversion.
Split Normals	Activate this option to split geometry Normals based on their edge continuity. This option splits per-vertex Normals and should be used only in specific workflows where you want to ensure visual fidelity of surface continuity in applications that do not support Smoothing Group conversion.
Add Root Node	Activate this option to add a root node to all elements of your scene in the file con-

Option	Purpose
	version. Doing this adds a null or dummy object at the top of the hierarchy.
UV by Poly	Activate this option to retain the exact UV texture coordinates of the model if your UV textured models are defined by polygon vertices. If you activate this option, Smoothing groups are lost. If you disable this option when UV texture of a model is defined by polygon vertices, the Smoothing groups are retained.

## DXF conversion options

The following are the options for converting files to and from the AutoCAD DXF file format.

---

**NOTE** You can only export to FBX format when converting from DXF format.

---

### DXF to FBX Source Files options

The following options are available if you are converting AutoCAD DXF files to the FBX format:

Option	Behavior
Add Root	Activate this option to add a root node to all elements of your scene in the file conversion. Doing this adds a null or dummy object at the top of the hierarchy.
Weld Vertices	Activate this option to compare and merge vertices if they are found to be of equal value.
Derive Primitives	Activate Layer to derive one object from each layer. Activate Block to group all entities into one single object. Only block imports are considered separate objects. Activate Entity to derive one object from each entity in the file.
Embed Media	Activate this option to include (or embed,) all media associated with your scene in the FBX file. You cannot embed media if the file is saved in ASCII format.

### DXF to FBX Destination Files options

The following options are available if you are converting AutoCAD DXF files to the FBX format:

Option	Behavior
Embed Media	Activate this option to include (or embed,) all media associated with your scene in the

Option	Behavior
	FBX file. You cannot embed media if the file is saved in ASCII format.
FBX Save Mode	Select Binary to save the FBX file in the standard format. Select ASCII to save the FBX file in ASCII format.

### FBX to DXF Destination Files options

The following options are available if you are converting FBX files to AutoCAD DXF format:

Option	Behavior
Triangulate	Activate this option to force the conversion of quads to triangles. The FBX converter always triangulates NURBS and Patch geometries, regardless of how you set this option. The FBX Converter approximates NURBS and Patch geometry using a polygon mesh made of triangles since the DXF format does not support NURBS or Patch geometry.
Bake Deformations	Activate this option to “bake” (or Plot) link and shape deformations on the resulting geometry.

## OBJ conversion options

The following are the options for converting files to and from the OBJ file format.

**NOTE** You can only export to FBX format when converting from 3DS format.

### OBJ to FBX Source files options

The following options are available if you are converting OBJ files to the FBX format:

Option	Behavior
Add Root Node	Activate this option to add a root node to all elements of your scene in the file conversion. Doing this adds a null or dummy object at the top of the hierarchy.

### OBJ to FBX Destination files options

The following options are available if you are converting OBJ files to the FBX format:

Option	Behavior
Embed Media	Activate this option to include (or embed,) all media associated with your scene in the FBX file. You cannot embed media if you save the file in ASCII format.

Option	Behavior
FBX Save Mode	Select Binary to save the FBX file in the standard format. Select ASCII to save the FBX file in ASCII format.

### FBX to OBJ

The following options are available if you are converting FBX files to the OBJ format:

Option	Behavior
Triangulate	Activate this option to force the conversion of quads to triangles. The FBX converter always triangulates NURBS and Patch geometries, regardless of how you set this option. The FBX Converter approximates NURBS and Patch geometry using a polygon mesh made of triangles since the DXF format does not support NURBS or Patch geometry.
Bake Deformations	Activate this option to “bake” (or Plot) link and shape deformations on the resulting geometry.

## COLLADA conversion notes

COLLADA (DAE) files converted to the FBX format are limited to what the FBX format supports. The conversion process loses anything that is not supported by the current FBX version, even if it was previously supported by the DAE format before conversion.

COLLADA conversion can export meshes, bones, skin and morph controllers, as well as basic assets, materials, light and cameras with transforms animation (without shearing). It can re-import what has been exported. Only a Y-up axis is supported.

---

**NOTE** You can only export to FBX format when converting from DAE format.

---

## What’s not supported by COLLADA

The following is a list of elements that DAE (COLLADA) do not support on export or import.

- Triangles, polylist, and polygons. The FBX Converter exports polygons without holes, and imports them without holes and triangles.
- Bake & single matrices
- Variable sampling rates.
- Absolute Paths (when invalid)
- Instances
- Skew
- Non-standard Materials and maps for different parameters

- Orthographic cameras
- Normals (for skin and shape)
- Light parameters
- Vertex animation
- Material parameters animations
- Effects specialized profiles
- COLLADA physics

---

**NOTE** Export or import to DAE (COLLADA) can destroy or produce unpredictable results for some elements.

---



# Index

3ds Max conversion options 11  
3ds to FBX 12–13

## C

Collada

conversion 16  
unsupported conversions 16

conversion

3ds to FBX 12–13  
DXF to FBX 14  
FBX to 3ds 13  
FBX to DAE, OBJ, DXF (Windows) 5  
FBX to DXF 15

conversion options

DAE to FBX 16  
DXF 14  
FBX to FBX 11  
FBX to OBJ 16  
OBJ 15  
OBJ to FBX 15

copyright ii

## D

DAE to FBX 16  
unsupported 16  
DXF conversion options 14  
DXF to FBX 14

## F

FBX Converter  
Macintosh installation 2

Windows installation 1  
FBX to 3ds 13  
FBX to DXF 15  
FBX to FBX 11  
FBX to OBJ 16

## I

installation

Macintosh 2  
Windows 1

## M

Macintosh

installation 2

## O

OBJ

conversion options 15  
OBJ to FBX 15  
options  
3ds Max conversion 11  
DXF 14  
OBJ 15

## W

Windows

convert FBX to DAE, OBJ, or DXF 5  
installation 1

