

Autodesk Algor Simulation 2011 Network Installation and Registration

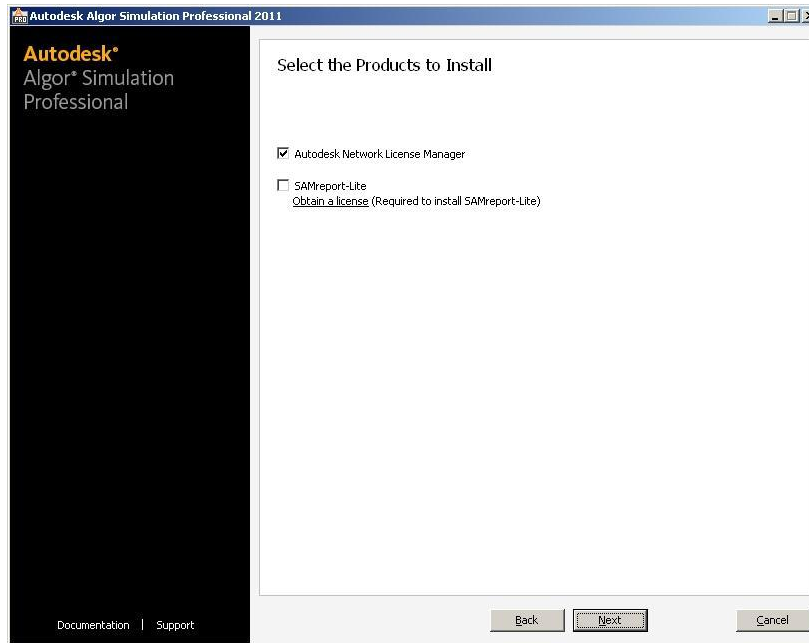
Installation Process:

The following installation instructions represent the process for installing the Autodesk License Manager (ADLM) for serving a license from a networked pc, as well as installation of the Autodesk Algor Simulation 2011 software (once the server has been set up and verified as functional).

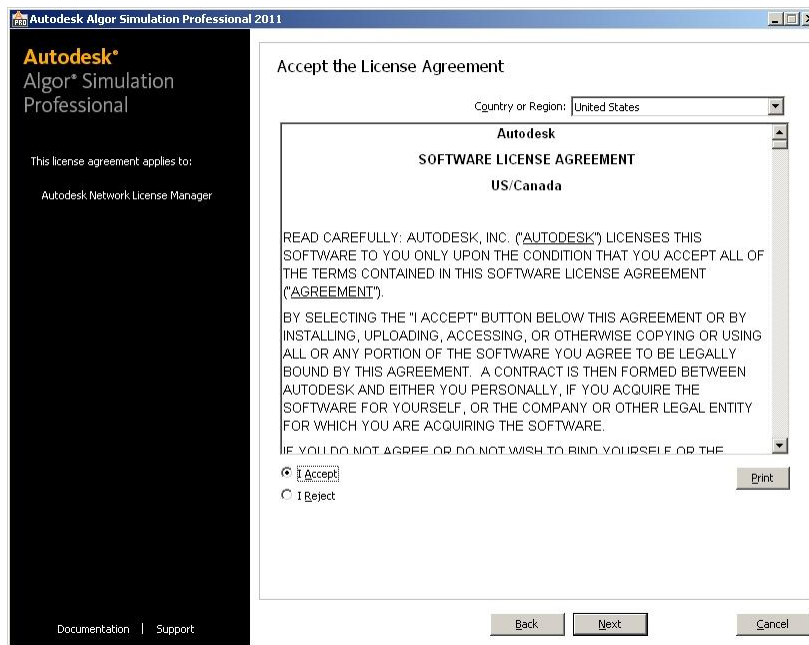
1. On the computer which will act as the Autodesk Algor Simulation License Server, insert the CD or extract the contents of the downloaded file. Choose "Install Tools and Utilities" to install the network license manager.



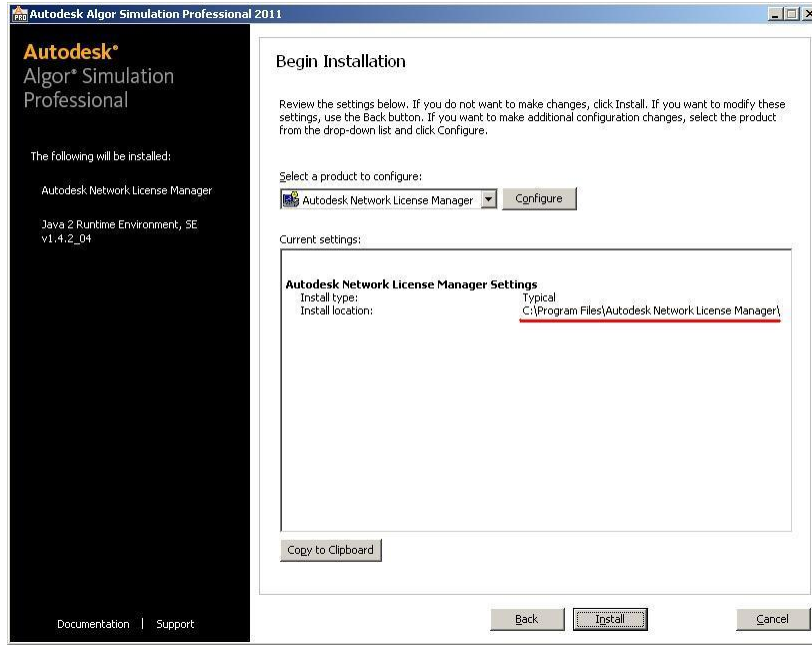
2. Activate the option to install the Autodesk Network License Manager.



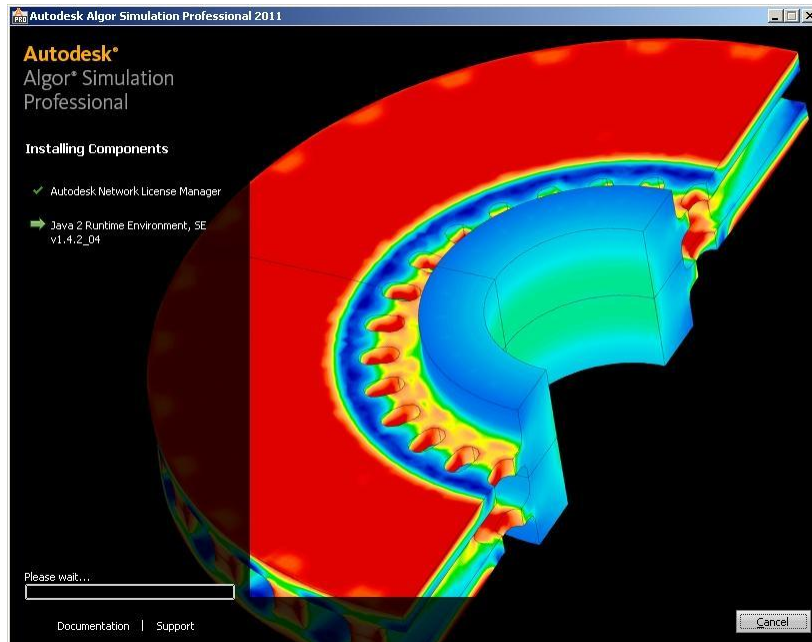
3. Accept the software license agreement, click next.



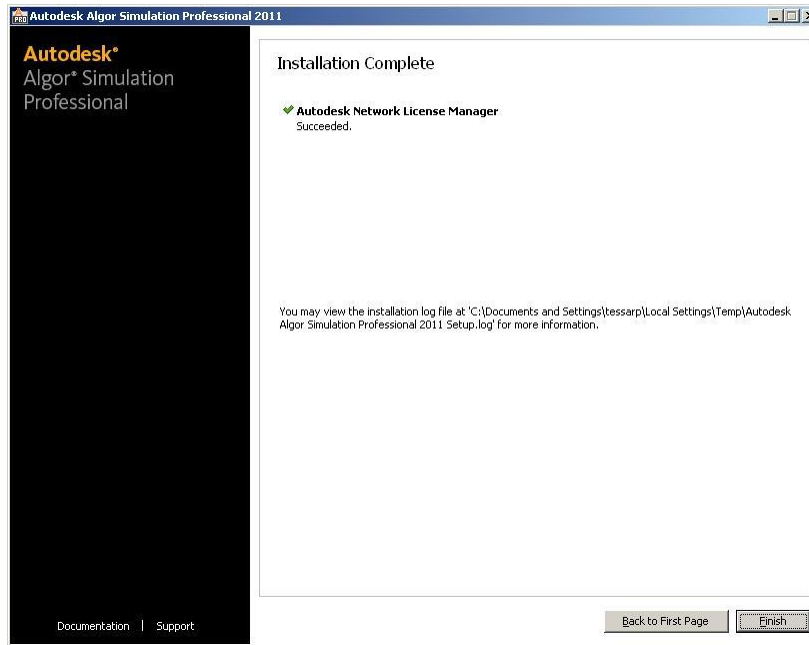
4. Note where the installation is going to be for the files (The default location is: "C:\Program Files\Autodesk Network License Manager"). Click Install.



5. Components are installing.



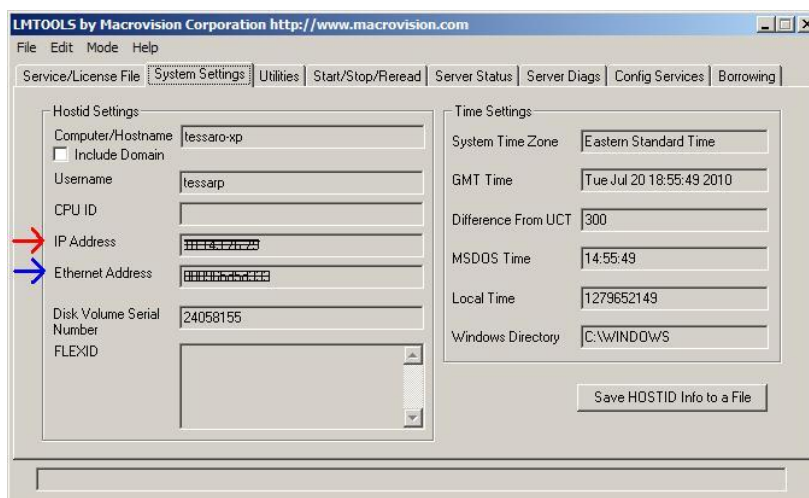
6. One will receive the message that the Autodesk Network License Manager installation is complete. The license manager has been installed, but the license has not yet been obtained.



7. We will need to gather computer information used to create the license file, and to point the Autodesk Algor Simulation 2011 software to the license server in a later step. Access "START|PROGRAMS|AUTODESK|NETWORK LICENSE MANAGER|LMTOOLS Utility" and view the "System Settings" tab. Copy the "IP Address" and "Ethernet Address". Keep LMTOOLS running for use in step 13.

(NOTE 1: One can use the "Computer/Hostname" instead of the "IP Address", but on some computers the "Computer/Hostname" is not yet associated with its "IP Address", which causes problems when trying to read the license from the license server.

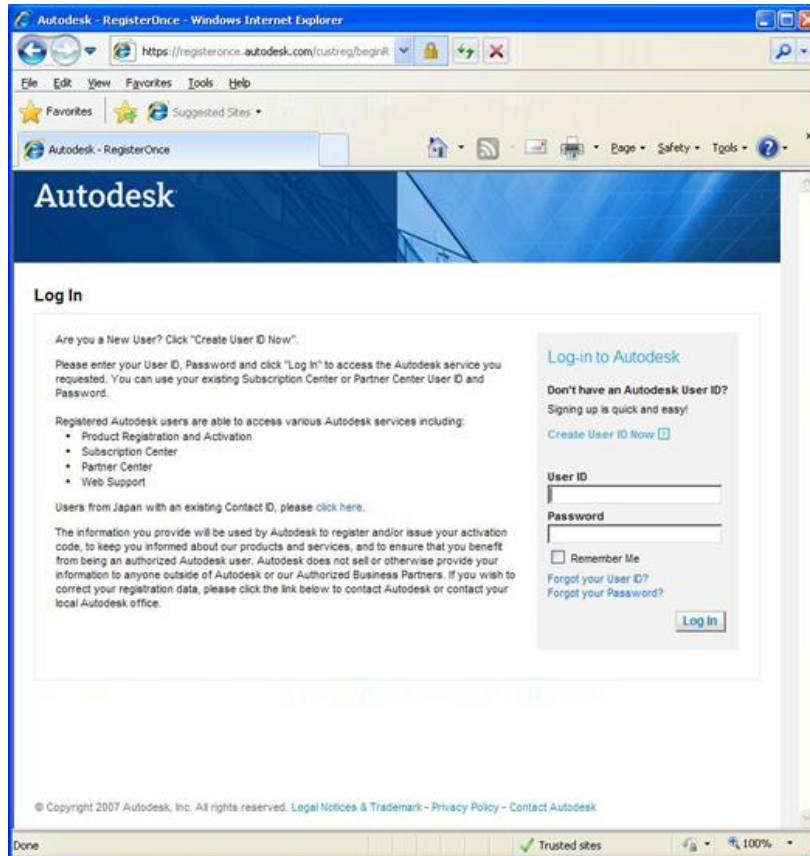
NOTE 2: Copy the first 12 digit grouping in the "Ethernet Address" field if multiple groups are listed in quotes. Only one Ethernet address can be used, which should be one that is always available.)



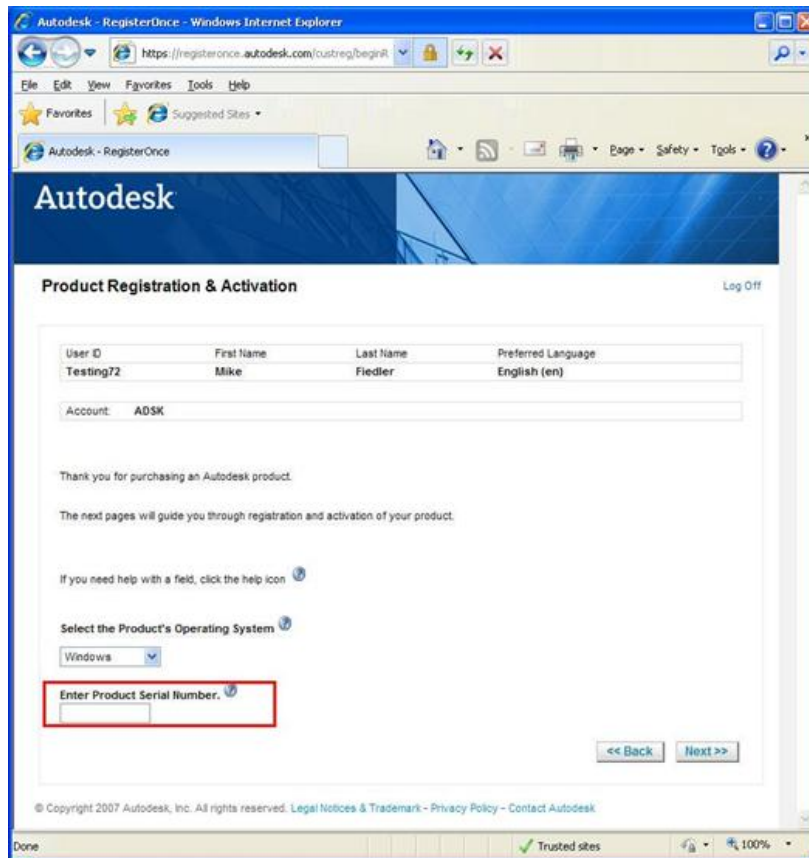
8. The next step is to register and get the network license file. Open a web browser and navigate to the following web address:

www.autodesk.com/register/

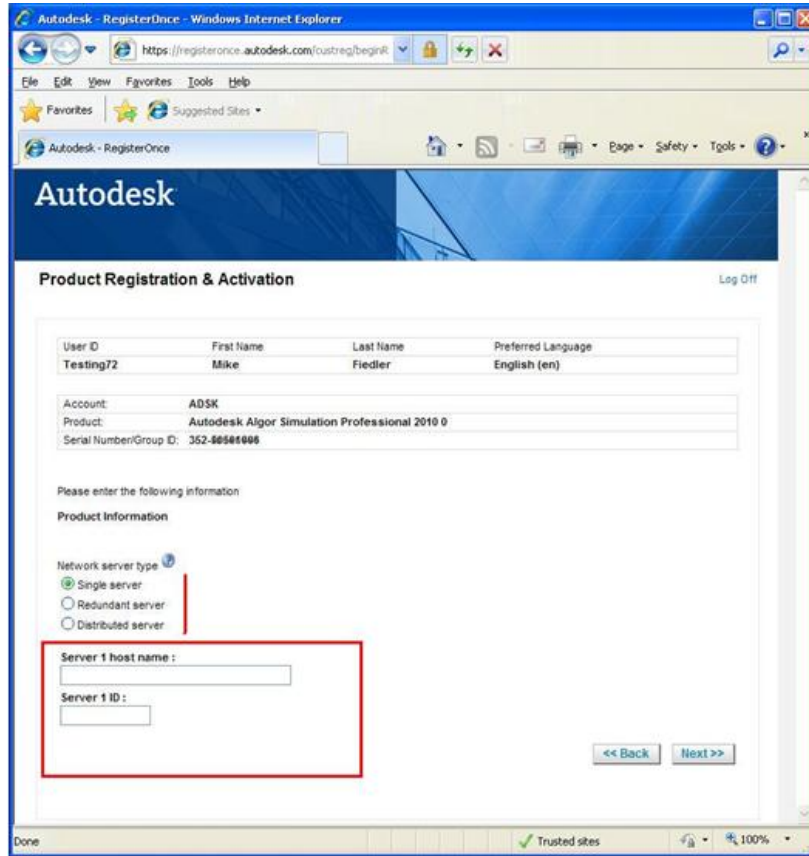
The image of the website is illustrated below. Log in using your Autodesk User ID and Password. This information is in the "Contract Manager Welcome" letter or, if you have not created an account, click "Create User ID Now".



9. Enter your serial number and click "Next".



10. Enter the "IP Address" collected from the LMTTOOLS interface into the field titled "Server 1 host name". Next, enter the "Ethernet Address" collected from the LMTTOOLS interface into the field titled "Server 1 ID" and choose the "Next" button.



11. Click the “Save License File” button once the license information has been generated.

The screenshot shows the Autodesk RegisterOnce web interface in a Windows Internet Explorer browser. The page title is "Autodesk - RegisterOnce" and the URL is "https://registeronce.autodesk.com/custreg/beginR". The page content includes a header with the Autodesk logo and a "Product Registration & Activation" section. Below this, there is a table with user information:

User ID	First Name	Last Name	Preferred Language
Testing72	Mike	Fiedler	English (en)

Below the table, there is a section for account information:

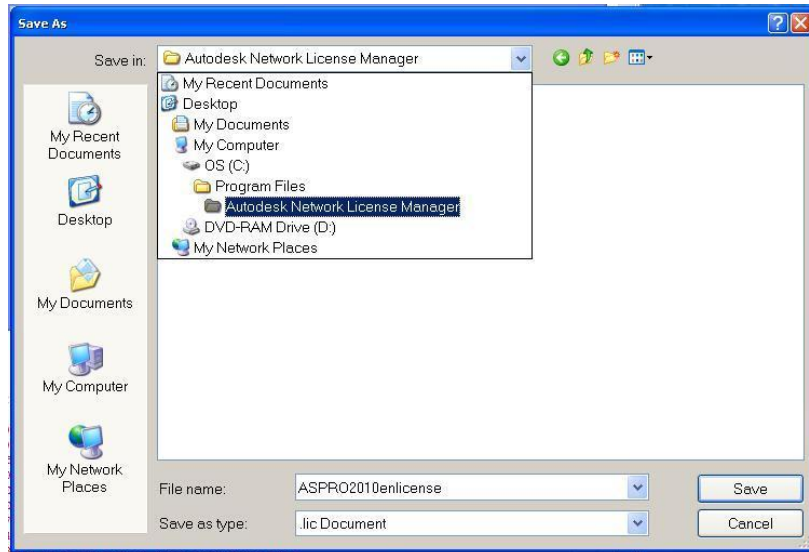
Account:	ADSK
Product:	Autodesk Algor Simulation Professional 2010 0
Serial Number/Group ID:	352-56581805

The "License Received" section contains instructions on how to save the license file and a "License File Text" section with the following text:

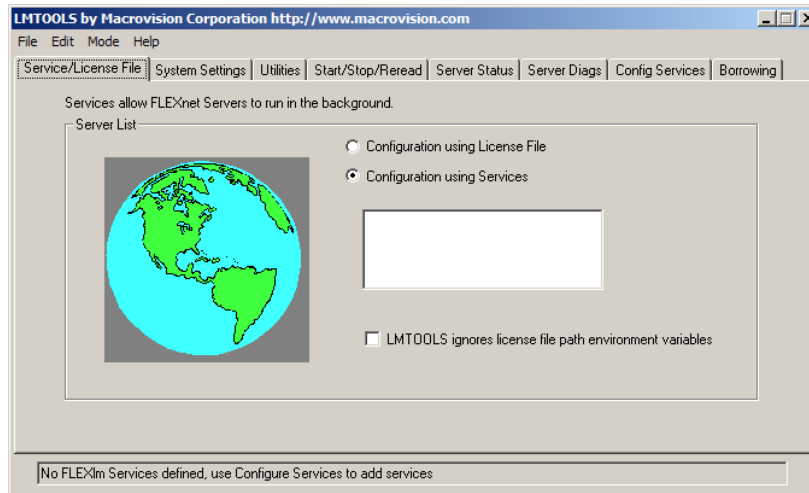
```
SERVER FIEDLER-LAPTOP 002666119843
USE_SERVER
VENDOR adskflex port=2080
INCREMENT 85505A8PPO_2010_OF_adskflex 1.000 permanent 1 \
VENDOR_STRING=if:permanent SUPSEDE DEF_GROUP=CH \
ISSUED=04-Nov-2009 BORDOM=4320 SN=362-50501666 SIGN="1234 5678 \
9101 2345 6789 0123 4567 8910 1234 5678 9101 2345 \
6789 0123 4567 8910 1234 5678 9101 2345 6789 0123 \
4567 8910 1234 5678 9101 2345 6789 0123 4567 8910 \
1234 5678 9101 2345 6789 0123 4567 8910 1234 5678 \
9101 2345 6789 0123 4567 8910 1234 5678 9101 2345 6789"
```

Below the license text, there is a "Save License File" button, which is highlighted with a red box. Other buttons include "Register and activate more products", "Print", and "Save Page". A note at the bottom states: "Note: It is recommended that you print or save the contents of this page by using the buttons above."

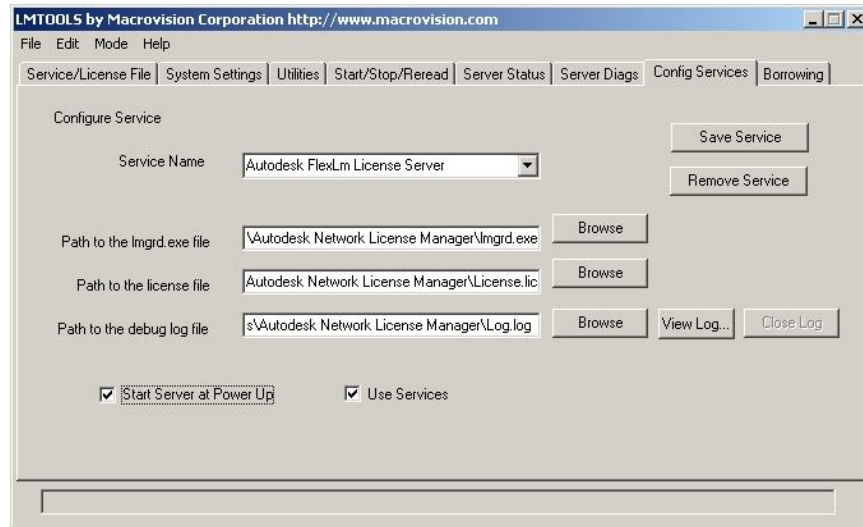
12. Save the "...license.lic" file back into the directory where the network license manager was installed (as noted in step 4).



13. Access the "Service/License File" tab in LMTOOLS and select "Configuration using Services".



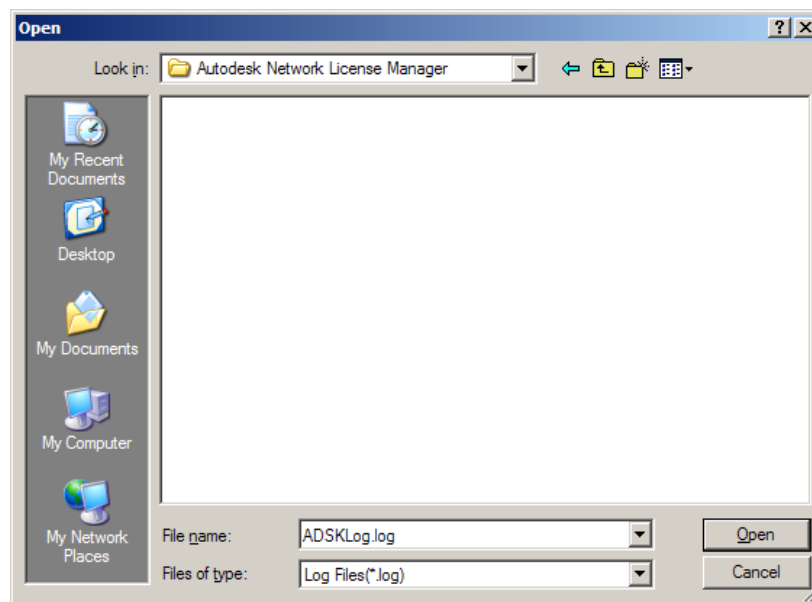
14. Navigate to the "Configure Services" tab and type "Autodesk License Manager" in the "Service Name" field, overwriting "Flexlm service 1".



15. Choose the "Browse" button to the right of "Path to the lmgrd.exe file" and select the "lmgrd.exe" file located in the directory indicated in step 4.

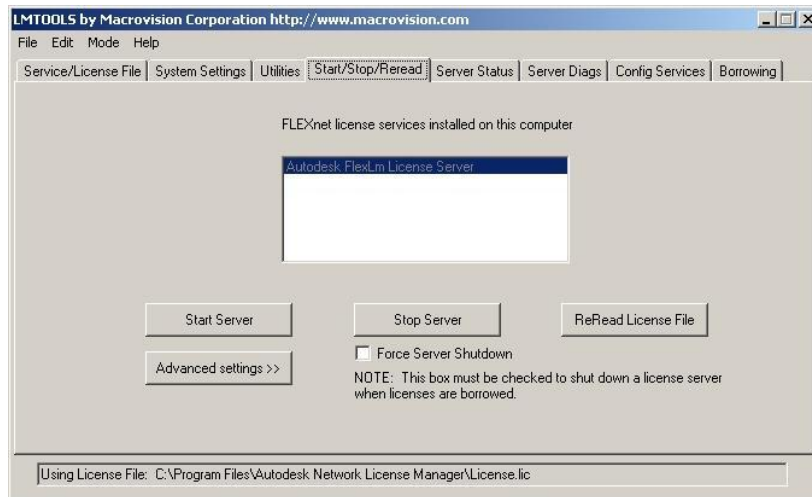
16. Choose the "Browse" button to the right of "Path to the License file" and select the "...license.lic" file located in the directory indicated in steps 4 and 12.

17. Choose the "Browse" button to the right of "Path to the debug log file" (which doesn't exist yet) and enter the name "ADSKlog.log" in the "File Open" dialog (while pointing to the directory indicated in step 4) and choose "Open".



18. Activate the "Use Services" and "Start Server at Power Up" checkboxes, then choose the "Save Services" button on the top right of the interface, then choose "Yes" to save the settings for the service.

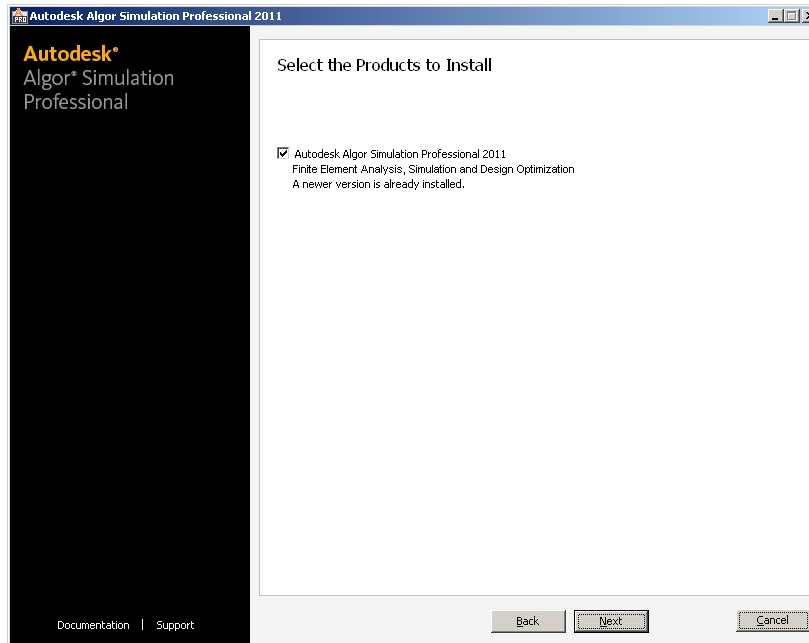
19. Access the "Start/Stop/Reread" tab and choose the "Start Server" button. A message should appear in the bottom on the LMTOOLS interface indicating the service was successfully started.



20. The license server should now be up and running. The next step would be to go to the client machines and install the Autodesk Algor Simulation 2011 product itself. Insert the CD on the client machine (which may also be the same computer for which the license server was installed). Click the button to install the product.



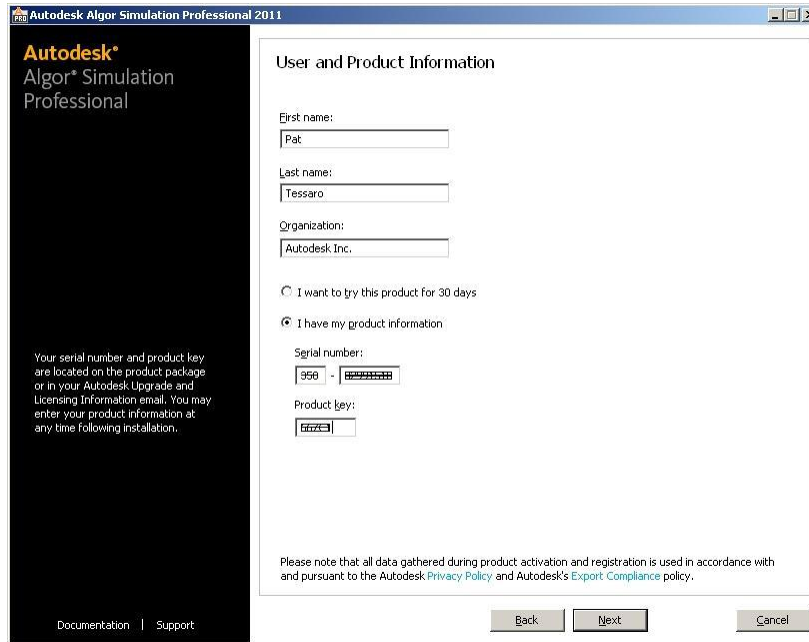
21. Choose to install the ADSK Algor Simulation and click "Next".



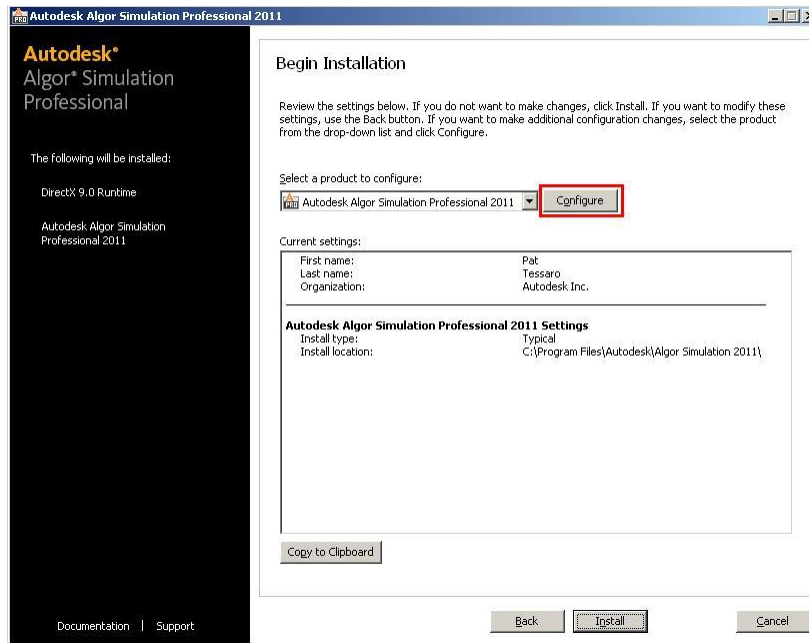
22. Then agree to terms and conditions.



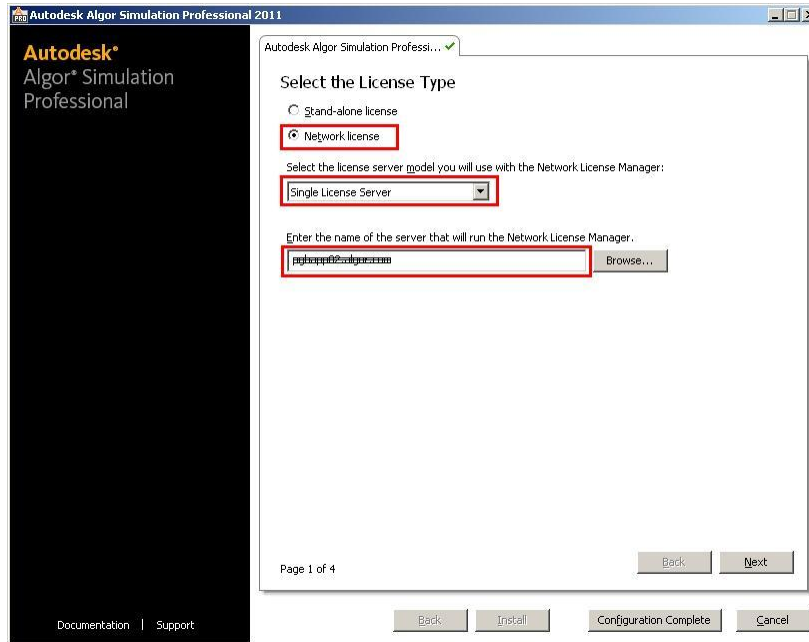
23. Then enter the serial number and product key as well as your name and company. The serial number and product key can be found on the back of the product box, as well as your "Subscription Order Status" complete email.



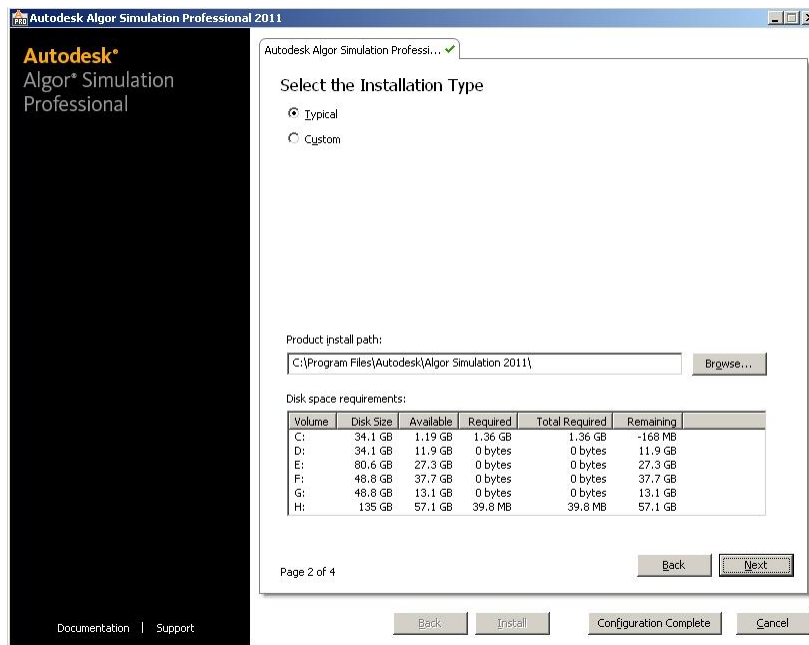
24. Then, with a network setup, you must select the "Configure" button.



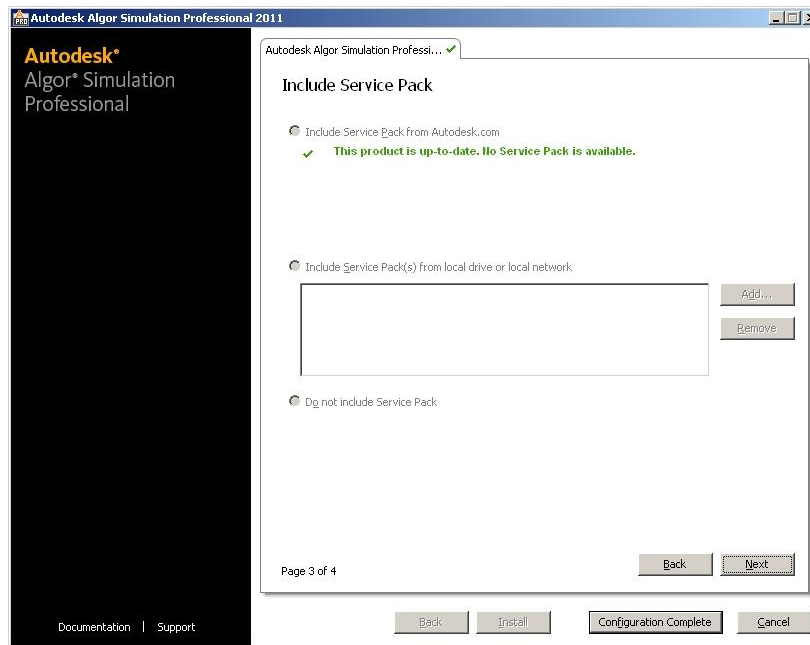
25. Then select the “Network license” option and select “Single License Server” from the pull-down combination box. Enter the “IP Address” (collected in step 7) into the field asking “Enter the name of the server that will run the Network License Manager” and choose “Next”.



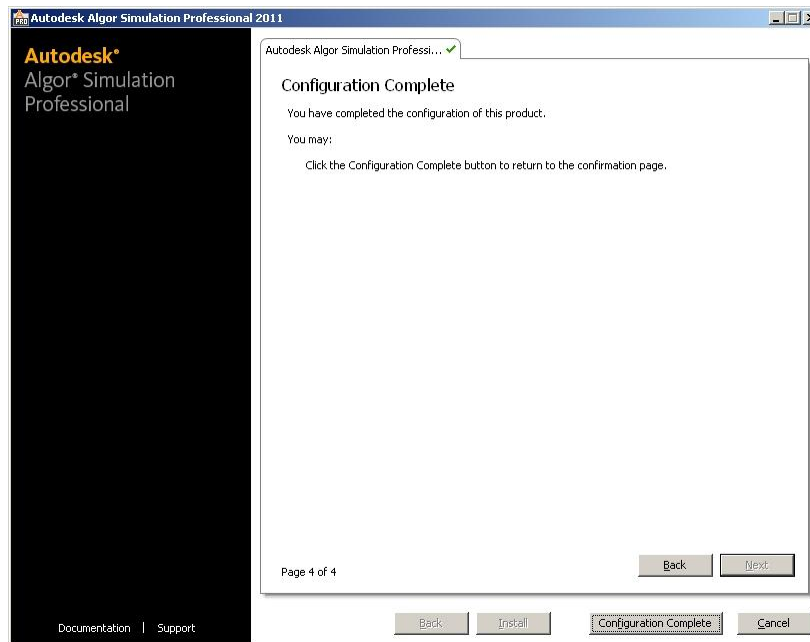
26. Keep the installation type as “Typical” and choose “Next”.



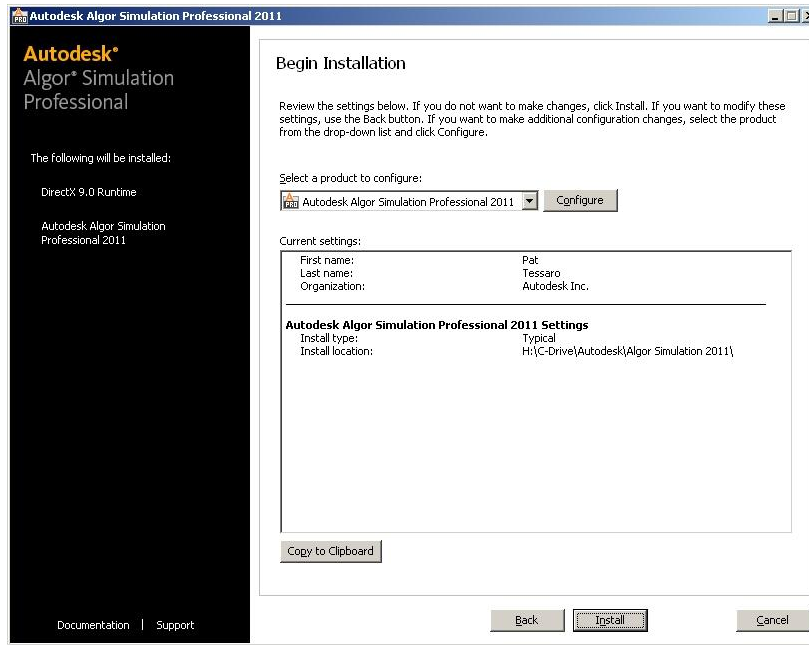
27. The installer will check for updates... choose "Next".



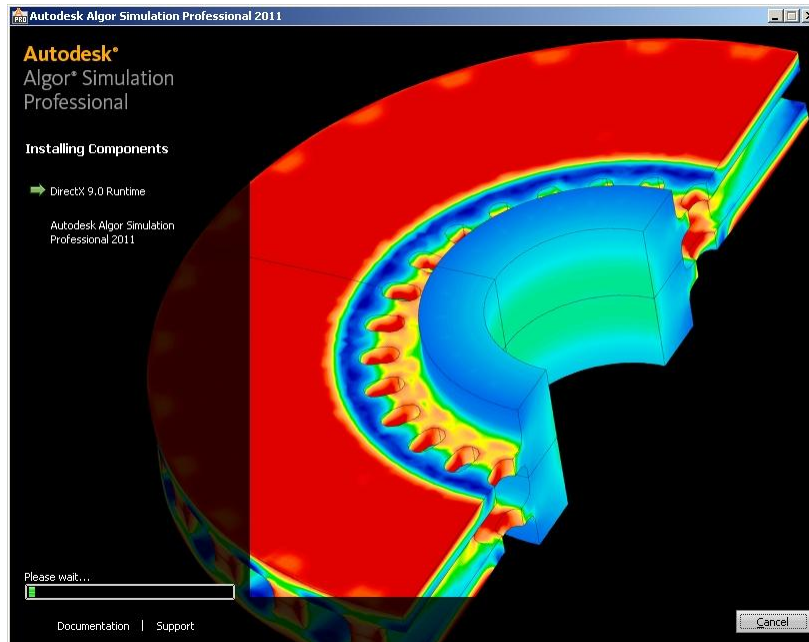
28. Choose the "Configuration Complete" button.



29. We now can resume with installation of the product itself via the "Install" button.



30. Installation begins on client machine.



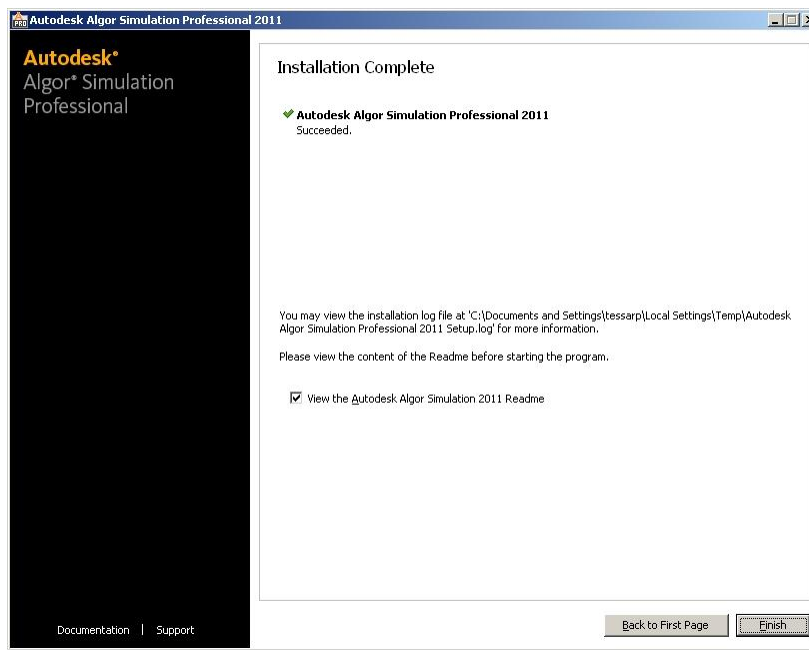
31. If any of the following CAD packages are installed to your workstation, additional installation wizard screens will appear to enable InCAD between these CAD packages and Algor.

Pro/ENGINEER
KeyCreator
Mechanical Desktop
CoCreate
SpaceClaim

Follow the screen prompts to finish the InCAD installation for each installed CAD package. Not all installed CAD packages require this step, just the packages listed above.

(NOTE: If one installs any of the CAD programs listed above after the Autodesk Algor installation is complete, one can access "ADD/REMOVE Programs" from the computer's "Control Panel" and "Repair" the installation which will provide the ability to establish the InCAD with the newly installed CAD package.)

31. Installation Complete! You can now click the "Finish" button and launch the software from "Start|Programs|Autodesk|Autodesk Algor Simulation 2011".



Any questions, please call 1.800.48.ALGOR to speak with technical support and select option "2", then option "6", then option "4". Also, one can log on to the Autodesk Subscription Center and enter a question for support. Thanks!