

What's New in Autodesk® Buzzsaw® 2012

Autodesk Buzzsaw 2012

Autodesk® Buzzsaw® 2012 enables you to deliver more effective AEC project team collaboration. Project teams can streamline BIM processes and workflows across companies and locations with automated file synchronization between Autodesk Vault Collaboration and the Buzzsaw cloud. Buzzsaw users can view the latest project designs and information from anywhere with Buzzsaw® Mobile for iPad™ and iPhone®. Project teams can coordinate project work more efficiently by combining informal, real-time team communication with automated Buzzsaw file notifications in the Autodesk Activity Stream, and automate file uploads and downloads by scheduling Buzzsaw Sync across folders.

Buzzsaw Mobile

Buzzsaw Mobile for iPad™ and iPhone®

The Buzzsaw Mobile app for iPad™ and iPhone® lets Buzzsaw users securely access Architecture, Engineering, and Construction (AEC) project documents and designs from anywhere. Buzzsaw users can view DWF® files, standard office documents and images, upload project photos directly to the Buzzsaw cloud, and use with the AutoCAD® WS app to view and edit DWG™ files managed on Buzzsaw.

AutoCAD WS direct access to Buzzsaw (iPad, iPhone, and Android)

You can securely access any DWG® and DXF® file from Buzzsaw directly with AutoCAD WS. From AutoCAD WS, you can login to your Buzzsaw site, download a file, view and edit in AutoCAD WS, and save the changes to Buzzsaw. AutoCAD WS with direct access to Buzzsaw files is available on iPad, iPhone, and Android devices.

Buzzsaw File Access from 3rd Party Mobile Apps

In addition to models and design documents, AEC projects include many other project documents like schedules, spreadsheets, contracts, and photos. You can access and edit Buzzsaw project files from a growing number of Mobile Apps that support the industry standard WebDAV protocol.



Buzzsaw Sync

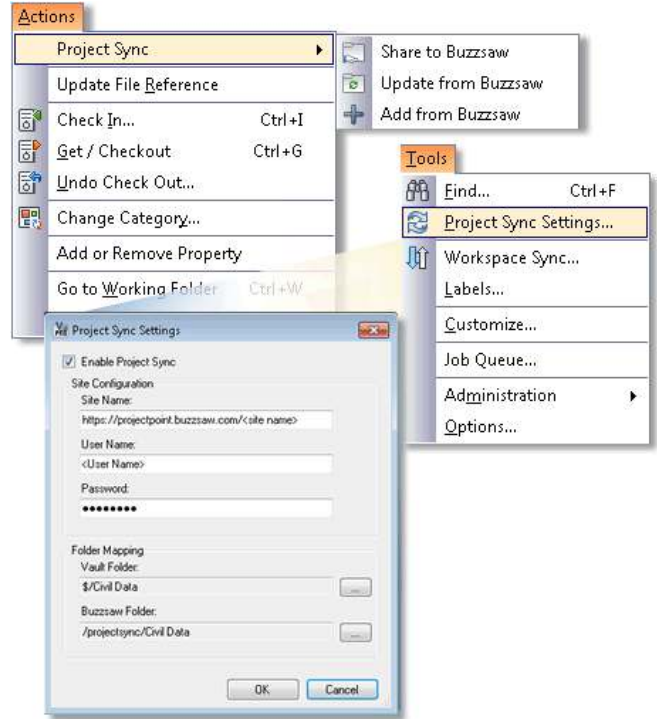
Make file upload and downloads painless by automatically synchronizing project folders and subfolders from a local desktop or server to the Buzzsaw cloud. Users can control synchronization scheduling and upload models without interrupting the workflow, and leverage all Buzzsaw permissions to securely synchronize, exchange, and access project information. Buzzsaw Sync 2012 also includes support for corporate proxy server configurations, improved file upload and download performance, and usability and quality improvements.

Extend Autodesk® Vault Collaboration AEC to the Buzzsaw Cloud

Coordinate enterprise, behind-the-firewall data management with secure and simple cloud-based file exchange to optimize data management, collaboration, and anywhere access across internal and external project teams. Better support BIM processes and workflows across companies and geographies and provide web and mobile access to files by securely connecting project data to the Buzzsaw cloud with automated document, design, and model exchange between Autodesk Vault Collaboration and Buzzsaw.

The Project Sync feature provides automated file and folder synchronization between Vault Collaboration AEC and Buzzsaw. This new capability enables Vault Collaboration AEC users to automatically synchronize files from a folder in Vault with a folder in Buzzsaw. The synchronization can be configured based on specific events and works in both directions; files can be automatically uploaded from Vault to Buzzsaw and vice versa, providing simple, reliable, two way communications between project team members.

Project Sync is available for download from the Site Information Page on your Buzzsaw site. In order to install and configure Project Sync, you must have Autodesk Vault Collaboration AEC installed and must be a Vault Administrator.



Buzzsaw File Notifications in Activity Stream

Coordinate project teams more efficiently by combining informal, real-time team communication with automated Buzzsaw file notifications in the Autodesk Activity Stream. You can also you can access and download Buzzsaw files from Bluestreak using any browser. The Activity Stream is available on the Web, on the desktop, and with the Bluestreak Mobile app for iPhone® and iPad™.

To get started, go to <http://bluestreak.autodesk.com>.



Other Enhancements

- Performance Improvements for large Buzzsaw sites, including improved login speeds for all site users and improved performance for Administrators (Members Tab, Groups Tab, Statistics Tab, Member List, and Refresh command).
- DWG® TrueView 2012 and Autodesk® Design Review 2012 Integration.
- New Site Information page and Information box to notify users about new features.
- Quality and performance improvements.

Autodesk Buzzsaw and AutoCAD are registered trademarks or trademarks of Autodesk, Inc., and/or its subsidiaries and/or affiliates in the USA and/or other countries. All other brand names, product names, or trademarks belong to their respective holders. Autodesk reserves the right to alter product and services offerings, and specifications and pricing at any time without notice, and is not responsible for typographical or graphical errors that may appear in this document.

© 2011 Autodesk, Inc. All rights reserved.

Autodesk®