

# Stand-Alone Installation Guide and Getting Started with Autodesk Ecotect Analysis

This document describes how to install and activate Autodesk® Ecotect® Analysis 2010 software on your computer using a stand-alone license. For information about installing network-licensed versions of the program, see the *Network Administrator's Guide*. This guide also includes a basic introduction to the user interface and the operation of this tool.

# Contents

Introduction.....	4
System Requirements .....	4
Minimum Software System Requirements .....	4
Minimum Hardware System Requirements .....	4
Product Serial Number.....	4
Installation .....	5
Administrator Rights.....	6
The Installation Wizard .....	6
Setup—Welcome Page .....	6
Setup—Software/Utilities to Install .....	6
Setup—Autodesk License Agreement.....	7
Setup—User and Product Information.....	7
Setup—Select Destination Location .....	8
Setup—Select Components .....	8
Setup—Select Start Menu Folder.....	8
Setup—Select Additional Tasks .....	9
Setup—Product Licensing Method .....	9
Setup—Ready to Install.....	9
Setup—Installing .....	10
Setup—Required Components .....	10
Setup—Final Page .....	10
Activating Your License .....	10
Running in Trial Mode .....	11
Selecting the Activate Option .....	11
Changing Your Product Serial Number.....	12
Working with Autodesk Ecotect Analysis 2010.....	14
Pages.....	14
Project Page.....	14
3D Editor Page.....	14
Visualize Page .....	15
Analysis Page .....	15
Reports Page .....	15
Panels.....	15
Training Packages .....	16

Accessing the Web Service Tools for Whole Building Analysis..... 16

# Introduction

Autodesk® Ecotect® Analysis 2010 software is a comprehensive concept-to-detail sustainable design analysis tool, providing a wide range of simulation and analysis functionality on a single platform. Powerful web-based whole-building energy, water, and carbon analysis capabilities<sup>1</sup> converge with desktop tools for visualizing and simulating performance of the building model within the context of its environment.

Use the desktop tools and web-service functionality together to help create more sustainable designs.

## System Requirements

Autodesk Ecotect Analysis 2010 is a Microsoft Windows® application. While it will run on quite modest hardware, some of its analysis functions can be processor-intensive, and many of its advanced graphical display abilities are best viewed using a hardware-accelerated graphics card. The following are the minimum requirements for running this software.

### Minimum Software System Requirements

- Windows® 95 operating system (or later)
- Windows NT® 3.5x operating system
- Windows® XP operating system
- Windows® Vista operating system

*Note: Windows® XP 64 and Windows® Vista 64 are supported in 32-bit compatibility mode only.*

### Minimum Hardware System Requirements

- Intel® Pentium® II processor or equivalent, 300 MHz or faster
- 128 MB RAM or higher
- 85 MB free hard disk space or higher
- OpenGL® hardware accelerated video card
- 1,024 x 768 high-color (16-bit) screen resolution or higher

## Product Serial Number

When you install Ecotect Analysis, you are prompted to enter your serial number and product key in the Product and User Information page. The serial number and product key are located on the outside of the product packaging, or in the email you received if you downloaded your product. Make sure to have these available before you install the program so that you don't have to stop in the middle of the installation. Transfer the detachable sticker or save a copy of the email to a safe location to keep this information for future transactions. A software license manager embedded into the product prevents unauthorized use of the product and will require you to input your serial number in order to register and activate your copy of Autodesk Ecotect Analysis.

---

<sup>1</sup> Customers who purchase a Subscription to their Autodesk Ecotect Analysis license can access the Autodesk® Green Building Studio® web-based service for the duration of their Subscription term in order to conduct whole building energy, water, and carbon analysis.

**Product and User Information**

Serial number\*:  
 -

Product key:

First name:

Last name:

Organization:

If you do not yet have your Autodesk Ecotect Analysis serial number, or are not yet ready to activate, you can still install the software and run in a fully functioning trial mode for 30 days from date of installation. After 30 days the software will run in Demo Mode, without the ability to save or print. You can still activate the software as described in the *Activating Your License* section below and even change the product serial number you wish to use for activation.

---

NOTE: If you have lost your serial number or product key, contact Autodesk Services & Support for assistance.

---

## Avoiding Data Loss During Installation

The Ecotect Analysis installation process may stop if some applications (such as Microsoft® Outlook® or virus-checking programs) are running. Close all running applications to avoid possible installation problems and data loss.

## Installation

To use the product, you must install the product, register and activate it, and then launch it. This section provides instructions for installing and activating Ecotect Analysis for an individual user on a stand-alone computer. For information about installing a network licensed version of the program, see the *Network Administrator's Guide*.

Installing Autodesk Ecotect Analysis 2010 can be done directly from the product DVD. Depending on your operating system and its settings, the installer for the software will usually run automatically after inserting the DVD into your computer. If it does not, you can run it manually by locating the setup.exe file in the top directory of your DVD drive. Using your web browser, simply double-click the left mouse button on this file when you locate it.

Similarly, if you have downloaded the program from the internet, browse to the location where you have saved the file and double-click the left mouse button on this file.

## Administrator Rights

As the installation of this software also includes secure licensing features, it needs access to areas of the system registry and file system that only users with administrative privileges are permitted to access. Thus, in order to properly install this software and its licensing components, you must first log on to the computer with an account that has administrative privileges. If you do not, the installer will issue a warning and not let you continue.

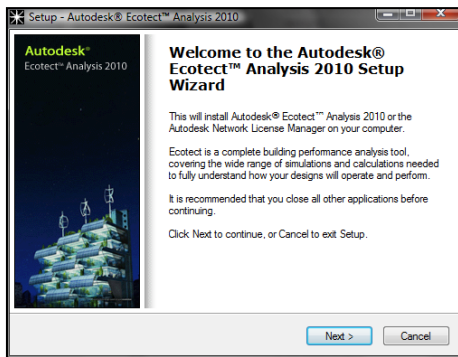
## Installing and Running the Product

### The Installation Wizard

The installer will first prompt you with a series of wizard pages, many of which will require you to make choices or interact in some way.

#### Setup—Welcome Page

---

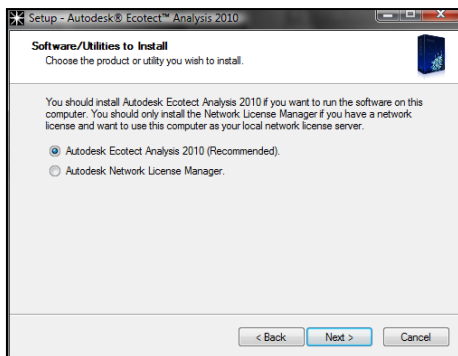


This page is displayed when the installer is first run. Its aim is to show which software it is about to install and provide a brief description of it.

Click the Next > button to continue.

#### Setup—Software/Utilities to Install

---

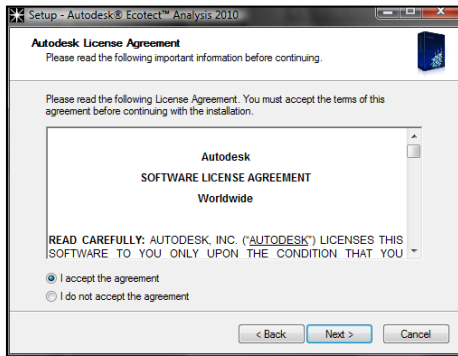


By default, the actual Autodesk Ecotect Analysis 2010 software is installed. This is the typical, and recommended, option for this page.

The Autodesk Network License Manager is used by an administrator to set up a local license server. You must have a network license, which can be purchased only from an Autodesk sales partner to use this option. A network license is not *available* when purchasing online.

Select your option and click the Next > button to continue.

## Setup—Autodesk License Agreement



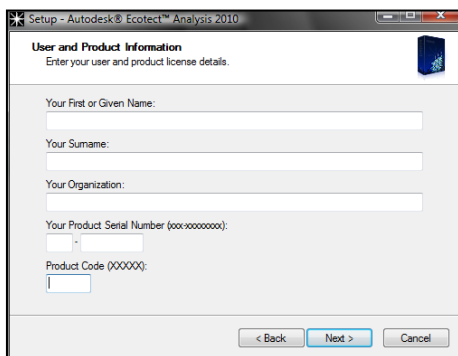
A printed license agreement is not included in your product packaging. Instead, the license agreement is displayed during the installation process. When you accept the license agreement and complete the installation, you can find a copy of your license agreement in the *EULA.rtf* file in the install directory of your product.

If you choose the "I Do Not Accept the Agreement" option after reviewing the terms of the license agreement, the installation will be canceled. If you reject the license agreement, you have 30 days from your date of purchase to return this software. To receive a full refund, return this software along with the software package, all other items in this package, and dated proof of purchase to the location where you acquired it.

In order to continue with the installation, you must accept the terms and conditions within the Autodesk License Agreement.

Select the "I Accept the Agreement" option and click the Next > button to continue.

## Setup—User and Product Information

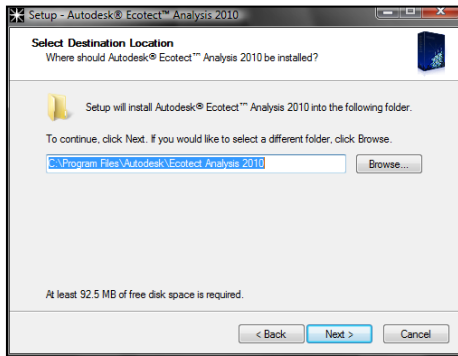


Use this page to enter your name and organization, as well as the product details you will find either on the cover of your DVD or in the electronic receipt you received after purchase.

It is important that you take care entering the product serial number and product code as these will be used later in the license activation process.

Enter all your details and click the Next > button to continue.

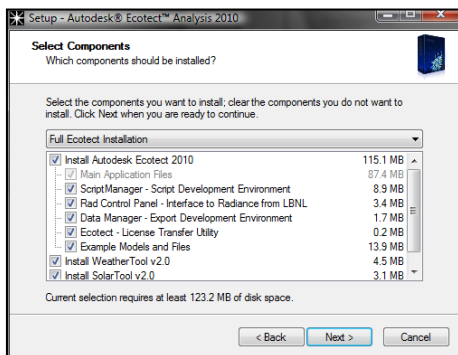
## Setup—Select Destination Location



You use this page to select the folder into which the software will be installed. It is recommended that you use the default location as this will place the software in the same location as any other Autodesk products you may have installed. However, the software itself can be installed anywhere on your system.

Ensure the installation folder is where you want it and click Next > to continue.

## Setup—Select Components

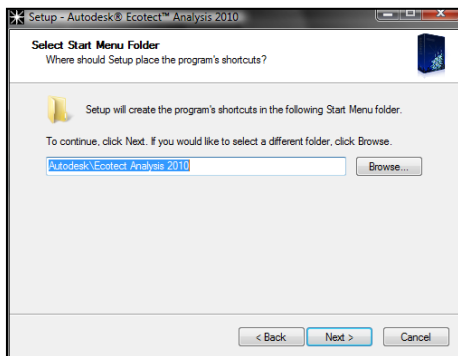


This wizard page allows you to select the individual components of the software to install. You can select from a series of default setups using the large drop-down list at the top, or manually check/uncheck the individual components you need.

All the components absolutely required for the software to run should be grayed out as these must always be installed.

Click the Next > button to continue.

## Setup—Select Start Menu Folder



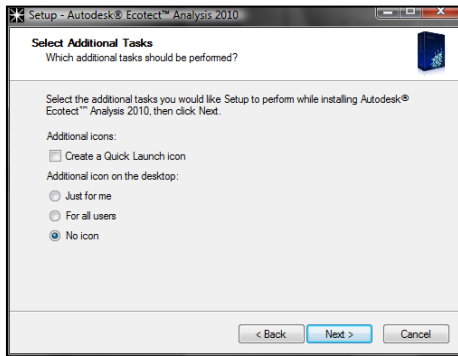
In addition to copying all the software and license files to the destination folder, the installer also creates a series of links in your Start Menu. You can use this page to enter the folder and subfolder(s) in which to place these links.

It is recommended that you manage your folders here instead of manually moving them later as the uninstaller will likely be unable to find or delete the moved links if you uninstall the software.

You can create subfolders by simply using a backslash (\) character between the names making up each folder.

Click the Next > button to continue.

## Setup—Select Additional Tasks

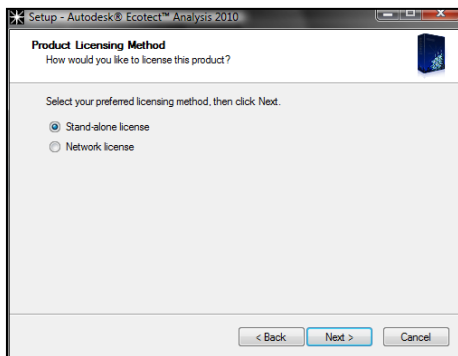


In addition to the links in the Start Menu, the installer can also create links on your desktop and in the Quick Launch area of your application bar.

When creating a desktop icon, you can choose to create this just for yourself or, as you must be an administrator to do this install, every user. You should be judicious in your use of the For All Users option as some people take great care of their personal desktop layouts.

Choose the additional icons you wish to create and click Next > to continue.

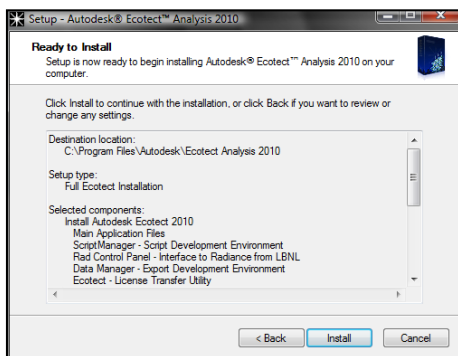
## Setup—Product Licensing Method



Select Stand-alone license method and click the Next > button to continue.

For network licenses please refer to the *Network Administrator's Guide*. Although both options are available during installation, you can only choose the one that matches the specific license you have purchased. Choosing the wrong one will mean that the wrong license files will be included and you will likely have to completely reinstall to obtain your correct license.

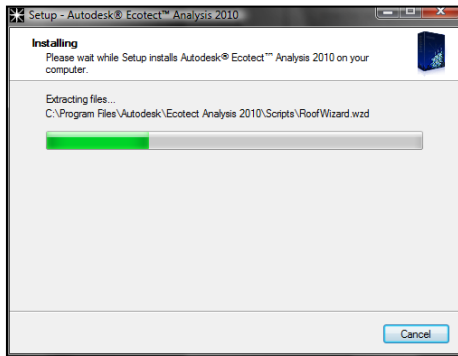
## Setup—Ready to Install



Once you have answered all the questions required by the installer, a summary of all your decisions will be shown here. This gives you an opportunity to review the installation before actually proceeding with all the required tasks.

Once you are happy with all the options selected, click the Install button to continue.

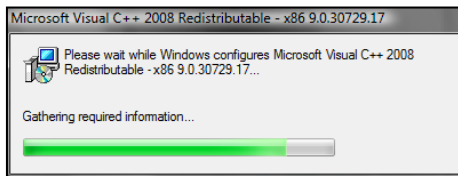
## Setup—Installing



As the installation proceeds, a message line is updated with each task being undertaken and the progress bar indicates the relative percentage complete.

You will need to wait for all tasks to complete, which could take a couple of minutes.

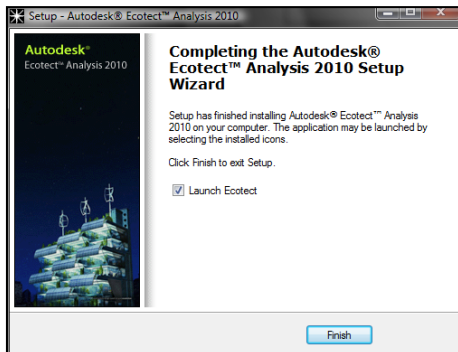
## Setup—Required Components



Depending on your operating system, the installation may need to install additional Windows system components. These are widely used components that should not affect your system or other software.

Again, you will need to wait for each of these components to complete its own separate installation.

## Setup—Final Page



Once all files and components have been copied and installed correctly, the installer will display this final page. If you would like to run the software immediately, make sure the Launch Ecotect option is selected.

Click the Finish button to close and complete the installation.

# Activating Your License

Product activation is a software-based license management technology incorporated into many Autodesk® products, including Autodesk Ecotect Analysis. It is a secure and hassle-free process that authenticates licensed users running Autodesk software. The process verifies that the serial number is legitimate and has not been activated on more computers than are eligible. This is an automated, electronic process that requires an Internet connection.

Autodesk Ecotect Analysis can be run immediately after installation. Upon first use, a licensing wizard similar to that shown in Figure 1 will be displayed.

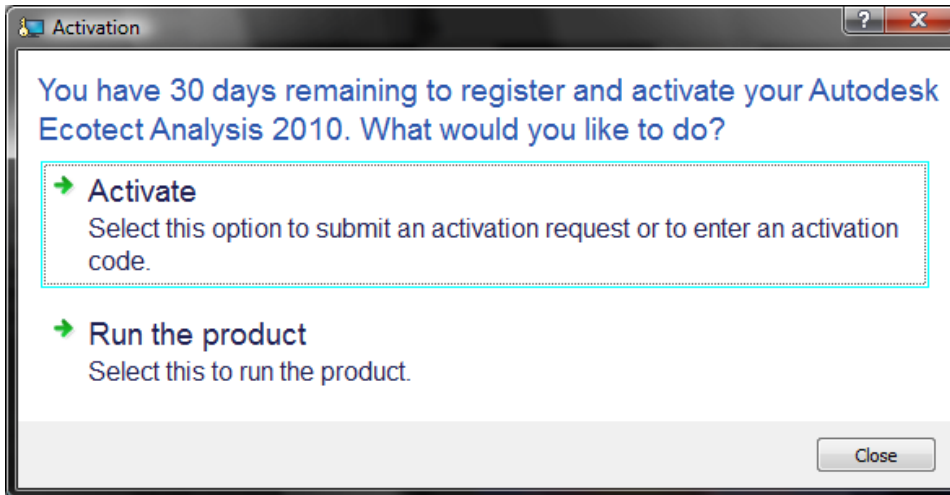


Figure 1—The first page of the licensing wizard displayed when Autodesk Ecotect Analysis is first run.

### Running in Trial Mode

To run in trial mode, select the Run the Product option. The full application will then launch. This option will be displayed each time you run the software for the next 30 days.

### Selecting the Activate Option

When you choose the Activate option, a larger pop-up window will appear similar to that shown in Figure 2. This will contain the serial number you entered during the install process as well as a newly generated request code. These two numbers are used by the license activation server to generate an activation code that authorizes the particular computer you are currently using to run the software.

If you do not already have an activation code for the displayed combination of serial number and request codes, select the Get an Activation Code option and click the Next >> button.

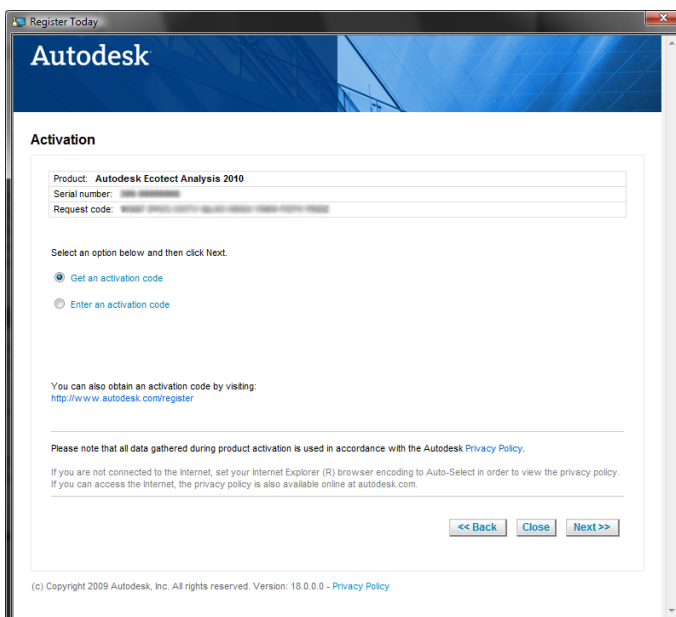


Figure 2—The Activation page of the licensing wizard.

If you already have an activation code, select the Enter an Activation Code option. This will display an additional area within the window into which you can paste or type the activation code.

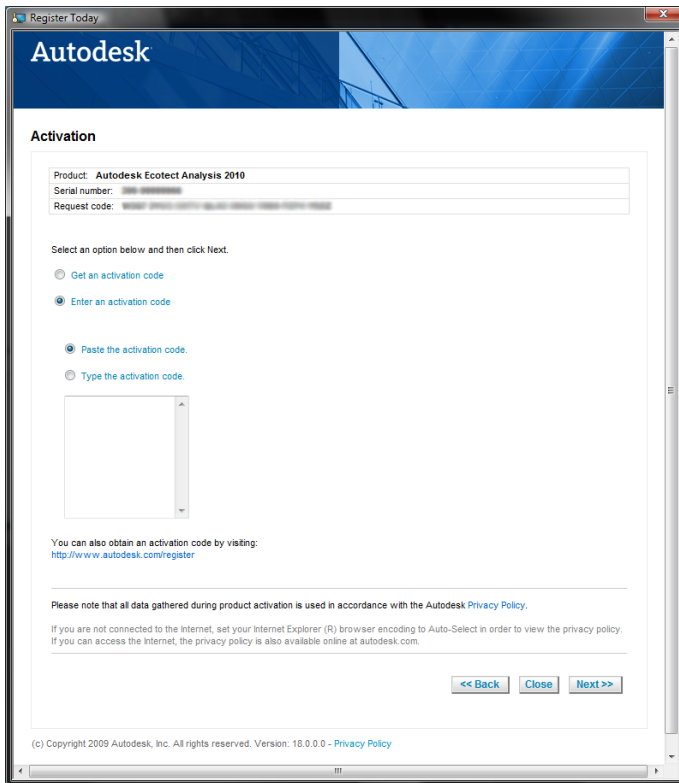


Figure 3—Pasting in your activation code.

Once you have entered your activation code, select the Next >> button to continue.

From this point on, simply follow the detailed instructions on each page.

Alternatively, you can register and activate your product online by accessing <http://www.autodesk.com/register> and following the steps outlined above.

## Changing Your Product Serial Number

You can change the product serial number you entered during the install process by using either the Product and License Information item in the main Help menu or the Product Information link in the About dialog box, as shown in Figure 4.

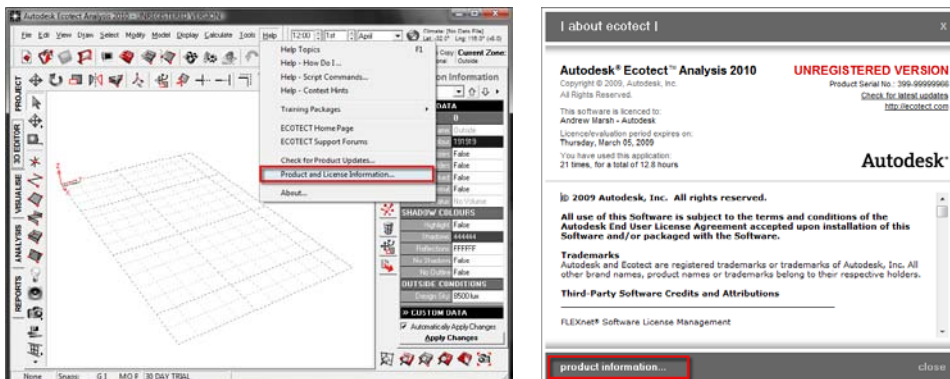


Figure 4—Ways to display your Product License Information.

Both of these methods will display the Product License Information dialog box, as shown in Figure 5. This dialog box shows a range of information about both your product and the computer you are currently running it on. To change the entered serial number, locate and click the Update... button immediately to the right of it.

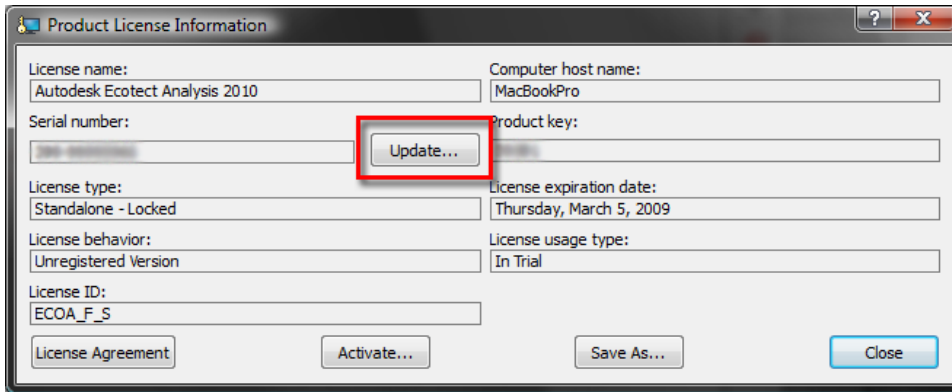


Figure 5—Using the Update... button to change your product serial number.

This will display the Update the Serial Number dialog box. Simply enter your new serial number and click the OK button.

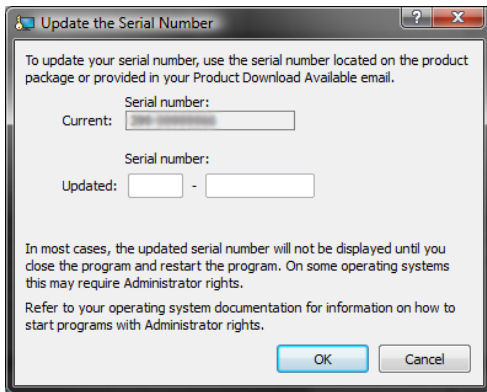


Figure 6—Updating your product serial number.

# Working with Autodesk Ecotect Analysis 2010

When you first run Autodesk Ecotect Analysis 2010, the main application window will be displayed. This is a single-document application, meaning that you can only work on one model file at a time. However, you can simultaneously run as many copies of the desktop software as you would like, opening a different model in each.

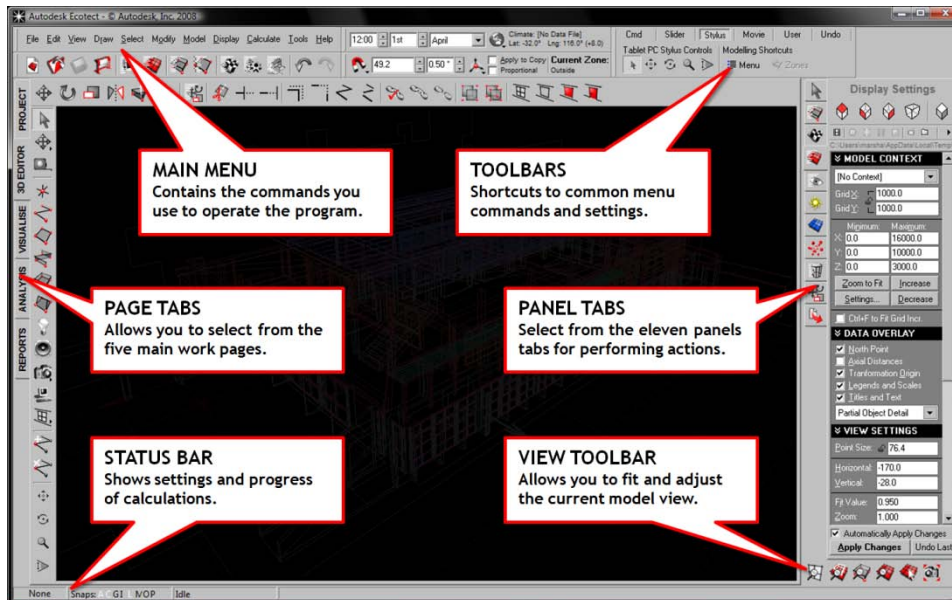


Figure 1—The components of the main Ecotect Analysis application window.

As you will spend a lot of time in the main window when using Ecotect Analysis, an attempt has been made to shape the program so that it does not rely on a labyrinth of cascading dialog boxes to perform actions and adjust parameters. To this end, the interface is laid out in different pages and a series of panels for operating on selected objects and zones.

## Pages

Pages represent the main work areas in Ecotect Analysis, which are entered by using the tabs running down the left-hand side of the main window. Each page allows you to work on a different aspect of the model, including its embedded data, geometric modeling, data visualization, analysis graphs, or tabulated summaries.

### Project Page

This page allows you to add information about the project that will be stored along with the model. This information is also useful for archival and quality assurance purposes. The Notes section is entirely flexible and can contain any amount of formatted text.

### 3D Editor Page

This page is where the actual geometric building model is generated and edited. It consists of a main editable drawing area surrounded by edit toolbars. The drawing toolbar along the left-hand side is where all the object generation tools are found, while the model manipulation tools are found along the top in the editor toolbar.

## Visualize Page

This page contains the OpenGL canvas, which uses hardware accelerated graphics to display hidden-line and rendered views of the current model. In this canvas you can store and manipulate the various camera views within the model as well as display a range of spatial analysis information.

## Analysis Page

This page provides calculation functions for a wide range of analysis to be carried out on the model. These fall into different categories, each represented by a separate tab section beneath the main graph.

## Reports Page

This page contains an integrated utility canvas for displaying data tables, HTML pages, and summary information about the current model. If you open an HTML or MHT file in Ecotect Analysis software, it will be displayed here. Similarly, if you run a script that uses the Report Generator, its output will also be displayed here.

## Panels

A series of control panels are located on the right side of the main application window. Each panel contains controls for different aspects of the model and its analysis. Many of these panels allow you to perform operations on the current selection set, be it an object, node, or zone.

- **Selection Information**  
Information and settings for the currently selected object or node. The information in this panel can be quite diverse, such as zone data, occupancy information, and measurement distances.
- **Zone Management**  
A list of zones in the current model.
- **Material Assignment**  
Displays and assigns the primary and alternate material assignment of the selected object(s).
- **Display Settings**  
Tools for controlling what is displayed in the 3D model.
- **Visualization Settings**  
Visualization controls for the OpenGL hardware rendering engine.
- **Shadow Settings**  
Controls for displaying shadows and shading functions.
- **Analysis Grid**  
Controls for positioning and calculating the analysis grid.
- **Rays and Particles**  
Controls for spraying acoustic rays and particles within the model.
- **Scripts and Wizards**  
Quick access to scripts and user-created utilities as well as controls for positioning and creating simple parametric geometry.
- **Object Transformation**  
Controls for numerically transforming selected objects and nodes.
- **Export Manager**  
Quick access to model export options.

## Training Packages

Several training packages, including a product demonstration, are available to help you make the most of Ecotect Analysis. These can be found online at the Autodesk Ecotect Analysis product center at [www.autodesk.com/ecotect-analysis](http://www.autodesk.com/ecotect-analysis), in the Services and Support section.

# Accessing the Web Service Tools for Whole Building Analysis

Customers who purchase a Subscription to their Autodesk Ecotect Analysis license can access the Autodesk® Green Building Studio® web-based service for the duration of their Subscription term in order to conduct whole building energy, water, and carbon analysis. Using the Autodesk Green Building Studio technology, the web-based service provides a user-friendly front end to powerful building energy analysis software. All of the computationally intensive simulations are carried out on remote servers, and the results are provided to you in a web browser.

You will need to set up your web-service account as a separate process. For details, please refer to the *Getting Started with Green Building Studio* guide found in the Support section of the Autodesk Ecotect Analysis product center at [www.autodesk.com/ecotect-analysis](http://www.autodesk.com/ecotect-analysis)

Autodesk, Ecotect, and Green Building Studio are registered trademarks of Autodesk, Inc., and/or its subsidiaries and/or affiliates in the USA and/or other countries. All other brand names, product names, or trademarks belong to their respective holders. Autodesk reserves the right to alter product offerings and specifications at any time without notice, and is not responsible for typographical or graphical errors that may appear in this document.

© 2009 Autodesk, Inc. All rights reserved.

**Autodesk®**