

**Autodesk® Intent® 2011
Release Notes, build 4.0.129**

Product Release Date: May 1, 2010 This document last updated: April 19, 2010

For the very latest update of the Autodesk Intent software and any hot fixes or service packs, please visit the Intent product page here: <http://usa.autodesk.com/adsk/servlet/pc/index?id=8057864&siteID=123112>. Click on the Data & Downloads link and then on the Updates & Service Packs link.

Release Notes - Readme file Autodesk, Inc. This file contains information that became available since the release of Autodesk Intent 2011 that you will find useful while installing and using Intent. Please obtain the latest version of this document for the release it covers – it will be continually updated as new information comes to light.

This document is broken into four sections:

- Section 1: Installation
- Section 2: What is New in Intent 2011
- Section 3: Changes from Prior Releases
- Section 4: Known Issues

General Note on Naming

The Intent series of products (Professional, Runtime, and Server) were recently renamed from “Inventor Automation”. The name Intent was used until 2009, and has now been re-applied.

1 Installation

1.1 Compatibility

Intent 2011 is supported on the following operating systems:

- 32-Bit Windows XP
- 32-Bit Windows Vista
- 32-Bit Windows 7
- 64-Bit Windows XP
- 64-Bit Windows Vista
- 64-Bit Windows 7

Intent Server 2011, a new product, is only supported on 64-bit operating systems. In addition, it is supported on Windows Server 2008. Note that certain legacy features, such as the IntentUp translator utility, are only installed with the 32-bit installers of Intent.

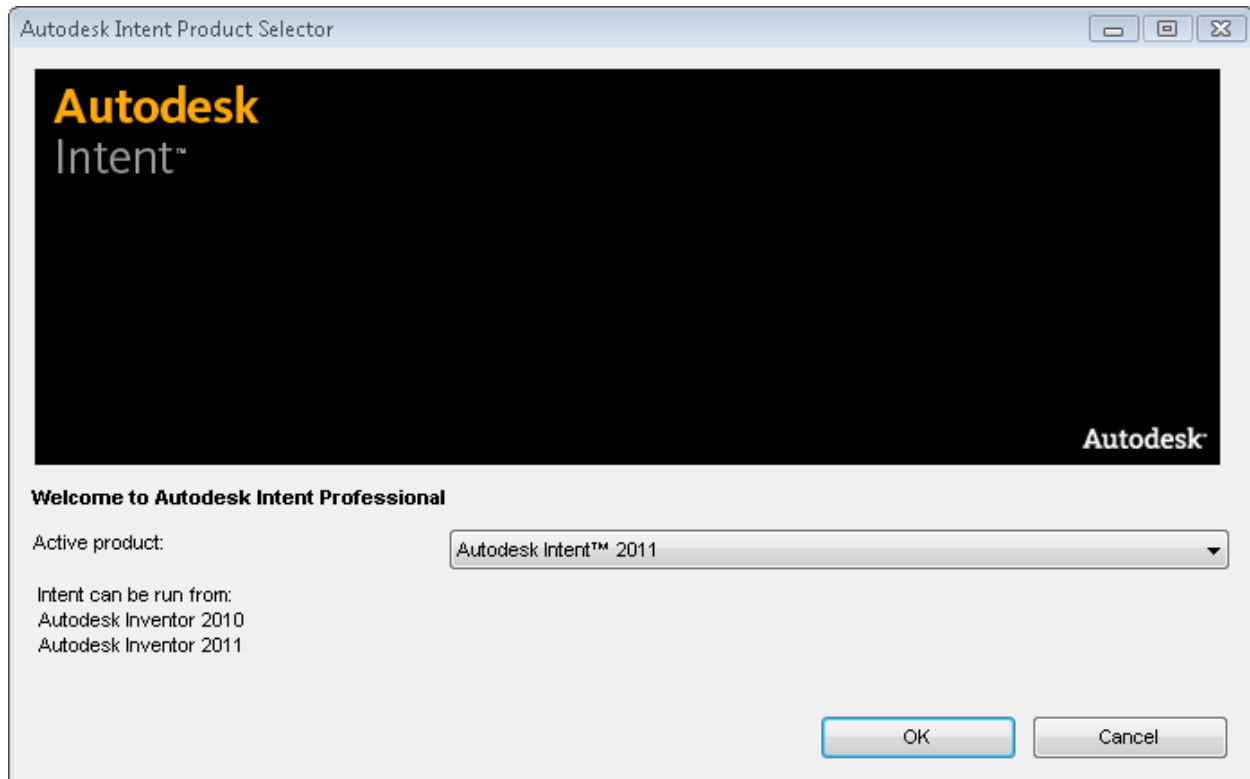
Intent 2011 does not require any CAD host to be installed. However, it will install bindings for the following hosts if they are present:

- Autodesk Inventor 2010
- Autodesk Inventor 2011
- AutoCAD 2011 (English and Japanese only)
- AutoCAD Mechanical 2011 (English and Japanese only)

1.2 Running Intent 2011

Intent 2011 is a major release. It can be installed simultaneously with prior major releases of Intent, although host bindings may need to be adjusted if it is desired to run Intent Professional 2011 with Inventor 2010. Minor or “Update” releases cannot be installed simultaneously.

If you need to switch between the 2010 and 2011 Intent releases when using Inventor, you can find an “Inventor Addin Settings” utility on the Windows Start Menu; see [Start]\Programs\Autodesk\Autodesk Intent Professional 2011\Inventor Addin Settings.



Select the active product and click on OK button. Be aware that this action will not change the references to the Intent assemblies in your custom projects, you will need to make the change manually and re-compile.

1.3 Installation Requirements

To install Intent 2011 you must have the appropriate self-extracting installer file for your platform (32 or 64 bit) and variant (Professional, Runtime, or Server). The file names are self-explanatory. Only one of these may be installed:

- Autodesk_Intent_Professional_2011_English_Win_32bit.exe
- Autodesk_Intent_Professional_2011_English_Win_64bit.exe
- Autodesk_Intent_Runtime_2011_English_Win_32bit.exe
- Autodesk_Intent_Runtime_2011_English_Win_32bit.exe
- Autodesk_Intent_Server_2011_English_Win_64bit.exe

1.4 Host Preference and Priority

The installer will install bindings for hosts as follows.

- If Inventor 2011 is present, it will be set to use Intent 2011.
- If Inventor 2010 is present, it will be set to use Intent 2011.
- If AutoCAD/US-English is present, it will be setup to run Intent 2011
- Else If AutoCAD Mech/ US-English is present, it will be setup to run Intent 2011
- Else If AutoCAD/Japanese is present, it will be setup to run Intent 2011
- Else If AutoCAD Mech/Japanese is present, it will be setup to run Intent 2011
- Else (no known autocad is present), the AutoCAD binding will not be installed.

Only one AutoCAD binding will be set no matter how different versions of AutoCAD are installed.

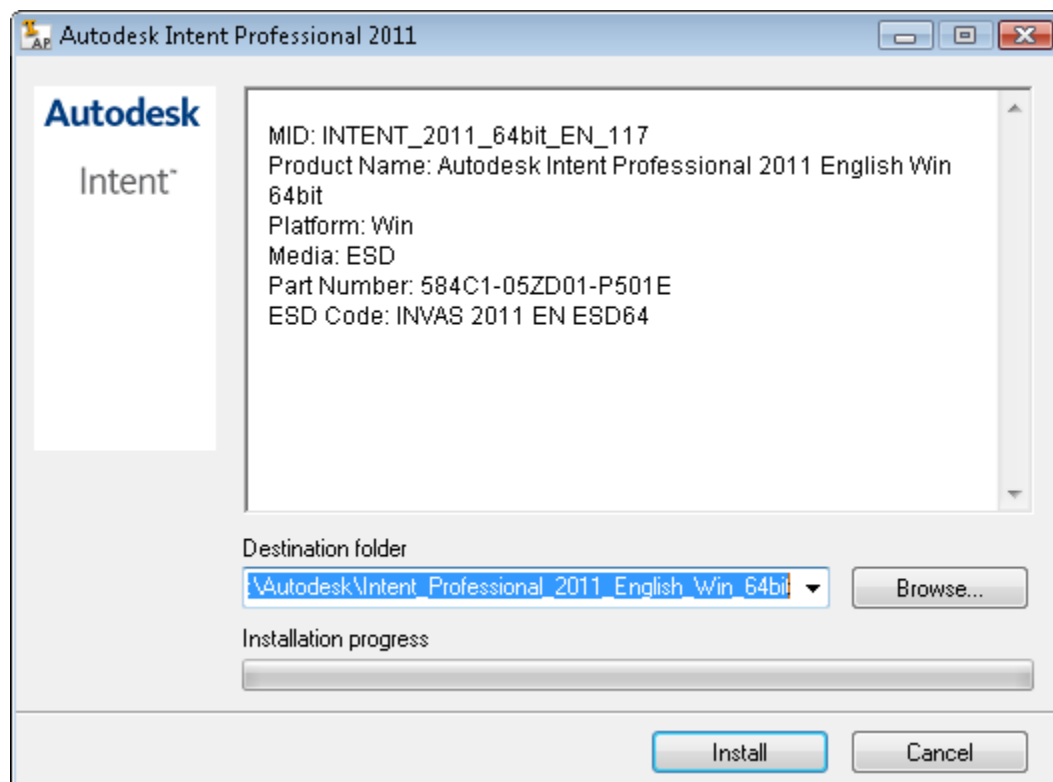
If none of the supported hosts are present, Intent 2010 will still install its core modules and the command line and UI versions of MinHost.exe, a simple application that can be used to evaluate rules which have no geometric modeling requirement. See the section on MinHost in *Introduction to Intent* for more details.

1.5 License Method Matching

Intent 2011 improves upon the license matching issues compared to prior releases. The only restriction is that an Intent network license is required if the host uses a network license. All other combinations should work. Note that this only applies to 2011 hosts; the license method does not need to match with Inventor 2010, since it uses an older licensing technology.

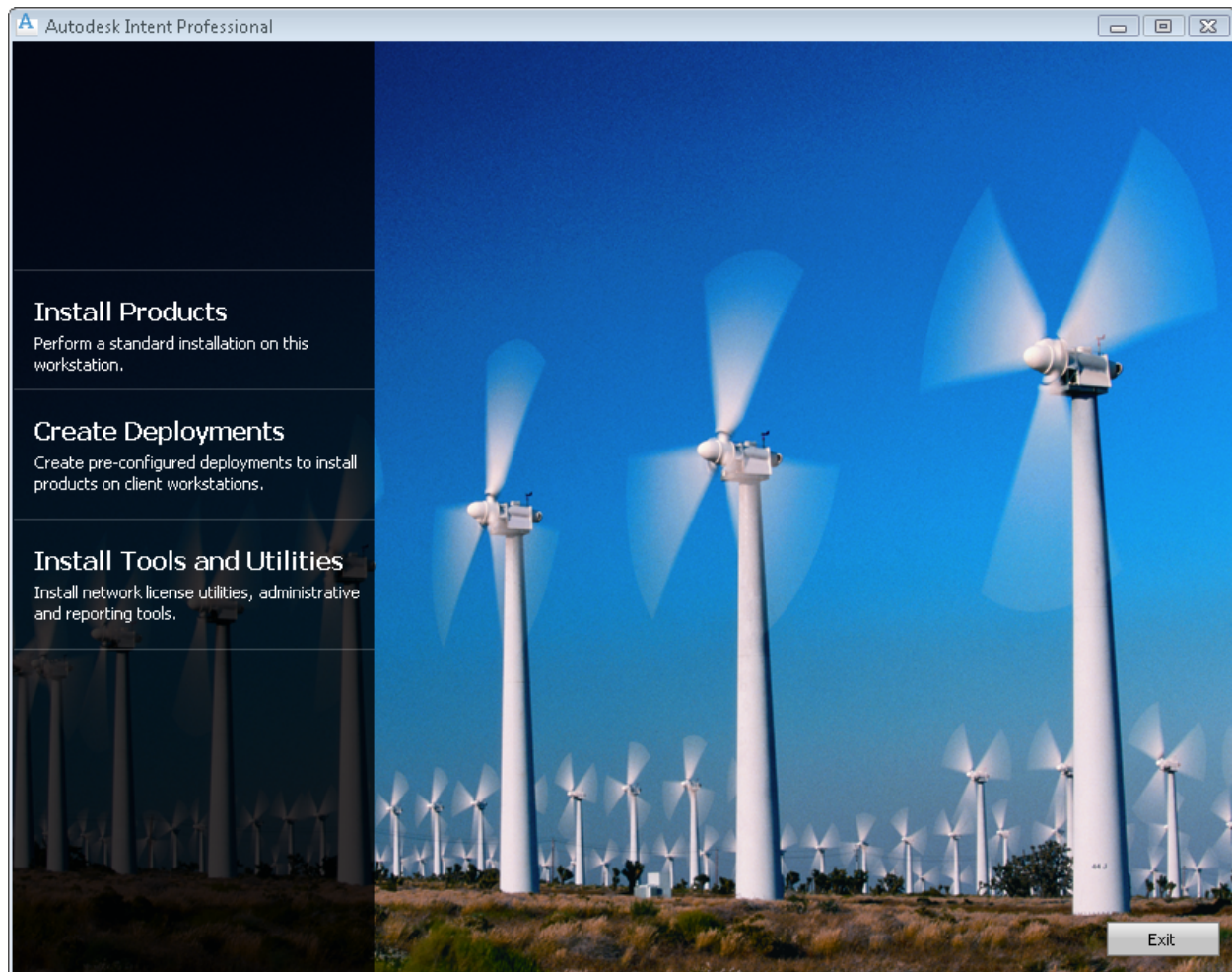
1.6 Installation Steps

To install Intent 2011, double-click on the self-extracting installer for your desired product and platform. The extraction dialog appears.



Click Install to proceed.

The Launch Dialog will appear:

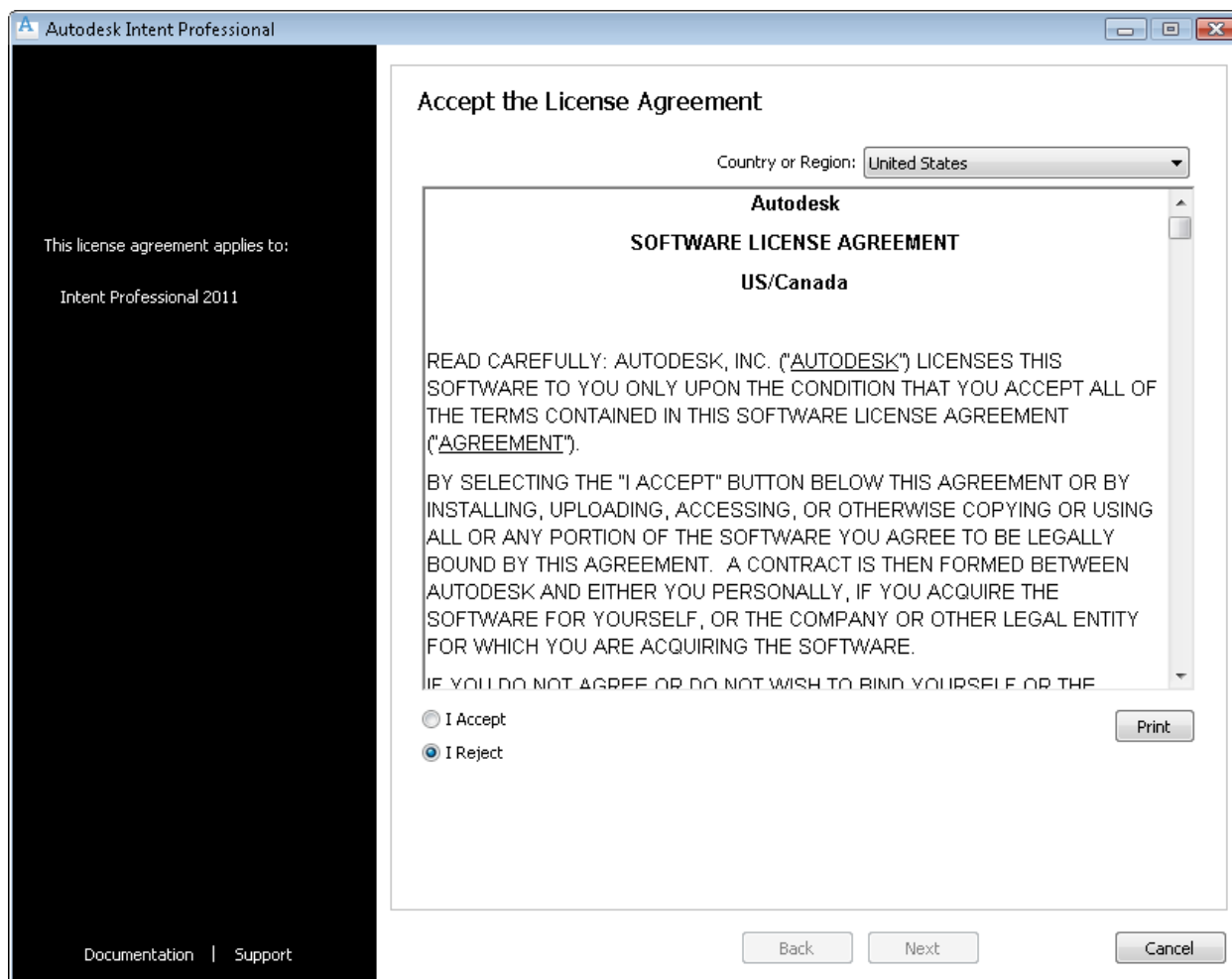


Select *Install Products* to proceed with installation.

Create Deployments is used when creating a "pre-packaged" installation that bundles many of the installation responses into a single file that gets placed on a server, where each client can download and install with much less interaction.

Install Tools and Utilities is used when installing the Autodesk Network License Manager on a license server machine.

The License Agreement dialog will appear:



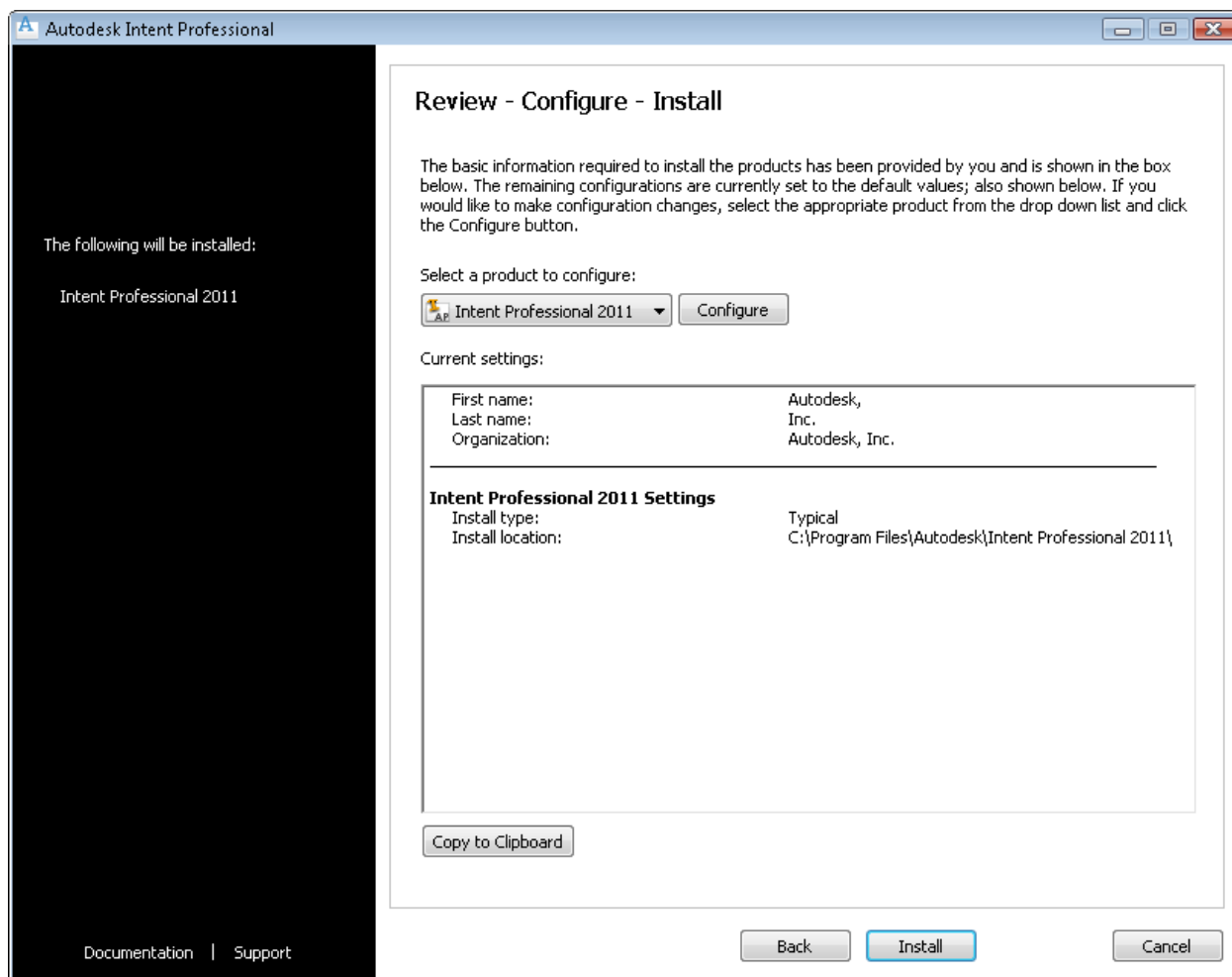
Select Accept and then Next.

The Product and User Information dialog will appear:

The screenshot shows a window titled "Autodesk Intent Professional" with a dark sidebar on the left and a main content area on the right. The sidebar contains the text: "The information you enter here is permanent; it is available in the About box under the help menu item within the product." and links for "Documentation | Support". The main content area is titled "Product and User Information" and contains several input fields: "Serial number*" (two boxes separated by a hyphen), "Product key:" (one box), "First name:" (one box with "Autodesk,"), "Last name:" (one box with "Inc."), and "Organization:" (one box with "Autodesk, Inc."). At the bottom of the main area, there is a note: "Please note that all data gathered during product activation is used in accordance with the Autodesk [Privacy Policy](#)". At the bottom of the window, there are three buttons: "Back", "Next", and "Cancel".

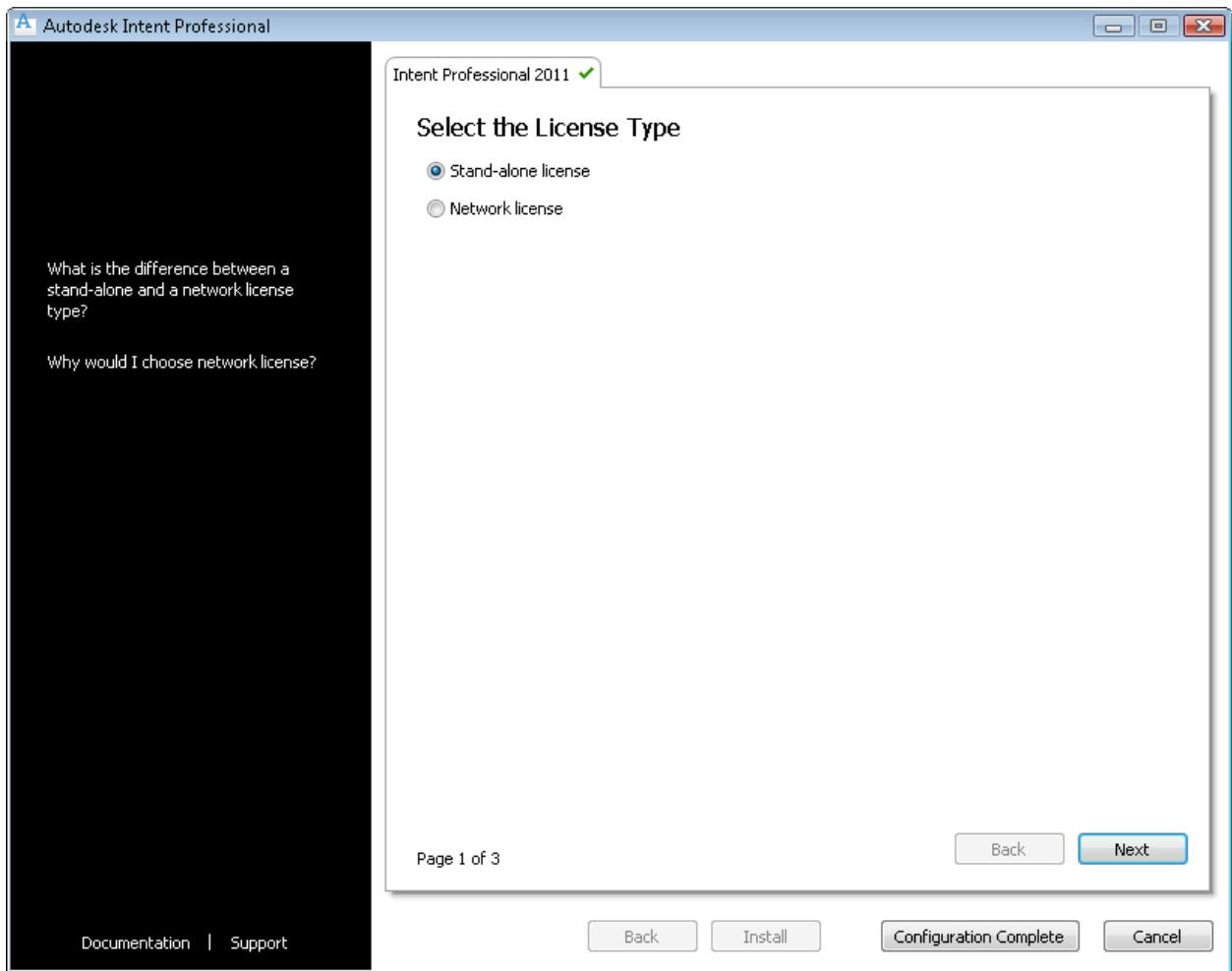
Enter your serial number and product key, and correct the name and organization if the defaults are incorrect. When everything is correct, select Next.

The Review / Configure dialog will then appear.

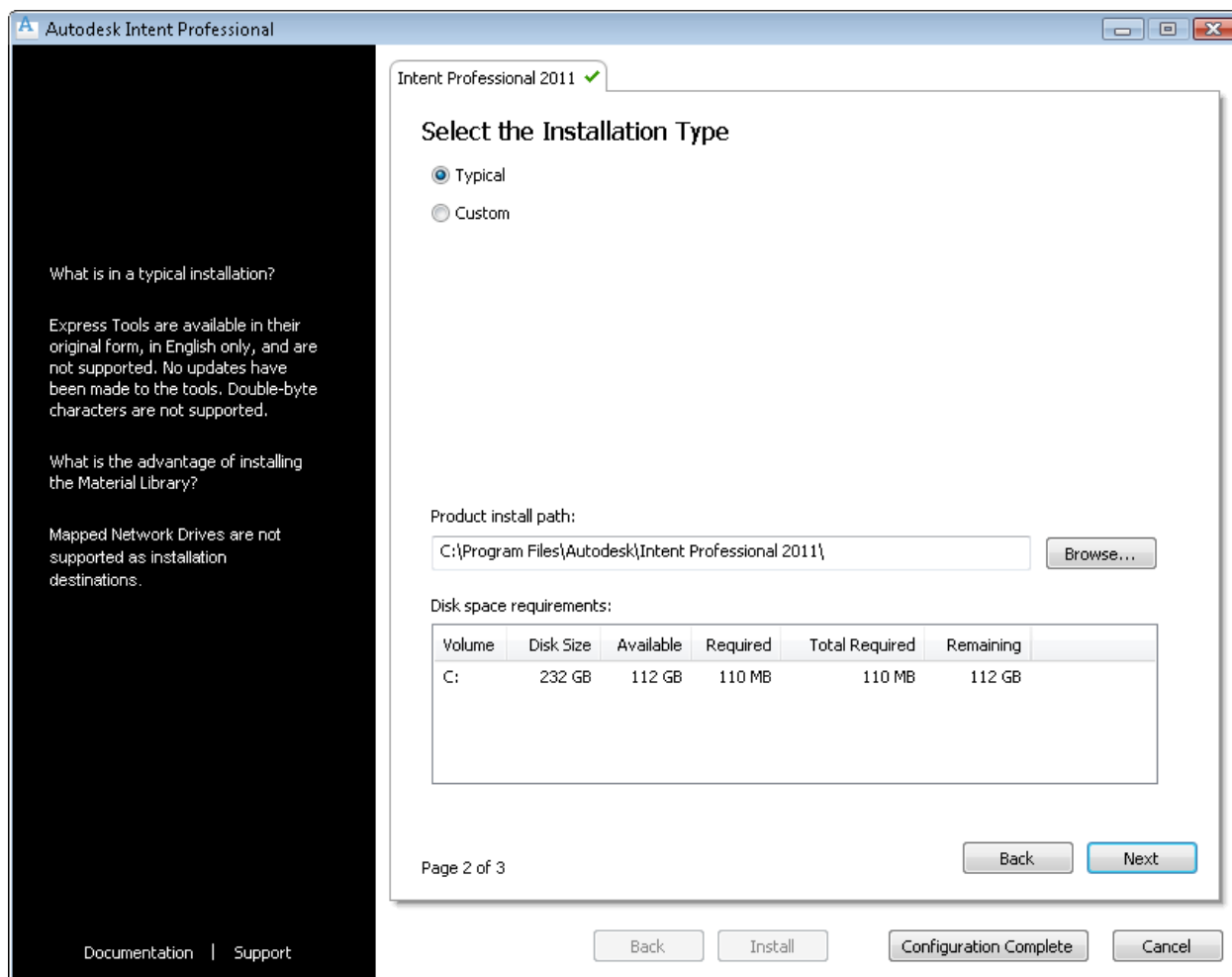


IMPORTANT: If you are installing a Network license of Intent, you *must* select the Configure button here. If you are installing a stand-alone license, you can just select Install.

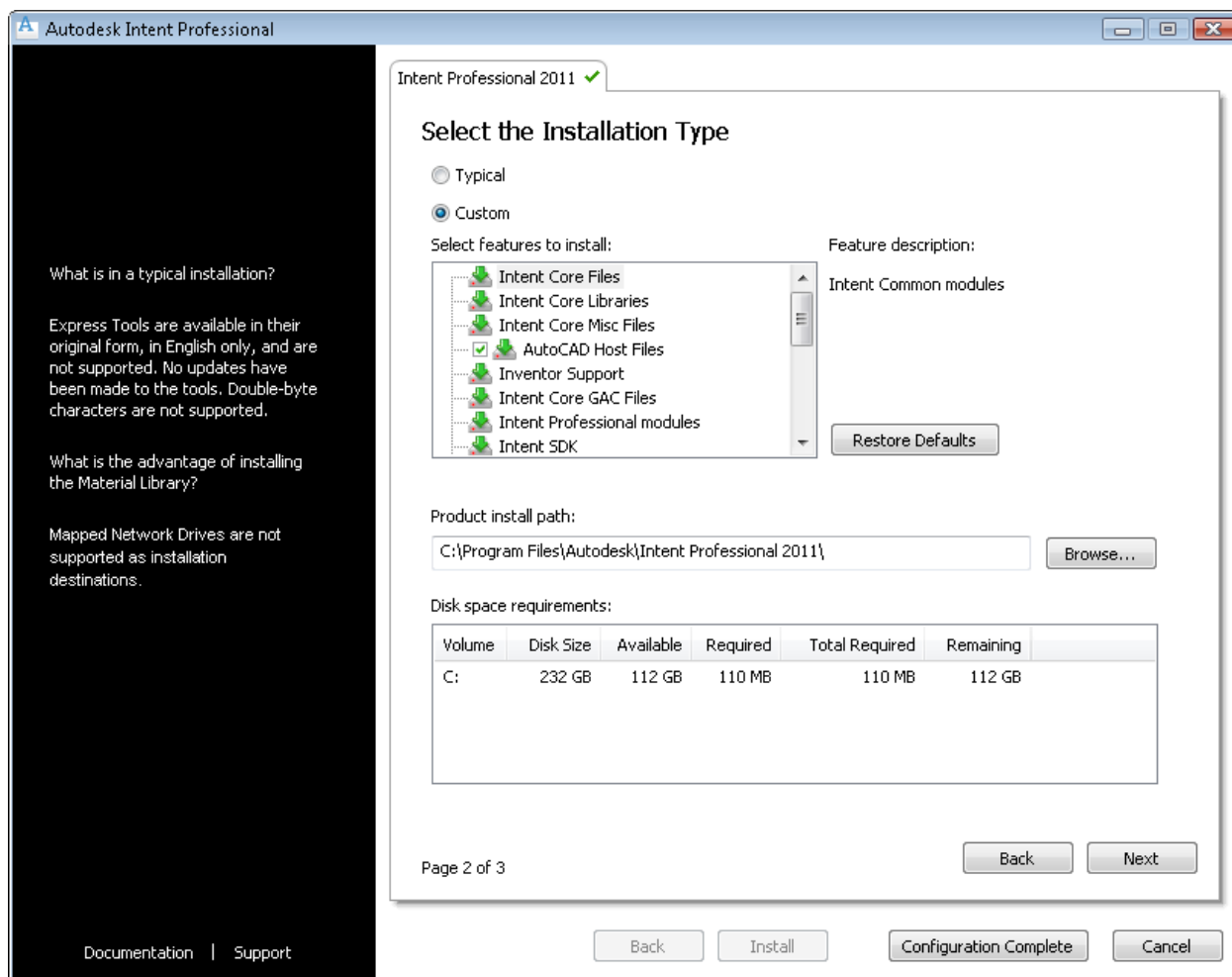
If you select Configure, you will be presented a series of dialogs for configuration. The first is the license type:



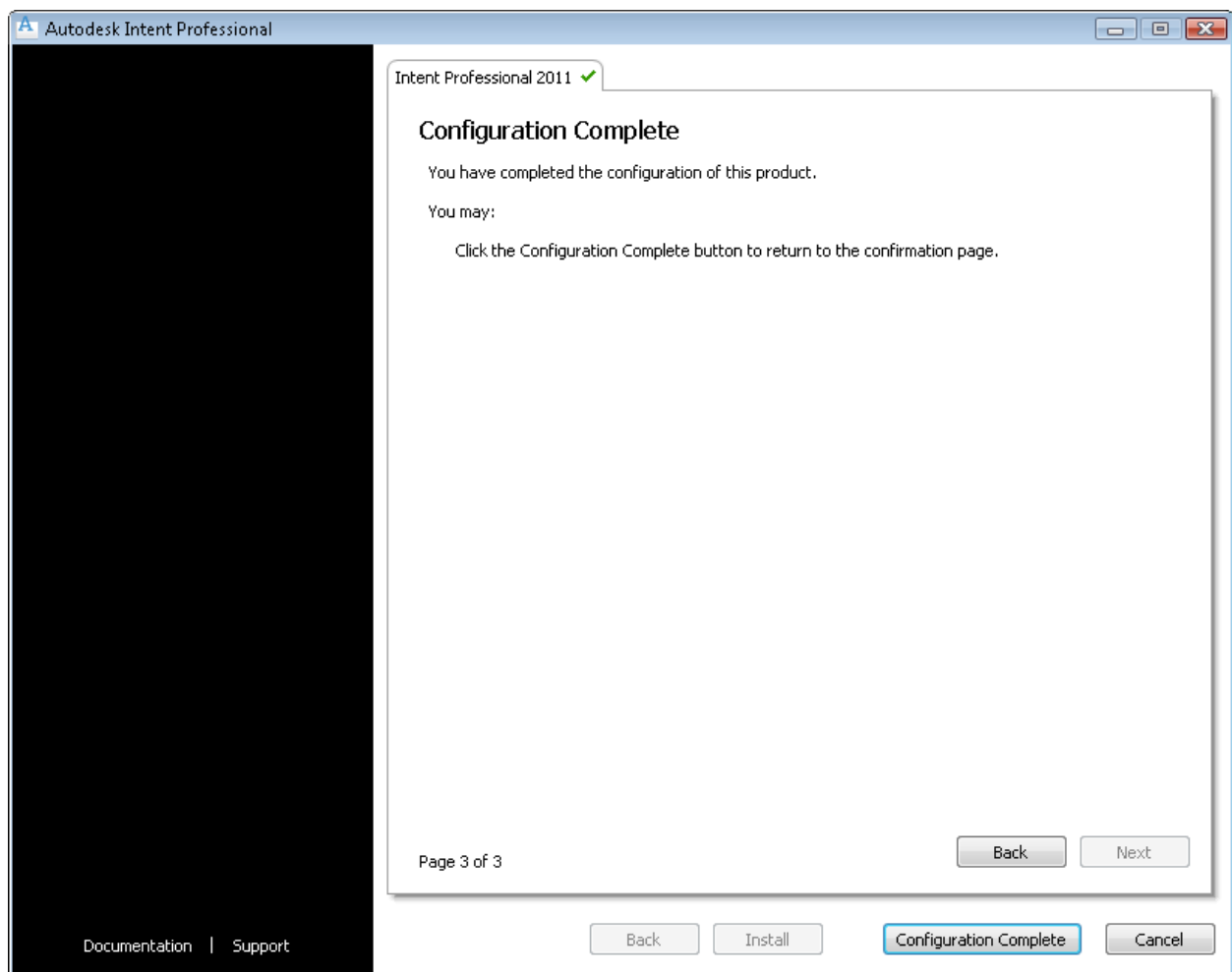
After making your selection, click on Next. The Installation Type screen appears:



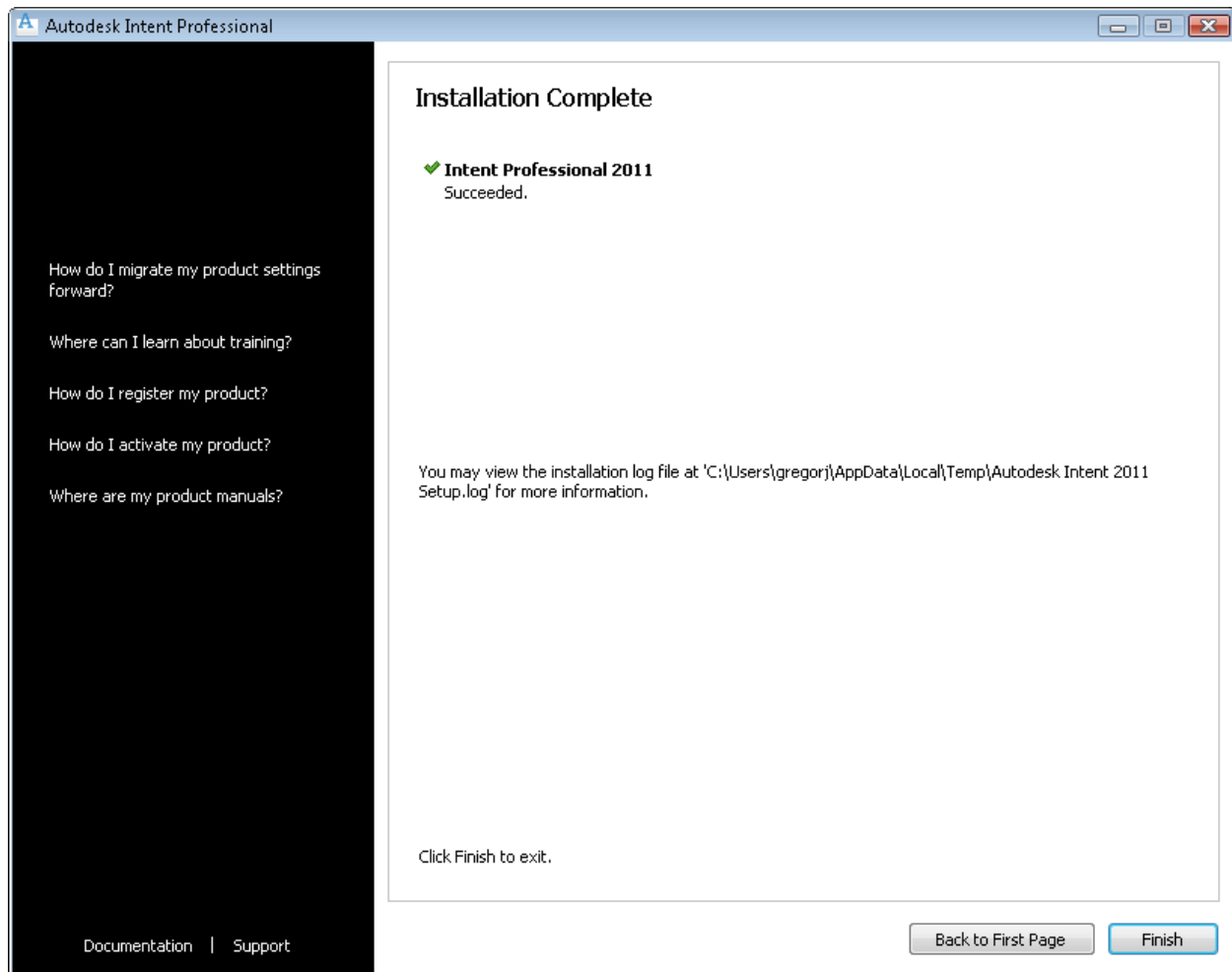
If Custom is selected, you will be presented with a feature list:



However, only a few of these are optional (with check boxes), so it is recommended to use a Typical installation. The final Configuration screen is merely a confirmation:



Select Configuration Complete to return to the Review - Configure - Install dialog, and select Install. At this time, the actual installation starts. It should only take a few moments. When it is complete, the final screen appears:



Select Finish to complete the installation.

2 What is New in Intent 2011

Intent 2010 is a new full release, and contains several new features, as well as defect fixes.

2.1 Intent Server

Intent 2010 is delivered in three variants. The Professional variant provides full rule authoring capability. The Runtime variant allows deployed applications to have smaller installation footprints, restricted rule viewing, editing, and manipulation options, and a lower cost. The Server variant allows batch processing of rule sets in an Intent+Inventor modeling environment. Intent Server runs a self-contained version of Inventor with no user interface. It also has a restricted library to match the reduced capabilities of the internal Inventor engine. Most significantly of these is the lack of drawing or viewing capabilities.

3 Changes

4 Known Issues

A few issues have come to light which could not be rectified before release. These issues are listed in this section.

4.1 AutoCAD Viewports

There are known issues with the Viewport design. When a Viewport created by Automation is saved in a drawing, it is not properly marked as “owned” by Automation, and this causes it to be not updated when the drawing is subsequently re-opened. This causes a series of issues, including:

- Duplicated viewports. Automation creates a new Viewport directly over the saved one. This is not easily detectable.
- “Confusion” between viewports. AutoCAD sometimes seems to not correctly place geometry into duplicated viewports.

Possible workarounds:

- Don’t use Viewports.
- Don’t save drawings with Viewports created by AutoCAD. Instead, plot directly, write DWF files, or otherwise use the drawing without saving.
- Delete all viewports or layouts when a drawing is opened. This is only viable if you are only using Automation-created viewports.

This issue is being actively addressed, and should be corrected in a future release.

4.2 IntentUp is Limited to 32-Bit

IntentUp will only run on a 32-Bit system. This restriction will not be lifted, because the conversion process relies on 32-bit only legacy compiler code.

4.3 AutoCAD Ribbon support is turned off by default

Intent’s additions to the AutoCAD ribbon panel are off by default. This means that there is no ribbon panel access to a new install of Intent on AutoCAD. The following command-line commands can be used to access Intent functionality on AutoCAD:

HINT_ABOUTBOX	Puts up Intent About box
HINT_DESIGNEDITOR	Puts up Design Editor
HINT_MODELBROWSERON	Puts up Model Browser Pane
HINT_MODELBROWSETOGGLE	Toggles Model Browser Pane
HINT_MODELBROWSEOFF	Takes down Model Browser Pane

HINT_DUMPREC	Appears to dump IKM file contents, not sure about binary
HINT_HELP	Puts up Intent Help document
HINT_INITIALIZE	Initializes Intent
HINT_RIBBON	Turns on Ribbon changes
HINT_STARTUP	Called at startup (by acad.lsp) to initialize UI. Does not initialize Intent. Loads the Autodesk.Intent.AutoCAD.Addin.dll into the current process.
HINT_UPDATESTOGGLE	Toggles automatic updates
HINT_UPDATESON	Enables automatic updates
HINT_UPDATESOFF	Disables automatic updates
HINT_OPENIKP	Puts up File Dialog set to *.ikp

4.4 Installation Issues

4.4.1 Installation Links do not work

The Documentation and Support links at the bottom of the installer windows do not connect to the proper content. In some cases, they refer to AutoCAD content. This problem is due to missing files. It will be corrected in a future release.