

Autodesk® Topobase Client 2010 Update 3 Readme

Thank you for downloading Autodesk Topobase Client 2010 Update 3.

This readme contains the latest information regarding the installation and use of this update. It is strongly recommended that you read this entire document before you apply the update to your product. For reference, you should save this readme to your hard drive or print a copy.

Contents

- [Who Should Install This Update?](#)
- [Supported Operating Systems](#)
- [Installation Instructions](#)
 - [To Install This Update](#)
 - [To Update the Topobase System User TBSYS](#)
 - [To Update the Document Structure](#)
- [Topobase Client 2010 Update 3 Information](#)
 - [Action Required](#)
 - [General Information](#)
 - [Known Issues with This Update](#)
- [Primary Issues Resolved by This Update](#)
 - [Issues Resolved by This Update](#)
 - [Issues Resolved for Autodesk Topobase 2010 Update 2](#)
 - [Issues Resolved for Autodesk Topobase 2010 Update 1](#)
 - [Issues Resolved for AutoCAD 2010 and AutoCAD Map 3D 2010 Update 2 and Update 1](#)

Who Should Install This Update?

Update 3 is for the Autodesk Topobase Client 2010 and Autodesk Topobase Administrator 2010 components, including all official release versions, in all languages, running on all supported operating systems.

[Return to Top](#)

Supported Operating Systems

This update can be used with the following:

- Service Pack 2 (SP2) and Service Pack 3 (SP3) of the following operating system:
 - Microsoft Windows XP Professional Edition
- The following operating systems and Service Pack 1 (SP1) of the following operating systems:
 - Microsoft Windows Vista® Enterprise
 - Microsoft Windows Vista Business
 - Microsoft Windows Vista Ultimate

[Return to Top](#)

Installation Instructions

- [To Install This Update](#)
- [To Update the Topobase System User TBSYS](#)
- [To Update the Document Structure](#)

To Install This Update

Follow these instructions to install this update on a single computer.

1. From the Product Support web site, download the update files: TopobaseAdmin2010SP3.exe and TopobaseClient2010SP3.exe.
2. Copy the Topobase Client 2010 Update 3 files to a temporary folder on your computer.
3. Install the Update 3 files for Client and/or Administrator on each workstation, supporting all official release versions.

[Return to Top](#)

To Update the Topobase System User TBSYS

1. On any updated Client workstation start the Topobase Server Administrator. Click Start > Programs > Autodesk > Autodesk Topobase 2010 > Autodesk Topobase Server Administrator 2010.
2. Login as Oracle user with rights on SYS.DBMS_RLS and DBA rights (default "SYS AS SYSDBA"). Service name (SID) default is ORCL.

3. In the Topobase Server Administrator, in the Topobase System User section, click Detailed Settings.
4. Under Topobase System User Info, a red value indicates that the Topobase Server Version is not up to date.
5. Under Topobase System User, click Update.
6. Select the topobase.jar file from the \TBSYS folder and click Open.

After the update the log file (\log\Topobase.ServerAdministrator.txt) is shown.

For more information, see the Topobase Installation and Configuration Guide.

[Return to Top](#)

To Update the Document Structure

1. You can update the document structure from any workstation. Start Topobase Administrator.
2. Open each workspace.
3. When prompted to update the document structure, click Yes.

Although the Topobase document structure is updated automatically when a user logs in, we recommend that the administrator perform this operation manually.

[Return to Top](#)

Topobase Client 2010 Update 3 Information

Action Required

After the installation of Update 3, you must manually update the Topobase System User (TBSYS) using Topobase Server Administrator.

Topobase server and Client versions must match. That means:

- If you have updated Topobase System User (TBSYS) you must update all Client workstations.
- If you have updated a Client workstation you must update the Topobase System User (TBSYS).

General Information

The Topobase Client 2010 Update 3 contains updates for the following components:

- Topobase Administrator
- Topobase Client
- Topobase Wastewater
- Topobase Electric

Additional updates are available for Topobase Web.

After you install Topobase Client Update 3, the following server side update is ready to be performed:

1. Update of the Topobase System User (TBSYS) using Topobase Server Administrator. This operation loads Topobase.jar.

During the TBSYS update you must connect to the Oracle database. Make sure your administrator provides the password for the Oracle user with rights on SYS.DBMS_RLS and DBA rights (default "SYS AS SYSDBA").

Known Issues with This Update

The following are known issues in Autodesk Topobase Client 2010:

Known Issue: Exporting big amounts of data to DWG (using the TExportDWG command) may cause performance issues or the system to run out of memory.

Known Issue: When working with metric settings, hatches exported to DWG (using the TExportDWG command) can be wrongly scaled.

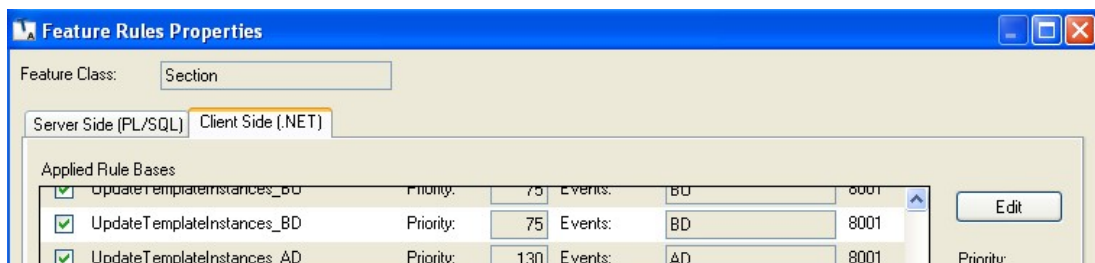
Workaround: If you experience this behaviour, type the command _MEASUREMENT in the AutoCAD command line. You should find a value of 1 (metric). Change the value to 0 (imperial) and repeat the export to DWG operation. Once the export is done, set the value for MEASUREMENT back to 1.

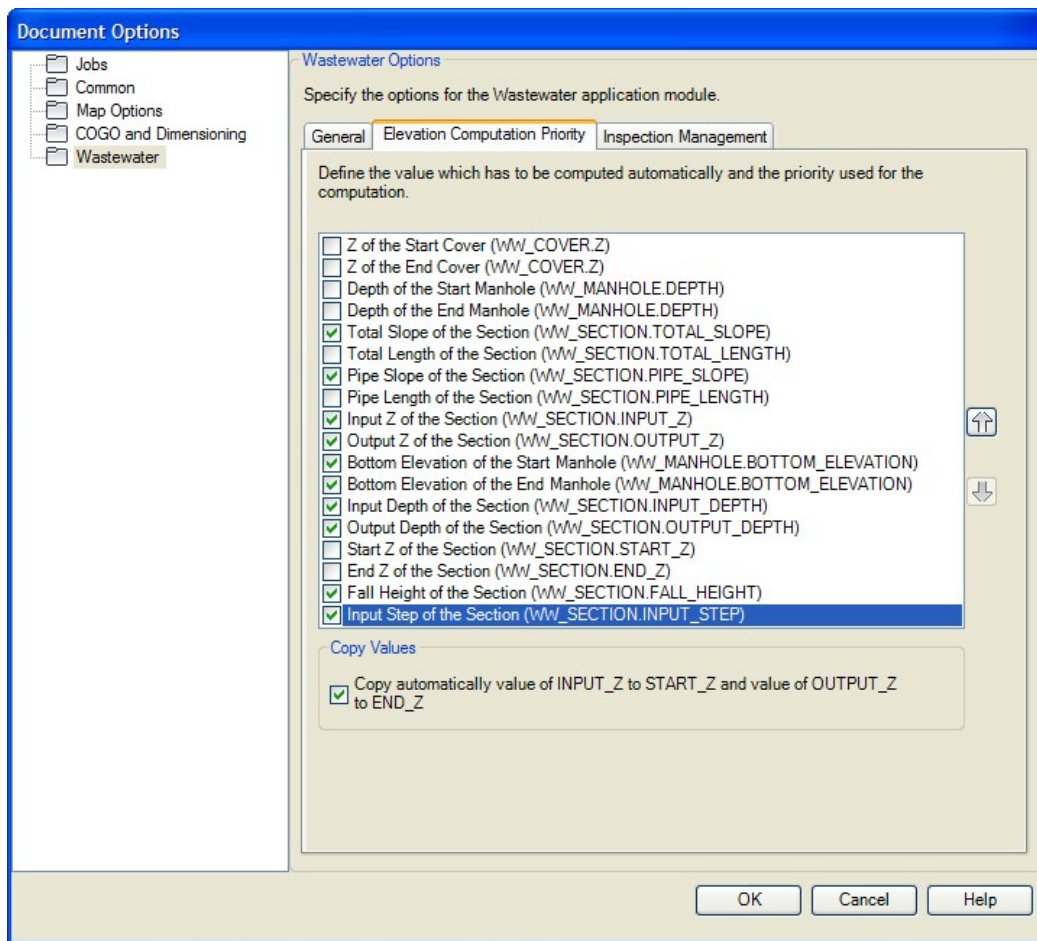
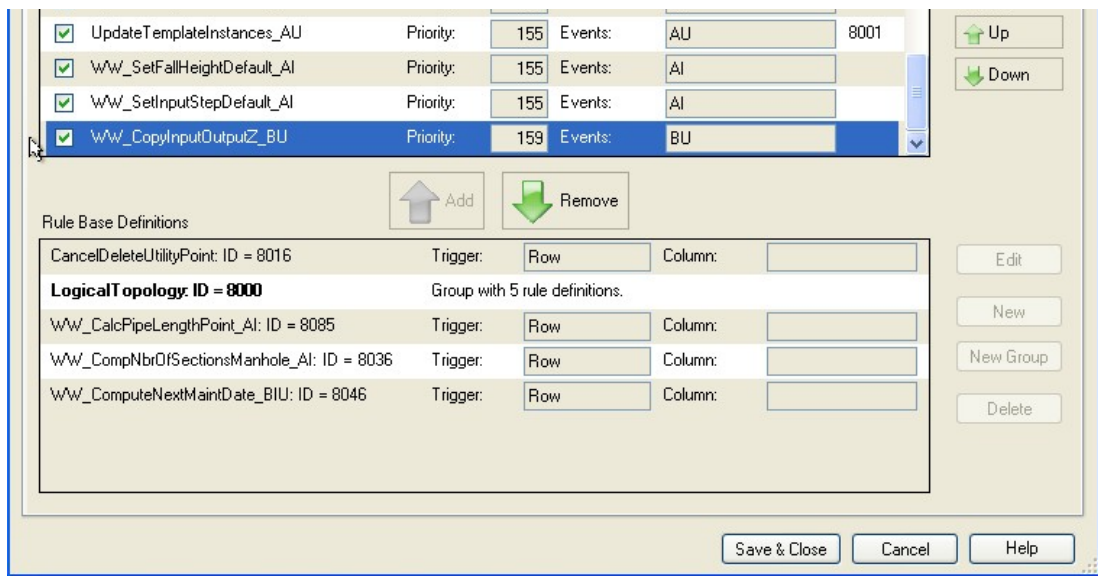
NOTE: The value for MEASUREMENT is saved inside the drawing. If you export several drawings to DWG in a row, the value needs to be changed for each single drawing.

Known Issue: With Topobase four instances of the teigercity.ecw raster image will be placed on your hard disk. One is 255 MB in size. You may delete three or all copies of the raster image to free up hard disk space. The image can be found in the following folders by default:

C:\Program Files\Autodesk Topobase Client 2010\Template\Modules\Land\Raster
 C:\Program Files\Autodesk Topobase Client 2010\Template\Modules\Land_CH\Raster
 C:\Program Files\Autodesk Topobase Administrator 2010\Template\Modules\Land\Raster
 C:\Program Files\Autodesk Topobase Administrator 2010\Template\Modules\Land_CH\Raster.

Known Issue: The configuration of the WW calculation has to follow specific rules: move the section feature rule "WW_CopyInputOutputZ_BU" at the end of the execution list in Admin, set the Elevation computation priority in Document Options in Client, as below:





[Return to Top](#)

Primary Issues Resolved by This Update

Issues Resolved by This Update

This update includes the resolution of the following issues:

Topobase Administrator

Logical Topology

- Initializing topology with a larger data set in SP2 causes Topobase to fail unexpectedly, will now run successfully.

TB2TB

- The gather schema statistics can now be disabled via API at the end of the import. A new public property of the MigrationManager class is created. This is to reduce the time of the migration process.
- Oracle Data Import now no longer crashes if the source database is not TB document.

Other

- Creating a feature class from a view with an unsupported name will now no longer cause the program to fail unexpectedly.

Topobase Client

Construct

- Add and remove points from an invalid polygon with `Validate Geometry` rule applied on the feature class, will now no longer cause the program to fail unexpectedly.

Display Model

- Saving display model is improved and no longer causes the program to fail unexpectedly, when e.g. the repository's ".disasterrecovery" folder isn't accessible.
- Handle the `OutOfMemoryException` in `DisplayModelXmlObject.SerializeDefinition`, a wrong `<ResourceId>` in the `TBDMMAP` file will no longer cause the program to fail unexpectedly.

Export to DWG (TBEXPORTDWG)

- Special pattern name which starts with "Ar-" or "ACAD_ISO" was used to be exported as Solid, Now export the enhanced Polygon fill pattern well.
- The custom enhanced line type (e.g. Which was defined in *.layer file) is exported as `ByLayer` now
- Scale of Polygon pattern, line scale, line width, line color, size and color of block references can be exported well now.
- Support the composite line styles and multiple fill patterns export
- Export enhanced layer with following settings no longer causes the program to fail unexpectedly: Pick out the fill symbol definition and export them as fill pattern, ignore the border symbol when export polygon, Adjust the scale of some linetype to match AutoCAD line type definition, multiple enhanced style export.

Generate Graphic

- `MgException` in `Topobase.Display.GraphicsGeneration.CurrentMap` is handled now
- Exception of attempted to read or write protected memory is handled in `Topobase.Map.Gws.GwsReport`, `Generate graphic` no longer causes the program to fail unexpectedly
- `System.Exception` is handled in `FeatureSourceManager.ConfigureRasterFeatureSource`.
- Handle `UnauthorizedAccessException` on `Generate graphic`, to no longer causes the program to fail unexpectedly.

Map Integration

- Handle `System.ArgumentOutOfRangeException` in `Topobase.Map.MapServices.ModificationService.GwsDbLabelUpdater` and `Topobase.Map.MapServices.ModificationService.GwsDbPointUpdater`.
- When there is a generated graphic drawing and a new map open, closing drawings no longer causes the program to fail

Logical Topology

- Handle `NullReferenceException` in `Topobase.LogicalTopology.OnlineMode.TopologyTransaction.GetSpatialFeature` and no longer causes the program to fail unexpectedly.

Forms

- When a generic form text box (e.g. of the document manager) tries to determine whether the selected file is stored on a CD-ROM, a warning is given if the path was invalid and no longer causes the program to fail unexpectedly.

Other

- Publishing to DWF point features are not merged into groups now.
- `Topobase` will no longer crash when the connection to Oracle will be lost during the setting of a job on the graphic (FDO connection on the Map side).
- Modification of geometries is now more stable and will not fail so often anymore.
- `TB Client` will no longer crash when change the Swiss specific maintenance job status.
- `Interlis Export` now supports special characters like (ä, ö, and ü).

Plot

- Handle the out of memory exception when regenerate graphic for Map placeholder to capture map in LMCH.
- Digitize Plot child feature no longer causes the program to fail unexpectedly.
- Batch plot in `TB Plot` module no longer causes the program to fail unexpectedly.

Topobase Electric

- Orientation of the cross section is not changed now when split a segment.
- Opening the `EL_BUS_BAR` form of NA electric model crashes `TB Admin` or `TB Client`.
- Moving a duct out of a containing duct to a snap point on cross section no longer causes the program to fail unexpectedly.

API

- Handle the specific java exception 942 and show a proper message.
- Handle the null references exception in `Topobase.Data.FidTidArray`.
- Adding a context menu entry to a feature class (programmatically) will now show this in the context menu

Topobase Wastewater

Analysis Workflow

- Analysis Workflows, e.g. Find Connected, Load Transfer and Circuit/Flow Reconfig, works well now after implement workaround in `Devart.Data.Oracle.dll`.
- Hard split a section, the section's observations is not delete now, the relation between the created sections and the observation can be setup.

- If two line segments of a section will be merged, the attributes of the section feature will now be calculated from the merged line segments.
- The reverse operation of a section will now re-calculate all necessary attributes of the section

Import/Export

- At Import page2, FID location shows the custom configured value now.
- Manhole depth recalculate now when using "connect point to cover".
- Select feature from trace to export results in crash. With the correct entries in TB_Relations (no direct relations which are already defined by the topology) the tracing forward or backward will not cause the program to fail unexpectedly anymore.

Inspection

- Playing video for section with only inspection but no observation won't result in crash now

[Return to Top](#)

Issues Resolved for Autodesk Topobase Client 2010 Update 2

This update includes the resolution of the following issues:

Topobase Administrator

Form Designer

- The context menu now works as expected.

Schema Conversion

- Converting Munsys oracle data to Topobase schema no longer causes the program to fail unexpectedly. The converter failed to convert parent tables of invalid foreign keys.

Workaround: You can recreate previously dropped foreign keys: Ignore constraint related errors ORA-02290 to ORA-02299. Conversion of such tables continues and you cannot recreate the (invalid) foreign key. This issue is logged in the TB_CONVERTER log column and then displayed in the Detail section of the converter UI.

Topobase Client

Dimensioning

- The Dimension feature is now saved in the dimension feature class specified in the document options, even if you do not select a dimension feature class in the explorer tree.

Display Model

- The frame fill now extends to cover the full label name.
- When you save a display model, Athlon X2 no longer causes the program to display an error message and fail unexpectedly.

Export to DWG (TBEXPORTDWG)

- Exporting to a map no longer causes the program to fail unexpectedly.
- The performance time is improved when you add enhanced layers and symbols to your map.
- Exporting a large amount of data no longer causes the program to fail unexpectedly.
- Exported points are oriented correctly and the XDATA rotation value is filled.
- All exported features are now saved.
- Exporting symbols with an attached display model no longer causes the program to fail unexpectedly.
- Exporting to Topobase Client using the DFK display model no longer causes the program to fail unexpectedly.

Jobs

- On the Form toolbar, the Enable/Disable status now updates according to job selection.
- Improved exception handling for unexpected Oracle errors on repair of job configuration.

Installation

- If you do not have .Net 3.5 SP1 installed, opening a workspace in Topobase Client no longer causes the program to fail unexpectedly.
- Installing Topobase Client Update 1 and 2 now displays localized messages as expected.
- Topobase components in the Add or Remove Programs window are now named Version 3.
- When you install Topobase Client 2010 Update 3 on top of Topobase Client 2010 Update 1, the correct files and version are now loaded.

Interlis Import

- Performing an Oracle Data Import no longer causes the program to fail unexpectedly.
- A second Model is no longer incorrectly exported to an ITF-file.

Map Integration

- If the feature source for a layer is not found, FeatureInfo no longer fails unexpectedly.
- Zooming and panning around a map with WMS-Layers no longer causes the program to fail unexpectedly.

Oracle

- Digitizing a feature class from a view no longer causes the program to fail unexpectedly.

Other

- Stability of the Redland.NET library has been improved.

Topobase Electric CE

Feature Rules

- When you add a structure point to an existing segment with ducts and conductors, the program now returns a result quickly.

Topobase Wastewater

Import/Export

- Exporting to an ISYBAUXML file no longer causes the program to fail unexpectedly.
- You can now easily change observation codes in the Data Validation dialog box.
- You can now create your own domain entries when you export a feature with a ISYBAU 1996 file.
- Exporting to a ISYBAU file no longer causes the program to become unresponsive.
- Importing an ISYBAU 96 file to a French system no longer causes the program to fail unexpectedly.

[Return to Top](#)

Issues Resolved for Autodesk Topobase Client 2010 Update 1

This update includes the resolution of the following issues:

Topobase Administrator

Topology

- Area topology checker now handles all topologies with arcs as expected.
- Area topologies that use filter expressions are now updated as expected.
- Initializing topologies with the option "Create Logfile Of Topology Errors" enabled now works as expected.

Other

- Creating a schema line feature class with a long name no longer causes the program to fail unexpectedly.

Topobase Client

Display Model

- Saving a Display model that uses a block from a file that is no longer available no longer causes the program to fail unexpectedly.
- Saving a Display model that has invalid settings no longer causes the program to fail unexpectedly.
- Invalid layer files no longer cause the program to fail unexpectedly.

Export to DWG (TBEXPORTDWG)

- Polygon fill pattern is now saved.
- Exporting labels where the stylization properties have been changed no longer causes the program to fail unexpectedly.
- Exporting point layers with symbols from external DWGs no longer causes the program to fail unexpectedly. Note that the export might take some time.
- Exporting multiple layers of the same feature class now works as expected.

Interlis Import

- Vertical alignment values, special characters (ä, ö, ü), and labels with long names are now imported as expected.

Intersection

- Intersections that are performed when the job state changes now work as expected.
- Intersections of features with arc geometry now work as expected.
- Intersection on specific circumstances with data (2 points are equal on the result of the intersection) no longer causes the program to fail unexpectedly.

Other

- Highlighting of features on layers that use views now works as expected.
- Highlighting of selected features that have a schematic representation now works as expected.
- Refreshing graphics after updating features from feature classes where the parent column is not the primary key no longer closes the program unexpectedly.
- COGO - Inserting a point into a line where the points before and after the insertion point belong to different feature classes now works as expected.
- COGO - Inserting multiple points into a line now works as expected.
- Editing centroids of an area topology that use filter expressions now works as expected.
- Saving the current map to DWG now works as expected.
- Editing features on autoload layers with some OSNAP options now works as expected.
- Stability of the Redland.NET library has been improved.

Plot

- Editing features in a DWG that has been created by Topobase Plot now works as expected.
- Using plot templates with the Plot To File Settings enabled now works as expected for batch plots, if you specify a single printer.
NOTE: In TB_SETTINGS, use the variable (ITEMTHEMA=TOPOBASE.PLOT, ITEMKEY=FORCEPLOTTOFILE, ITEMVALE=0/1), if you want to specify a batch PDF printer that is different from the PDF printer for the single plot, but want to use the output file name from the single plot.

Topobase Electric

- Find Fed Devices for transformers now works as expected.
- Find Connected workflow with the option "Always Display Highlighted Features" no longer causes the program to fail unexpectedly.
- A duct in a scaled cross section now has the same scale as the segment cross section.
- Creation of conductors in cross sections of different types now works as expected.
- Using COGO tools to split or to join a conductor no longer causes the program to fail unexpectedly.

Topobase Survey

- In the Wizard, step 7, updating the A-Priori Standard deviation now works as expected.
- The Result dialog displays the NB, NA values as expected.

Topobase Wastewater

Classification

- ISYBAU 2006 classification now handles invalid observation codes as expected.

Import/Export

- EN 13508-2 data validation now differentiates control codes for manholes and sections.
- When you close the Import dialog during the import, you must not close the dialog again, while the data is rolled back. A message alerts you "The window will be closed after data is rolled back. It may take a few minutes."
- Material values from ISYBAU 96/01 files are now imported correctly.
- Site observations, and site features are now imported correctly.
- Import can now be started if the main document contains read-only feature classes (views).
- For ATV files that use EN coding, the coding system is now imported correctly.
- Import of ATV files (EN coding, or 96/01 coding) now works as expected.
- Import of ISYBAU 96/01 *.S files containing manholes without SI3 records no longer causes the program to close unexpectedly.
- Import of ISYBAU 96/01 files containing incomplete inspection data no longer causes the program to close unexpectedly.
- Importing inspection data on a computer with German (Germany) local settings no longer closes unexpectedly.
- Import of ISYBAU 96/01 inspection pictures now works as expected.
- During import validation, invalid ISYBAU 96/01 *.k files no longer cause the program to close unexpectedly.

Inspection

- Inspection Editor: Fixing Single Damages (create a relation between rehabilitation and WW_SECTION) now works as expected.
- ISYBAU 96/01 classification values can now be imported.
NOTE: If the import file contains classification values, the import sets the value CLASS_VALUES_WRITE_PROTECTED to true (1). If this flag is set the classification algorithm will not overwrite the imported classification values.
- Inspection videos / pictures for manholes can now be imported.

[Return to Top](#)

Issues Resolved for AutoCAD 2010 and AutoCAD Map 3D 2010 Update 2 and Update 1

This update includes the resolution of the following issues:

General

Update 1

- Creating vector layers no longer causes a memory leak.

Update 2

- Cache files are left in the MapCache directory after closing AutoCAD Map 3D without saving the new drawing.

64-bit

Update 1

- An issue with the IRD module of ADE on a 64-bit operating system has been resolved. The program no longer closes unexpectedly if it has been running for a long time or the user has loaded a large data set that results in a higher address value.

Update 2

- Saving a drawing with link templates sometimes crashes AutoCAD Map 3D.

ADE Query

Update 1

- The <F1> Help button for the Data Condition dialog box now works as expected.

ADE Save Back

Update 2

- After an autosave, closing a drawing containing ADE queried objects crashes AutoCAD Map 3D.

Bulk Copy

Update 2

- Bulk copying from a SHP data set to Oracle would sometimes fail to copy numeric fields.

CAD on GIS

Update 1

- The following issues with overlay scalability have been resolved.
 - Previously, when you used overlay the program closed unexpectedly.
 - Using Intersect Overlay on the Harris data set with zipcodep and parcels layers no longer causes your map to disappear.
 - Using overlay on the complete Harris County database no longer causes the program to fail unexpectedly.
 - Overlaying PARCELS.shp with FLOOD.shp no longer results in a loss of feature data.
 - Overlaying files with dense data no longer causes the program to close unexpectedly.
 - Doing an intersection overlay on the Walton County .SHP file now works as expected.
 - Doing an overlay analysis on an intersection now works as expected. You no longer receive a message stating that you do not have enough memory to complete the analysis.
- The X marker now displays the correct value in non-WCS.
- A feature that is joined to a source is no longer deleted when it is from a different feature class.
- Editing primary table attributes that are not part of a joined layer now works as expected.
- The Ignore Rules setting in the Split/Merge group now works as expected.
- An issue with opening the Overlay Input dialog box has been resolved. Previously, the layer and feature class settings did not display and the program closed unexpectedly.
- Clicking the vertex layer of a multi polygon no longer causes the program to close unexpectedly.

Update 2

- Checking out a large number of features crashes AutoCAD Map 3D.
- Attempting to join a linestring to a multi-linestring via the PEDIT command fails.

Classification

Update 2

- Some menu items in the "Define Object Classification" dialog box are drawn covered in black.

COGO

Update 1

- When you use the MAPCGSETUP command, the Create Text Log checkbox is now selected as the default status.
- The number of temporary point symbols that display is now the same as the temporary symbols of the resulting point.

Update 2

- The MAPCGLIST command does not work on arcs.

Display Manager

Update 1

- Using the REGEN command while setting up a plot no longer causes the program to close unexpectedly.

Update 2

- Loading a .layer file created by Topobase and then closing the drawing crashes AutoCAD Map 3D.
- Running the REGEN command after undoing the delete of a topology element crashes AutoCAD Map 3D.
- After creating a new map and closing the drawing, attempting to create and close another drawing crashes AutoCAD Map 3D.
- Drawing layers based on an XREF data are incorrectly drawn using the line weight from an FDO layer.
- Feature label performance is much slower after applying AutoCAD Map 3D 2010 Update 1.

- FDO raster layers containing elevation data do not respect scale ranges

DWF Publishing

Update 2

- Individual point features are merged into groups when publishing to DWF.

FDO Display Manager

Update 1

- Advanced placement now displays all map labels.
- A performance issue with turning off all 150 layers in an Electric_NA has been resolved. Previously, selecting all layers and turning them off caused the program to run slowly.
- Loading a layer file with joined layers no longer causes the program to close unexpectedly.

FDO Oracle

Update 1

- Disconnecting a RDBMS data store with an empty feature class and then clicking Maximize/Restore Down no longer causes the program to close unexpectedly.
- An issue with loading a dump file and connecting to the schema has been resolved. Previously, some of the schema features did not display correctly and the data set was unusable.

Update 2

- Features containing null Z values cannot be edited.
- Remove version operation fails on Oracle 11.1.0.7.
- FDO curve strings containing only one segment are translated into SDO geometry with the wrong SDO_ETYPE definition.
- SQL requests are incorrectly constructed when table names have a length of 30 characters.

FDO Raster

Update 1

- Converting a new image to a grid layer no longer causes the program to close unexpectedly.

Update 2

- FDO rasters draw at the wrong location in layout view if the layer coordinate system is different from the map coordinate system.
- FDO rasters plot at the wrong location if the layer coordinate system is different from the map coordinate system.
- Adding a bitonal raster image crashes AutoCAD Map 3D.
- Gaps sometimes display between tiled images.
- Themed DEMs are not correctly displayed when running AutoCAD Map 3D on non-English operating systems.
- After connecting to a raster image with a very long file name, clicking on the connection in the Data Connect dialog crashes AutoCAD Map 3D.
- Zooming in/out after the raster file is renamed crashes AutoCAD Map 3D.

FDO SDF

Update 1

- Recreating an SDF spatial index on an existing SDF file now works as expected.

FDO SHP

Update 1

- Deleted rows no longer appear in the data source.

Update 2

- Attributes containing Hebrew, Greek, or Cyrillic characters are not displayed correctly in the Data Table.
- Under certain conditions, a SHP file can become corrupted when updating the geometry of features.
- Connecting to a SHP data set containing an invalid SHX index file crashes AutoCAD Map 3D.

FDO SQL Server 2008

Update 1

- Connecting to the bikeway data source no longer causes the program to close unexpectedly.

FDO SQL Server Spatial

Update 2

- Cannot set identity properties for view-based classes in which the view is based on multiple tables.

FDO WFS

Update 1

- Connecting to a WFS server now works as expected. The FDO WFS provider now retrieves all the feature classes from the server.

Update 2

- AutoCAD Map 3D cannot consume WFS layers published by MapGuide Enterprise 2008/2009.

FDO WMS

Update 2

- Enabling the "Cache WMS data" option in the Data Connect dialog after connecting to a WMS service crashes Map.
- Connecting to a WMS service fails with an unhandled exception while trying to read the WMS schema.

GIS Joins

Update 1

- Previously, when you selected Preview before launching the Context Menu, and then created a join between layers with multiple objects the program closed unexpectedly.

Update 2

- Selecting a large number of features on layer containing joined data uses excessive memory and can crash AutoCAD Map 3D.

Globalization

Update 2

- AutoCAD Map 3D sometimes crashes in module AcMapRightClickMenu.arx during start up.

Image

Update 2

- Inserting an image in a network folder using the MAPIINSERT command crashes AutoCAD Map 3D.
- The MAPIMANAGE command crashes AutoCAD Map 3D on a system configured with the Windows /3GB startup switch.

Import/Export

Update 1

- An issue with exporting object data points has been resolved. Previously, the point type data column did not contain any data.
- When you connect to a DGN file the program now imports the correct values for ms_link and entity_num.
- After importing a DGN file, all characters are displayed correctly.

Update 2

- Memory is not reclaimed after running the MAPEXPORTCURRENTMAPTODWG command.
- Object data does not get exported when running the _MAPEXPORT command from the CLI.
- EPF files are not honored when running the _MAPEXPORT command from the CLI.
- The MAPIMPORTFDO and MAPEXPORTFDO commands do not list existing ArcSDE connections.
- Mapping multiple layers to the same DGN level when exporting to DGN does not function correctly.

Install/Uninstall

Update 2

- An error message is displayed when installing AutoCAD Map 3D 2010 Update 1 on a non-English version of AutoCAD Map 3D.

MapGuide Interoperability

Update 2

- Using Publish to MapGuide on a map containing FDO layers styled using external symbol libraries can crash AutoCAD Map 3D.

.NET API

Update 1

- Selecting MgLayer.Selectable now works when calling MgLayer.ForceRefresh().

Update 2

- MPolygon objects cannot be created via the AcMPolygonMGD .NET API.

Plot/Publish

Update 2

- Advanced placement feature labels do not display when plotting to a DWF or PDF.

Schema Editor

Update 1

- Importing a schema while creating a SDF file now displays the correct attribute values.

Update 2

- With database connections, the Schema Editor displays an incomplete schema after adding new properties.

Topology

Update 2

- The Attribute option of the MAPTHEMTOPO command doesn't work when running from the CLI.

Transform/Rubbersheet

Update 2

- The ADERSHEET command mishandles MultiLeader and MLine entities.

UI

Update 2

- Closing an inactive drawing sometimes crashes AutoCAD Map 3D.
- Closing a drawing while a nested object class node is expanded and selected in the Map Explorer panel crashes AutoCAD Map 3D.
- Invoking buttons on the Feature Class Contextual ribbon tab when a feature class is not selected crashes AutoCAD Map 3D.

Workflow

Update 2

- Custom context menus added using the ActivityDesignerVerb API display as empty strings.
- Custom titles set on the File Open/Save dialog via the FileUIEditorParametersAttribute API display as empty strings.

Survey

Update 1

- Adding bulk copied survey data to your map now works as expected. The data store structure displays in the Survey tab.

2D Drawing

Update 1

- If the PLINETYPE system variable is set to 0, STRETCH does not work as expected on arc segments of polylines.
- When the PLINETYPE system variable is set to 0, the closing point of a polyline with segments of different widths do not display correctly.
- If you use the JOIN command on splines, a duplicate control point is inserted.
- When you use the JOIN command on multiple polylines, AutoCAD may become unstable.

Update 2

- When drawing a closed heavy weight polyline with different width for each segment, the polyline cannot be closed properly.

3D Modeling

Update 1

- When you open a drawing that contains solids, some solids display briefly and then disappear.
- If a grip on a mesh face, edge, or vertex is highlighted and you use the ViewCube, AutoCAD may become unstable.

3D Navigation Tools

Update 1

- When you use the 3DORBIT command, you cannot orbit correctly. You can only orbit around a single pivot point and you cannot orbit around a specific object in a large group of objects.

Update 2

- AutoCAD may become unstable while dragging the cube and releasing the cursor at the top of the canvas.

Action Recorder

Update 1

- An Action Recorder macro created in AutoCAD 2009 may fail to run in AutoCAD 2010.

Annotation Scaling

Update 1

- When there are xrefs in a drawing, changing annotation scales takes a long time.
- When an annotative style multiline text (mtext) is rotated or surrounded by a hatch, the boundary box does not display correctly.

API

Update 2

- Exploding a block using "NetExplode" API modifies the "Global width" property of the polyline.

Blocks

Update 1

- When you turn off the display of an attribute with a visibility parameter in a dynamic block, the Enhanced Attribute Editor lists attribute prompts incorrectly.
- You cannot copy an object from an AutoCAD 2009 drawing and paste it as a block into an AutoCAD 2010 drawing.
- You cannot use the Properties palette to set the value of a action parameter to 0.
- When you delete a constraint parameter from a dynamic block, AutoCAD may become unstable.
- You cannot stretch some dynamic blocks as expected.

Check Spelling

Update 1

- When you run spellcheck on uppercase words, AutoCAD may become unstable.

CUI

Update 1

- When you save a workspace, if the Enterprise CUIx file is read-only, AutoCAD may become unstable.
- Toolbar flyouts close unexpectedly.

Customer Involvement Program

Update 2

- AutoCAD may fail to start up on Windows 7 workstations with Windows 2008 Server on the same subnet.

Data Extraction

Update 1

- When you use Data Extraction to extract the value of a block's multiline attribute into a table, text formatting code displays in the table.

Update 2

- Constrained attribute values may not extract properly based on drawing order.

DGN Support

Update 1

- When a DGN file is imported, some attributes are missing.

Update 2

- Restores the ability to use any extension when attaching DGN files.
- DGNIMPORT command with "Ignore all external references" option may not work.

Digital Signature

Update 1

- When you open a drawing, the Invalid signature dialog box may display even if the digital signature is valid.

Dimensions

Update 1

- You cannot create an angular dimension between two lines in different XY planes.

Update 2

- AutoCAD may become unstable when stretching multiple dimensions with dimbreaks applied.
- Cyrillic characters in dimension text may cause AutoCAD to incorrectly report that the drawing is corrupt after running RECOVER.

DWF

Update 1

- When the background color in AutoCAD is black, some DWF underlays do not display correctly.

DXF

Update 2

- When opening some DXF Files, you may receive a DXF error.

Dynamic Dimensions

Update 1

- When you use the COPYBASE command with Dynamic Input on, AutoCAD may become unstable.

ETransmit

Update 2

- AutoCAD may become unstable when using eTransmit.

Express Tools

Update 2

- AutoCAD may become unstable when editing height values for arc-aligned text in the Properties Palette.

Export Layout

Update 1

- When you use the EXPORTLAYOUT command on files in which Standard styles have been renamed, AutoCAD may become unstable.

External References

Update 1

- You may not be able to bind multiple xrefs that include nested xrefs.
- With the XATTACH command, you cannot select multiple xrefs.

Update 2

- Xref's with true color gradients now display properly in 2D graphics modes.
- AutoCAD may display an error message about logic color -5 when attaching an xref.
- AutoCAD may become unstable when binding an xref.
- AutoCAD may become unstable when using right-click menu on an xref.

File Open

Update 1

- When you try to open a drawing file from a FTP site, AutoCAD may become unstable.

Update 2

- After applying Vista SP2 or on Windows 7 it is not possible to double click and open a folder that is using DFS Namespace.
- AutoCAD drawings saved in Vault may not display 2010 properties properly.
- Opening drawing files from older releases of AutoCAD may take a while to open.
- Unable to use asterisk "*" symbol on wildcard searches.

Find and Replace

Update 1

- If you use Find and Replace, autonumbering is deleted.

Font

Update 2

- AutoCAD may become unstable when using older version ".SHX" fonts.

General UI

Update 1

- On the status bar, the model or paper space button may be missing, even after you have repeatedly turned it on.

Update 2

- AutoCAD may become unstable when more than one bubble is displayed and then closed.

Graphic System

Update 1

- When the background color is changed in an active paperspace viewport, the cursor disappears.
- After you plot a drawing in AutoCAD, if you lock Microsoft Windows and then unlock it, AutoCAD may become unstable.

Hatch

Update 1

- When you turn off the current layer while grip editing a hatch boundary, AutoCAD may become unstable.
- When the UCSVP system variable is set to 0, hatched objects align with the WCS rather than the UCS.
- When you grip-edit a hatch with an elliptical boundary, AutoCAD may become unstable.

Update 2

- AutoCAD may become unstable when double clicking on hatched areas in a drawing.

Image

Update 1

- When you attach some TIFF images, AutoCAD may become unstable.
- TIFF images may not display correctly.

Update 2

- Rotating an image with plines may appear to offset from the image.
- AutoCAD session may hang when plotting drawings with rotated Mr SID images attached.

InfoCenter

Update 2

- Balloon notification in InfoCenter is blank when Windows 7 display Theme is set to Classic.

Inquiry Tools

Update 1

- The AREA command fails on some polylines.

Keyboard Modifiers

Update 1

- When temporary overrides are enabled, keyboard input using the Shift key may not display on the command line.

Layers

Update 1

- Xrefs on locked layers do not display faded as expected. The LAYLOCKFADECTL system variable fails to alter them.
- When you delete a certain layer, all layers may be deleted.
- On the ribbon, the Layer drop-down does not display layers based on the current layer filter.

Update 2

- Layer groups may not remain deleted after reopening the Layer Manager.
- AutoCAD may become unstable when switching layouts if the Layer Description column is frozen.
- Objects on "layer 0" in an external reference do not display when the layer is turned on from the current drawing.

Licensing

Update 1

- When you set your system time back more than 2 days, your license is broken.
- When you use a proxy server for Internet access, the License Transfer Utility fails.

Linetype

Update2

- Some of the linetypes with text do not display correctly.

LiveUpdate

Update 1

- When you have Autodesk 2009 and AutoCAD 2010 installed side-by-side, LiveUpdate does not work in AutoCAD 2009.

Measurement Tools

Update 1

- When you use the MEASUREGEOM command, the tooltip and command line results are different. The tooltip result is incorrect.
- When you use the DIST command in model space, the results at the tooltip and the command line are different. The tooltip result is incorrect.

Migration

Update 1

- When you export certain profiles, AutoCAD may become unstable.
- When you save certain profiles migrated from AutoCAD 2009, AutoCAD 2010 may become unstable.

Multileader (mleader)

Update 1

- When you mirror mleaders that contain blocks with multiline attributes, the mirrored attributes are incorrectly justified.

OLE

Update 2

- AutoCAD can be slow when updating OLE objects in Microsoft Word 2007.
- "Paste to Original Coordinates" is disabled in right-click context menu after copying objects from another open drawing.
- AutoCAD may become unstable when pasting drawing files into Microsoft Word.

Organic Modeling

Update 2

- Gizmo may not display while in 3D Orbit.

Osnap

Update 2

- 64-bit AutoCAD may become unstable when using PRESSPULL on mesh object.

PDF

Update 1

- When you plot a drawing as a PDF file, the layer order is not alphabetized as expected.
- When a drawing that contains layers with names that include special characters is exported as a PDF, it cannot be opened.
- When you attach a large PDF file to your drawing, or try to attach it and then cancel the operation, performance is slow.

Update 2

- AutoCAD may hang when plotting large images to PDF.

Property Palette

Update 2

- AutoCAD may become unstable when using the Property Palette.

Publish

Update 1

- When Windows XP is set to Windows Classic theme, on any Asian language version of AutoCAD 2010, if you use the PUBLISH command, AutoCAD freezes.

Purge

Update 1

- On Windows Vista, in the Purge dialog box, when you attempt to use the Ctrl or Shift keys to select multiple items, the first highlighted item is de-selected.

Quick Access Toolbar

Update 2

- Opening a linked drawing from a Microsoft Office product may cause the Quick Access Toolbar to no longer display.

QUICKCALC

Update 1

- Calculations performed by the QUICKCALC command may be incorrect.

Recover

Update 1

- When you use the RECOVER command on an AutoCAD 2000 formatted drawing file, polylines and splines in the drawing are deleted.

Update 2

- Opening drawings with dense hatch appear to hang at 31%.
- Some older drawings containing 3DSOLIDS do not display.

Reference Edit

Update 1

- When you use the REFSET command, you can only add one instance of a block to the reference set. Other instances are rejected and an error message displays.

Ribbon

Update 1

- Text styles from an attached xref display in the Ribbon text style control.
- When you switch between AutoCAD Classic and other workspaces (for example, 2D Drafting & Annotation or 3D Modeling), performance becomes slow.
- Layers with a VP Freeze for a viewport indicate the VP Freeze status even when the viewport is not active.
- When you click the File menu in the zero doc state, AutoCAD freezes.
- After you unload a partial CUI file, a tab remains on the ribbon. If you click the tab, AutoCAD may become unstable.

Update 2

- AutoCAD may become unstable when switching to the Render tab of the Ribbon when .NET 4 is on the system.
- Legacy menu bar may display over the Ribbon when AutoCAD is not responding while opening large drawings.
- AutoCAD may become unstable when using Clipping Boundary control in the Ribbon.
- AutoCAD may become unstable when dragging a Ribbon Panel on Windows 7 64-bit operating system.

Section & Flatten

Update 1

- When you section solids through API, multiple memory leaks occur.

Update 2

- SECTIONPLANETOBLOCK may not work correctly when the sectionplane is not intersecting an object.
- After using the command SECTIONPLANE AutoCAD may become unstable.
- SECTIONPLANE may not display all cutaway geometry.

Seek

Update 1

- The SHAREWITHSEEK command may not work if the port used to communicate with Seek is blocked by a firewall.

Snaps

Update 1

- When you snap to the grid, there may be a slight offset from the grid.

Text

Update 2

- Bigfont may not be converted properly when saving a DWG to 2004 file format.

UCS

Update 1

- In AutoCAD 2010 German, you cannot use ribbon controls to modify coordinates.

Visual Basic

Update 2

- May not be able to restore minimized AutoCAD with VBA loaded.

Visual Lisp

Update 1

- When you use the CECOLOR system variable, the value returned by using the Getvar function is incorrect.

Update 2

- LISP incorrectly converts some Japanese characters to CIF.

