

AUTODESK®
TOXIK™ 
2009
Windows

Installation Guide

Autodesk®



© 2009 Autodesk, Inc. All rights reserved. Except as otherwise permitted by Autodesk, Inc., this publication, or parts thereof, may not be reproduced in any form, by any method, for any purpose.

Certain materials included in this publication are reprinted with the permission of the copyright holder.

Portions relating to Berkeley DB software Copyright ©1990-2002, Sleepycat Software. All rights reserved. Redistribution and use in source and binary forms, with or without modification, are permitted provided that the following conditions are met: 1. Redistributions of source code must retain the above copyright notice, this list of conditions and the following disclaimer. 2. Redistributions in binary form must reproduce the above copyright notice, this list of conditions and the following disclaimer in the documentation and/or other materials provided with the distribution. 3. Redistributions in any form must be accompanied by information on how to obtain complete source code for the DB software and any accompanying software that uses the DB software. The source code must either be included in the distribution or be available for no more than the cost of distribution plus a nominal fee, and must be freely redistributable under reasonable conditions. For an executable file, complete source code means the source code for all modules it contains. It does not include source code for modules or files that typically accompany the major components of the operating system on which the executable file runs. THIS SOFTWARE IS PROVIDED BY SLEEPYCAT SOFTWARE "AS IS" AND ANY EXPRESS OR IMPLIED WARRANTIES, INCLUDING, BUT NOT LIMITED TO, THE IMPLIED WARRANTIES OF MERCHANTABILITY, FITNESS FOR A PARTICULAR PURPOSE, OR NON-INFRINGEMENT, ARE DISCLAIMED. IN NO EVENT SHALL SLEEPYCAT SOFTWARE BE LIABLE FOR ANY DIRECT, INDIRECT, INCIDENTAL, SPECIAL, EXEMPLARY, OR CONSEQUENTIAL DAMAGES (INCLUDING, BUT NOT LIMITED TO, PROCUREMENT OF SUBSTITUTE GOODS OR SERVICES; LOSS OF USE, DATA, OR PROFITS; OR BUSINESS INTERRUPTION) HOWEVER CAUSED AND ON ANY THEORY OF LIABILITY, WHETHER IN CONTRACT, STRICT LIABILITY, OR TORT (INCLUDING NEGLIGENCE OR OTHERWISE) ARISING IN ANY WAY OUT OF THE USE OF THIS SOFTWARE, EVEN IF ADVISED OF THE POSSIBILITY OF SUCH DAMAGE.

Portions relating to Berkeley DB software Copyright © 1990, 1993, 1994, 1995, The Regents of the University of California. All rights reserved. Redistribution and use in source and binary forms, with or without modification, are permitted provided that the following conditions are met: 1. Redistributions of source code must retain the above copyright notice, this list of conditions and the following disclaimer. 2. Redistributions in binary form must reproduce the above copyright notice, this list of conditions and the following disclaimer in the documentation and/or other materials provided with the distribution. 3. Neither the name of the University nor the names of its contributors may be used to endorse or promote products derived from this software without specific prior written permission. THIS SOFTWARE IS PROVIDED BY THE REGENTS AND CONTRIBUTORS "AS IS" AND ANY EXPRESS OR IMPLIED WARRANTIES, INCLUDING, BUT NOT LIMITED TO, THE IMPLIED WARRANTIES OF MERCHANTABILITY AND FITNESS FOR A PARTICULAR PURPOSE ARE DISCLAIMED. IN NO EVENT SHALL THE REGENTS OR CONTRIBUTORS BE LIABLE FOR ANY DIRECT, INDIRECT, INCIDENTAL, SPECIAL, EXEMPLARY, OR CONSEQUENTIAL DAMAGES (INCLUDING, BUT NOT LIMITED TO, PROCUREMENT OF SUBSTITUTE GOODS OR SERVICES; LOSS OF USE, DATA, OR PROFITS; OR BUSINESS INTERRUPTION) HOWEVER CAUSED AND ON ANY THEORY OF LIABILITY, WHETHER IN CONTRACT, STRICT LIABILITY, OR TORT (INCLUDING NEGLIGENCE OR OTHERWISE) ARISING IN ANY WAY OUT OF THE USE OF THIS SOFTWARE, EVEN IF ADVISED OF THE POSSIBILITY OF SUCH DAMAGE.

Portions relating to Berkeley DB software Copyright ©1995, 1996, The President and Fellows of Harvard University. All rights reserved. Redistribution and use in source and binary forms, with or without modification, are permitted provided that the following conditions are met: 1. Redistributions of source code must retain the above copyright notice, this list of conditions and the following disclaimer. 2. Redistributions in binary form must reproduce the above copyright notice, this list of conditions and the following disclaimer in the documentation and/or other materials provided with the distribution. 3. Neither the name of the University nor the names of its contributors may be used to endorse or promote products derived from this software without specific prior written permission. THIS SOFTWARE IS PROVIDED BY HARVARD AND ITS CONTRIBUTORS "AS IS" AND ANY EXPRESS OR IMPLIED WARRANTIES, INCLUDING, BUT NOT LIMITED TO, THE IMPLIED WARRANTIES OF MERCHANTABILITY AND FITNESS FOR A PARTICULAR PURPOSE ARE DISCLAIMED. IN NO EVENT SHALL HARVARD OR ITS CONTRIBUTORS BE LIABLE FOR ANY DIRECT, INDIRECT, INCIDENTAL, SPECIAL, EXEMPLARY, OR CONSEQUENTIAL DAMAGES (INCLUDING, BUT NOT LIMITED TO, PROCUREMENT OF SUBSTITUTE GOODS OR SERVICES; LOSS OF USE, DATA, OR PROFITS; OR BUSINESS INTERRUPTION) HOWEVER CAUSED AND ON ANY THEORY OF LIABILITY, WHETHER IN CONTRACT, STRICT LIABILITY, OR TORT (INCLUDING NEGLIGENCE OR OTHERWISE) ARISING IN ANY WAY OUT OF THE USE OF THIS SOFTWARE, EVEN IF ADVISED OF THE POSSIBILITY OF SUCH DAMAGE.

Portions relating to Flexnet and the Apache Software Foundation Version 1.1 Copyright © 2000 The Apache Software Foundation. All rights reserved. Redistribution and use in source and binary forms, with or without modification, are permitted provided that the following conditions are met: Redistributions of source code must retain the above copyright notice, this list of conditions and the following disclaimer. Redistributions in binary form must reproduce the above copyright notice, this list of conditions and the following disclaimer in the documentation and/or other materials provided with the distribution. The end-user documentation included with the redistribution, if any, must include the following acknowledgment: "This product includes software developed by the Apache Software Foundation (<http://www.apache.org/>)". Alternately, this acknowledgment may appear in the software itself, if and wherever such third-party acknowledgments normally appear. The names "Apache" and "Apache Software Foundation" must not be used to endorse or promote products derived from this software without prior written permission. For written permission, please contact apache@apache.org. Products derived from this software may not be called "Apache", nor may "Apache" appear in their name, without prior written permission of the Apache Software Foundation. THIS SOFTWARE IS PROVIDED "AS IS" AND ANY EXPRESSED OR IMPLIED WARRANTIES, INCLUDING, BUT NOT LIMITED TO, THE IMPLIED WARRANTIES OF MERCHANTABILITY AND FITNESS FOR A PARTICULAR PURPOSE ARE DISCLAIMED. IN NO EVENT SHALL THE APACHE SOFTWARE FOUNDATION OR ITS CONTRIBUTORS BE LIABLE FOR ANY DIRECT, INDIRECT, INCIDENTAL, SPECIAL, EXEMPLARY, OR CONSEQUENTIAL DAMAGES (INCLUDING, BUT NOT LIMITED TO, PROCUREMENT OF SUBSTITUTE GOODS OR SERVICES; LOSS OF USE, DATA, OR PROFITS; OR BUSINESS INTERRUPTION) HOWEVER CAUSED AND ON ANY THEORY OF LIABILITY,

WHETHER IN CONTRACT, STRICT LIABILITY, OR TORT (INCLUDING NEGLIGENCE OR OTHERWISE) ARISING IN ANY WAY OUT OF THE USE OF THIS SOFTWARE, EVEN IF ADVISED OF THE POSSIBILITY OF SUCH DAMAGE. This software consists of voluntary contributions made by many individuals on behalf of the Apache Software Foundation. For more information on the Apache Software Foundation, please see <http://www.apache.org/>. Portions of this software are based upon public domain software originally written at the National Center for Supercomputer Applications, University of Illinois, Urbana-Champaign.

Portions relating to Flexnet and the Open SSL Project Copyright © 1998-2003 The OpenSSL Project. All rights reserved. Redistribution and use in source and binary forms, with or without modification, are permitted provided that the following conditions are met: Redistributions of source code must retain the above copyright notice, this list of conditions and the following disclaimer. Redistributions in binary form must reproduce the above copyright notice, this list of conditions and the following disclaimer in the documentation and/or other materials provided with the distribution. All advertising materials mentioning features or use of this software must display the following acknowledgment: "This product includes software developed by the OpenSSL Project for use in the OpenSSL Toolkit. (<http://www.openssl.org/>)". The names "OpenSSL Toolkit" and "OpenSSL Project" must not be used to endorse or promote products derived from this software without prior written permission. For written permission, please contact openssl-core@openssl.org. Products derived from this software may not be called "OpenSSL" nor may "OpenSSL" appear in their names without prior written permission of the OpenSSL Project. Redistributions of any form whatsoever must retain the following acknowledgment: "This product includes software developed by the OpenSSL Project for use in the OpenSSL Toolkit (<http://www.openssl.org/>)". THIS SOFTWARE IS PROVIDED BY THE OPENSLL PROJECT "AS IS" AND ANY EXPRESSED OR IMPLIED WARRANTIES, INCLUDING, BUT NOT LIMITED TO, THE IMPLIED WARRANTIES OF MERCHANTABILITY AND FITNESS FOR A PARTICULAR PURPOSE ARE DISCLAIMED. IN NO EVENT SHALL THE OPENSLL PROJECT OR ITS CONTRIBUTORS BE LIABLE FOR ANY DIRECT, INDIRECT, INCIDENTAL, SPECIAL, EXEMPLARY, OR CONSEQUENTIAL DAMAGES (INCLUDING, BUT NOT LIMITED TO, PROCUREMENT OF SUBSTITUTE GOODS OR SERVICES; LOSS OF USE, DATA, OR PROFITS; OR BUSINESS INTERRUPTION) HOWEVER CAUSED AND ON ANY THEORY OF LIABILITY, WHETHER IN CONTRACT, STRICT LIABILITY, OR TORT (INCLUDING NEGLIGENCE OR OTHERWISE) ARISING IN ANY WAY OUT OF THE USE OF THIS SOFTWARE, EVEN IF ADVISED OF THE POSSIBILITY OF SUCH DAMAGE.

Portions relating to Flexnet and Eric Young Copyright © 1995-1998 Eric Young (eay@cryptsoft.com) All rights reserved. This package is an SSL implementation written by Eric Young (eay@cryptsoft.com). The implementation was written so as to conform with Netscape's SSL. This library is free for commercial and non-commercial use as long as the following conditions are adhered to. The following conditions apply to all code found in this distribution, be it the RC4, RSA, ICM, DES, etc., code; not just the SSL code. The SSL documentation included with this distribution is covered by the same copyright terms except that the holder is Tim Hudson (tjh@cryptsoft.com). Copyright remains Eric Young's, and as such any Copyright notices in the code are not to be removed. If this package is used in a product, Eric Young should be given attribution as the author of the parts of the library used. This can be in the form of a textual message at program startup or in documentation (online or textual) provided with the package. Redistribution and use in source and binary forms, with or without modification, are permitted provided that the following conditions are met: 1. Redistributions of source code must retain the copyright notice, this list of conditions and the following disclaimer. 2. Redistributions in binary form must reproduce the above copyright notice, this list of conditions and the following disclaimer in the documentation and/or other materials provided with the distribution. 3. All advertising materials mentioning features or use of this software must display the following acknowledgement: "This product includes cryptographic software written by Eric Young (eay@cryptsoft.com)". The word "cryptographic" can be left out if the routines from the library being used are not cryptographic related). 4. If you include any Windows specific code (or a derivative thereof) from the apps directory (application code) you must include an acknowledgement: "This product includes software written by Tim Hudson (tjh@cryptsoft.com)". THIS SOFTWARE IS PROVIDED BY ERIC YOUNG "AS IS" AND ANY EXPRESS OR IMPLIED WARRANTIES, INCLUDING, BUT NOT LIMITED TO, THE IMPLIED WARRANTIES OF MERCHANTABILITY AND FITNESS FOR A PARTICULAR PURPOSE ARE DISCLAIMED. IN NO EVENT SHALL THE AUTHOR OR CONTRIBUTORS BE LIABLE FOR ANY DIRECT, INDIRECT, INCIDENTAL, SPECIAL, EXEMPLARY, OR CONSEQUENTIAL DAMAGES (INCLUDING, BUT NOT LIMITED TO, PROCUREMENT OF SUBSTITUTE GOODS OR SERVICES; LOSS OF USE, DATA, OR PROFITS; OR BUSINESS INTERRUPTION) HOWEVER CAUSED AND ON ANY THEORY OF LIABILITY, WHETHER IN CONTRACT, STRICT LIABILITY, OR TORT (INCLUDING NEGLIGENCE OR OTHERWISE) ARISING IN ANY WAY OUT OF THE USE OF THIS SOFTWARE, EVEN IF ADVISED OF THE POSSIBILITY OF SUCH DAMAGE.

Portions relating to Libtiff Copyright © 1988-1997 Sam Leffler. Copyright © 1991-1997 Silicon Graphics, Inc. Permission to use, copy, modify, distribute, and sell this software and its documentation for any purpose is hereby granted without fee, provided that (i) the above copyright notices and this permission notice appear in all copies of the software and related documentation, and (ii) the names of Sam Leffler and Silicon Graphics may not be used in any advertising or publicity relating to the software without the specific, prior written permission of Sam Leffler and Silicon Graphics. THE SOFTWARE IS PROVIDED "AS-IS" AND WITHOUT WARRANTY OF ANY KIND, EXPRESS, IMPLIED OR OTHERWISE, INCLUDING WITHOUT LIMITATION, ANY WARRANTY OF MERCHANTABILITY OR FITNESS FOR A PARTICULAR PURPOSE. IN NO EVENT SHALL SAM LEFFLER OR SILICON GRAPHICS BE LIABLE FOR ANY SPECIAL, INCIDENTAL, INDIRECT OR CONSEQUENTIAL DAMAGES OF ANY KIND, OR ANY DAMAGES WHATSOEVER RESULTING FROM LOSS OF USE, DATA OR PROFITS, WHETHER OR NOT ADVISED OF THE POSSIBILITY OF DAMAGE, AND ON ANY THEORY OF LIABILITY, ARISING OUT OF OR IN CONNECTION WITH THE USE OR PERFORMANCE OF THIS SOFTWARE.

Portions relating to OpenEXR Copyright © 2002, Industrial Light & Magic, a division of Lucas Digital Ltd. LLC. All rights reserved. Redistribution and use in source and binary forms, with or without modification, are permitted provided that the following conditions are met: Redistributions of source code must retain the above copyright notice, this list of conditions and the following disclaimer. Redistributions in binary form must reproduce the above copyright notice, this list of conditions and the following disclaimer in the documentation and/or other materials provided with the distribution. Neither the name of Industrial Light & Magic nor the names of its contributors may be used to endorse or promote products derived from this software without specific prior written permission. THIS SOFTWARE IS PROVIDED BY THE COPYRIGHT HOLDERS AND

CONTRIBUTORS "AS IS" AND ANY EXPRESS OR IMPLIED WARRANTIES, INCLUDING, BUT NOT LIMITED TO, THE IMPLIED WARRANTIES OF MERCHANTABILITY AND FITNESS FOR A PARTICULAR PURPOSE ARE DISCLAIMED. IN NO EVENT SHALL THE COPYRIGHT OWNER OR CONTRIBUTORS BE LIABLE FOR ANY DIRECT, INDIRECT, INCIDENTAL, SPECIAL, EXEMPLARY, OR CONSEQUENTIAL DAMAGES (INCLUDING, BUT NOT LIMITED TO, PROCUREMENT OF SUBSTITUTE GOODS OR SERVICES; LOSS OF USE, DATA, OR PROFITS; OR BUSINESS INTERRUPTION) HOWEVER CAUSED AND ON ANY THEORY OF LIABILITY, WHETHER IN CONTRACT, STRICT LIABILITY, OR TORT (INCLUDING NEGLIGENCE OR OTHERWISE) ARISING IN ANY WAY OUT OF THE USE OF THIS SOFTWARE, EVEN IF ADVISED OF THE POSSIBILITY OF SUCH DAMAGE.

Portions relating to FreeType 2.2.1 are copyright © 2006 The FreeType Project (www.freetype.org). All rights reserved.

Portions relating to JPEG © Copyright 1991-1998 Thomas G. Lane. All Rights Reserved,

Portions relating to OpenGL® Sample Implementation 1.2.1, 2001, developed by Silicon Graphics, Inc. The Original Code is Copyright © 1991-1993 Silicon Graphics, Inc. Copyright in any portions created by third parties is as indicated elsewhere herein. All Rights Reserved.

Portions relating to Valgrind Copyright © 2000-2007 Julian Seward. All rights reserved. Distributed under the terms of the GNU General Public License.

Portions relating to libxfs Copyright © 2005 Silicon Graphics, Inc. All Rights Reserved. Distributed under the terms of the GNU General Public License.

Portions relating to libquicktime v 1.0.2, Copyright 2007. Distributed under the terms of the GNU General Public License.

Portions related to Color Transformation Language are Copyright © 2006 Academy of Motion Picture Arts and Sciences ("A.M.P.A.S."). Portions contributed by others as indicated. All rights reserved. A world-wide, royalty-free, non-exclusive right to distribute, copy, modify, create derivatives, and use, in source and binary forms, is hereby granted, subject to acceptance of this license. Performance of any of the aforementioned acts indicates acceptance to be bound by the following terms and conditions: Redistributions of source code must retain the above copyright notice, this list of conditions and the Disclaimer of Warranty. Redistributions in binary form must reproduce the above copyright notice, this list of conditions and the Disclaimer of Warranty in the documentation and/or other materials provided with the distribution. Nothing in this license shall be deemed to grant any rights to trademarks, copyrights, patents, trade secrets or any other intellectual property of A.M.P.A.S. or any contributors, except as expressly stated herein, and neither the name of A.M.P.A.S. nor any other contributors to this software, may be used to endorse or promote products derived from this software without specific prior written permission of A.M.P.A.S. or contributor, as appropriate. This license shall be governed by the laws of the State of California, and subject to the jurisdiction of the courts therein. Disclaimer of Warranty: THIS SOFTWARE IS PROVIDED BY A.M.P.A.S. AND CONTRIBUTORS "AS IS" AND ANY EXPRESS OR IMPLIED WARRANTIES, INCLUDING, BUT NOT LIMITED TO, THE IMPLIED WARRANTIES OF MERCHANTABILITY, FITNESS FOR A PARTICULAR PURPOSE, AND NON-INFRINGEMENT ARE DISCLAIMED. IN NO EVENT SHALL A.M.P.A.S., ANY CONTRIBUTORS OR DISTRIBUTORS BE LIABLE FOR ANY DIRECT, INDIRECT, INCIDENTAL, SPECIAL, EXEMPLARY, OR CONSEQUENTIAL DAMAGES (INCLUDING, BUT NOT LIMITED TO, PROCUREMENT OF SUBSTITUTE GOODS OR SERVICES; LOSS OF USE, DATA, OR PROFITS; OR BUSINESS INTERRUPTION) HOWEVER CAUSED AND ON ANY THEORY OF LIABILITY, WHETHER IN CONTRACT, STRICT LIABILITY, OR TORT (INCLUDING NEGLIGENCE OR OTHERWISE) ARISING IN ANY WAY OUT OF THE USE OF THIS SOFTWARE, EVEN IF ADVISED OF THE POSSIBILITY OF SUCH DAMAGE.

Portions relating to Doxygen 1.5.6 are Copyright © 1997-2008 by Dimitri van Heesch. Permission to use, copy, modify, and distribute this software and its documentation under the terms of the GNU General Public License is hereby granted. No representations are made about the suitability of this software for any purpose. It is provided "as is" without express or implied warranty.

Trademarks

The following are registered trademarks or trademarks of Autodesk, Inc., in the USA and other countries: 3DEC (design/logo), 3December, 3December.com, 3ds Max, ADI, Alias, Alias (swirl design/logo), AliasStudio, Alias|Wavefront (design/logo), ATC, AUGI, AutoCAD, AutoCAD Learning Assistance, AutoCAD LT, AutoCAD Simulator, AutoCAD SQL Extension, AutoCAD SQL Interface, Autodesk, Autodesk Envision, Autodesk Insight, Autodesk Intent, Autodesk Inventor, Autodesk Map, Autodesk MapGuide, Autodesk Streamline, AutoLISP, AutoSnap, AutoSketch, AutoTrack, Backdraft, Built with ObjectARX (logo), Burn, Buzzsaw, CAiCE, Can You Imagine, Character Studio, Cinestream, Civil 3D, Cleaner, Cleaner Central, ClearScale, Colour Warper, Combustion, Communication Specification, Constructware, Content Explorer, Create>what's>Next> (design/logo), Dancing Baby (image), DesignCenter, Design Doctor, Designer's Toolkit, DesignKids, DesignProf, DesignServer, DesignStudio, Design|Studio (design/logo), Design Web Format, DWF, DWG, DWG (logo), DWG Extreme, DWG TrueConvert, DWG TrueView, DXF, Ecotect, Exposure, Extending the Design Team, FBX, Filmbox, FMDesktop, Freewheel, GDX Driver, Gmax, Green Building Studio, Heads-up Design, Heidi, HumanIK, IDEA Server, i-drop, ImageModeler, iMOUT, Incinerator, Inventor, Inventor LT, Kaydara, Kaydara (design/logo), Kynapse, Kynogon, LocationLogic, Lustre, Matchmover, Maya, Mechanical Desktop, MotionBuilder, Movimento, Mudbox, NavisWorks, ObjectARX, ObjectDBX, Open Reality, Opticore, Opticore Opus, PolarSnap, PortfolioWall, Powered with Autodesk Technology, Productstream, ProjectPoint, ProMaterials, RasterDWG, Reactor, RealDWG, Real-time Roto, REALVIZ, Recognize, Render Queue, Retimer, Reveal, Revit, Showcase, ShowMotion, SketchBook, SteeringWheels, Stitcher, StudioTools, Topobase, Toxik, TrustedDWG, ViewCube, Visual, Visual Construction, Visual Drainage, Visual Landscape, Visual Survey, Visual Toolbox, Visual LISP, Voice Reality, Volo, Vtour, Wiretap, and WiretapCentral.

The following are registered trademarks or trademarks of Autodesk Canada Co. in the USA and/or Canada and other countries: Backburner, Discreet, Fire, Flame, Flint, Frost, Inferno, Multi-Master Editing, River, Smoke, Sparks, Stone, and Wire.

All other brand names, product names or trademarks belong to their respective holders.

Disclaimer

THIS PUBLICATION AND THE INFORMATION CONTAINED HEREIN IS MADE AVAILABLE BY AUTODESK, INC. "AS IS". AUTODESK, INC. DISCLAIMS ALL WARRANTIES, EITHER EXPRESS OR IMPLIED, INCLUDING BUT NOT LIMITED TO ANY IMPLIED WARRANTIES OF MERCHANTABILITY OR FITNESS FOR A PARTICULAR PURPOSE REGARDING THESE MATERIALS.

Published by:

Autodesk, Inc.

111 McInnis Parkway

San Rafael, CA 94903, USA

Title: Autodesk Toxik 2009

Document Version: 1

Date: February 19, 2009

contents

Contents

1	Introduction	1
	Summary	1
	Overview.....	1
	Audience.....	1
	Autodesk Toxik Components.....	2
	Toxik Configuration.....	2
	Documentation and Training.....	3
2	Downloading the Distribution	5
	Summary	5
	Overview.....	5
	Downloading the Distribution.....	5
3	Licensing	7
	Summary	7
	Overview.....	7
	Technical Assistance.....	8
	Installing the Trial Mode.....	8
	Installing the Standalone License.....	10
	Installing the License Server.....	13

4	Installing Toxik	21
	Summary	21
	Overview.....	21
	Before You Begin	21
	Installing Toxik	22
5	Starting Toxik	29
	Summary	29
	Starting Toxik	29
6	Uninstalling Toxik	31
	Summary	31
	Overview.....	31
	Uninstalling Toxik	31
	Uninstalling the License Server.....	33
7	Setting Up a Broadcast Monitor	37
	Summary	37
	Overview.....	37
	Setting Up a Broadcast Monitor.....	37
A	Appendix A	39
	Summary	39
	Overview.....	39
	System Requirements.....	40
	Supported Graphics Cards	41
	Bandwidth Requirements	42
	Index	45



Introduction

Summary

- [Overview](#) 1
- [Audience](#) 1
- [Autodesk Toxik Components](#) 2
- [Toxik Configuration](#) 2
- [Documentation and Training](#) 3

Overview

Welcome to the Autodesk *Toxik 2009 Installation Guide for Windows*. Toxik is Autodesk’s interactive solution for film compositing. It features a full High Dynamic Range (HDR) pipeline, next-generation 3D compositing, high performance interaction at extremely high resolutions and advanced rendering. It primarily features a databaseless workflow for data management, one Toxik seat, one scripting license, and unlimited rendering capabilities.

The Toxik seat can be updated with extensions that add functionality to the product by the means of new tools and core fixes.

This edition of Toxik is supported on Windows 32 and 64 bit workstations. It uses Python® for scripting.

This guide explains how to install Toxik and its software components.

Audience

This document is intended for the person or artist that will be both installing and using the Toxik software.

To carry out the installation with ease, you should be familiar with network-ready software and network topology issues, license management technology, the Windows operating system, as well as the general principles of software installation.

If you are not familiar with the above subjects, note that every effort has been made to ensure a smooth installation, whatever your level of experience. If you have difficulties, please contact Autodesk technical support.

Autodesk Toxik Components

A complete Toxik installation consists of a number of components.

Toxik Creative Application

The heart of Toxik is the creative application that permits the creation and playback of complex compositions, and supports manipulation of compositions in the media player itself.

Toxik License Server

The license server used in Toxik is FLEXnet™ 10.8.2.1. The license server keeps track of what components are running, and other licensing details. The license server is optional, and only needs to be installed on one machine on the network if needed.

Toxik Portable License Utility

The Portable License Utility is an Autodesk common component that allows a Macrovision, SafeCast™ node-locked license to be transferred between machines or nodes, without requiring connection to a network. Effectively disabling the product on the original machine, and enabling the product on the destination machine.

Toxik Scripting

Toxik scripting provides Python-based access to Toxik through a command-line interface. Scripting provides an effective means of loading plug-ins, browsing the database, managing users, projects, media, assets, and so on. It also provides direct access to more sophisticated Toxik internals, including control and renderer. Scripts can be saved and executed.

Toxik Configuration

You will install Toxik on one workstation only.

System Requirements

Toxik can be supported by various CPU architectures and operating systems—see [“System Requirements”](#) on page 40.

Playback speed in Toxik depends largely upon the ability of your local cache (attached storage) to deliver frame data at a high rate—see [“Bandwidth Requirements”](#) on page 42, and [“Supported Graphics Cards”](#) on page 41.

File Requirements

The Toxik Application executable file, and Release Notes.

- Autodesk Toxik 2009 Release Notes (pdf)
- Autodesk Toxik 2009 Installer: *Autodesk_Toxik_2009_xxbit.exe*

Install the creative application—see [“Installing the Software”](#) on page 21.

If you have a License Server you will need the file.

- Autodesk license server file: *Autodesk_License_Server_10.8.2.1_xxbit.exe*

Install the license server—see [“Installing the License Server”](#) on page 13.

NOTE: xx indicates either a 32 or 64 bit operating system.

Documentation and Training

Information and documents in PDF format are available at www.autodesk.com/toxik-documentation.

Document	PDF	Online Help
Autodesk Toxik 2009 Release Notes	Yes	No
Autodesk Toxik 2009 User's Guide	Yes	No
Training	Format	
Autodesk Toxik New Features Videos	Macromedia Flash	

Accessing Online Help

Autodesk provides documentation in an HTML help system displayed in a Web browser. The help is automatically installed with the software.

To start help:

- Do one of the following:
 - From the Toxik menu, choose Help > Toxik Help.
 - From the Windows taskbar, choose Start > Programs > Autodesk > Autodesk Toxik 2009 > Toxik Documentation > Online Help.

The Help appears in a browser window.

Release Notes

Release notes contain important information, including late-breaking information on Autodesk Toxik. Be sure to read the release notes before installing or using Toxik.

Documentation Conventions

The following conventions are used in this guide.

Notation	Usage
c:\Program Files\Autodesk	Commands, Windows file names, and directories are written in courier bold.
<version#>	Variables, such as system-specific information, are enclosed in angle brackets and written in courier italics.

Contacting Technical Support

If you need more information, contact Technical Support at: www.autodesk.com/subscriptionlogin.

Downloading the Distribution



Summary

Overview	5
Downloading the Distribution	5

Overview

This chapter describes what to do and where to find help after you have downloaded the distribution files from the Autodesk Subscription Center.

NOTE: It will be helpful to have a utility on-hand to verify that the files downloaded without corruption. The distribution provides message digest (.md5) files for this purpose.

Downloading the Distribution

When you purchase Toxik 2009, you will be advised either on your invoice or by email of your account user name and password, which will allow you to login to the Autodesk Subscription Center at www.autodesk.com/subscriptionlogin.

Once you have entered the Autodesk Subscription Center, you can download the executable files; Toxik 2009 Creative Application, and License Server file. You can store the files in your `<temp_dir>` folder.

To download the distribution from the Autodesk Subscription Center:

1. To access the Autodesk Subscription Center go to this link, www.autodesk.com/subscriptionlogin.
2. Login to the Autodesk Subscription Center.

3. Locate the Toxik application, download the distribution and save it in a temporary folder. The distribution consists of the following files:

File	Contents
Autodesk_Toxik_2009_xxbit.exe	Interactive creative application where you create your compositions.
Autodesk_License_Server_10.8.2.1_xxbit.exe	License Server program (optional).
.md5 files	Message Digest files. Ensures the .zip files were not corrupted during the download.

4. Using an appropriate utility, ensure data integrity by creating an MD5 “checksum” for each downloaded file and compare it to the message digest value in the corresponding file provided.

3

Licensing

Summary

Overview	7
Technical Assistance	8
Installing the Standalone License	10
Installing the License Server	13

Overview

This chapter explains the licensing methodology for Toxik. You need a Toxik License to activate the Toxik 2009 Creative Application. There are three types of licenses: Trial, Standalone, and Network.

Trial License

If you install a 30 day trial license, at the end of the trial, Toxik must be activated with a valid serial number or you must use a Network License Manger.

Standalone License

If you install a standalone license then you must enter a valid serial number to start Toxik. You will need to register your copy of Toxik. If your workflow is on a standalone workstation, then you will store the license on the same workstation as the Toxik Creative Application.

Network License

Your license server must be properly setup before installing Toxik. However, the license server is optional, and usually installed on a dedicated network computer.

Technical Assistance

If you have any licensing questions or issues, please address them as follows:

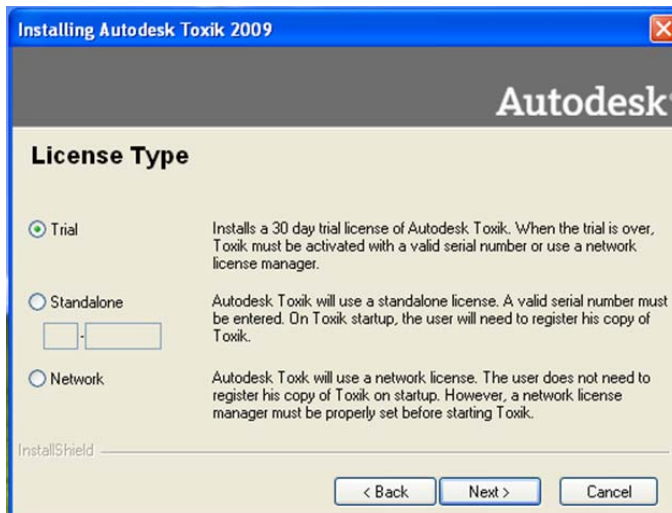
	In North America	Outside North America
Hours	Monday to Friday 8 a.m.–8 p.m. EST (excluding certain holidays).	
Phone	Toll-free: 1.800.925.6442 Direct dial: +1.514.954.7199	Direct dial: +1 514.954.7199
E-mail	me.licensing@autodesk.com	
Licensing Fax	+1 514.954.7254	

Installing the Trial Mode

Running the trial

If you want to evaluate the Toxik Creative Application, then you may install the license for 30 days. Once the 30 days are over you will not be able to run the Toxik Creative Application unless you purchase the product and provide a valid serial number. This procedure describes what you have to do.

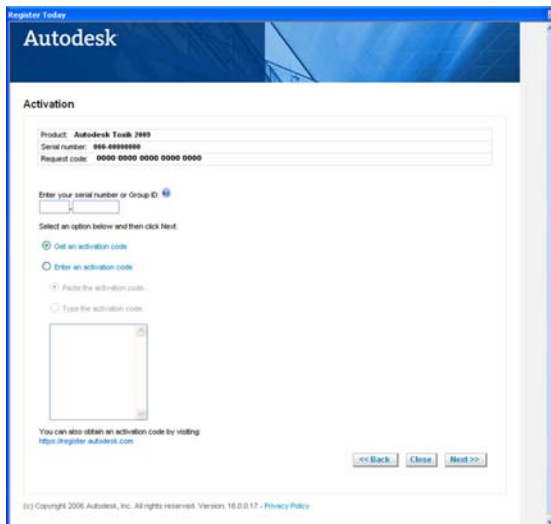
1. During the installation of the Toxik Creative Application, a License Type dialog box will appear. Select the Trial radio button. Click Next to continue with the installation.



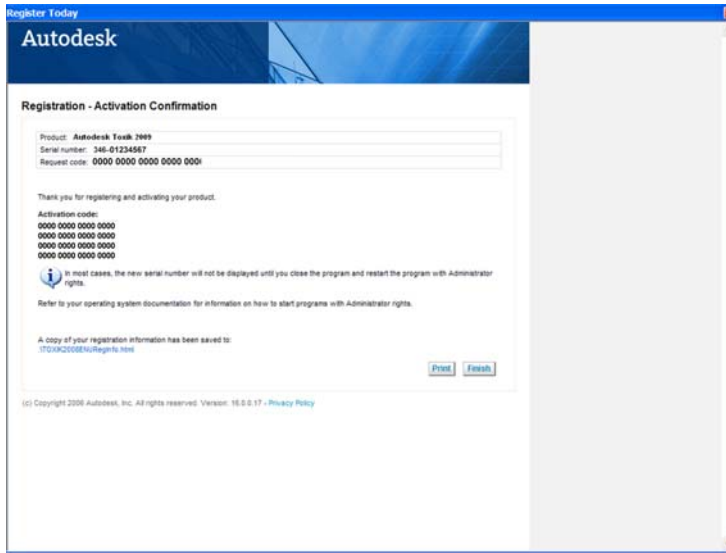
2. Continue with the installation —see [“Installing Toxik”](#) on page 22.
3. When you have finished installing Toxik you will start the application for the first time. You will get a reminder screen advising you of how many days you have left for your trial. You may run the product until the 30 days has expired. Should you want to continue using Toxik you will need to activate it. Click Next.



4. You will be connected to Register Today where you must enter a valid serial number. This number will be provided to you when you purchase Toxik from your reseller or Autodesk Licensing Authority. Click Next.



5. You will receive your confirmation dialog box informing you of your activation code. You may print the information for future reference. Click Finish to complete the license process.

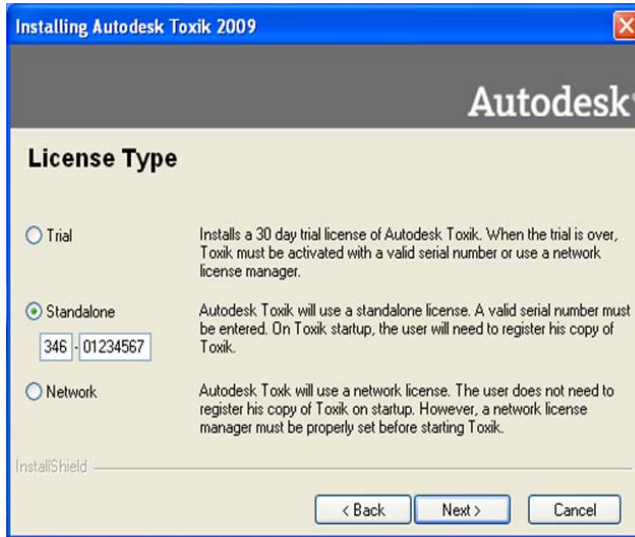


Installing the Standalone License

If you install the standalone license on your computer, the following procedure describes what you have to do.

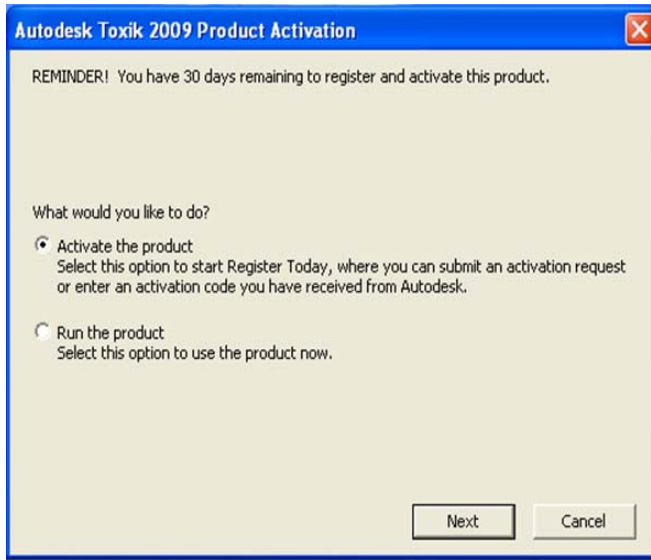
To install the standalone license:

1. During the installation of the Toxik Creative Application a License Type dialog box will appear. Select the Standalone radio button, and enter your unique serial number. Click Next to continue with the installation.

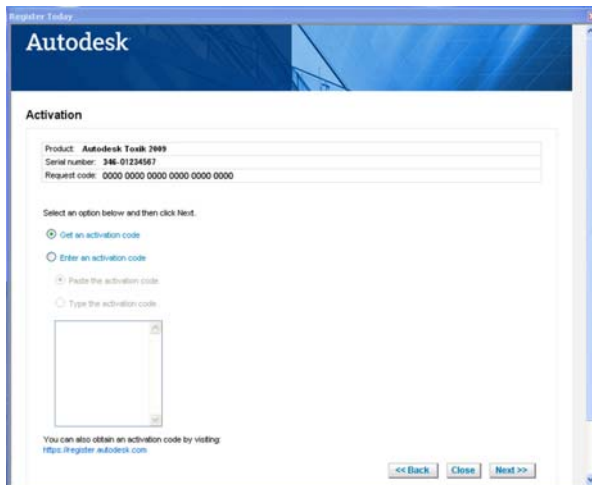


2. Continue with the installation —see [“Installing Toxik”](#) on page 22.

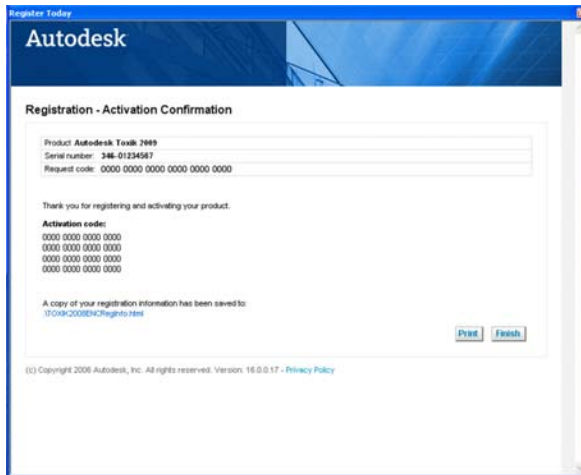
- When you have finished installing Toxik you will start the application for the first time. You will get a reminder screen. By default Activate the product is selected. Click Next.



- To obtain an activation code from Register Today, click Next.
If you already have an activation code provided by your reseller or Autodesk Licensing Authority click the Enter an activation code radio button to manually enter it., Click Next.



5. You will receive a confirmation dialog that Toxik has been registered, click Finish.



Installing the License Server

If you are installing the Autodesk license server you should install it before you install the Toxik 2009 application. This procedure describes what you have to do.

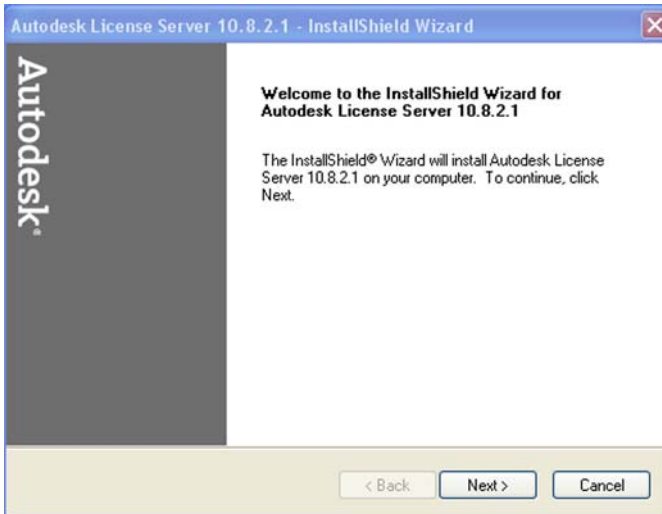
NOTE: To install the license server for Windows Vista, you will follow the steps below, but because of Vista's new security feature, the license server service will not start automatically, even when the installation is successful. You can launch the license server manually by executing the following command prompt: `lmgrd -z -c "<Path_To_License_Files>"`

To install the license server:

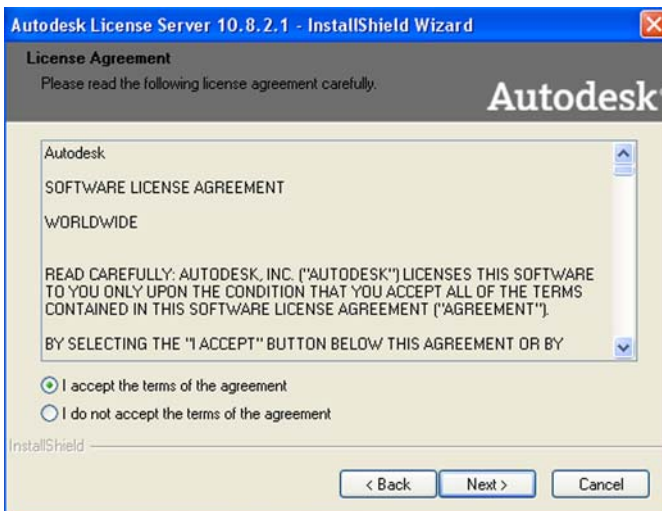
1. Log on as System Administrator, and close all running programs.
2. Navigate to the temporary folder where you downloaded the Autodesk auto-extracting license file

(`<temp_dir>\Autodesk_License_Server_10.8.2.1_xxbit.exe`) and double-click the file.

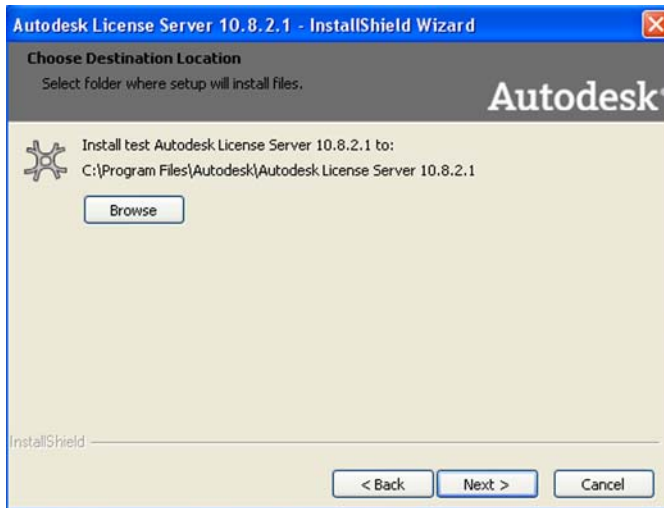
The installation wizard is started and a welcome dialog appears. Click Next to continue with the installation.



3. You are asked to accept the non-disclosure agreement, click Agree, then Next to proceed with the installation.



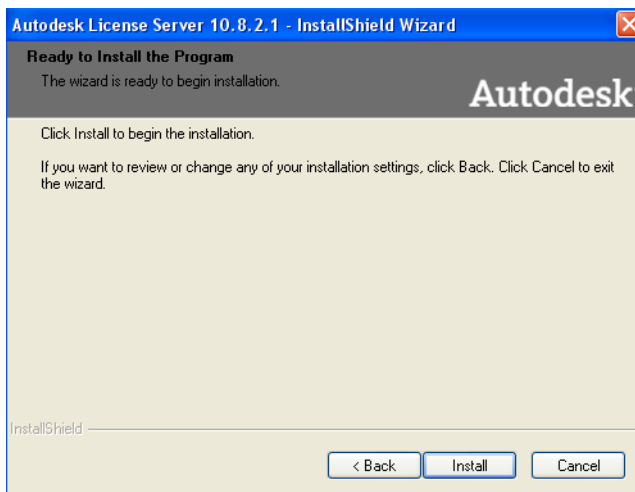
4. In the Choose Destination Location dialog, accept the default destination or use the Browse button to navigate to a new folder where the software will be installed. Click Next to continue with the installation.



By default, the Autodesk license server is installed in the following folder:

c:\Program Files\Autodesk\Autodesk License Server 10.8.2.1

5. When the confirmation dialog appears, click Install.

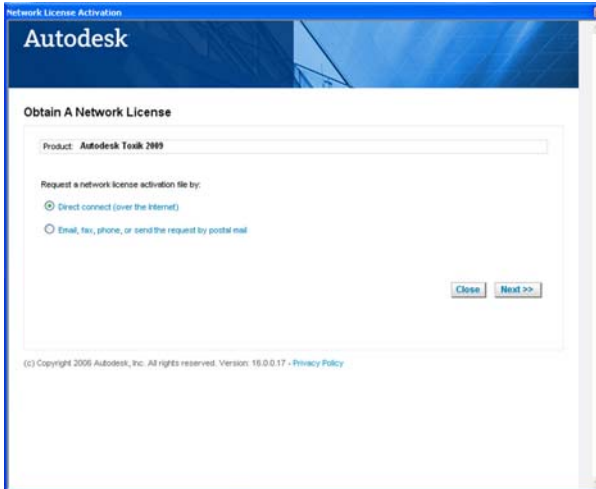


6. When complete, the license information dialog appears.



- If you don't have a valid license file click Launch NLA (Network License Activation) to obtain a Network License file, then proceed with the Step 7.
- If you already have a license file you can Browse for it, click open in the browser to provide the file path, then click Next. You will go straight to Step 13 to Finish your license installation.

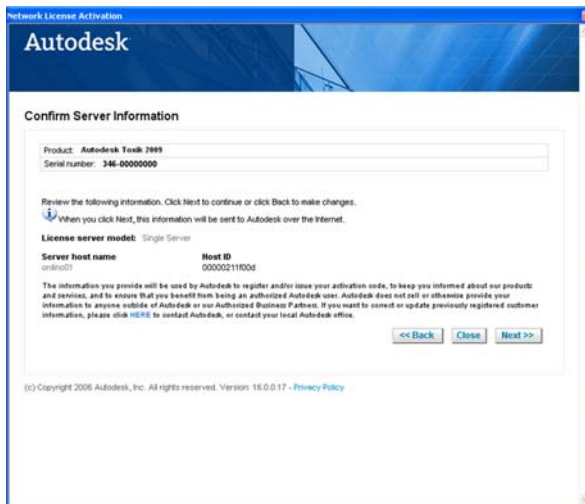
7. If you have chosen to Launch NLA, you have a choice of two radio buttons.
 - Direct connect over the Internet is the default radio button. Click Next to obtain the Network License file.
 - However, if you do not have an Internet connection you can obtain your network license by post, email, fax or phone. Click the radio button and follow the procedure.



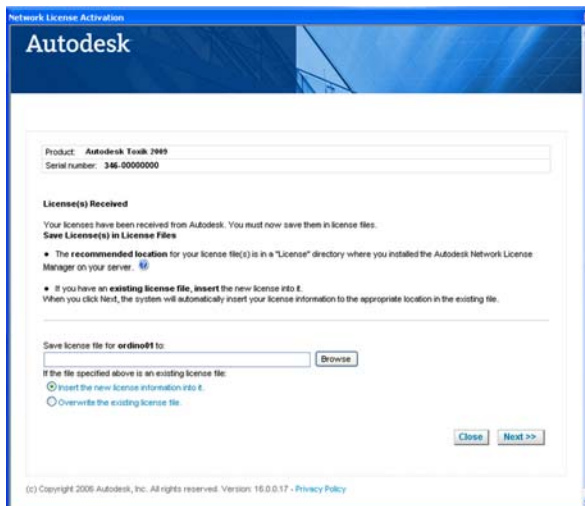
8. Enter your unique serial number provided by either the reseller or the Autodesk licensing authority, followed by your server host name, then click Lookup to obtain your host ID. The Single Server radio button is set by default. Click Next to continue.



9. The confirm server dialog box appears. Confirm that your information is correct, then click Next.

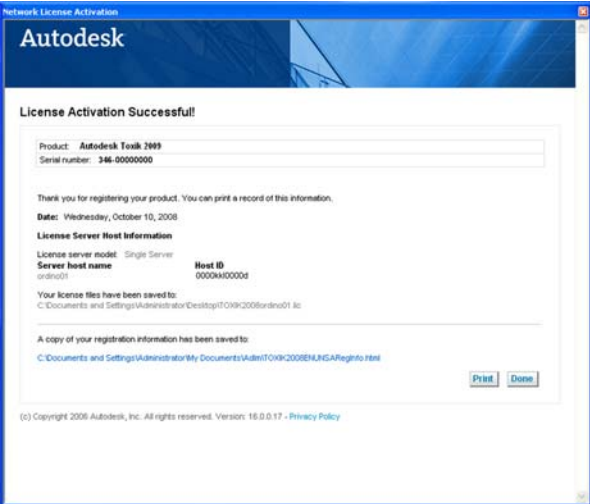


10. The dialog box confirms your license was activated. Click Browse to select the path where the license file will be saved. Click Next.

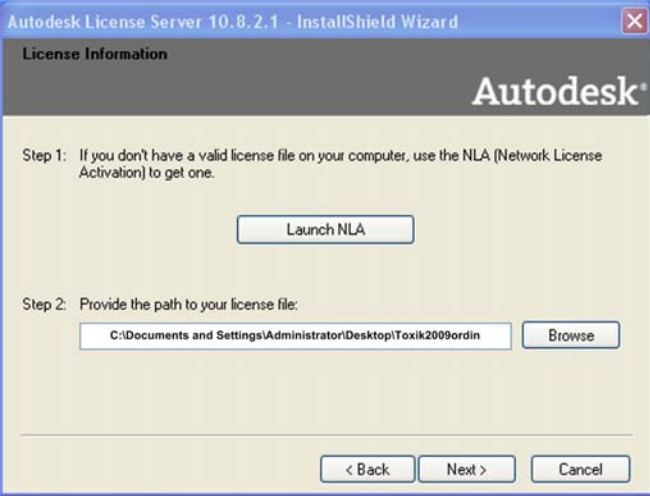


NOTE: Keep your license file in a safe place as you may need it to install or reinstall your license server.

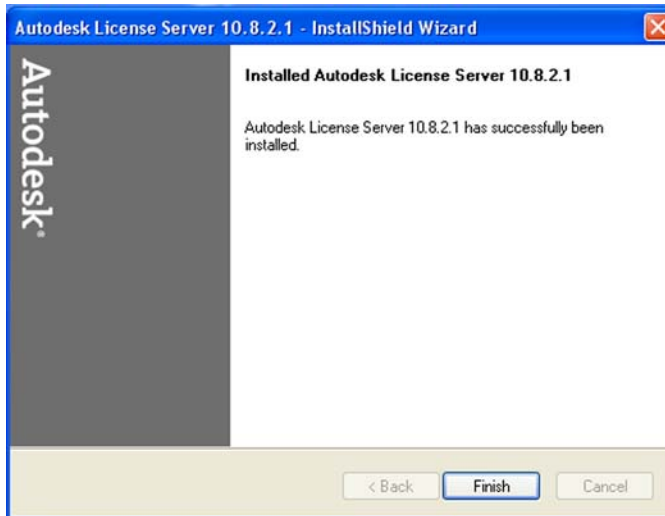
- 11. You will be informed that your license activation was successful. You can print your information for future reference. Click Done to proceed with the installation.



- 12. Browse for the license file you have just saved in Step 10, then click Next.



13. The license server will now start. When complete, a confirmation dialog appears. Click Finish.



NOTE: The license is written to a file (**toxik.lic**). By default this is located in **c:\Program Files\Autodesk\Autodesk License Server 10.8.2.1\licenses**.

4 Installing Toxik

Summary

Overview	21
Before You Begin	21
Installing Toxik	22

Overview

You are now ready to install the Toxik 2009 creative application. This chapter describes each stage of the installation. It begins by presenting some decisions you must make during the installation, and helps you prepare for configuring the software. Next, it presents the step-by-step procedure for installing the software.

Before You Begin

Before attempting to install the software, it is useful to have an overview of the installation process, and to know what will be required of you during the install. You must choose between one of two setup types, license type, and set the Media Cache size.

NOTE: You must have system administrator privileges to install Toxik 2009.

Installing the Software

When you run the installation wizard, you will be asked to choose from two main setup options. You can install the Toxik Creative Application, or Render Node.

Toxik Creative Application

Installs the runtime application only. This includes the Toxik (core application), plug-ins (browsers, modules, tools, and views), Python scripting, and fonts.

Toxik Render Node

Installs the rendering feature only which allows you to use a background rendering software like Autodesk Backburner to complete your workflow.

NOTE: It is strongly recommended that the Autodesk Toxik media cache have a separate partition, and that the partition resides on a disk other than the operating system, ideally on a RAID device. For each minute of footage at 2K RGB using 16 bits @ 24fps depth, you will require 40 GB of media cache space. The Toxik media cache requires a minimum of 10 GB, while an optimal media cache size is suggested at 200GB. However depending on the project, you may want to consider a media cache size of 1 terabyte for a high-performance configuration.

Installing Toxik

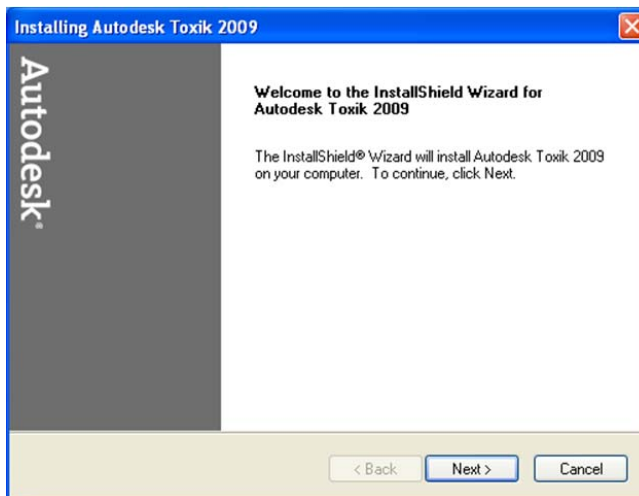
Installation of the Toxik Creative Application is accomplished in just several steps using the installation wizard.

To install Toxik:

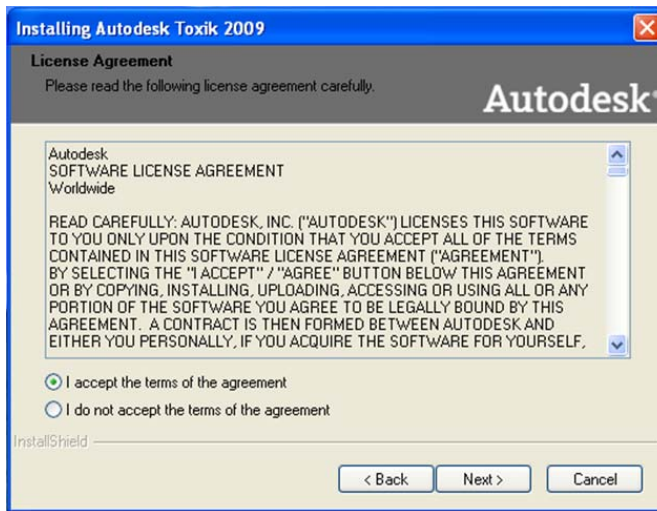
1. Log on as System Administrator and close all running programs.
2. Navigate to the folder where you downloaded the Toxik 2009 executable file (`<temp_dir>\Autodesk_Toxik_2009_xxbit.exe`) and double-click on the file.

The installation wizard is launched, and a welcome dialog appears.

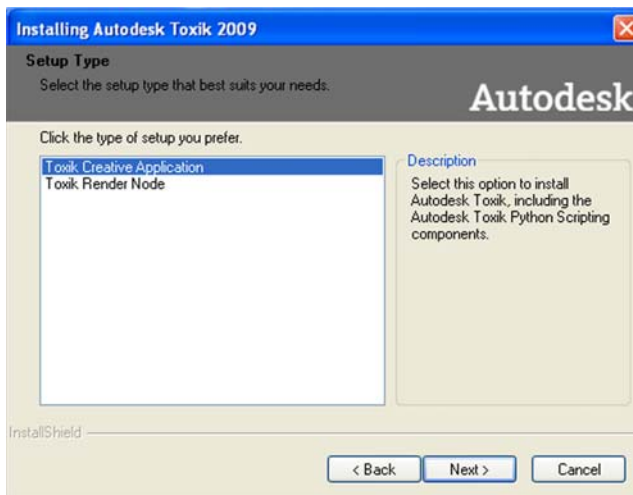
Click Next to continue with the installation.



- You are asked to accept the terms of the non-disclosure agreement, click Agree then Next to proceed with the installation.

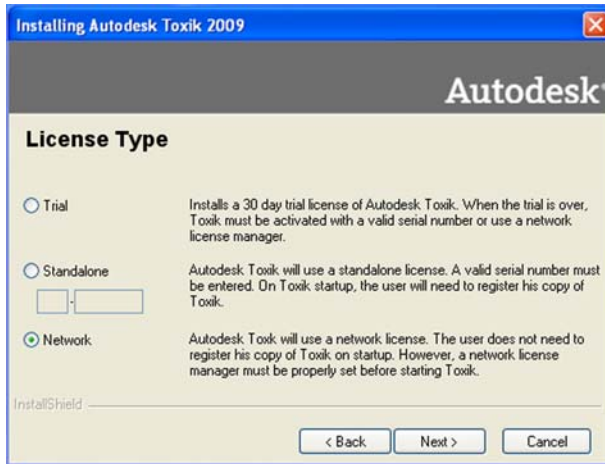


- In the Setup Type dialog select one of the following options:
 - Toxik Creative Application*. Installs the Toxik 2009 runtime application, including the Python Scripting components.
 - Toxik Render Node*. Installs the Toxik 2009 render node option on the workstation that will be used only as a render node.



Click Next to continue to install the Toxik Creative Application.

5. You are given a choice of three license type options, select the button of your choice.



To get more information about the three license types refer to the Licensing chapter.

- Trial License—see [Chapter 3, “Installing the Trial Mode,”](#) on page 8
- Standalone License—see [Chapter 3, “Installing the Standalone License,”](#) on page 10
- Network License—see [Chapter 3, “Installing the License Server,”](#) on page 13

Click Next to continue.

6. In the Choose Destination Location dialog, accept the default directory or use the Browse button to navigate to a new directory where the software will be installed.

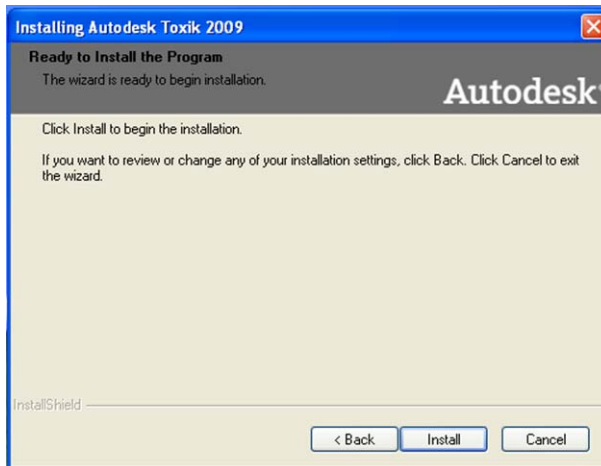
By default, Toxik is installed in the following directory:

c:\Program Files\Autodesk\Autodesk Toxik 2009

Click Next to continue.



7. You are prompted to install the Toxik 2009 Creative Application. Click Install to continue.



The installer will check the Setup Status for your workstation, then complete the installation.

8. Toxik will install Microsoft Visual C++ 2005 Redistributable then direct you to the Ready to Install dialog box.

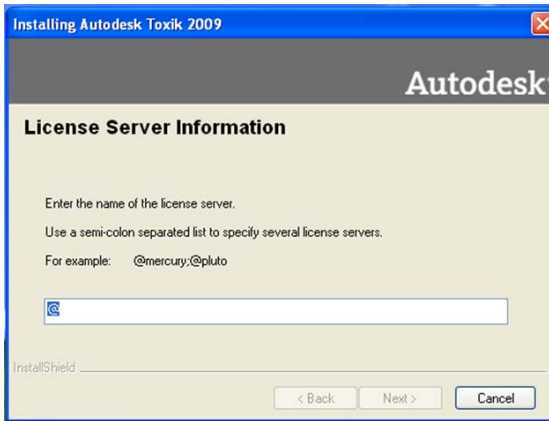


9. If you have selected the **Trial** or **Standalone** License Type, go to Step 15.

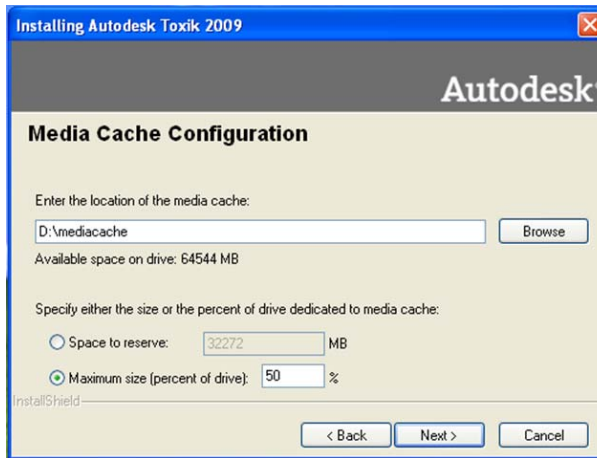
If you selected the **Network** option in Step 5, you are prompted to enter the name of the License Server in the License Server Information dialog. Enter the name of the machine where you installed the license server, for example, **@machine_name**.

Be sure to prepend the machine name with the commercial at symbol (@).

Click Next to continue with the installation.



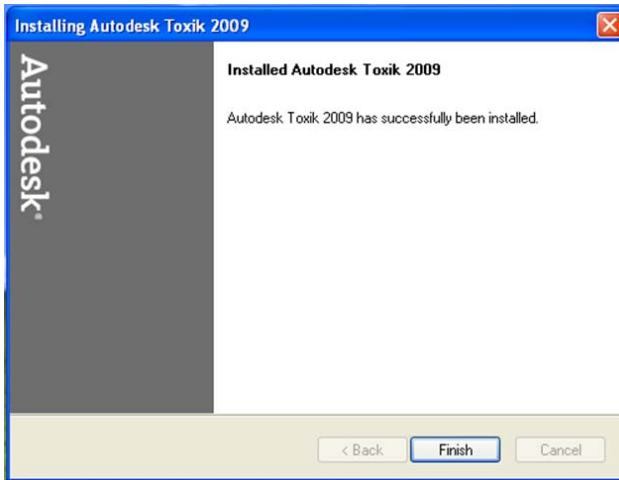
10. The Media Cache Configuration dialog appears.
In the dialog, enter the location of the media cache.



You are prompted to specify the size or percent of drive dedicated to the media cache. Generally speaking, the larger the media cache the better, since this reduces the number of reads and writes to the external storage. For best results, put the media cache on the local disk with the most available space. Preferably on a different drive to where the Toxik 2009 Creative Application is installed.

Click Next to continue.

11. The information is processed and a dialog appears announcing the success and completion of the installation.



Click Finish to complete the installation.

NOTE: Any settings are stored in the program file (toxik.ini) Configuration Setting. The location for this file is C:\Program Files\Autodesk\Autodesk Toxik 2009\etc.

5 Starting Toxik

Summary

[Starting Toxik](#) 29

Starting Toxik

Before you can do any work using the Toxik 2009 application, you'll have to create either a new project, choose an existing project or open a recent project. For detailed information on using Toxik, refer to the *Toxik 2009 User's Guide* in the online help.

To start Toxik:

1. In the Windows Start menu, choose Programs > Autodesk > Autodesk Toxik 2009 > Toxik.

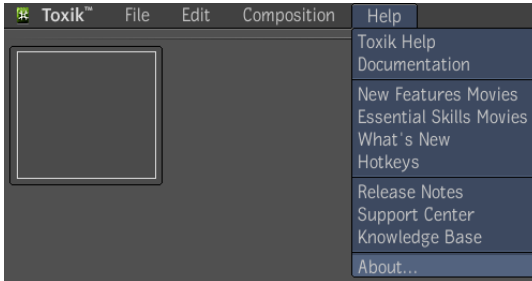
OR

In Windows Explorer, navigate to Program Files > Autodesk > Autodesk Toxik 2009 > Program and double-click *toxik.exe*.

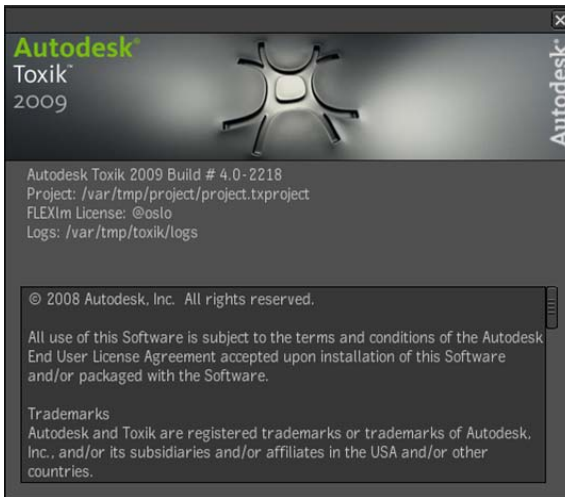
The Toxik screen appears.



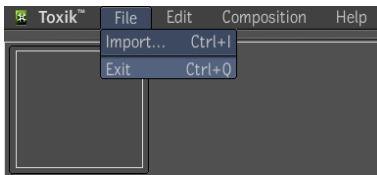
2. In the Toxik screen, create a project, select an existing project, or open a recent project, and click Open.
3. To check the software version and build number, select Help > About from the menu bar.



The software version and build number should be Autodesk Toxik 2009 Build #2218.



4. To exit the software, select File > Exit or press **CTRL+Q**.



Uninstalling Toxik

Summary

Overview	31
Uninstalling Toxik	31
Uninstalling the License Server	33

Overview

This chapter describes what to do, if you decide to uninstall the Toxik 2009 Creative Application and its components, and the Autodesk License Server.

NOTE: If you already have another Autodesk product installed on your network that uses the same license management technology, you should not uninstall the Autodesk License Server.

Uninstalling Toxik

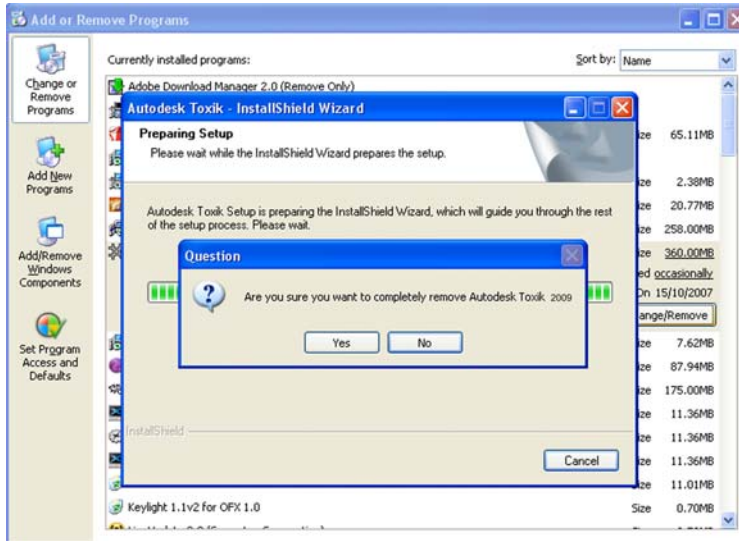
Uninstalling Toxik 2009 removes all of the Autodesk Toxik 2009 files in the Autodesk Program Folder. It also resets Toxik 2009 entries in the system registry, and uninstalls all Toxik 2009 services. It does not remove user and project preferences, projects, compositions, or remove media.

To uninstall Toxik:

1. Choose Start > Settings > Control Panel.
The Control Panel appears.
2. Double-click Add or Remove Programs.
The Add or Remove Programs dialog appears.

3. Select Autodesk Toxik 2009, and click Remove.

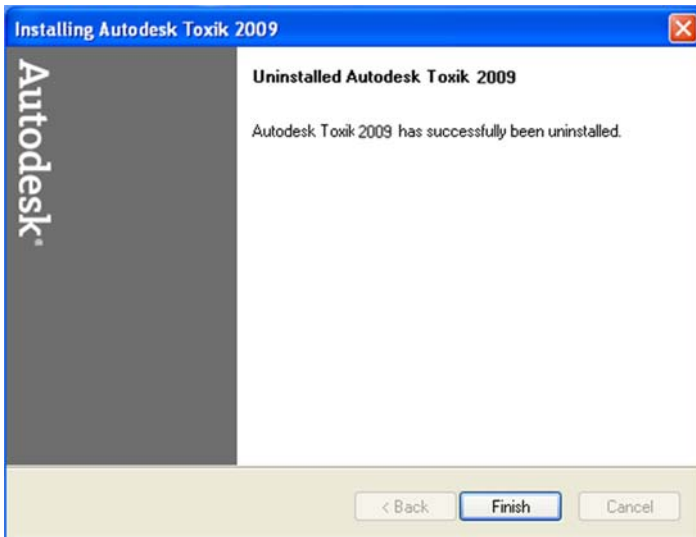
A confirmation dialog appears. Confirm your choice by clicking Yes.



4. Toxik will be removed from your system.

NOTE: A message may appear asking if you would like to remove “private files” contained in the Toxik directory. This message refers to files that were not created by the installation wizard, such as log files. Click Yes to remove the files.

5. Click Finish to uninstall the application.



The Toxik Creative Application has been uninstalled.

Uninstalling the License Server

Uninstalling the License Server removes all the files in the License Server program folder. You can optionally choose to leave the license file (**toxik.lic**) itself. It also resets the License Server entries in the system registry and uninstalls all License Server services.

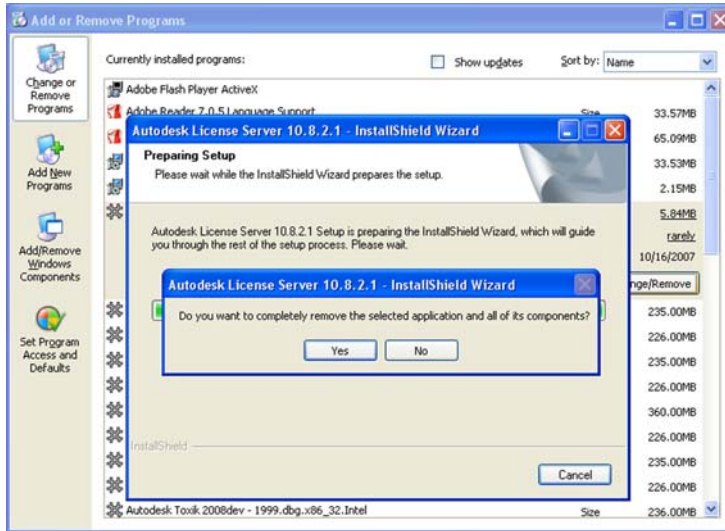
To uninstall the License Server

1. Choose Start > Settings > Control Panel.
The Control Panel appears.
2. Double-click Add or Remove Programs.
The Add or Remove Programs dialog appears.

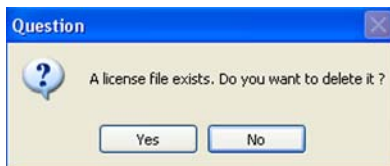
3. Select Autodesk License Server 10.8.2.1 and click Remove.

A confirmation dialog appears.

Confirm your choice by clicking Yes.

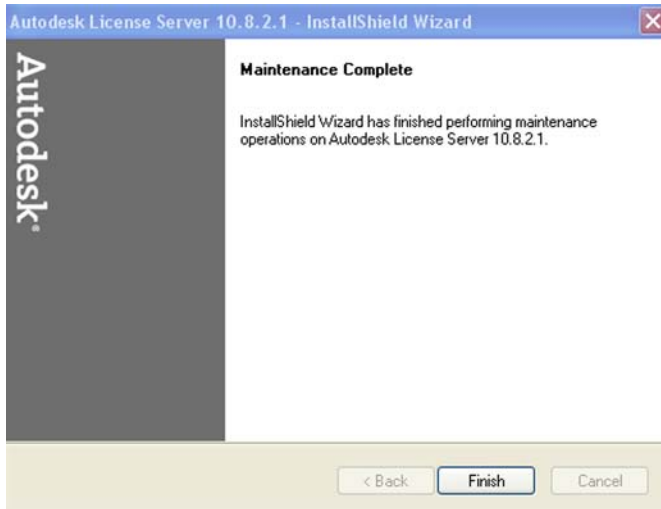


4. A dialog appears asking if you want to remove the license file, or leave it. Confirm your choice by clicking Yes.



NOTE: If you have written your license file in a safe place, you can safely remove it; otherwise retain the file for future use.

5. Once complete, click Finish to complete the uninstall procedure. You must restart your computer before reinstalling the Toxik License Server.



6 Uninstalling Toxik



Setting Up a Broadcast Monitor

Summary

Overview	37
Setting Up a Broadcast Monitor	37

Overview

This chapter describes how to set up a broadcast monitor for Toxik 2009.

Setting Up a Broadcast Monitor

If your system has the appropriate hardware, you can preview your work on a broadcast video monitor. Video previewing is available for Toxik on Windows 32-bit. Autodesk Toxik 2009 supports the AJA Xena 2K and 2Ke boards. You will need to obtain and install the Xena driver, and modify the `toxik.ini` file to enable video previewing. For more information on the Xena boards, see www.aja.com.

To install the Xena driver:

1. Open a web browser and go to: http://www.aja.com/html/support_xena2k_swd.html.
2. Download the appropriate driver for Windows XP 32-bit and follow the instructions for installing it.

To modify the `toxik.ini` file:

1. In a browser window, open the following folder: `C:\Program Files\Autodesk\Autodesk Toxik 2009\etc`.
2. In the `\etc` folder, double-click the `toxik.ini` file.
3. Enable the video previewing by removing the “#” symbol which appears in front of:
`toxik::videoPreview::pluginsDir C:/Program Files/AJA/Windows/Plugins/Combustion/4.0`

4. Save the changes you made in the `toxik.ini` file.

For information on previewing your work, see the *Managing Projects* chapter in the Toxik online help.

Appendix A

Summary

Overview	39
System Requirements	40
Supported Graphics Cards	41
Bandwidth Requirements	42

Overview

Appendix A contains the Toxik 2009 system requirements, supported graphics cards and drivers, and bandwidth requirements, allowed by Toxik.

System Requirements

Toxik can be supported with the following system requirements.

Playback speed in Toxik depends largely upon the ability of your local cache (attached storage) to deliver frame data at a high rate—see [“Bandwidth Requirements”](#) on page 42 and [“Supported Graphics Cards”](#) on page 41.

CPU Architecture

CPU	Autodesk License Server	Autodesk Toxik
Intel® Pentium IV™ single or dual processor	o	o
Intel® Xeon® EMT-64 single or dual processor	o	o
Intel Core™ Solo	o	o
Intel Core 2 Duo	o	o
AMD Athlon™ 64 FX	o	o
AMD Athlon 64 X2 Dual Core	o	o
AMD Athlon Multi-core	o	o

Operating System

OS	Autodesk License Server	Autodesk Toxik
Windows Vista 32 bits	o	o
Windows Vista 64bits	o	o
Windows® XP Pro	o	o
Windows XP 64 bits	o	o
Red Hat Enterprise Linux 5, 64 bits	o	o
Red Hat Enterprise Linux WS4, Update 6, 64 bits	o	o
Fedora 8, 64 bits	o	o

Autodesk Toxik Creative and Render Requirements

- 1 GB RAM minimum or more
- CPU 64 bit processor minimum requirement should support 64 bit SSE3 (Streaming SIMD Extensions 3)

- Supported graphics cards—see [“Supported Graphics Cards”](#) on page 41
- Three-button mouse or tablet
- Full keyboard
- Monitor with minimum resolution of 1600 x 1200 (recommended resolution 1920 x 1200)
- Network interface
- Media cache requirements:
 - 10 GB minimum, 200 GB recommended
 - HDD: IDE, SATA, SATA 2, SAS, SCSI
- 375 MB disk space for Autodesk Toxik Creative application
- Web browser with JavaScript and frames enabled (for viewing online help), Firefox is not supported as this creates errors when registering
- Adobe® Acrobat Reader (for viewing and printing documentation)

NOTE: Autodesk Toxik does not offer a network installation option.

Supported Graphics Cards

Toxik supports all the high-end Nvidia Quadro FX series graphic cards.

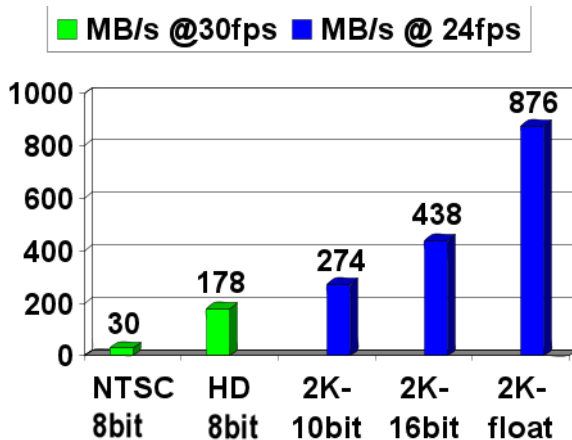
Graphics Card	Windows Driver	Linux Driver
NVIDIA Quadro FX5600	169.96	173.14.12
NVIDIA Quadro FX4600	169.96	173.14.12
NVIDIA Quadro FX4500	169.96	173.14.12
NVIDIA Quadro FX4400	169.96	173.14.12
NVIDIA Quadro FX4000	169.96	173.14.12
NVIDIA Quadro FX3700	169.96	173.14.12
NVIDIA Quadro FX3500	169.96	173.14.12
NVIDIA Quadro FX3450	169.96	173.14.12
NVIDIA Quadro FX3400	169.96	173.14.12
NVIDIA Quadro FX3000	169.96	173.14.12
NVIDIA Quadro FX2000	169.96	173.14.12
NVIDIA Quadro FX1400	169.96	173.14.12
NVIDIA Quadro FX1300	169.96	173.14.12
NVIDIA Quadro FX1100	169.96	173.14.12
NVIDIA Quadro FX1000	169.96	173.14.12
NVIDIA Quadro FX700	169.96	173.14.12

Graphics Card	Windows Driver	Linux Driver
NVIDIA Quadro FX500	169.96	173.14.12
ATI Fire GL V3600	8.443.1	---
ATI Fire GL V7350	8.443.1	---
ATI Fire GL V5600	8.443.1	---
ATI Fire GL V7600	8.443.1	---
ATI Fire GL V8600	8.443.1	---

Bandwidth Requirements

The following chart shows the bandwidth requirements in megabytes per second (MB/s) for playback of media of different formats. To ensure fast playback in Toxik, your attached storage, the local cache, must meet or exceed the bandwidth requirements of the desired format. Otherwise, Toxik will not receive the frames quickly enough. In the chart, “2K” refers to a full-aperture film image; that is, a 2048 x 1556 pixel RGB image.

NOTE: Toxik only stores images at three different pixel depths: 8-bit (int), 16-bit (half-float) and 32-bit (float). Any other formats are converted to the optimal format without losing any precision.



To calculate the bandwidth requirements for other formats, use the following formula:

$$\text{Bandwidth (MB/second)} = \frac{\text{horizontal res.} \times \text{vert res.} \times \text{frames/second} \times \text{channels/pixel} \times \text{bytes/channel}}{1024 \times 1024}$$

For example, a “2K” 16-bit, 35mm Full Aperture 2K image results in the following calculation:

$$\text{Bandwidth (MB/second)} = \frac{2048 \times 1556 \times 24 \times 3 \times 2}{1024 \times 1024} = 437.63$$

index

A

about 1
audience 1

B

bandwidth requirements 42

C

configurations, Toxik 2
creative system requirements 40

D

distribution files 5
documentation
 conventions 4
 online help, accessing 3
 release notes 4
 subscription center 3
downloading files 5
downloading the distribution
 about 5
drivers, graphics cards 41

F

fast track videos
 training 3

G

graphic card drivers 41

I

installation

about 1

audience 1
 Toxik components 2

installing

 standalone license 10, 13
 trial license 8

installing licence

 about 7

L

license or license server
 technical assistance 8

license server

 about 2

 uninstalling procedure 33

N

network license

 about 8

NVIDIA Quadro FX drivers 41

P

portable license utility

 about 2

Python scripting

 about 2

Q

Quadro FX drivers, NVIDIA 41

R

real-time playback 40

render system requirements 40

requirements, system 2, 40

S

scripting, Python 2

standalone license

about 7

installing 10, 13

Subscription Center 5

subscription center, location 4

Subscription Center

file requirements 3

system requirements 2, 40

CPU Architecture 40

operating system 40

T

technical support, contacting 4

Toxik components

about 2

creative application 2

creative system requirements 40

graphics cards 41

license server 2

network license 8

portable license utility 2

Python scripting 2

real-time playback 2

render system requirements 40

standalone license 7

system requirements 2, 40

trial license 7

typical configurations 2

Toxik creative application

about 21

bandwidth requirements 42

installation procedure 21, 22

installation wizard 21

starting 29

uninstalling 31

Toxik render node

about 22

trial license

about 7

installing 8

training

fast track videos 3

U

uninstalling

about 31, 37

license server 33

Toxik creative application 31