

AUTODESK®
TOXIK™ 
2009
Linux

Installation Guide

Autodesk®



© 2009 Autodesk, Inc. All rights reserved. Except as otherwise permitted by Autodesk, Inc., this publication, or parts thereof, may not be reproduced in any form, by any method, for any purpose.

Certain materials included in this publication are reprinted with the permission of the copyright holder.

Portions relating to Berkeley DB software Copyright ©1990-2002, Sleepycat Software. All rights reserved. Redistribution and use in source and binary forms, with or without modification, are permitted provided that the following conditions are met: 1. Redistributions of source code must retain the above copyright notice, this list of conditions and the following disclaimer. 2. Redistributions in binary form must reproduce the above copyright notice, this list of conditions and the following disclaimer in the documentation and/or other materials provided with the distribution. 3. Redistributions in any form must be accompanied by information on how to obtain complete source code for the DB software and any accompanying software that uses the DB software. The source code must either be included in the distribution or be available for no more than the cost of distribution plus a nominal fee, and must be freely redistributable under reasonable conditions. For an executable file, complete source code means the source code for all modules it contains. It does not include source code for modules or files that typically accompany the major components of the operating system on which the executable file runs. THIS SOFTWARE IS PROVIDED BY SLEEPYCAT SOFTWARE "AS IS" AND ANY EXPRESS OR IMPLIED WARRANTIES, INCLUDING, BUT NOT LIMITED TO, THE IMPLIED WARRANTIES OF MERCHANTABILITY, FITNESS FOR A PARTICULAR PURPOSE, OR NON-INFRINGEMENT, ARE DISCLAIMED. IN NO EVENT SHALL SLEEPYCAT SOFTWARE BE LIABLE FOR ANY DIRECT, INDIRECT, INCIDENTAL, SPECIAL, EXEMPLARY, OR CONSEQUENTIAL DAMAGES (INCLUDING, BUT NOT LIMITED TO, PROCUREMENT OF SUBSTITUTE GOODS OR SERVICES; LOSS OF USE, DATA, OR PROFITS; OR BUSINESS INTERRUPTION) HOWEVER CAUSED AND ON ANY THEORY OF LIABILITY, WHETHER IN CONTRACT, STRICT LIABILITY, OR TORT (INCLUDING NEGLIGENCE OR OTHERWISE) ARISING IN ANY WAY OUT OF THE USE OF THIS SOFTWARE, EVEN IF ADVISED OF THE POSSIBILITY OF SUCH DAMAGE.

Portions relating to Berkeley DB software Copyright © 1990, 1993, 1994, 1995, The Regents of the University of California. All rights reserved. Redistribution and use in source and binary forms, with or without modification, are permitted provided that the following conditions are met: 1. Redistributions of source code must retain the above copyright notice, this list of conditions and the following disclaimer. 2. Redistributions in binary form must reproduce the above copyright notice, this list of conditions and the following disclaimer in the documentation and/or other materials provided with the distribution. 3. Neither the name of the University nor the names of its contributors may be used to endorse or promote products derived from this software without specific prior written permission. THIS SOFTWARE IS PROVIDED BY THE REGENTS AND CONTRIBUTORS "AS IS" AND ANY EXPRESS OR IMPLIED WARRANTIES, INCLUDING, BUT NOT LIMITED TO, THE IMPLIED WARRANTIES OF MERCHANTABILITY AND FITNESS FOR A PARTICULAR PURPOSE ARE DISCLAIMED. IN NO EVENT SHALL THE REGENTS OR CONTRIBUTORS BE LIABLE FOR ANY DIRECT, INDIRECT, INCIDENTAL, SPECIAL, EXEMPLARY, OR CONSEQUENTIAL DAMAGES (INCLUDING, BUT NOT LIMITED TO, PROCUREMENT OF SUBSTITUTE GOODS OR SERVICES; LOSS OF USE, DATA, OR PROFITS; OR BUSINESS INTERRUPTION) HOWEVER CAUSED AND ON ANY THEORY OF LIABILITY, WHETHER IN CONTRACT, STRICT LIABILITY, OR TORT (INCLUDING NEGLIGENCE OR OTHERWISE) ARISING IN ANY WAY OUT OF THE USE OF THIS SOFTWARE, EVEN IF ADVISED OF THE POSSIBILITY OF SUCH DAMAGE.

Portions relating to Berkeley DB software Copyright ©1995, 1996, The President and Fellows of Harvard University. All rights reserved. Redistribution and use in source and binary forms, with or without modification, are permitted provided that the following conditions are met: 1. Redistributions of source code must retain the above copyright notice, this list of conditions and the following disclaimer. 2. Redistributions in binary form must reproduce the above copyright notice, this list of conditions and the following disclaimer in the documentation and/or other materials provided with the distribution. 3. Neither the name of the University nor the names of its contributors may be used to endorse or promote products derived from this software without specific prior written permission. THIS SOFTWARE IS PROVIDED BY HARVARD AND ITS CONTRIBUTORS "AS IS" AND ANY EXPRESS OR IMPLIED WARRANTIES, INCLUDING, BUT NOT LIMITED TO, THE IMPLIED WARRANTIES OF MERCHANTABILITY AND FITNESS FOR A PARTICULAR PURPOSE ARE DISCLAIMED. IN NO EVENT SHALL HARVARD OR ITS CONTRIBUTORS BE LIABLE FOR ANY DIRECT, INDIRECT, INCIDENTAL, SPECIAL, EXEMPLARY, OR CONSEQUENTIAL DAMAGES (INCLUDING, BUT NOT LIMITED TO, PROCUREMENT OF SUBSTITUTE GOODS OR SERVICES; LOSS OF USE, DATA, OR PROFITS; OR BUSINESS INTERRUPTION) HOWEVER CAUSED AND ON ANY THEORY OF LIABILITY, WHETHER IN CONTRACT, STRICT LIABILITY, OR TORT (INCLUDING NEGLIGENCE OR OTHERWISE) ARISING IN ANY WAY OUT OF THE USE OF THIS SOFTWARE, EVEN IF ADVISED OF THE POSSIBILITY OF SUCH DAMAGE.

Portions relating to Flexnet and the Apache Software Foundation Version 1.1 Copyright © 2000 The Apache Software Foundation. All rights reserved. Redistribution and use in source and binary forms, with or without modification, are permitted provided that the following conditions are met: Redistributions of source code must retain the above copyright notice, this list of conditions and the following disclaimer. Redistributions in binary form must reproduce the above copyright notice, this list of conditions and the following disclaimer in the documentation and/or other materials provided with the distribution. The end-user documentation included with the redistribution, if any, must include the following acknowledgment: "This product includes software developed by the Apache Software Foundation (<http://www.apache.org/>)". Alternately, this acknowledgment may appear in the software itself, if and wherever such third-party acknowledgments normally appear. The names "Apache" and "Apache Software Foundation" must not be used to endorse or promote products derived from this software without prior written permission. For written permission, please contact apache@apache.org. Products derived from this software may not be called "Apache", nor may "Apache" appear in their name, without prior written permission of the Apache Software Foundation. THIS SOFTWARE IS PROVIDED "AS IS" AND ANY EXPRESSED OR IMPLIED WARRANTIES, INCLUDING, BUT NOT LIMITED TO, THE IMPLIED WARRANTIES OF MERCHANTABILITY AND FITNESS FOR A PARTICULAR PURPOSE ARE DISCLAIMED. IN NO EVENT SHALL THE APACHE SOFTWARE FOUNDATION OR ITS CONTRIBUTORS BE LIABLE FOR ANY DIRECT, INDIRECT, INCIDENTAL, SPECIAL, EXEMPLARY, OR CONSEQUENTIAL DAMAGES (INCLUDING, BUT NOT LIMITED TO, PROCUREMENT OF SUBSTITUTE GOODS OR SERVICES; LOSS OF USE, DATA, OR PROFITS; OR BUSINESS INTERRUPTION) HOWEVER CAUSED AND ON ANY THEORY OF LIABILITY,

WHETHER IN CONTRACT, STRICT LIABILITY, OR TORT (INCLUDING NEGLIGENCE OR OTHERWISE) ARISING IN ANY WAY OUT OF THE USE OF THIS SOFTWARE, EVEN IF ADVISED OF THE POSSIBILITY OF SUCH DAMAGE. This software consists of voluntary contributions made by many individuals on behalf of the Apache Software Foundation. For more information on the Apache Software Foundation, please see <http://www.apache.org/>. Portions of this software are based upon public domain software originally written at the National Center for Supercomputer Applications, University of Illinois, Urbana-Champaign.

Portions relating to Flexnet and the Open SSL Project Copyright © 1998-2003 The OpenSSL Project. All rights reserved. Redistribution and use in source and binary forms, with or without modification, are permitted provided that the following conditions are met: Redistributions of source code must retain the above copyright notice, this list of conditions and the following disclaimer. Redistributions in binary form must reproduce the above copyright notice, this list of conditions and the following disclaimer in the documentation and/or other materials provided with the distribution. All advertising materials mentioning features or use of this software must display the following acknowledgment: "This product includes software developed by the OpenSSL Project for use in the OpenSSL Toolkit. (<http://www.openssl.org/>)". The names "OpenSSL Toolkit" and "OpenSSL Project" must not be used to endorse or promote products derived from this software without prior written permission. For written permission, please contact openssl-core@openssl.org. Products derived from this software may not be called "OpenSSL" nor may "OpenSSL" appear in their names without prior written permission of the OpenSSL Project. Redistributions of any form whatsoever must retain the following acknowledgment: "This product includes software developed by the OpenSSL Project for use in the OpenSSL Toolkit (<http://www.openssl.org/>)". THIS SOFTWARE IS PROVIDED BY THE OPENSLL PROJECT "AS IS" AND ANY EXPRESSED OR IMPLIED WARRANTIES, INCLUDING, BUT NOT LIMITED TO, THE IMPLIED WARRANTIES OF MERCHANTABILITY AND FITNESS FOR A PARTICULAR PURPOSE ARE DISCLAIMED. IN NO EVENT SHALL THE OPENSLL PROJECT OR ITS CONTRIBUTORS BE LIABLE FOR ANY DIRECT, INDIRECT, INCIDENTAL, SPECIAL, EXEMPLARY, OR CONSEQUENTIAL DAMAGES (INCLUDING, BUT NOT LIMITED TO, PROCUREMENT OF SUBSTITUTE GOODS OR SERVICES; LOSS OF USE, DATA, OR PROFITS; OR BUSINESS INTERRUPTION) HOWEVER CAUSED AND ON ANY THEORY OF LIABILITY, WHETHER IN CONTRACT, STRICT LIABILITY, OR TORT (INCLUDING NEGLIGENCE OR OTHERWISE) ARISING IN ANY WAY OUT OF THE USE OF THIS SOFTWARE, EVEN IF ADVISED OF THE POSSIBILITY OF SUCH DAMAGE.

Portions relating to Flexnet and Eric Young Copyright © 1995-1998 Eric Young (eay@cryptsoft.com) All rights reserved. This package is an SSL implementation written by Eric Young (eay@cryptsoft.com). The implementation was written so as to conform with Netscape's SSL. This library is free for commercial and non-commercial use as long as the following conditions are adhered to. The following conditions apply to all code found in this distribution, be it the RC4, RSA, I2C, DES, etc., code; not just the SSL code. The SSL documentation included with this distribution is covered by the same copyright terms except that the holder is Tim Hudson (tjh@cryptsoft.com). Copyright remains Eric Young's, and as such any Copyright notices in the code are not to be removed. If this package is used in a product, Eric Young should be given attribution as the author of the parts of the library used. This can be in the form of a textual message at program startup or in documentation (online or textual) provided with the package. Redistribution and use in source and binary forms, with or without modification, are permitted provided that the following conditions are met: 1. Redistributions of source code must retain the copyright notice, this list of conditions and the following disclaimer. 2. Redistributions in binary form must reproduce the above copyright notice, this list of conditions and the following disclaimer in the documentation and/or other materials provided with the distribution. 3. All advertising materials mentioning features or use of this software must display the following acknowledgement: "This product includes cryptographic software written by Eric Young (eay@cryptsoft.com)". The word "cryptographic" can be left out if the routines from the library being used are not cryptographic related). 4. If you include any Windows specific code (or a derivative thereof) from the apps directory (application code) you must include an acknowledgement: "This product includes software written by Tim Hudson (tjh@cryptsoft.com)". THIS SOFTWARE IS PROVIDED BY ERIC YOUNG "AS IS" AND ANY EXPRESS OR IMPLIED WARRANTIES, INCLUDING, BUT NOT LIMITED TO, THE IMPLIED WARRANTIES OF MERCHANTABILITY AND FITNESS FOR A PARTICULAR PURPOSE ARE DISCLAIMED. IN NO EVENT SHALL THE AUTHOR OR CONTRIBUTORS BE LIABLE FOR ANY DIRECT, INDIRECT, INCIDENTAL, SPECIAL, EXEMPLARY, OR CONSEQUENTIAL DAMAGES (INCLUDING, BUT NOT LIMITED TO, PROCUREMENT OF SUBSTITUTE GOODS OR SERVICES; LOSS OF USE, DATA, OR PROFITS; OR BUSINESS INTERRUPTION) HOWEVER CAUSED AND ON ANY THEORY OF LIABILITY, WHETHER IN CONTRACT, STRICT LIABILITY, OR TORT (INCLUDING NEGLIGENCE OR OTHERWISE) ARISING IN ANY WAY OUT OF THE USE OF THIS SOFTWARE, EVEN IF ADVISED OF THE POSSIBILITY OF SUCH DAMAGE.

Portions relating to Libtiff Copyright ©1988-1997 Sam Leffler. Copyright © 1991-1997 Silicon Graphics, Inc. Permission to use, copy, modify, distribute, and sell this software and its documentation for any purpose is hereby granted without fee, provided that (i) the above copyright notices and this permission notice appear in all copies of the software and related documentation, and (ii) the names of Sam Leffler and Silicon Graphics may not be used in any advertising or publicity relating to the software without the specific, prior written permission of Sam Leffler and Silicon Graphics. THE SOFTWARE IS PROVIDED "AS-IS" AND WITHOUT WARRANTY OF ANY KIND, EXPRESS, IMPLIED OR OTHERWISE, INCLUDING WITHOUT LIMITATION, ANY WARRANTY OF MERCHANTABILITY OR FITNESS FOR A PARTICULAR PURPOSE. IN NO EVENT SHALL SAM LEFFLER OR SILICON GRAPHICS BE LIABLE FOR ANY SPECIAL, INCIDENTAL, INDIRECT OR CONSEQUENTIAL DAMAGES OF ANY KIND, OR ANY DAMAGES WHATSOEVER RESULTING FROM LOSS OF USE, DATA OR PROFITS, WHETHER OR NOT ADVISED OF THE POSSIBILITY OF DAMAGE, AND ON ANY THEORY OF LIABILITY, ARISING OUT OF OR IN CONNECTION WITH THE USE OR PERFORMANCE OF THIS SOFTWARE.

Portions relating to OpenEXR Copyright © 2002, Industrial Light & Magic, a division of Lucas Digital Ltd. LLC. All rights reserved. Redistribution and use in source and binary forms, with or without modification, are permitted provided that the following conditions are met: Redistributions of source code must retain the above copyright notice, this list of conditions and the following disclaimer. Redistributions in binary form must reproduce the above copyright notice, this list of conditions and the following disclaimer in the documentation and/or other materials provided with the distribution. Neither the name of Industrial Light & Magic nor the names of its contributors may be used to endorse or promote products derived from this software without specific prior written permission. THIS SOFTWARE IS PROVIDED BY THE COPYRIGHT HOLDERS AND

CONTRIBUTORS "AS IS" AND ANY EXPRESS OR IMPLIED WARRANTIES, INCLUDING, BUT NOT LIMITED TO, THE IMPLIED WARRANTIES OF MERCHANTABILITY AND FITNESS FOR A PARTICULAR PURPOSE ARE DISCLAIMED. IN NO EVENT SHALL THE COPYRIGHT OWNER OR CONTRIBUTORS BE LIABLE FOR ANY DIRECT, INDIRECT, INCIDENTAL, SPECIAL, EXEMPLARY, OR CONSEQUENTIAL DAMAGES (INCLUDING, BUT NOT LIMITED TO, PROCUREMENT OF SUBSTITUTE GOODS OR SERVICES; LOSS OF USE, DATA, OR PROFITS; OR BUSINESS INTERRUPTION) HOWEVER CAUSED AND ON ANY THEORY OF LIABILITY, WHETHER IN CONTRACT, STRICT LIABILITY, OR TORT (INCLUDING NEGLIGENCE OR OTHERWISE) ARISING IN ANY WAY OUT OF THE USE OF THIS SOFTWARE, EVEN IF ADVISED OF THE POSSIBILITY OF SUCH DAMAGE.

Portions relating to FreeType 2.2.1 are copyright © 2006 The FreeType Project (www.freetype.org). All rights reserved.

Portions relating to JPEG © Copyright 1991-1998 Thomas G. Lane. All Rights Reserved,

Portions relating to OpenGL® Sample Implementation 1.2.1, 2001, developed by Silicon Graphics, Inc. The Original Code is Copyright © 1991-1993 Silicon Graphics, Inc. Copyright in any portions created by third parties is as indicated elsewhere herein. All Rights Reserved.

Portions relating to Valgrind Copyright © 2000-2007 Julian Seward. All rights reserved. Distributed under the terms of the GNU General Public License.

Portions relating to libxfs Copyright © 2005 Silicon Graphics, Inc. All Rights Reserved. Distributed under the terms of the GNU General Public License.

Portions relating to libquicktime v 1.0.2, Copyright 2007. Distributed under the terms of the GNU General Public License.

Portions related to Color Transformation Language are Copyright © 2006 Academy of Motion Picture Arts and Sciences ("A.M.P.A.S."). Portions contributed by others as indicated. All rights reserved. A world-wide, royalty-free, non-exclusive right to distribute, copy, modify, create derivatives, and use, in source and binary forms, is hereby granted, subject to acceptance of this license. Performance of any of the aforementioned acts indicates acceptance to be bound by the following terms and conditions: Redistributions of source code must retain the above copyright notice, this list of conditions and the Disclaimer of Warranty. Redistributions in binary form must reproduce the above copyright notice, this list of conditions and the Disclaimer of Warranty in the documentation and/or other materials provided with the distribution. Nothing in this license shall be deemed to grant any rights to trademarks, copyrights, patents, trade secrets or any other intellectual property of A.M.P.A.S. or any contributors, except as expressly stated herein, and neither the name of A.M.P.A.S. nor any other contributors to this software, may be used to endorse or promote products derived from this software without specific prior written permission of A.M.P.A.S. or contributor, as appropriate. This license shall be governed by the laws of the State of California, and subject to the jurisdiction of the courts therein. Disclaimer of Warranty: THIS SOFTWARE IS PROVIDED BY A.M.P.A.S. AND CONTRIBUTORS "AS IS" AND ANY EXPRESS OR IMPLIED WARRANTIES, INCLUDING, BUT NOT LIMITED TO, THE IMPLIED WARRANTIES OF MERCHANTABILITY, FITNESS FOR A PARTICULAR PURPOSE, AND NON-INFRINGEMENT ARE DISCLAIMED. IN NO EVENT SHALL A.M.P.A.S., ANY CONTRIBUTORS OR DISTRIBUTORS BE LIABLE FOR ANY DIRECT, INDIRECT, INCIDENTAL, SPECIAL, EXEMPLARY, OR CONSEQUENTIAL DAMAGES (INCLUDING, BUT NOT LIMITED TO, PROCUREMENT OF SUBSTITUTE GOODS OR SERVICES; LOSS OF USE, DATA, OR PROFITS; OR BUSINESS INTERRUPTION) HOWEVER CAUSED AND ON ANY THEORY OF LIABILITY, WHETHER IN CONTRACT, STRICT LIABILITY, OR TORT (INCLUDING NEGLIGENCE OR OTHERWISE) ARISING IN ANY WAY OUT OF THE USE OF THIS SOFTWARE, EVEN IF ADVISED OF THE POSSIBILITY OF SUCH DAMAGE.

Portions relating to Doxygen 1.5.6 are Copyright © 1997-2008 by Dimitri van Heesch. Permission to use, copy, modify, and distribute this software and its documentation under the terms of the GNU General Public License is hereby granted. No representations are made about the suitability of this software for any purpose. It is provided "as is" without express or implied warranty.

Trademarks

The following are registered trademarks or trademarks of Autodesk, Inc., in the USA and other countries: 3DEC (design/logo), 3December, 3December.com, 3ds Max, ADI, Alias, Alias (swirl design/logo), AliasStudio, Alias|Wavefront (design/logo), ATC, AUGI, AutoCAD, AutoCAD Learning Assistance, AutoCAD LT, AutoCAD Simulator, AutoCAD SQL Extension, AutoCAD SQL Interface, Autodesk, Autodesk Envision, Autodesk Insight, Autodesk Intent, Autodesk Inventor, Autodesk Map, Autodesk MapGuide, Autodesk Streamline, AutoLISP, AutoSnap, AutoSketch, AutoTrack, Backdraft, Built with ObjectARX (logo), Burn, Buzzsaw, CAiCE, Can You Imagine, Character Studio, Cinestream, Civil 3D, Cleaner, Cleaner Central, ClearScale, Colour Warper, Combustion, Communication Specification, Constructware, Content Explorer, Create>what's>Next> (design/logo), Dancing Baby (image), DesignCenter, Design Doctor, Designer's Toolkit, DesignKids, DesignProf, DesignServer, DesignStudio, Design|Studio (design/logo), Design Web Format, DWF, DWG, DWG (logo), DWG Extreme, DWG TrueConvert, DWG TrueView, DXF, Ecotect, Exposure, Extending the Design Team, FBX, Filmbox, FMDesktop, Freewheel, GDX Driver, Gmax, Green Building Studio, Heads-up Design, Heidi, HumanIK, IDEA Server, i-drop, ImageModeler, iMOUT, Incinerator, Inventor, Inventor LT, Kaydara, Kaydara (design/logo), Kynapse, Kynogon, LocationLogic, Lustre, Matchmover, Maya, Mechanical Desktop, MotionBuilder, Movimento, Mudbox, NavisWorks, ObjectARX, ObjectDBX, Open Reality, Opticore, Opticore Opus, PolarSnap, PortfolioWall, Powered with Autodesk Technology, Productstream, ProjectPoint, ProMaterials, RasterDWG, Reactor, RealDWG, Real-time Roto, REALVIZ, Recognize, Render Queue, Retimer, Reveal, Revit, Showcase, ShowMotion, SketchBook, SteeringWheels, Stitcher, StudioTools, Topobase, Toxik, TrustedDWG, ViewCube, Visual, Visual Construction, Visual Drainage, Visual Landscape, Visual Survey, Visual Toolbox, Visual LISP, Voice Reality, Volo, Vtour, Wiretap, and WiretapCentral.

The following are registered trademarks or trademarks of Autodesk Canada Co. in the USA and/or Canada and other countries: Backburner, Discreet, Fire, Flame, Flint, Frost, Inferno, Multi-Master Editing, River, Smoke, Sparks, Stone, and Wire.

All other brand names, product names or trademarks belong to their respective holders.

Disclaimer

THIS PUBLICATION AND THE INFORMATION CONTAINED HEREIN IS MADE AVAILABLE BY AUTODESK, INC. "AS IS". AUTODESK, INC. DISCLAIMS ALL WARRANTIES, EITHER EXPRESS OR IMPLIED, INCLUDING BUT NOT LIMITED TO ANY IMPLIED WARRANTIES OF MERCHANTABILITY OR FITNESS FOR A PARTICULAR PURPOSE REGARDING THESE MATERIALS.

Published by:

Autodesk, Inc.

111 McInnis Parkway

San Rafael, CA 94903, USA

Title: Autodesk Toxik 2009

Document Version: 1

Date: February 19, 2009

contents

Contents

1	Introduction	1
	Summary	1
	Overview.....	1
	Audience.....	1
	Autodesk Toxik Components.....	2
	Toxik Configuration.....	2
	Documentation and Training.....	3
2	Downloading the Distribution	5
	Summary	5
	Overview.....	5
	Downloading the Distribution.....	5
3	Installing the License Server	7
	Summary	7
	Overview.....	7
	Requesting a License.....	7
	Installing the License Server	12
	Manually Configuring the License Server.....	13
	Starting and Stopping the License Server	13

4	Installing Toxik	15
	Summary	15
	Overview.....	15
	Before You Begin	15
	Installing Toxik	16
	Changing System Limits on a Toxik Workstation.....	17
5	Starting Toxik	19
	Summary	19
	Starting Toxik	19
6	Uninstalling Toxik	23
	Summary	23
	Overview.....	23
	Uninstalling Toxik	23
	Uninstalling the License Server.....	24
A	Appendix A	25
	Summary	25
	Overview.....	25
	System Requirements.....	26
	Supported Graphics Cards	27
	Bandwidth Requirements	28
	Index	31



Introduction

Summary

- [Overview](#) 1
- [Audience](#) 1
- [Autodesk Toxik Components](#) 2
- [Toxik Configuration](#) 2
- [Documentation and Training](#) 3

Overview

Welcome to the Autodesk *Toxik 2009 Installation Guide for Linux*. Toxik is Autodesk’s interactive solution for film compositing. It features a full High Dynamic Range (HDR) pipeline, next-generation 3D compositing, high performance interaction at extremely high resolutions and advanced rendering. It primarily features a databaseless workflow for data management, one Toxik seat, one scripting license, and unlimited rendering capabilities.

The Toxik seat can be updated with extensions that add functionality to the product by the means of new tools and core fixes.

This edition of Toxik is supported on Linux 64 bit workstations. It uses Python® for scripting.

This guide explains how to install Toxik and its software components.

Audience

This document is intended for the person or artist that will be both installing and using the Toxik software.

To carry out the installation with ease, you should be familiar with network-ready software and network topology issues, license management technology, the Linux operating system, as well as the general principles of software installation.

If you are not familiar with the above subjects, note that every effort has been made to ensure a smooth installation, whatever your level of experience. If you have difficulties, please contact Autodesk technical support.

Autodesk Toxik Components

A complete Toxik installation consists of a number of components.

Toxik Creative Application

The heart of Toxik is the creative application that permits the creation and playback of complex compositions, and supports manipulation of compositions in the media player itself.

Toxik License Server

The license server used in Toxik is FLEXnet™ 10.8.2.1. The license server keeps track of what components are running, and other licensing details. The license server only needs to be installed on one machine on the network.

Toxik Scripting

Toxik scripting provides Python-based access to Toxik through a command-line interface. Scripting provides an effective means of loading plug-ins, browsing the database, managing users, projects, media and assets, and so on. It also provides direct access to more sophisticated Toxik internals, including control and renderer. Scripts can be saved and executed.

Toxik Configuration

You will install Toxik on one workstation only.

System Requirements

Toxik can be supported by various CPU Architectures and Operating Systems—see [“System Requirements”](#) on page 26.

Playback speed in Toxik depends largely upon the ability of your local cache (attached storage) to deliver frame data at a high rate—see [“Bandwidth Requirements”](#) on page 28 and [“Supported Graphics Cards”](#) on page 27.

File Requirements

There are two files you should download, the Release Notes, and the Toxik Creative Application file which also contains the License Server program.

- Autodesk Toxik 2009 Release Notes (pdf).
- Autodesk Toxik 2009 Installer for 64bit operating systems: *Autodesk_Toxik_2009.tar.gz*

Documentation and Training

Information and documents in PDFs are available at www.autodesk.com/toxik-documentation.

Document	PDF	Online Help
Autodesk Toxik 2009 Release Notes	Yes	No
Autodesk Toxik 2009 Installation Guide	Yes	No
Autodesk Toxik 2009 User's Guide	Yes	Yes

Training	Format
Autodesk Toxik New Feature Videos	Macromedia Flash

Accessing Online Help

Autodesk provides documentation in an HTML help system displayed in a Web browser. The help is automatically installed with the software.

To start help:

- From the Toxik menu bar, choose Help >Toxik Help.
The Help appears in a browser window.

Release Notes

Release notes contain important information, including late-breaking information on Autodesk Toxik. Be sure to read the release notes before installing or using Toxik.

Documentation Conventions

The following conventions are used in this guide.

Notation	Usage
#	Indicates a command line to execute in a shell.
# cd /var/tmp/ora_inst	Commands are written in courier bold.

Notation	Usage
<i>/usr/src/redhat/SPECS/kernel-2.6.spec</i>	File names, URLs and directories are in italics.
<version#>	Variables, such as system-specific information, are enclosed in angle brackets and written in courier italics.

Contacting Technical Support

If you need more information, contact Technical Support at: *www.autodesk.com/subscriptionlogin*.

Downloading the Distribution



Summary

Overview	5
Downloading the Distribution	5

Overview

This chapter describes what to do after you have downloaded and uncompressed the distribution files from the Autodesk Subscription Center.

NOTE: It will be helpful to have a utility on-hand to verify that the files downloaded without corruption. The distribution provides message digest (.md5) files for this purpose.

Downloading the Distribution

When you purchase Toxik 2009, you will be advised either on your invoice or by email of your account user name and password, which will allow you to login to the Autodesk Subscription Center at www.autodesk.com/subscriptionlogin.

Once you have entered the Autodesk Subscription Center, you can download the Toxik 2009 Creative Application (including the License Server program). You can store the uncompressed file in your `/var/tmp` directory as in the following example, or a directory of your choice.

To download the distribution from the Autodesk Subscription Center:

1. To access the Autodesk Subscription Center go to this link: www.autodesk.com/subscriptionlogin.
2. Login to the Autodesk Subscription Center.

3. Locate the Toxik application, download the distribution and save it in a temporary directory.

The distribution consists of the following files:

File	Contents
Autodesk_Toxik_2009_64bit.tar.gz	Interactive creative application where you create your compositions, and license server program.
.md5 files	Message Digest files. Ensures the .zip files were not corrupted during the download.

NOTE: Using an appropriate utility, ensure data integrity by creating an MD5 “checksum” for each downloaded file and compare it to the message digest value in the corresponding file provided.

4. Navigate to the temporary directory.
cd /var/tmp, or **cd** to the directory in which you downloaded the files.
5. Uncompress the distribution files.
tar -xvzf Autodesk_Toxik_2009.tar.gz



Installing the License Server

Summary

- [Overview](#) 7
- [Requesting a License](#) 7
- [Installing the License Server](#) 12
- [Manually Configuring the License Server](#) 13
- [Starting and Stopping the License Server](#) 13

Overview

When you purchase **Toxik** your reseller or Autodesk Licensing Authority will provide you with your unique serial number. Before you can install **Toxik**, you must go online to obtain your **Toxik** license. Often the license server is installed on a dedicated machine that manages all your Autodesk licenses for your network. Autodesk **Toxik** uses Macrovision® FLEXnet™ 10.8.2.1 licensing technology.

Requesting a License

Before you go online to the Autodesk site you will need to determine the computer name and hardware/MAC address of the workstation on which you will install the license server.

To determine the computer name and the hardware/Linux address:

1. Open a shell and type the following command to determine the License Server computer host name:

```
# uname -a
```

- To determine the hardware/Linux address, issue the following command:

```
# ifconfig
```

The following information appears.

```

Exec cleartool
bobby@london:~$ ifconfig
eth0:  Link encap:Ethernet  HWaddr 00:0C:XX:XX:XX:XX
       inet addr:XXX.XX.XXX.XXX Bcast:XXX.XX.XXX.XXX Mask:XXX.XXX.XXX.X
       inet6 addr: fe80::20c:76ff:fe85:e4b8/64 Scope:Link
       UP BROADCAST RUNNING MULTICAST MTU:1500 Metric:1
       RX packets:202236 errors:0 dropped:0 overruns:0 frame:0
       TX packets:85843 errors:0 dropped:0 overruns:0 carrier:0
       collisions:0 txqueuelen:1000
       RX bytes:71115417 (67.8 MiB) TX bytes:19159036 (18.2 MiB)
       Interrupt:209

lo:    Link encap:Local Loopback
       inet addr:XXX.X.X.X Mask:XXX.X.X.X
       inet6 addr: ::1/128 Scope:Host
       UP LOOPBACK RUNNING MTU:16436 Metric:1
       RX packets:174724 errors:0 dropped:0 overruns:0 frame:0
       TX packets:174724 errors:0 dropped:0 overruns:0 carrier:0
       collisions:0 txqueuelen:0
       RX bytes:30224685 (28.8 MiB) TX bytes:30224685 (28.8 MiB)

bobby@london:~$
0 [52]-->

```

a) Hardware/MAC address

- Make a note of the hardware/Linux address and close the shell.

To obtain your license file:

- Using your web browser connect to <http://register.autodesk.com>, then create a User ID if you are a new user. Complete the fields by providing your contact information. Click Next.
- On the Account Information page complete the fields with your contact information. Click Next.
- On the Choose Account page the Select radio button is set by default for the account you have just created. Click Next.

4. On the Product Registration & Activation page, Enter your unique serial number provided by your reseller or Autodesk Licensing Authority. Click Next.

The screenshot shows a Mozilla Firefox browser window titled "Register Once - Welcome!". The address bar displays "https://registeronce.autodesk.com/prodre". The page features the Autodesk logo at the top. Below the logo, the heading "Product Registration & Activation" is visible, along with a "Log Off" link. A table contains user information:

User ID	First Name	Last Name	Preferred Language
tigerbear	Tiger	Bear	English (en)

Below the table, the "Account" field is filled with "Tigertiger". The page includes a thank-you message and instructions for the next steps. A section titled "Enter Product Serial Number." contains a text input field with the value "346-12345678" and a note: "For Subscription Customers, enter your Group ID." At the bottom of the form area, there are two buttons: "<< Back" and "Next >>". The footer of the page contains the copyright notice: "© Copyright 2007 Autodesk, Inc. All rights reserved. Legal Notices & Trademark - Privacy Policy - Contact Autodesk". The browser's status bar at the bottom shows "Done" and the URL "registeronce.autodesk.com".

3 Installing the License Server

5. On the next Product Registration & Activation page Select Single Server, enter the Server Host name (Licence Server computer name), and the Server ID (hardware/MAC address). Click Next.

The screenshot shows a Mozilla Firefox browser window titled "Register Once - Welcome! - Mozilla Firefox". The address bar shows "registeronce.autodesk.com". The page content includes the Autodesk logo and a "Product Registration & Activation" section. The user information is as follows:

User ID	First Name	Last Name	Preferred Language
tigerbear	Tiger	Bear	English (en)

Account: Tigertiger
Product: Autodesk Toxik 2009 0
Serial Number/Group ID: 346-67859481

Please enter the following information

Product Information

Network server type

- Single server
- Redundant server
- Distributed server

Server 1 host name :
Server 1 ID :

<< Back Next >>

© Copyright 2007 Autodesk, Inc. All rights reserved. [Legal Notices & Trademark](#) - [Privacy Policy](#) - [Contact Autodesk](#)

Done registeronce.autodesk.com

- On the next Product Registration & Activation page click Save License File.

Register Once - Welcome! - Mozilla Firefox

File Edit View History Bookmarks Tools Help

https://registeronce.autodesk.com/prodreg

Autodesk

Product Registration & Activation [Log Off](#)

User ID	First Name	Last Name	Preferred Language
tigerbear	Tiger	Bear	English (en)

Account: Tigertiger

Product: Autodesk Toxik 2009 0

Serial Number/Group ID: 346-67861325

License Received

The license file information below contains important licensing information including license type, behavior, and the number of seats available for use.

You must save that information to a license file in the Program Files\Autodesk License Manager\License folder on your license server.

You can name the license file anything you like, although the name must have a .lic extension.

You can also append the INCREMENT information to an existing Autodesk .lic file on your license server.

For more information about how to set up your license file and configure your license server please refer to the Network Licensing Guide.

License File Text:

```
SERVER machine_name 0019b949588e
USR_SERVER
VENDOR adskFilez port=2080
INCREMENT 60700FOXIK_2008_OP adskFilez 1.000 30-nov-2007 5000 \
  VENDOR_STRING=commercial+extendable BORBO=4320 SUPRSEDR \
  DUP_GROUP=UH ISSURD=17-Oct-2007 SH=346-46661325 SIGH="1B73 \
  FH61 3E37 B596 8AC8 D910 1234 8765 RD94 57D6 1962 94B0 D36F \
  IADA ADP9 06A3 088E RCF2 ADS1 A0D7 26AF 1234 8765 4136 18CA \
  4283 7289 3327 9297 A83B" SIGH="0AFA 2F56 FFF0 B782 80D5 80B1 \
  C859 6D86 1234 8765 8C71 R124 R3C1 3ACK 2FFK 095F A69B 3K16 \
  909F 3B4F 9DRD F6C3 E1RC 1BCF 0E21 2399 7F5F 97F8 0326 552D"
```

[Save License File](#)

[Register and activate more products](#)

[Print](#) [Save Page](#)

Note: It is recommended that you print or save the contents of this page by using the buttons above.

© Copyright 2007 Autodesk, Inc. All rights reserved. [Legal Notices & Trademark](#) - [Privacy Policy](#) - [Contact Autodesk](#)

Done registeronce.autodesk.com

NOTE: You also have the option to Print or Save Page. However, keep your license string in a safe place as you will need it to install or reinstall the license server. The Toxik Creative Application can be installed even if there is no license server, although the user will receive a warning that the license server is missing during installation.

- A dialog box will open, the default setting is Save to Disk. Click OK.

NOTE: As an example we have save the license file to **`/var/tmp/TOXIK2009enlicense.lic`**, however you may save the file to a location of your choice.

8. You will return to the Product Registration & Activation page, if you don't need to Register and activate more products, close the window.
9. If you have any licensing questions or issues, please address them as follows:

	In North America	Outside North America
Hours	Monday to Friday 8 a.m.–8 p.m. EST (excluding certain holidays).	Monday to Friday 8 a.m.–8 p.m. EST (excluding certain holidays).
Phone	Toll-free: 1.800.925.6442	Direct dial: +1 514.954.7199
E-mail	me.licensing@autodesk.com	me.licensing@autodesk.com
Direct Line	+1 514.954.7199	
Licensing Fax	+1 514.954.7254	+1 514.954.7254

Installing the License Server

The license server tracks how many users are running Toxik. It must be installed before you install the Toxik 2009 application.

To install the license server:

1. Navigate to the temporary directory.

cd /var/tmp, or **cd** to the directory in which you uncompressed the files.

2. Login as root, and run the setup file.

```
# su - root
```

```
# cd /var/tmp/Autodesk_License_Server_10.8.2.1_installer
```

```
# ./setup.py
```

The software license agreement appears.

Click **ENTER** until the last page appears. You must accept the terms of the agreement in order to continue with the installation. Type **accept** and press **ENTER** to continue.

3. You are prompted to enter the path to install the license server.

```
[ /usr/autodesk/Autodesk_License_Server ]
```

Press **ENTER** for the default path.

4. The installer validates the path, and you are prompted to install the software.

The default response is, YES, press **ENTER**.

5. The installer installs the software.

You are asked if you want to continue with the configuration. If yes, press **ENTER**. If not, see [“Manually Configuring the License Server”](#) on page 13.

6. If you chose to continue with the configuration, you are prompted for the path to the license file.

The following command line gives an example of the path where we had saved the license file. Enter your path and press **ENTER**.

Example: **`/var/tmp/TOXIK2009enlicense.lic`**

7. You are prompted for the name of the user who will run the license server. Press **ENTER** to accept **autodesk** as the user. If the name does not exist, you are prompted to create one. Press **ENTER** to accept.

NOTE: It is preferable that you enter “autodesk” as a user as this will only create a local user, not a network user.

8. You are asked if you want the installer to add the license server daemon to the system services and start it. Press **ENTER**.

The installation procedure has been completed.

Manually Configuring the License Server

You can manually configure the license server if you are using Red Hat Enterprise Linux WS 4.

To manually configure the license server:

- Issue the following commands:

```
# su - root

#ln -s /usr/autodesk/Autodesk_License_Server/etc/lmgrd.init
/etc/init.d/lmgrd

#cd /etc/init.d

#chkconfig --add lmgrd

#chkconfig --level 345 lmgrd on
```

Starting and Stopping the License Server

You can start and stop the license server if you need to update the license file.

To start the license server:

- Issue the following commands:

```
# su - root
```

```
#/etc/init.d/lmgrd start
```

To stop the license server:

- Issue the following commands:

```
# su - root
```

```
#/etc/init.d/lmgrd stop
```

NOTE: To view if the license server has correctly loaded the license token, open the log file:

```
# more /usr/autodesk/Autodesk_License_Server/log/toxik.log
```

NOTE: lmgrd has been configured for init levels 3, 4, and 5.

Installing Toxik



Summary

Overview	15
Before You Begin	15
Installing Toxik	16
Changing System Limits on a Toxik Workstation	17

Overview

You are now ready to install the Toxik 2009 creative application. This chapter describes each stage of the installation. It begins by presenting some decisions you must make during the installation, and helps you prepare for configuring the software. Next, it presents the step-by-step procedure for installing the software.

Before You Begin

If you want high-performance playback, you will need to do the following:

- Add XFS file system support.
- Format your media cache using XFS.

NOTE: Toxik has been tested with a media cache on a disk drive that uses EXT3 and XFS.

NOTE: You must have root privileges to install Toxik 2009.

Installing the Software

When you run the installation script, you are installing the Toxik Creative ApplicationToxik. This includes Toxikplug-ins (browsers, modules, tools and views), Python scripting, and fonts.

Configuring the Media Cache

The media cache is another configuration you will be asked to perform during the install. This is the locally attached storage where images are stored when you import them, and to which intermediate results are written before being rendered and published.

The media cache is managed by the operating system. Nevertheless, you must decide where the media cache will be located, and how large it will be (either in megabytes or as a percentage of the drive). For maximum speed, the media cache is usually local storage. In general, the larger the media cache the better, since it reduces the number of reads and writes to and from the external storage. For best results, locate the media cache on the local disk with the most available space.

NOTE: It is strongly recommended that the Autodesk Toxik media cache have a separate partition, and that the partition resides on a disk other than the operating system, ideally on a RAID device. For each minute of footage at 2K RGB using 16 bits @ 24fps depth, you will require 40 GB of media cache space. The Toxik media cache requires a minimum of 10 GB, while an optimal media cache size is suggested at 200GB. However depending on the project, you may want to consider a media cache size of 1 terabyte for a high-performance configuration.

For information on the effect of the media cache on performance, see Appendix [“Bandwidth Requirements”](#) on page 28.

Installing Toxik

The Autodesk Toxik installer is automated and will quickly guide you through the process.

To install Toxik:

1. Navigate to the temporary directory.

```
cd /var/tmp, or cd to the directory in which you uncompressed the files.
```

2. Log on as root, and start the installer.

```
# su - root
```

```
# cd /var/tmp/Autodesk_Toxik_2009_installer
```

```
# ./setup.py
```

The software license agreement appears.

Click **ENTER** until the last page appears. You must accept the terms of the agreement in order to continue with the installation. Type **accept** and press **ENTER** to continue.

3. You are prompted to enter the path to install Toxik.
[/usr/autodesk/Autodesk_Toxik_2009]
 Press **ENTER** for the default path.
NOTE: If you want to specify a different path, type the location, and press **ENTER**.
4. When the path is validated you are asked if you want to install. If you want to proceed, press **ENTER**.
5. Enter the path to the default HTML viewer. Select the default response:
[/usr/bin/<HTML viewer>] and press **ENTER**.
6. Enter the name of the license server preceded with an '@'
@<license server name> and press **ENTER**
 OR
<port number>@<license server name> and press **ENTER**
NOTE: To see if the license server is reachable, issue the following command:
ping <machine name>
7. Enter the media cache location. Select the default response below or enter an alternate location:
[/var/tmp/toxik/mediacache/] and press **ENTER**.
8. Enter the media cache's size in megabytes (10240 minimum), or a media cache size factor followed by the percent sign (ex: 50%).
 For maximum performance, you can allocate up to a maximum of 85% of disk space.
 Enter the size and press **ENTER** to complete installation.

Changing System Limits on a Toxik Workstation

Finally, in order to have Toxik run properly, make sure you make the following changes. If you are unsure about the procedure, please contact your system administrator.

To change the system limits on a Toxik workstation:

➤ Issue the following commands:

```
# su - root
```

Add the following line at the end, after the #@student line:

```
# <your favorite text editor>/etc/security/limits.conf
```

```
# @student      -          maxlogins  4
```

```
*                soft    nofile    65536
```

```
*                hard    nofile    65536
```

```
# reboot or init 6
```

Once the machine has rebooted, login as root:

```
# su - root
```

```
# tcsh
```

```
# limit
```

Descriptors will be set at 65536.

5 Starting Toxik

Summary

Starting Toxik	19
--------------------------------------	----

Starting Toxik

Before you can do any work using the Toxik 2009 application, you'll have to create either a new project, choose an existing project or open a recent project. For detailed information on using Toxik, refer to the *Toxik 2009 User's Guide* in the online help.

To start Toxik:

1. Determine the type of shell you're using: **# echo \$SHELL**

2. If your shell is tcsh or csh:

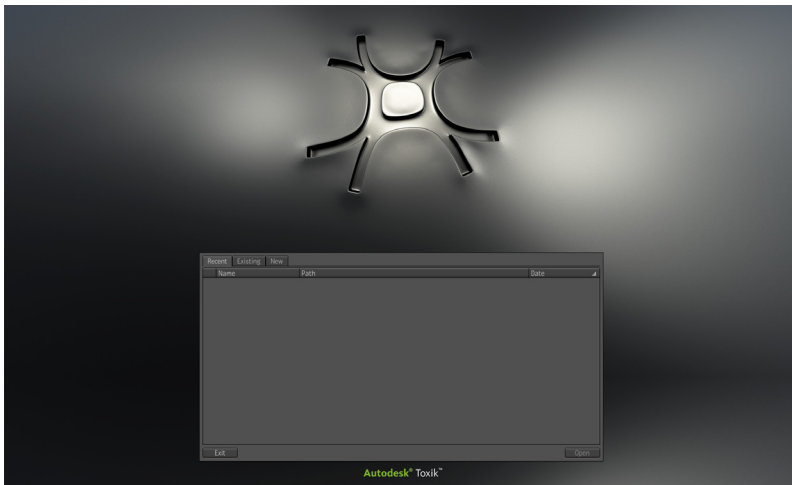
```
#source /usr/autodesk/Autodesk_Toxik_2009/bin/toxik-env.csh  
# toxik
```

OR

If your shell is bash:

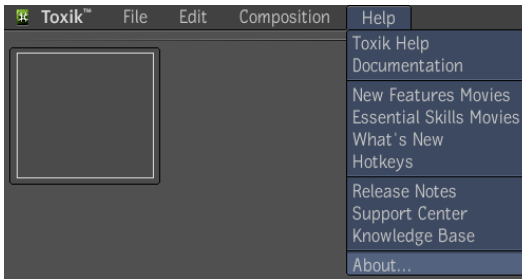
```
#source /usr/autodesk/Autodesk_Toxik_2009/bin/toxik-env.sh  
# toxik
```

The Toxik screen appears.

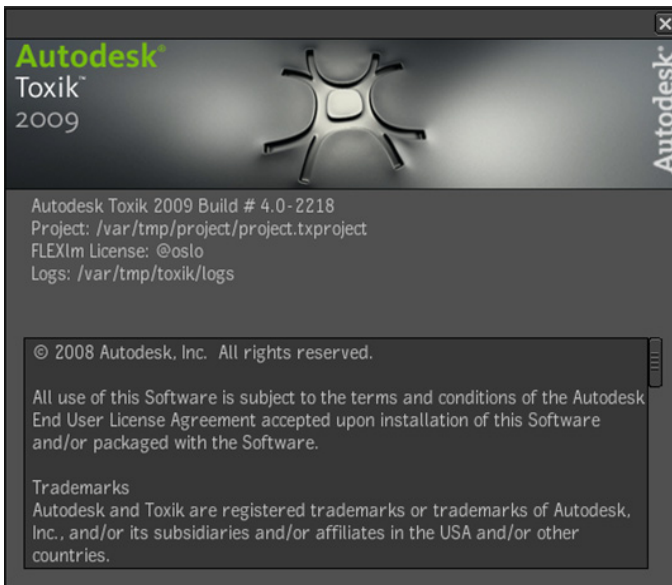


3. In the Toxik screen, create a project, select an existing project, or open a recent project, and click Open.

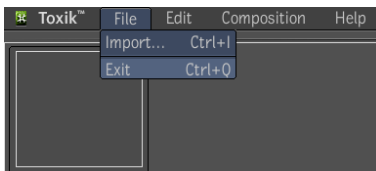
4. To check the software version and build number, select Help > About.



The software version and build number should be Autodesk Toxik 2009 Build #2218.



5. To exit the software, select File > Exit or press **CTRL+Q**.



Uninstalling Toxik

Summary

Overview	23
Uninstalling Toxik	23
Uninstalling the License Server	24

Overview

This chapter describes what to do, should you if you decide to uninstall the Toxik 2009 Creative Application and its components; Autodesk license server.

NOTE: If you already have another Autodesk product installed on your network that uses the same license management technology, you should not uninstall the Autodesk license server.

Uninstalling Toxik

Uninstalling Toxik 2009 removes all of the Autodesk Toxik 2009 files in the **/usr/autodesk** folder. It does not remove user and project preferences, projects, or compositions, or remove media.

To uninstall Toxik:

1. Issue the following commands:

```
# su - root
```

```
# cd /usr/autodesk/Autodesk_Toxik_2009/etc
```

```
# ./uninstall.py
```

NOTE: You can also type the following to get more information: **./uninstall.py -h**

2. You are prompted to remove Autodesk Toxik 2009. Press **ENTER**.

3. You are asked if you want to remove the whole directory structure. If you do, type **Yes** and press **ENTER** (No is the default).

NOTE: Modified files will also be deleted.

NOTE: You can consult the uninstall log at the following location: `/var/tmp/txuninstall.log`.

The Toxik 2009 Creative Application is uninstalled.

Uninstalling the License Server

To uninstall the license server:

1. Issue the following commands:

```
# su - root
```

```
# cd /usr/autodesk/Autodesk_License_Server/etc
```

```
# ./uninstall.py
```

NOTE: You can also type the following to get more information: `./uninstall.py -h`

2. You are prompted to remove the license server. Press **ENTER**.
3. You are prompted to delete the user 'autodesk' that you created at installation. If you do, type **Yes** and press **ENTER** (No is the default).
4. You are prompted to stop and delete the service from `/etc/init.d/lmgrd`. Press **ENTER**.
5. You are asked if you want to remove the whole directory structure. If you do, type **Yes** and press **ENTER**. (No is the default).

NOTE: Modified files will also be deleted, including the license file.

NOTE: You can consult the uninstall log at the following location: `/var/tmp/txuninstall.log`.

The license server is now uninstalled.

Appendix A

Summary

Overview	39
System Requirements	40
Supported Graphics Cards	41
Bandwidth Requirements	42

Overview

Appendix A contains the Toxik 2009 system requirements, supported graphics cards and drivers, and bandwidth requirements, allowed by Toxik.

System Requirements

Toxik can be supported with the following system requirements.

Playback speed in Toxik depends largely upon the ability of your local cache (attached storage) to deliver frame data at a high rate—see [“Bandwidth Requirements”](#) on page 42 and [“Supported Graphics Cards”](#) on page 41.

CPU Architecture

CPU	Autodesk License Server	Autodesk Toxik
Intel® Pentium IV™ single or dual processor	o	o
Intel® Xeon® EMT-64 single or dual processor	o	o
Intel Core™ Solo	o	o
Intel Core 2 Duo	o	o
AMD Athlon™ 64 FX	o	o
AMD Athlon 64 X2 Dual Core	o	o
AMD Athlon Multi-core	o	o

Operating System

OS	Autodesk License Server	Autodesk Toxik
Windows Vista 32 bits	o	o
Windows Vista 64bits	o	o
Windows® XP Pro	o	o
Windows XP 64 bits	o	o
Red Hat Enterprise Linux 5, 64 bits	o	o
Red Hat Enterprise Linux WS4, Update 6, 64 bits	o	o
Fedora 8, 64 bits	o	o

Autodesk Toxik Creative and Render Requirements

- 1 GB RAM minimum or more
- CPU 64 bit processor minimum requirement should support 64 bit SSE3 (Streaming SIMD Extensions 3)

- Supported graphics cards—see [“Supported Graphics Cards”](#) on page 41
- Three-button mouse or tablet
- Full keyboard
- Monitor with minimum resolution of 1600 x 1200 (recommended resolution 1920 x 1200)
- Network interface
- Media cache requirements:
 - 10 GB minimum, 200 GB recommended
 - HDD: IDE, SATA, SATA 2, SAS, SCSI
- 375 MB disk space for Autodesk Toxik Creative application
- Web browser with JavaScript and frames enabled (for viewing online help), Firefox is not supported as this creates errors when registering
- Adobe® Acrobat Reader (for viewing and printing documentation)

NOTE: Autodesk Toxik does not offer a network installation option.

Supported Graphics Cards

Toxik supports all the high-end Nvidia Quadro FX series graphic cards.

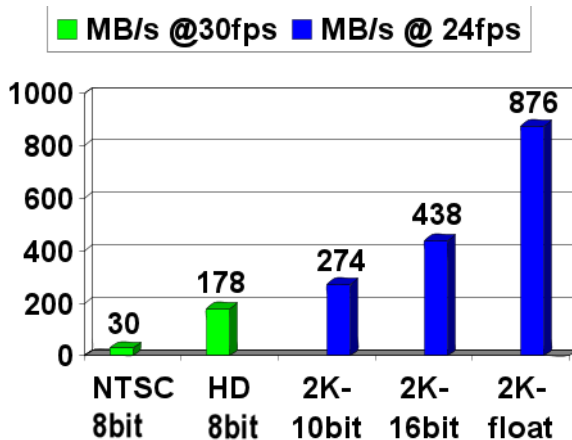
Graphics Card	Windows Driver	Linux Driver
NVIDIA Quadro FX5600	169.96	173.14.12
NVIDIA Quadro FX4600	169.96	173.14.12
NVIDIA Quadro FX4500	169.96	173.14.12
NVIDIA Quadro FX4400	169.96	173.14.12
NVIDIA Quadro FX4000	169.96	173.14.12
NVIDIA Quadro FX3700	169.96	173.14.12
NVIDIA Quadro FX3500	169.96	173.14.12
NVIDIA Quadro FX3450	169.96	173.14.12
NVIDIA Quadro FX3400	169.96	173.14.12
NVIDIA Quadro FX3000	169.96	173.14.12
NVIDIA Quadro FX2000	169.96	173.14.12
NVIDIA Quadro FX1400	169.96	173.14.12
NVIDIA Quadro FX1300	169.96	173.14.12
NVIDIA Quadro FX1100	169.96	173.14.12
NVIDIA Quadro FX1000	169.96	173.14.12
NVIDIA Quadro FX700	169.96	173.14.12

Graphics Card	Windows Driver	Linux Driver
NVIDIA Quadro FX500	169.96	173.14.12
ATI Fire GL V3600	8.443.1	---
ATI Fire GL V7350	8.443.1	---
ATI Fire GL V5600	8.443.1	---
ATI Fire GL V7600	8.443.1	---
ATI Fire GL V8600	8.443.1	---

Bandwidth Requirements

The following chart shows the bandwidth requirements in megabytes per second (MB/s) for playback of media of different formats. To ensure fast playback in Toxik, your attached storage, the local cache, must meet or exceed the bandwidth requirements of the desired format. Otherwise, Toxik will not receive the frames quickly enough. In the chart, “2K” refers to a full-aperture film image; that is, a 2048 x 1556 pixel RGB image.

NOTE: Toxik only stores images at three different pixel depths: 8-bit (int), 16-bit (half-float) and 32-bit (float). Any other formats are converted to the optimal format without losing any precision.



To calculate the bandwidth requirements for other formats, use the following formula:

$$\text{Bandwidth (MB/second)} = \frac{\text{horizontal res.} \times \text{vert res.} \times \text{frames/second} \times \text{channels/pixel} \times \text{bytes/channel}}{1024 \times 1024}$$

For example, a “2K” 16-bit, 35mm Full Aperture 2K image results in the following calculation:

$$\text{Bandwidth (MB/second)} = \frac{2048 \times 1556 \times 24 \times 3 \times 2}{1024 \times 1024} = 437.63$$

index

Index

A

- about 1
- audience 1
- Autodesk Subscription Center 5

B

- bandwidth requirements 28

C

- configurations, Toxik 2
- creative system requirements 26

D

- distribution files 5
- documentation 3
 - conventions 3
 - release notes 3
- documentation online help, accessing 3
- downloading files 5
- downloading the distribution
 - about 5
- drivers, graphics cards 27

F

- fast track videos
 - training 3
- FLEXnet license server 7

G

- graphic card drivers 27

I

- installation
 - about 1
 - audience 1
 - Toxik components 2
- installing licence server
 - about 7

L

- license server
 - about 2
 - configuring the installation manually 13
 - FLEXnet license 7
 - installing 12
 - obtaining license 7
 - requesting license 7
 - starting & stopping to update the license file
 - 13
 - technical assistance 12
 - uninstalling procedure 24

M

- media cache, configuration 16

N

- NVIDIA Quadro FX drivers 27

P

- Python scripting
 - about 2

Q

- Quadro FX drivers, NVIDIA 27

R

- real-time playback 26
- render system requirements 26
- requesting license 7
- requirements, system 2, 26

S

- scripting, Python 2
- Subscription Center
 - file requirements 3
- Subscription Center, location 4
- system requirements 2, 26
 - CPU Architecture 26
 - operating system 26

T

- technical support, contacting 4
- Toxik components
 - about 2
 - creative application 2
 - creative system requirements 26
 - graphics cards 27
 - license server 2
 - Python scripting 2
 - real-time playback 2
 - render system requirements 26
 - system requirements 2, 26
 - typical configurations 2
- Toxik creative application
 - about 15
 - bandwidth requirements 28
 - changing system limits 17
 - configuring the media cache 16
 - high performance playback 15
 - installation procedure 15, 16
 - runtime 15
 - starting 19
 - uninstalling 23
- training
 - fast track videos 3

U

- uninstalling
 - about 23
 - license server 24
 - Toxik creative application 23