

Top Reasons to Buy Autodesk Flame 2011

Creative 3D Finishing

Autodesk® Flame® 2011 software builds on a proven end-to-end 3D visual effects, design, and finishing solution for high-end post production. As a turnkey system, Flame combines high-quality performance with the creative tools necessary to help you take complex high-resolution projects from conform to final delivery without compromising quality. Using Flame, you can expand your creative capacity with Autodesk® Flame™ 2011 software and exchange assets with certain 3D applications to help build an integrated 3D creative finishing pipeline. Flame helps you attract the best jobs—and the best talent—and helps you keep your clients coming back for more.

For more information about Flame, visit www.autodesk.com/flame.

To locate the reseller nearest you, visit www.autodesk.com/reseller.

Autodesk® Flame® software integrates true 3D creative tools into an interactive compositing workflow that enables visual effects artists to work with a broader range of 2D and 3D sources while delivering outstanding, effects-rich finished content. Flame 2011 includes new 3D creative tools and workflows to help you tackle today's visual effects challenges with the same speed and interactivity that Flame is known for.

1 Speed and Interactivity

Being creative means working fast. Flame 2011 utilizes GPU technology to help deliver great performance when working with high-resolution, high-bit depth 2D and 3D composites. Nothing breaks the creative process like waiting for frames to update, and when you're working under pressure you want to have the fastest tools. Flame gives you the all-in-one finishing tools you need and performance that helps make the difference when creating high-quality images for television and film.

2 3D-Enabled Creative Toolset

Post-production has evolved to embrace 3D, and Flame 2011 is right there with a toolset that combines interactive compositing tools with the latest 3D technology. Flame has comprehensive, creative 3D finishing tools to help you build great-looking composites that incorporate multi-resolution media sources, multilayer render passes from CG, and true 3D geometry.

Action 3D compositing environment: Action is the core of the Flame 3D creative workflow, providing an interactive 3D design space for visual effects.

Pixel shader rendering and advanced lighting: Flame 2011 features a redesigned GPU-processing pipeline in Action that provides pristine renders with high-quality filtering and hardware anti-aliasing. With precise control over lighting and shading as well as photo-realistic procedural textures, Flame 2011 helps you create composites that look better than ever.

Interchange with 3D: Support for the Autodesk® FBX® interchange format allows bidirectional exchange of metadata with certain 3D applications such as Autodesk® Maya® software. When building 3D composites in Flame, artists can import geometry, cameras, textures, and animations and interactively modify 3D composites in post. Flame 2011 now has the identical camera model to Maya, helping make camera exchanges via FBX more straightforward and provide even more flexibility when working collaboratively to finish 2D or stereoscopic projects.

Multichannel workflow: Flame 2011 provides a productivity boost when working with multichannel OpenEXR files. Direct access to the OpenEXR files from within the application, and the ability to soft import and import individual render layers, helps minimize disruptions when you're focused on creating more complex 3D composites.

Multiple compositing outputs: With Flame 2011, you can generate more types of render passes from Action. Flame can create multiple discrete outputs: occlusions (Z-depth channel, multiple mattes, normal mapping, and stereo left and right eye), giving you more flexibility when building 3D composites.



Image courtesy of Cutting Edge.



Image courtesy of FOUR NINES.



Image courtesy of Brickyard VFX.



Image courtesy of GIANT STEP.



Evian 'Skating Babies,' BETC Euro RSCG, Image courtesy of MPC.

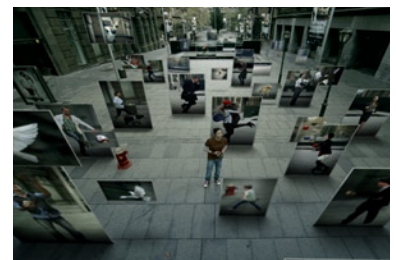


Image courtesy of VIXEN.

3 Stereoscopic Compositing for Television

Flame 2011 helps you move smoothly into stereoscopic finishing by adding tools for viewing, editing, compositing, and finishing stereoscopic content. Now you can use the same proven Flame tools you rely on to help finish stereoscopic 3D composites incorporating live action, CG layers, and true 3D objects.

4 The Autodesk Flame Experience

Used to make some of the best commercial, film, and broadcast content worldwide, Flame is a leader in 3D visual effects, design, and finishing. Flame offers end-to-end creative and technical finishing tools for dependably delivering high-end projects. Because of its renowned performance and efficient workflows, many top companies—and top artists—have built their businesses on Flame.

5 Autodesk Flare

If you're looking for a cost-effective way to take full advantage of your investment in Flame, then consider Autodesk® Flare™ software. Flare offers the same Flame creative tools you already know in a more flexible, software-only configuration available exclusively to Flame owners. Flare is the best way to gain more access to the creative power of Flame when and where you need it. Flare is 100 percent compatible with Flame and is flexible enough to work as a creative companion to your Flame suite, as a stand-alone creative station, or as a mobile solution for on-set VFX supervision.

6 Efficient Autodesk Workflows

Flame is 100 percent compatible with Autodesk® Smoke® software and is designed to easily share multilayer timelines and media with Autodesk® Lustre® software. Minimize time wasted translating or copying data with a proven creative post-production pipeline for editorial finishing, 3D visual effects, and color grading from Autodesk.

7 Protect Your Purchase with Subscription

Autodesk® Subscription for Flame is your path to the latest software, technical support, and extension releases. Subscription delivers the latest features, so it is the easiest way to access the latest Flame technology without worrying about upgrading and unpredictable expenditures. All of this comes with a direct link to Autodesk, so you can always be connected, informed, and one step ahead.



Image courtesy of Ministry of Illusion.



Image courtesy of Cutting Edge.



Image courtesy of Serena Digital SL.