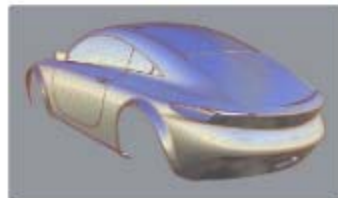
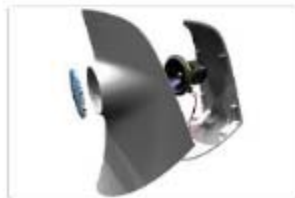
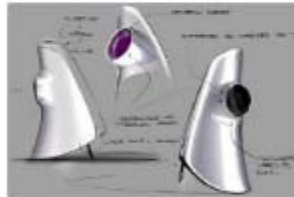
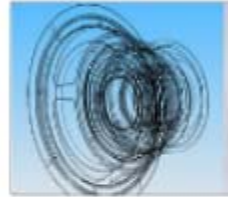
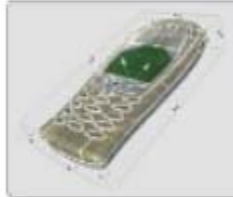
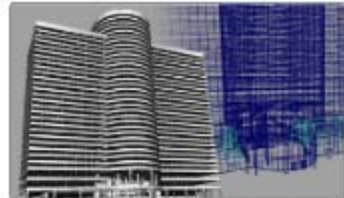
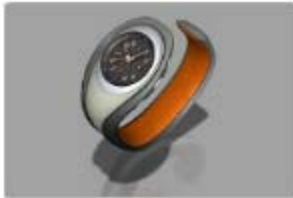


Autodesk DirectConnect 2009



What's new this release



This section outlines enhancements for the 2009 version (released May 2008), in addition to various bug fixes.

What's new

DirectConnect is now IP v6 compliant.

We also support the following in this version of DirectConnect:

- AutoCAD 2009 files can be imported and exported via DWG DXF
- Autodesk Inventor file importing
- Autodesk Inventor on 32-bit and 64-bit Windows
- UGS NX on 64-bit Windows

- A Mac native Intel binary version; however, it will not run on older PPC Macs
- MacOS 32-bit
- Wildfire 4.0/Granite 5.0
- JT 4.0

Beyond all the new things we support, Autodesk Opticore Realizer and Autodesk Opticore Studio now come with DirectConnect.

Autodesk Opticore Realizer and Autodesk Opticore Studio run on Microsoft Vista 32-bit and 64-bit editions.

The following list of file formats can now be imported into these products:

- SolidWorks
- Pro/ENGINEER
- CATIA V5
- Autodesk Inventor
- Cosmo
- STEP
- STL
- DWG/DXF
- IGES
- Open Inventor
- JT

NOTE For licensing information, please see Supported products and translators.

Release notes and improvements

- To use the DirectConnect Inventor translator, install Inventor or Inventor View, then run it and select File > Open, before using DirectConnect to translate your data.

- If working on Vista and wanting to use the DirectConnect Inventor translator, you must run the Inventor View as “Administrator”, before the data can be translated.

NOTE Running the Inventor View as “Administrator” is different from running it from an Administrator Account.
