

What's New In Buzzsaw

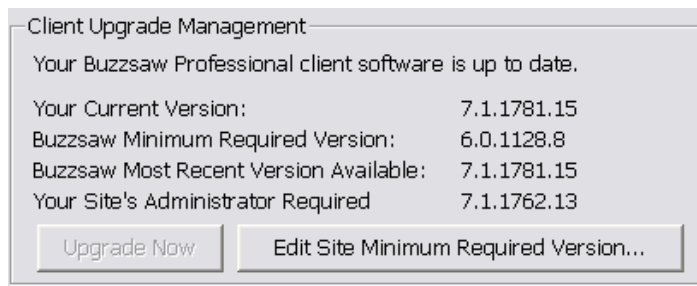
Following are the highlights of the new features in Buzzsaw 7.2. For more detailed information, refer to the Buzzsaw online help and training manuals.

Enhanced Security Controls for Site Administrators *(Buzzsaw Professional and Buzzsaw Standard)*:

Industry-standard configurable security controls include:

- Password Age: require password changes at defined intervals
- Strong Passwords: require special characters and unique passwords
- Automatically disable members after failed login attempts
- Define session time outs (hours, minutes)
- Automatically disable inactive members
- IP Restrictions: limit how users can access Buzzsaw

Note! Many of these features require all site members to have the latest version of Buzzsaw installed. Use the "Client Update Management" feature to require your site members to update their Buzzsaw client software.



New Security Tab in Site Administration



Password Age: Require password changes at defined intervals. You may choose to provide “exemptions” to some site members.

General | Members | Groups | Companies | Attributes | Permissions | Activity Log | Statistics | Limits | Security

Site Members must change their passwords every days

Exemptions _____

The following members are exempt from changing their passwords

Password Requirements: Require special characters and unique passwords. You may select some or all of the “Strong Password” options.

General | Members | Groups | Companies | Attributes | Permissions | Activity Log | Statistics | Limits | Security

Enable "Strong Passwords" [learn more](#)

Passwords must:

Contain at least one special character (examples: !@#%&^&*)

Passwords must not:

Contain any words four characters long or greater found in a standard English dictionary

Contain user name, first name, or last name of the member

New passwords must differ significantly from: [learn more](#)

the past passwords

any password in the past months

Enforcement _____

New password requirements will go into effect:

Immediately - All members will be required to update their passwords the next time they log in

Upon password creation - Members will be required to meet new password requirements the next time their password expires, or whenever creating a new password, but until then may continue logging in using their existing passwords

Login: Determine if password assistance and “remember this password” options are available to site members. Configure the number of failed login attempts allowed.

The screenshot shows the 'Security' tab in the Autodesk Buzzsaw administration interface. The left sidebar contains a list of settings: Password Age, Password Requirements, Login, Session Time Outs, Member Inactivity, IP Restrictions, and File Transfers. The 'Login' setting is selected. The main content area has the following options:

- Enable automated password assistance ("password reminder")
- Disable member after failed login attempts
- Automatically re-enable members:
 - After days
 - Never - Disabled members must be re-enabled by their Site Administrator
- Enable "Remember this Password"

At the bottom right, there are three buttons: Apply, Reset, and Help.

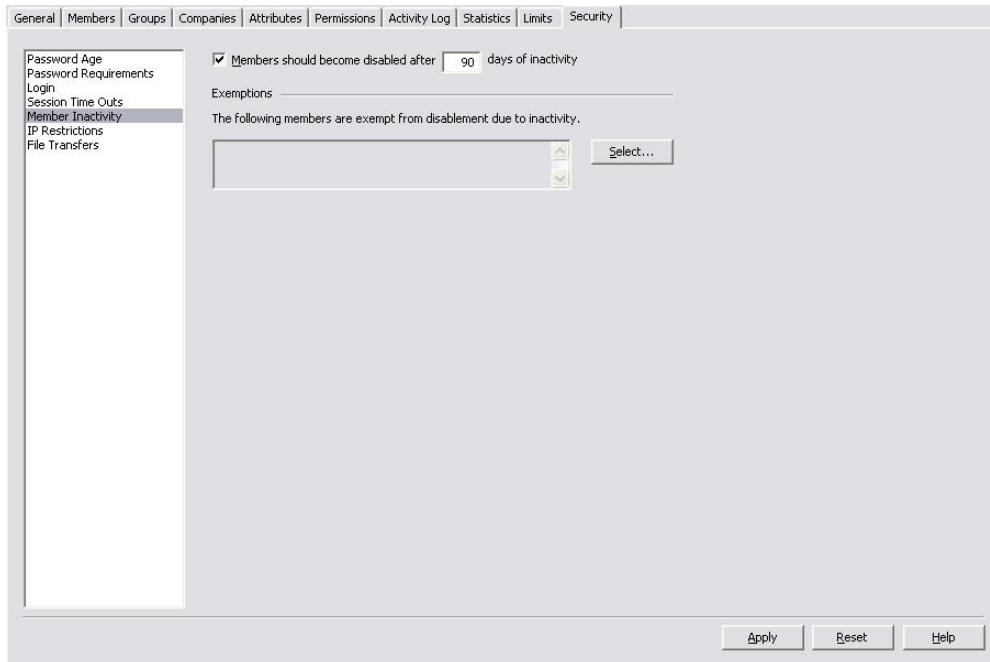
Session Time Outs: Automatically log out site members after a predetermined period of inactivity.

The screenshot shows the 'Security' tab in the Autodesk Buzzsaw administration interface. The left sidebar contains a list of settings: Password Age, Password Requirements, Login, Session Time Outs, Member Inactivity, IP Restrictions, and File Transfers. The 'Session Time Outs' setting is selected. The main content area has the following options:

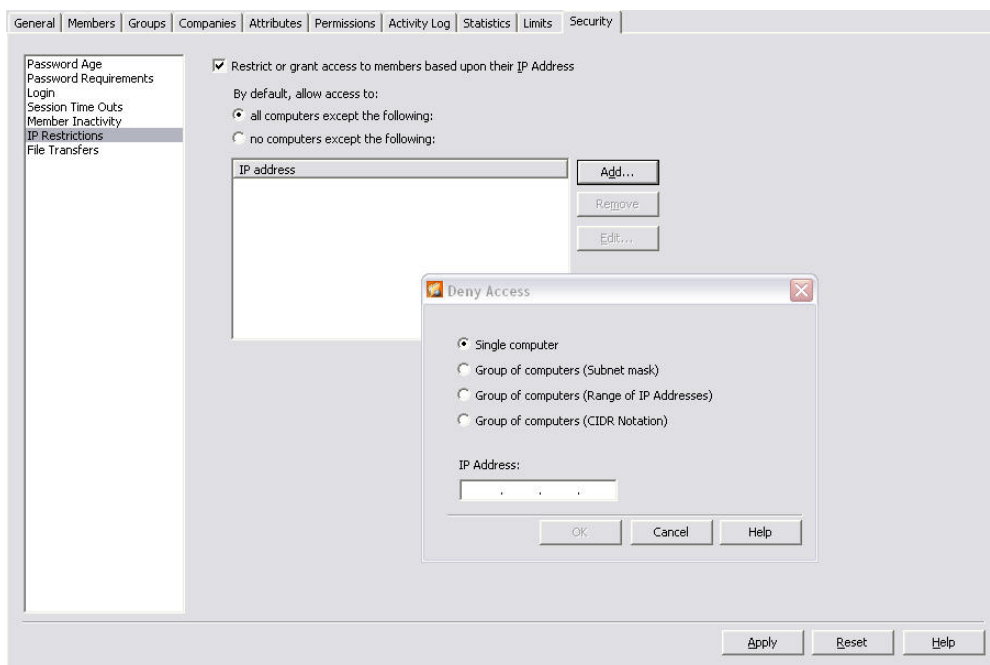
- Access sessions should time out after the following periods of inactivity:
 - Software access (maximum 8 hours): hours minutes
 - Web access: minutes
- Note: Sessions will not time out during active functions, such as:
 - File Upload
 - File Download
 - Lengthy Administrative Functions
 - Page rendering

At the bottom right, there are three buttons: Apply, Reset, and Help.

Member Inactivity: Automatically disable site access for inactive members. You may choose to implement this setting for some or all site members.



IP Restrictions: Limit how site members may access your project data.



Autodesk and Buzzsaw are registered trademarks or trademarks of Autodesk, Inc., in the USA and other countries. All other brand names, product names, or trademarks belong to their respective holders.

© Copyright 2006 Autodesk, Inc. All rights reserved.