

A 3D architectural rendering of a steel truss structure. The truss is composed of dark red steel members forming a complex lattice. Concrete slabs are shown in a light gray color, resting on the truss. The structure is shown from an elevated perspective, highlighting the intricate geometry of the truss and the placement of the slabs. The background is a solid black color.

What's New in Autodesk® Revit® Structure 2010

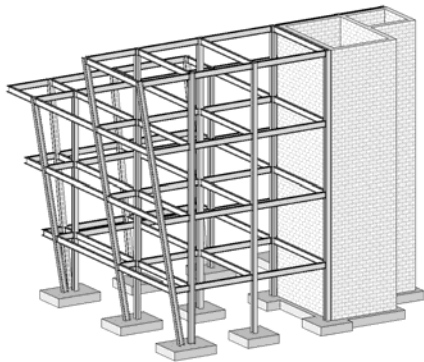
Top Features

Autodesk Revit Structure 2010

Modeling and Analysis

Enhanced Modeling Capabilities

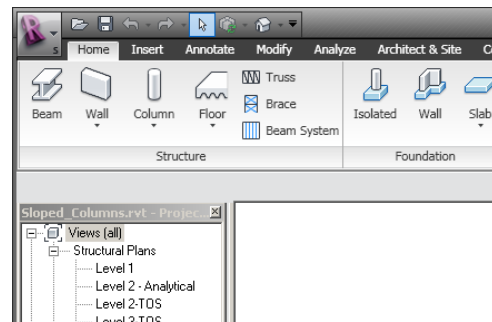
- Slanted columns
- Conceptual form modeling
- **S** Bridge modeling
- **S** Steel connection modeling
- **S** Conceptual form analysis



User Interface

Improved Productivity

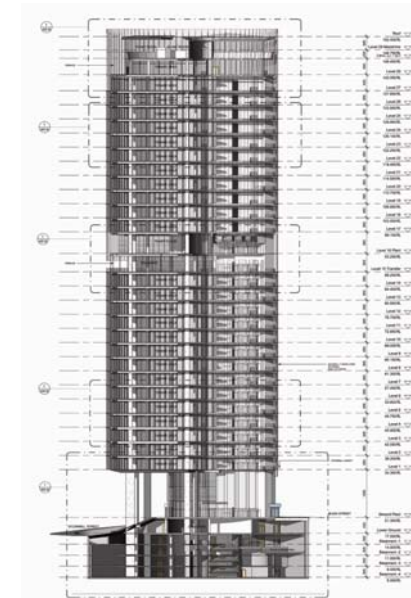
- Ribbon
- Application menu
- Quick Access toolbar
- Autodesk® Seek web service
- Enhanced tooltips

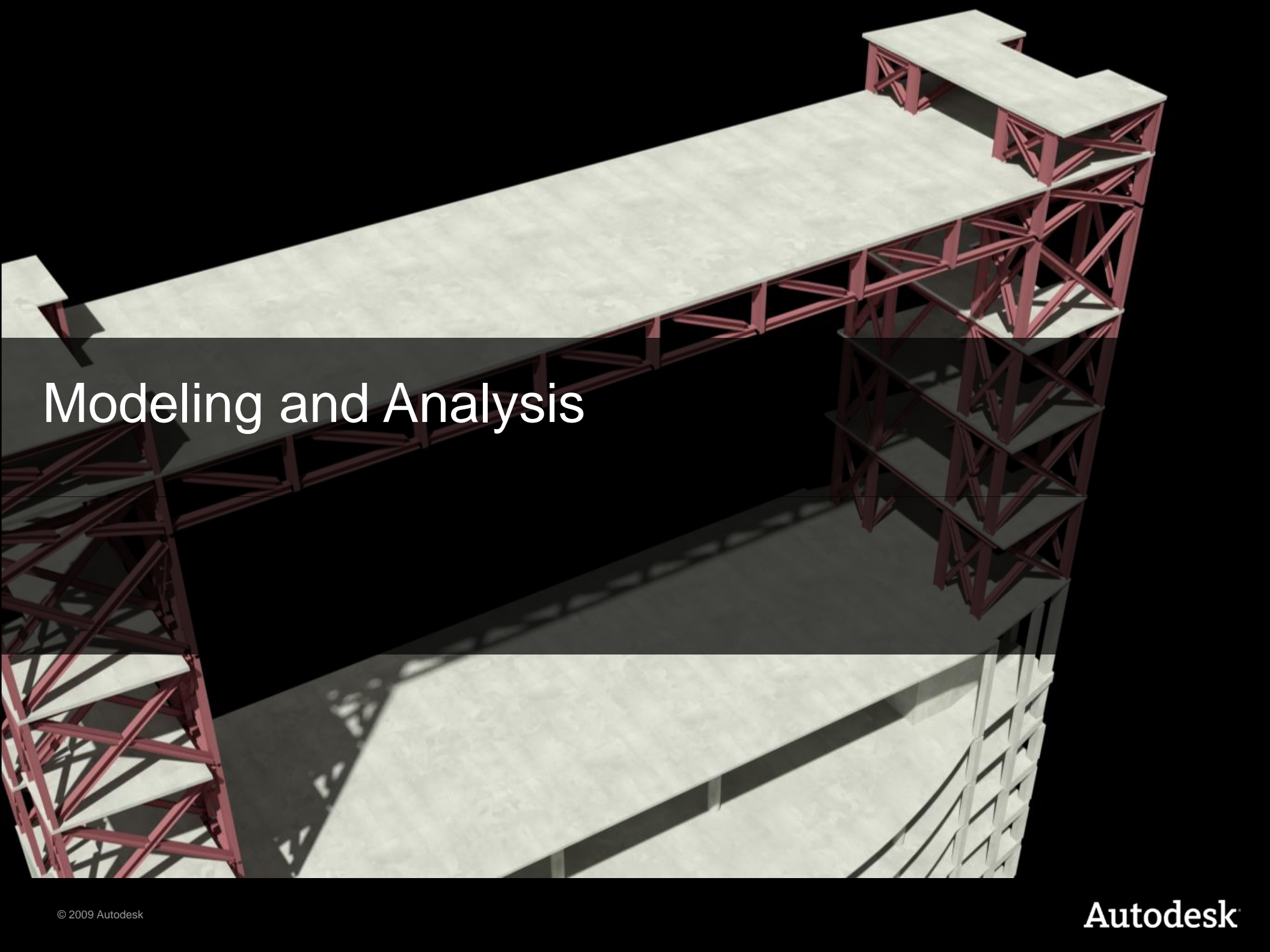


Performance and Interoperability

Amplify Your Efforts

- API (application programming interface) enhancements
- Native 64-bit support



A 3D architectural rendering of a building's structural frame. The structure features a prominent red truss system supporting multiple levels of concrete slabs. The slabs are light gray, and the truss members are a dark red color. The perspective is from an elevated angle, showing the depth and complexity of the truss structure. A semi-transparent dark gray horizontal band is overlaid across the middle of the image, containing the text "Modeling and Analysis".

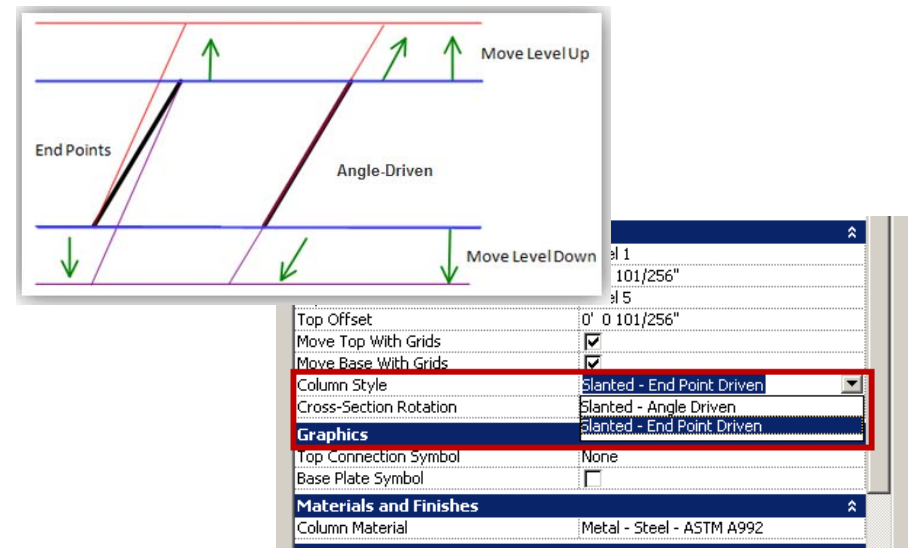
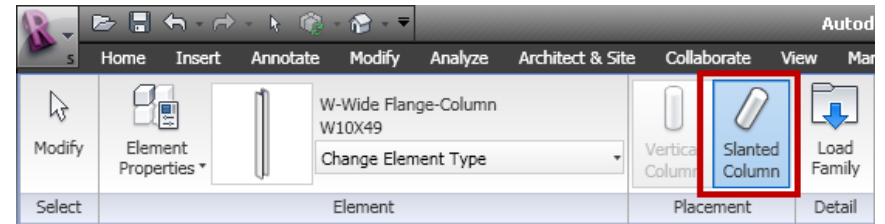
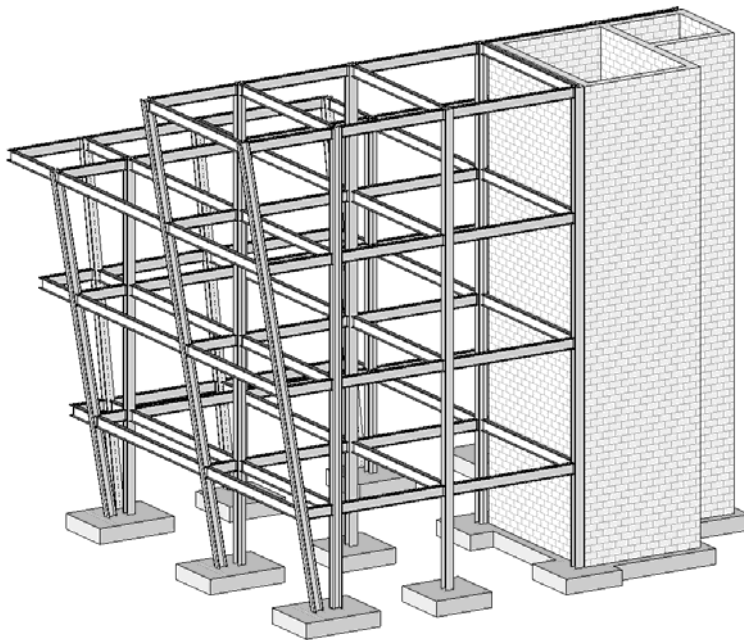
Modeling and Analysis

Modeling and Analysis

Autodesk Revit Structure 2010

Slanted Columns

- 2D and 3D creation
- New column style parameter
 - Slanted—endpoint driven
 - Slanted—angle driven



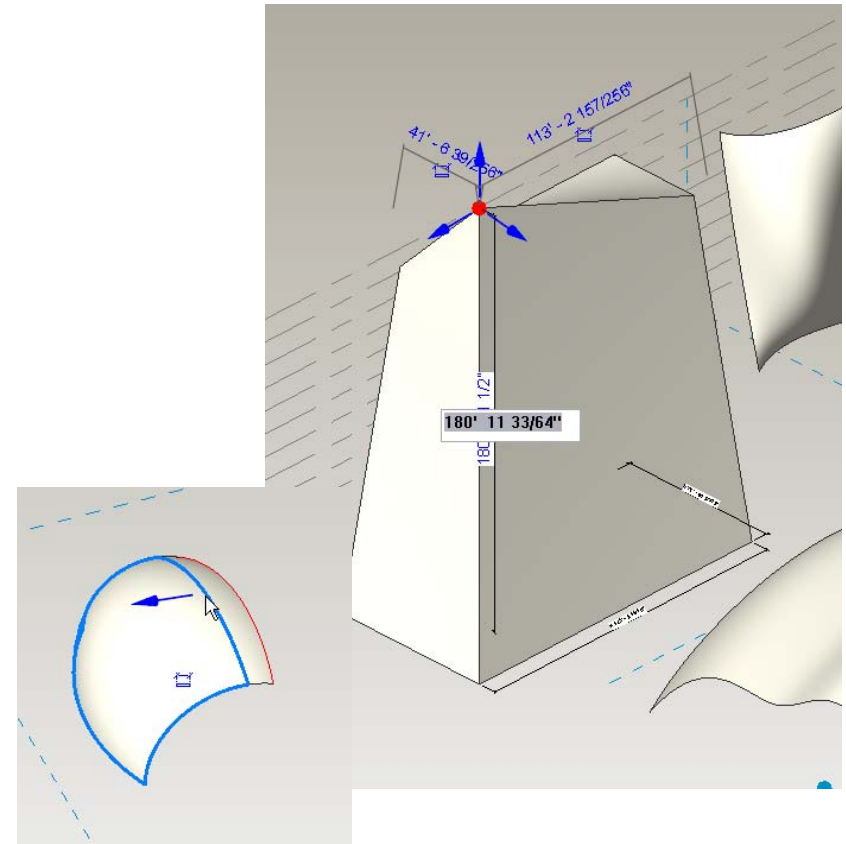
More efficient tools for modeling complex structures.

Modeling and Analysis

Autodesk Revit Structure 2010

Conceptual Form Modeling

- Intuitive and Flexible Form-making
 - Simple form creation with one button (extrude, sweep, revolve)
 - Direct manipulation
 - Easier to add constraints and rules
 - No more modes



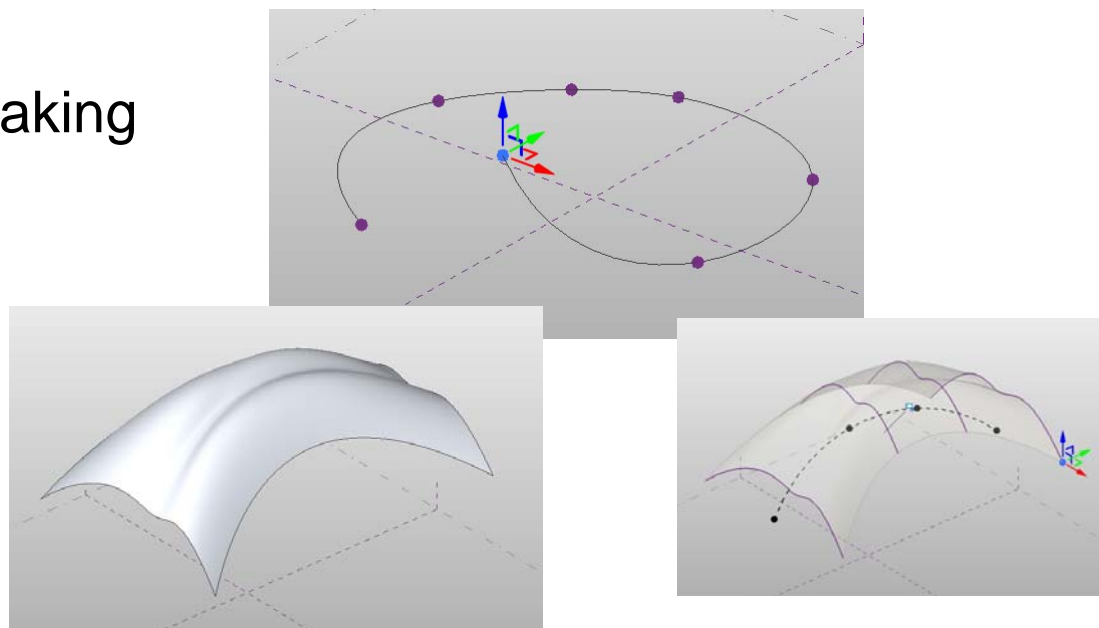
Easy-to-use modeling tools, with a higher level of control and accuracy.

Modeling and Analysis

Autodesk Revit Structure 2010

Conceptual Form Modeling

- Intuitive and Flexible Form-making
 - Spline by points
 - Complex surface modeling
 - Add edge and profile
 - X-ray mode



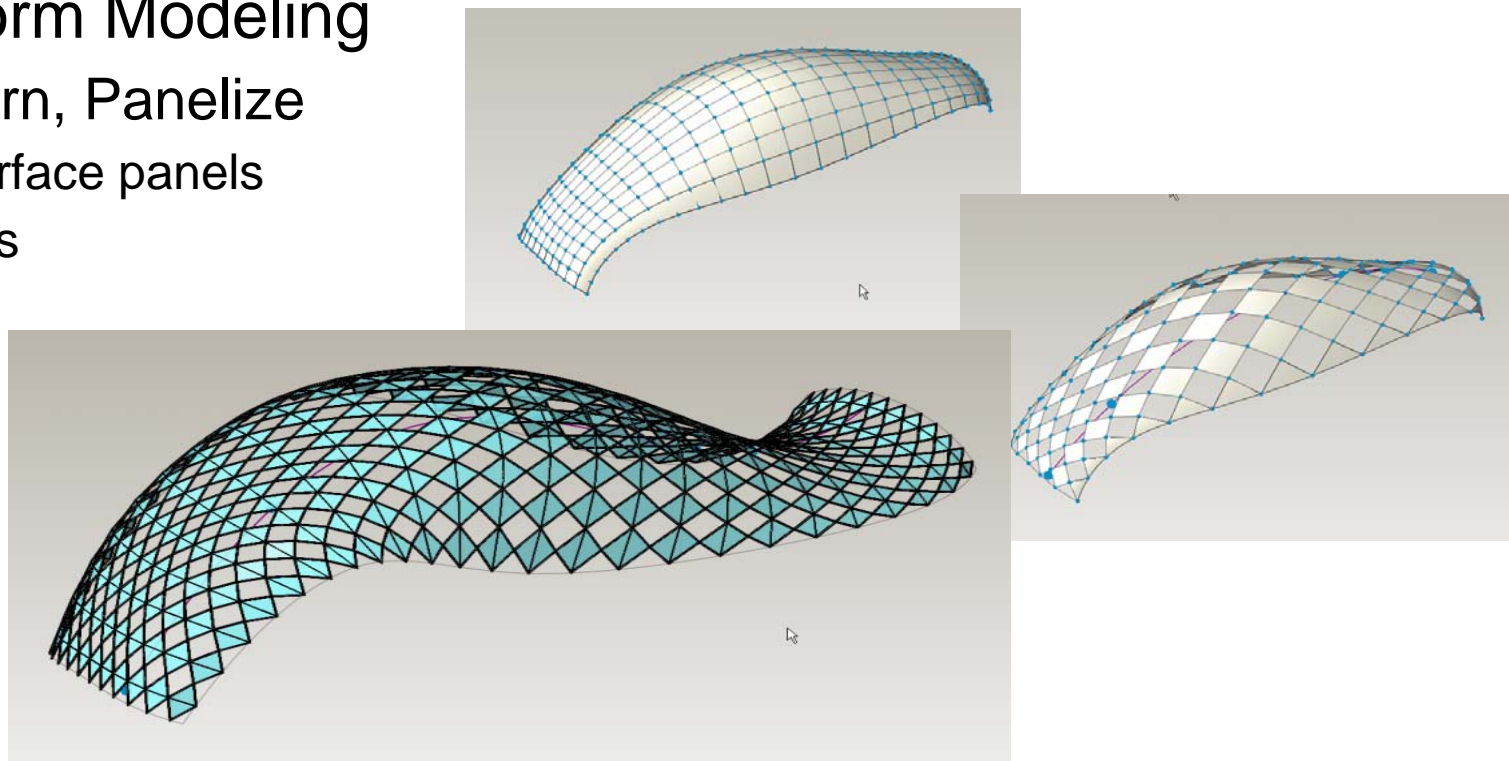
*Expanded toolset and greater levels of control
for your complex modeling challenges.*

Modeling and Analysis

Autodesk Revit Structure 2010

Conceptual Form Modeling

- Divide, Pattern, Panelize
 - Establish surface panels
 - Define nodes



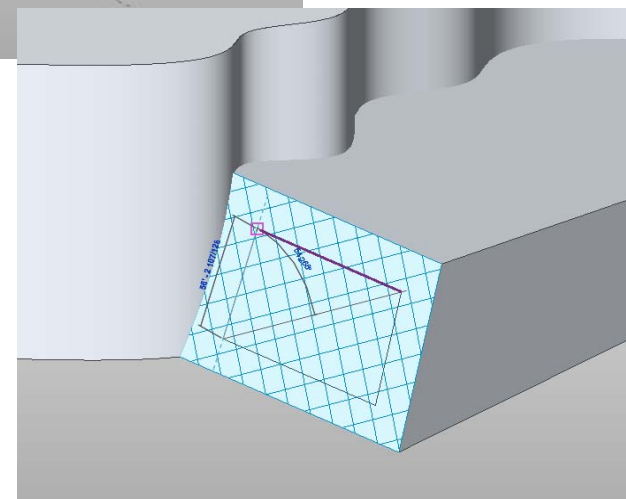
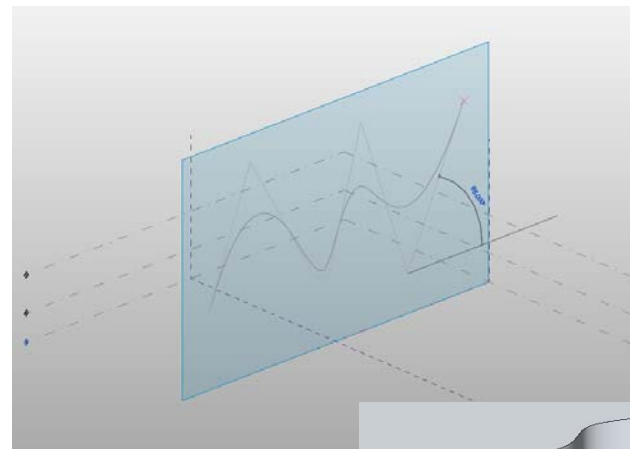
Divide and pattern your surfaces. Add real building detail for fabrication, construction, and simulation.

Modeling and Analysis

Autodesk Revit Structure 2010

Conceptual Form Modeling

- Sketching Enhancements
 - Automatic workplane detection
 - 3D levels and reference planes



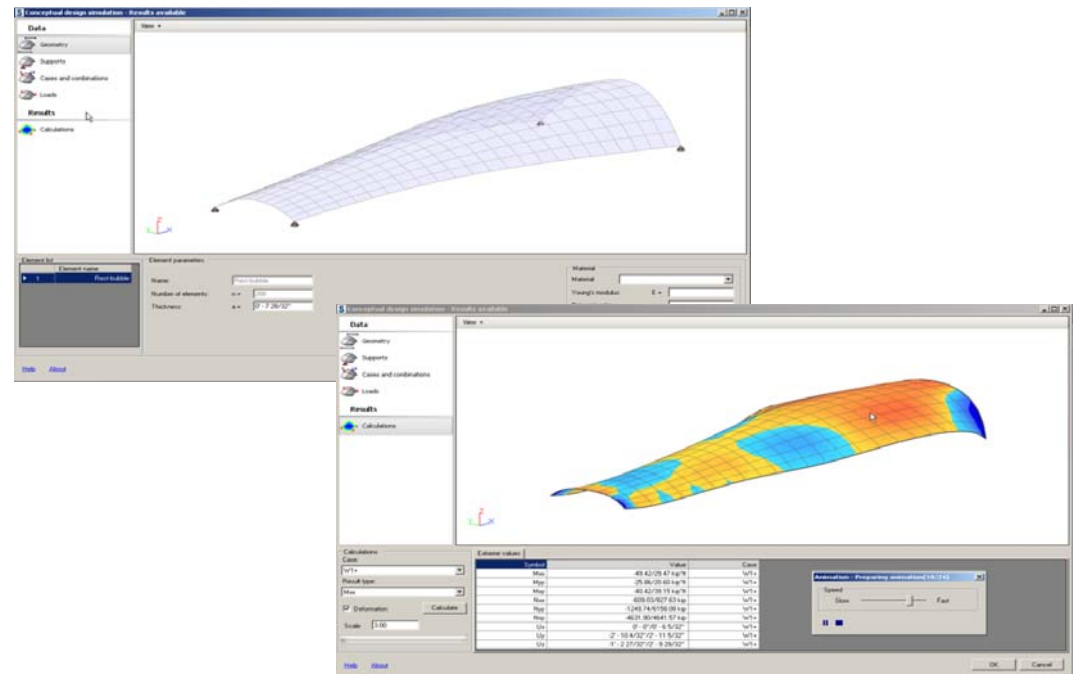
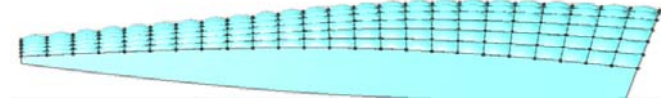
Work more freely and intuitively in 3D space.

Modeling and Analysis

Autodesk Revit Structure 2010

Conceptual Form Simulation

- Load and analyze complex forms
- Simulate support conditions
- Simulate wind loads
- Make deformation animation
- View tabular and graphical results
- *Requires Subscription to Autodesk Revit Structure 2010 software*



Perform preliminary analysis on complex shapes earlier in the design process.

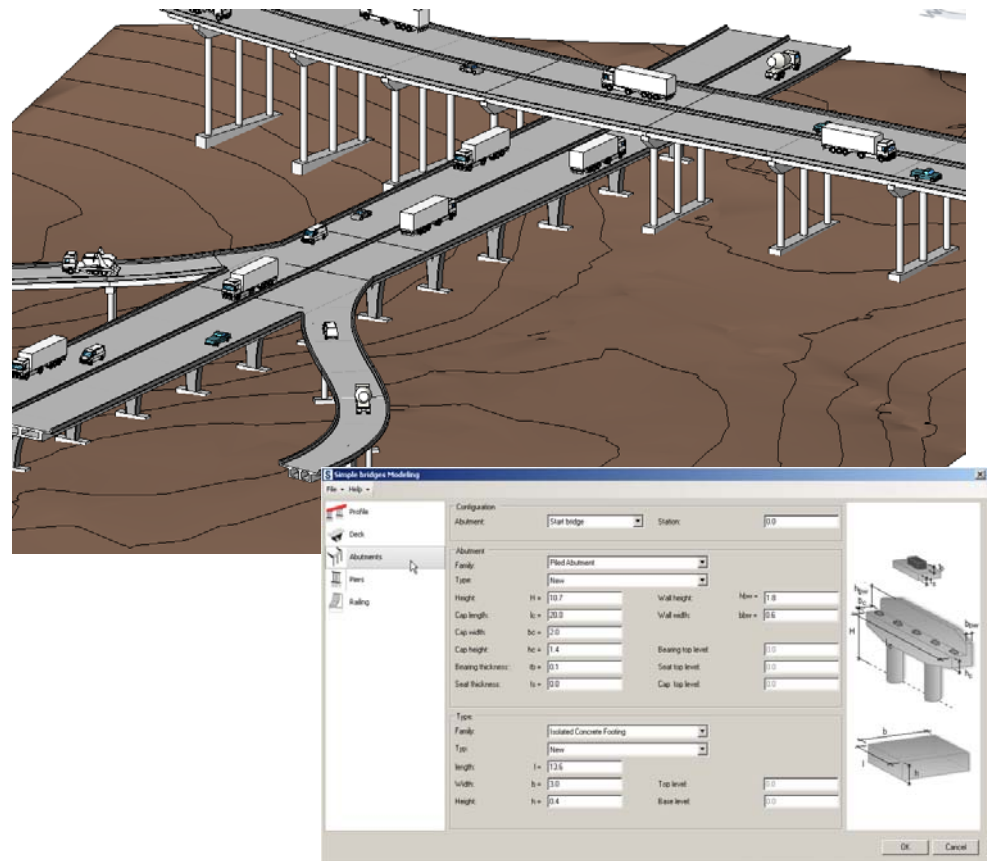


Modeling and Analysis

Autodesk Revit Structure 2010

Bridge Modeling

- Model parametric bridge structures:
 - Abutments
 - Road decks
 - Piers
 - Railings
- Import road alignment from civil engineers using LandXML files
- *Requires Subscription to Autodesk Revit Structure 2010 software*



BIM for bridge modeling.



Autodesk

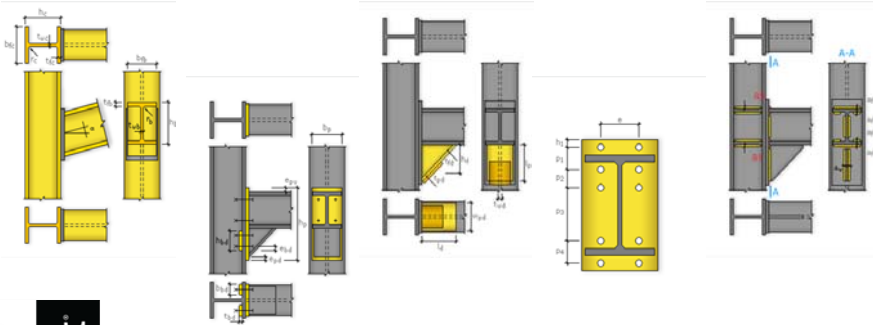
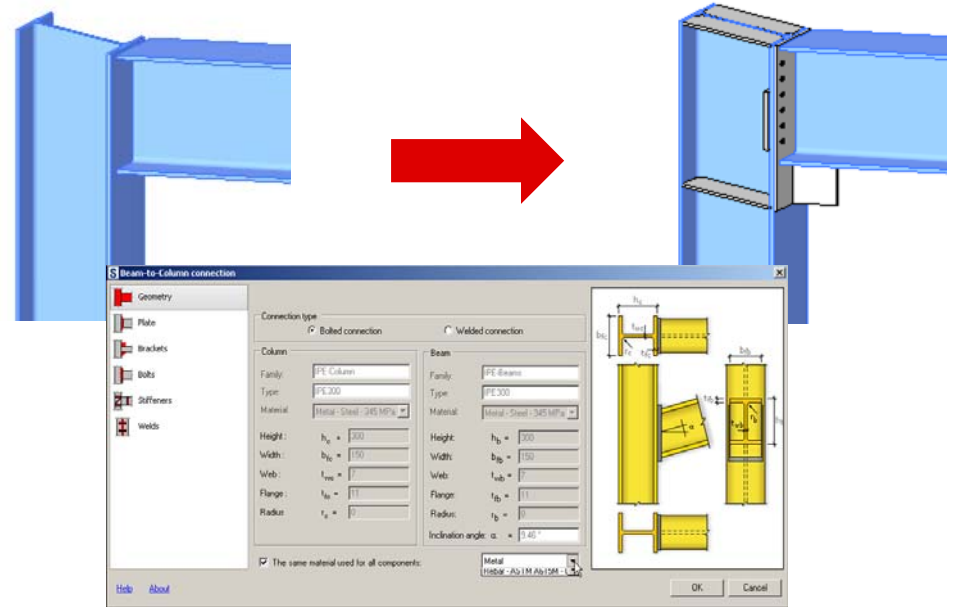
Subscription

Modeling and Analysis

Autodesk Revit Structure 2010

Steel Connection Modeling

- 3D Connections
 - Beam-to-column end plate
 - Column case connection
- *Requires Subscription to Autodesk Revit Structure 2010 software*



Extend BIM to typical steel connections.



Autodesk

Subscription

A 3D architectural rendering of a building's structural framework. The image shows a complex steel truss system in a reddish-brown color, supporting several levels of light-colored concrete slabs. The structure is viewed from an elevated perspective, showing the intricate network of beams and girders. The background is solid black, which makes the structure stand out. A semi-transparent dark grey horizontal bar is overlaid across the middle of the image, containing the text 'User Interface'.

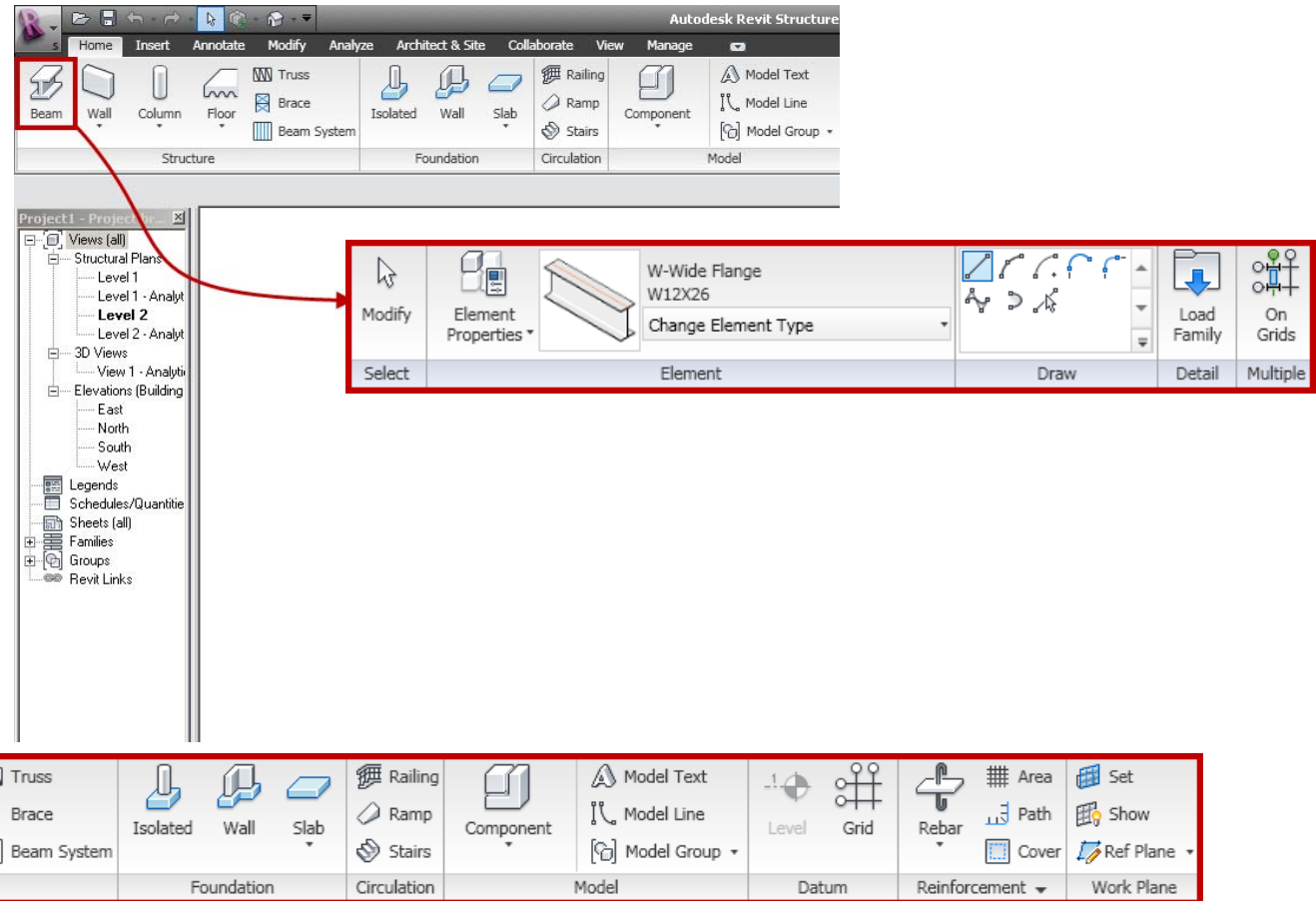
User Interface

User Interface

Autodesk Revit Structure 2010

Ribbon

- All tools in one place
- Task-based organization
- Contextual tabs



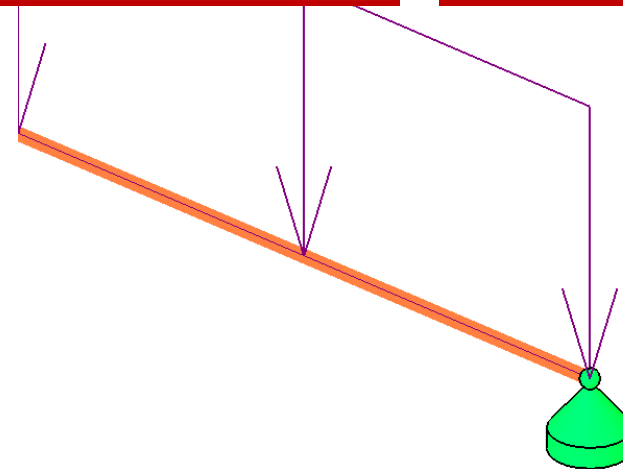
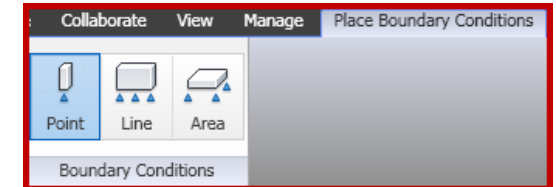
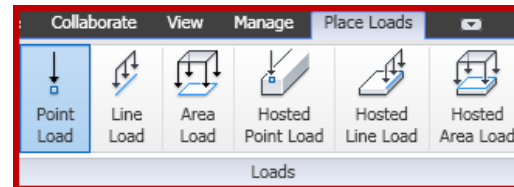
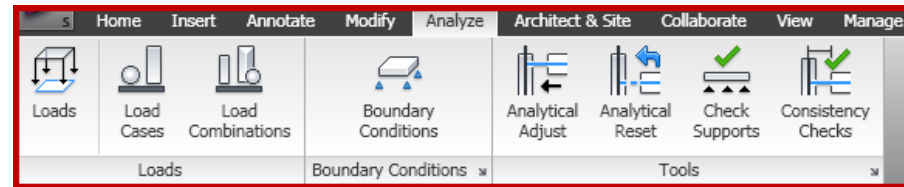
Find your tools more easily and help improve your workflows.

User Interface

Autodesk Revit Structure 2010

Dedicated Analysis Tools User Interface

- All tools in one place
- Task-based organization



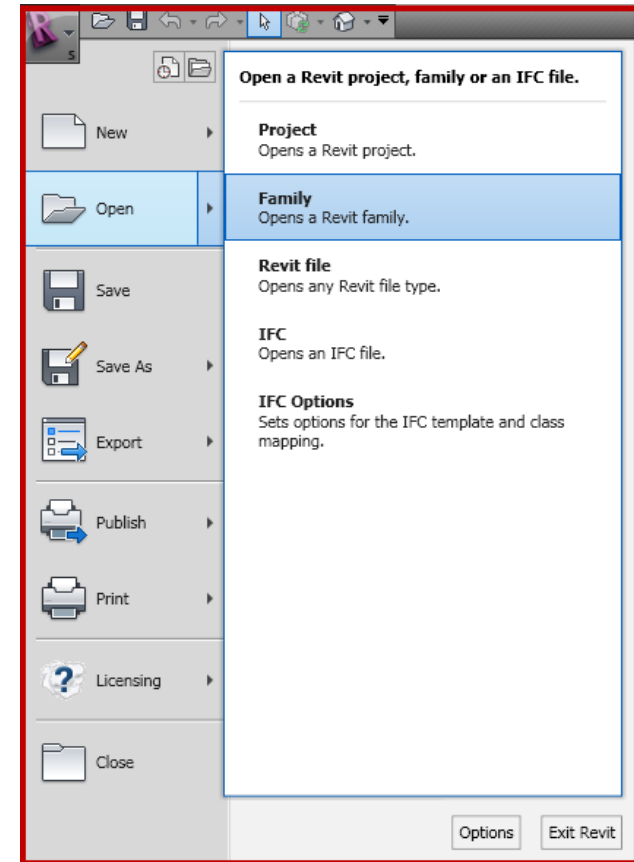
Find your tools more easily and help improve your workflows.

User Interface

Autodesk Revit Structure 2010

Application Menu

- Access all Input/Output operations in one place
- Sort and access recent documents



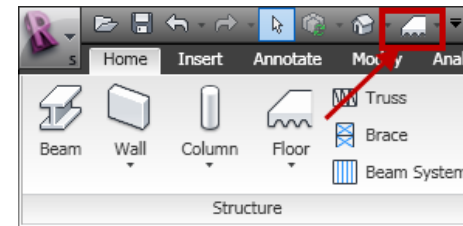
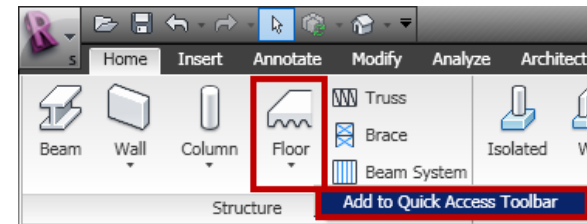
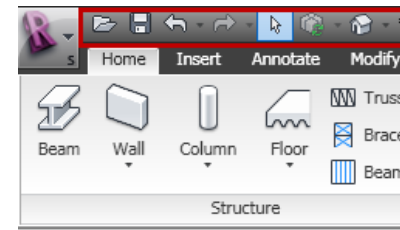
Organized access to commonly used project operations.

User Interface

Autodesk Revit Structure 2010

Quick Access Toolbar (QAT)

- Add commonly used tools
- Easily customizable (via Right+Click)



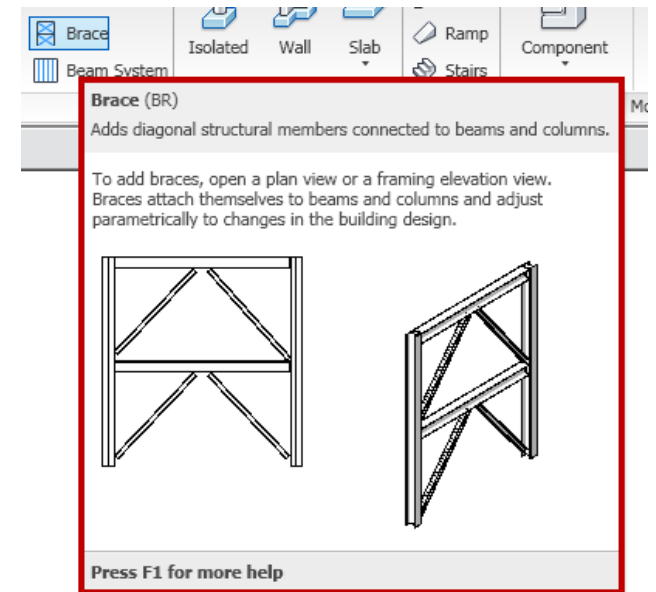
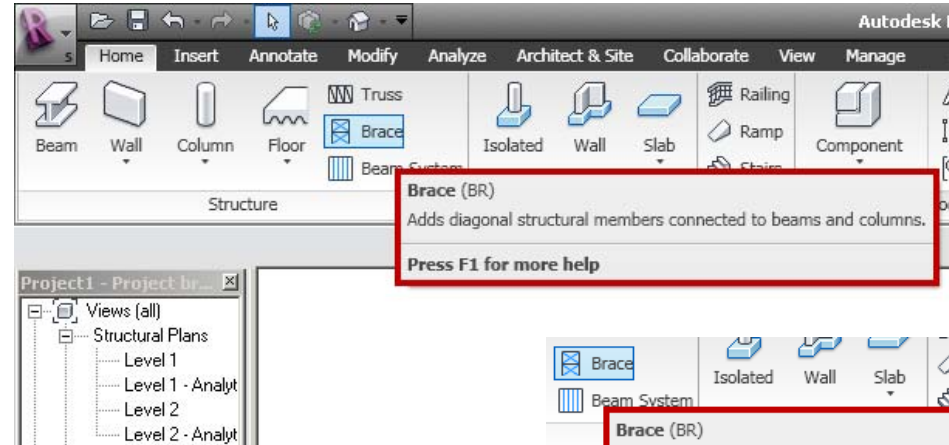
Immediate access to the tools you use most often.

User Interface

Autodesk Revit Structure 2010

Enhanced Tooltips

- Rollover functionality
- Multilevel support
- Context-sensitive help
- Helpful 3D diagrams



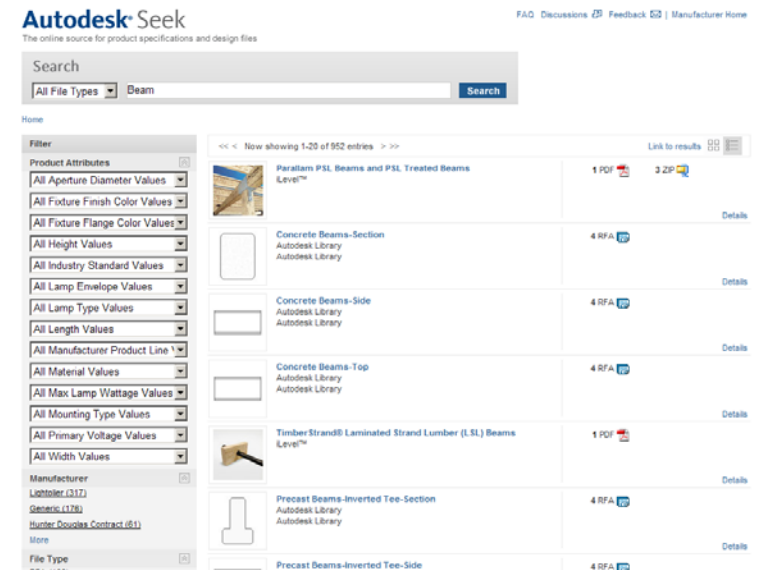
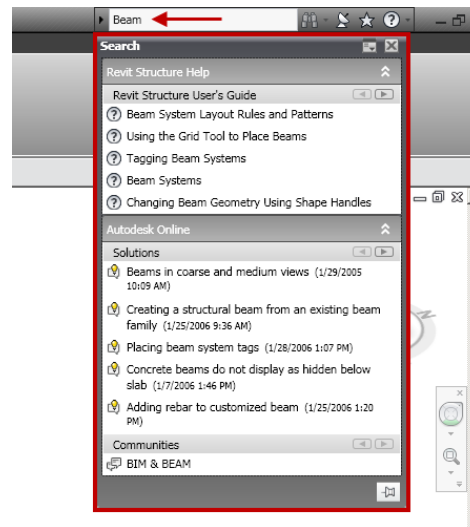
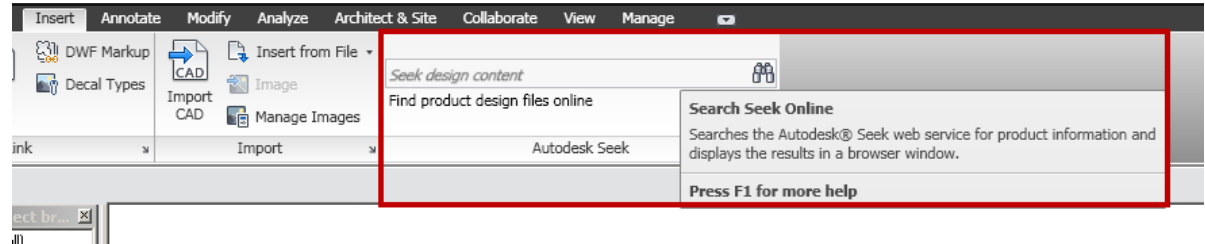
Feedback matched to your level of familiarity with a feature.

User Interface

Autodesk Revit Structure 2010

Utilities

- InfoCenter
- Autodesk® Seek web service



Access web content and solutions right from the Autodesk® Revit® software user interface.

A 3D architectural rendering of a building's structural frame. The structure is composed of a complex network of red steel trusses and beams, supporting several light-colored concrete slabs. The view is from an elevated perspective, looking down and across the structure. A semi-transparent dark grey horizontal band is overlaid across the middle of the image, containing the text "Performance and Interoperability" in white. The background is a solid black color.

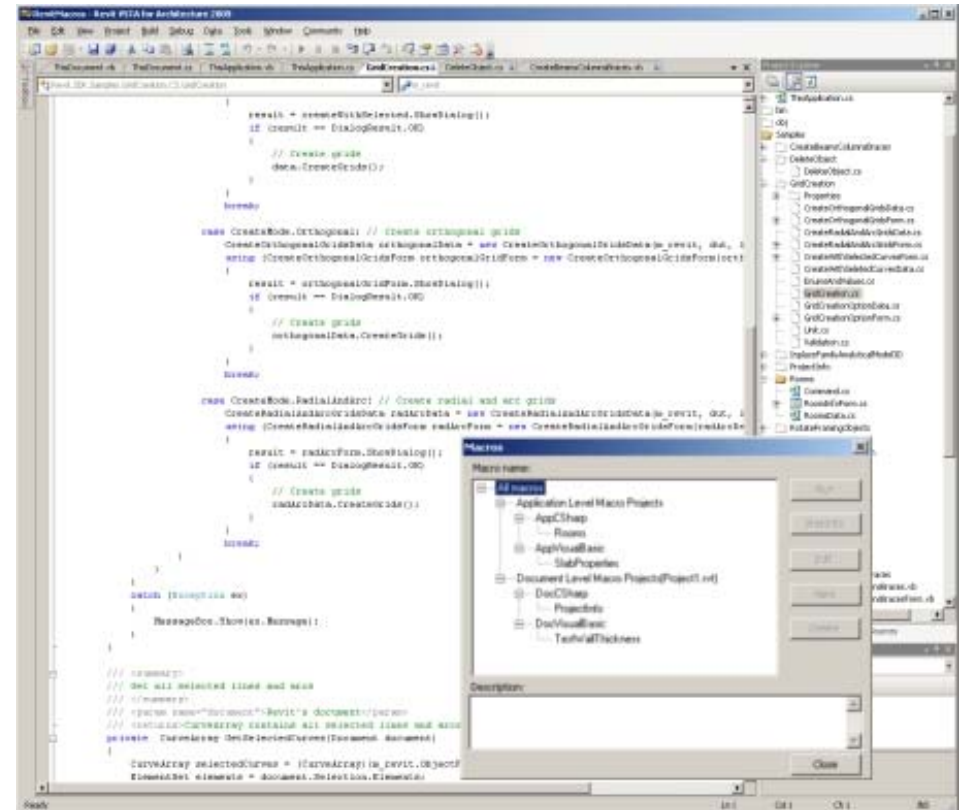
Performance and Interoperability

Performance

Autodesk Revit Structure 2010

API Enhancements

- Expanded API (application programming interface)
 - Conceptual design API
 - Family API
- Automate creation of large content libraries



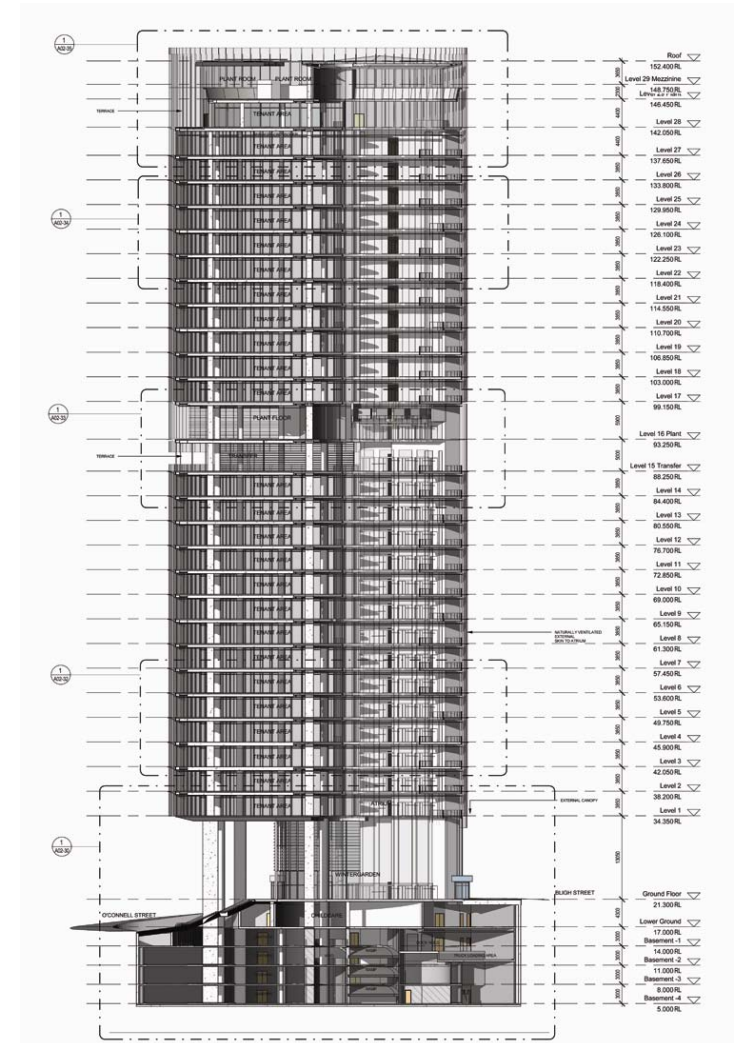
Automate the creation of large content libraries.

Performance

Autodesk Revit Structure 2010

Performance

- Take advantage of the full computing power of your PC
- Improved stability



More efficient, stable, and productive.

Autodesk, Revit, and Robot are registered trademarks or trademarks of Autodesk, Inc., and/or its subsidiaries and/or affiliates in the USA and/or other countries. All other brand names, product names, or trademarks belong to their respective holders. Autodesk reserves the right to alter product offerings and specifications at any time without notice, and is not responsible for typographical or graphical errors that may appear in this document.

© 2009 Autodesk, Inc. All rights reserved.

Autodesk®