

Jasmax

Customer Success Story

Autodesk® Revit® Architecture  
Autodesk® 3ds Max® Design  
Autodesk® Navisworks® Manage  
Autodesk® Ecotect® Analysis

Autodesk design solutions help us to highlight our strengths and improve our ability to win business. More accurate and comprehensive 3D models enable us to increase sustainability and efficiency in our designs. These models enable us to readily share our designs across the team and better communicate our vision to our clients.

—Melanie Tristram  
Revit Manager  
Jasmax

# Communicate. Coordinate. Construct.

Autodesk products help Jasmax to improve workflow and create more sustainable designs.



NZI Building, Fanshawe Street, Auckland.

### Project Summary

Jasmax was formed in 1989 with the merging of three architectural practices, the largest of which was JASMAD, originating in 1963. The practice has evolved into a multidisciplinary firm, working across the disciplines of architecture; landscape, interior, and urban design; and project master planning. Jasmax's significant body of work includes schools, tertiary institutions, hospitals, stadiums, workplaces, commercial buildings, motorway extensions, and bridges. With studios in Auckland, Wellington, and Christchurch, Jasmax is extensive, employing more than 180 people.

### The Challenge

Recent commercial multidisciplinary building projects Jasmax faced include the base build and interior fitout of the New Zealand Insurance (NZI) Centre in Auckland, the five-story Bank of New Zealand offices in Wellington, and the development of the new Jasmax Auckland office. With projects often conducted across the firm's

three offices and a range of disciplines, Jasmax needed a solution to enable the communication of integrated designs to the entire project team, where all team members could easily access, understand, and coordinate a vast range of design elements, as well as contend with a large number of on-site construction project queries.

The complexity of some of the firm's projects required an effective data collaboration solution. Traditionally, Jasmax had scheduled project information, such as door and furniture schedules, in spreadsheet application software. This proved time-consuming and difficult to manage when client requirements evolved as the brief was developed, or when designers required a fast turnaround on last-minute requests and alterations.

In addition, Jasmax has embraced the increased demand for sustainable designs, both within the private and government sectors. To meet this demand, the firm needed to maximise sustainability in its designs without compromising on quality or resorting to energy analysis conducted by third-party specialist agencies.

Autodesk®

# Jasmax's vision is to continue using Autodesk products to help remain competitive and meet growing market demands.

## The Solution

As an Autodesk customer for 20 years, Jasmax has adopted a range of Autodesk® solutions across various business disciplines, including Autodesk Building Information Modeling (BIM) tools to help streamline design workflow and develop more reliable and sustainable designs. Jasmax was an early adopter of BIM tools and invested heavily in order to help bring the benefits of BIM to all of its projects and clients.

Jasmax created a role for a BIM specialist to help capitalise on the benefits of Autodesk BIM solutions as demand increased. In 2009, Jasmax appointed Michelle Leonard as a BIM specialist to work alongside the Revit manager, Melanie Tristram, to streamline projects that use BIM and Autodesk® Revit® Architecture software. Autodesk reseller AEC Systems also helped to enhance what they do. "They understand and engage with our business to provide a personalised service above and beyond the standard reseller," says Tristram.

## Environmental Analysis

Jasmax employed Revit Architecture software to develop the base build and interior designs for the 5 star Green Star-rated NZI Centre in Auckland. Autodesk® 3ds Max® Design visualisation software was used to help prepare more near realistic and accurate models of the base build and interior fitout. The same was utilised to develop base build and interiors for the Bank of New Zealand building in Wellington.

Revit Architecture helped to provide a comprehensive 3D model of the proposed extension and refurbishment of the Jasmax Auckland office. Its visualisation tools helped the team to more accurately display how the proposed space would appear and to better communicate the design to senior management and employees. Autodesk® Ecotect® Analysis software was used to conduct daylight analysis, helping the team to assess the effects the structure would have on its surrounding environment.

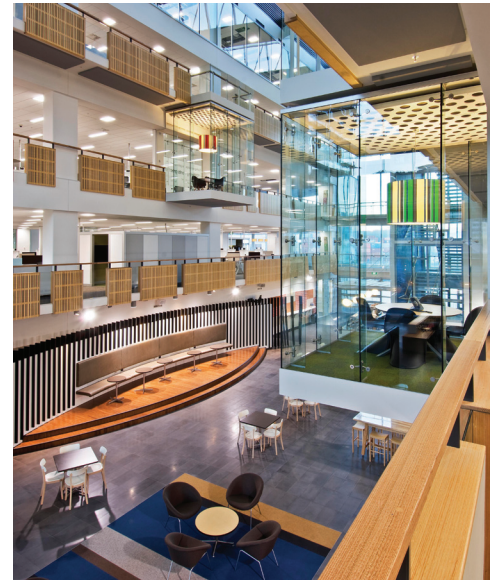
Autodesk® Navisworks® Manage software was used throughout the project for clash detection in the 3D models and for the time phasing of major developments in master plans.

## The Result

Working with a 3D model across multiple offices and project teams has helped Jasmax to streamline workflow. When developing the designs for the five-story Bank of New Zealand building, the BIM tools in Revit Architecture helped designers to track and visualise changes in the models, despite the team being in different regions.

"Using Revit Architecture helps our offices to more effectively communicate data based on a consistent framework," says Leonard. "We can work more collaboratively with consultants when communicating through 3D models in Revit Architecture. It is an essential tool that helps us to develop a more accurate and refined result for clients."

The parametric change engine in Revit Architecture enables Jasmax to create automatic updates to changes, rather than undergoing the laborious task of manually changing each effected area of the design during development stages. "We can now quickly add or remove walls and change the lighting settings while automatic updates are made throughout. We can view different design iterations to help choose the best outcome for the final design," says Leonard. Revit Architecture helps the firm to develop detailed, accurate 3D models, enabling contractors to more clearly visualise and understand the design intent. This has assisted to significantly reduce on-site queries. "It is often difficult for clients to visualise spaces from plans and elevations. However, using BIM helps make it easier for clients to understand the design. It has been of huge benefit to Jasmax with the resolution of details and reduction of conflicts on-site," says Tristram.



BNZ Atrium, Wellington.

## Stay Competitive

As clients continue to increase their knowledge and expectations of sustainable designs, Jasmax is committed to further integrate Autodesk Ecotect Analysis\* into projects by the use of its energy and material analysis tools. "The future of architectural designs will rely heavily on sustainability, and will become embedded in our everyday workflow and procedures. We look forward to using Ecotect Analysis to help create more sustainable designs," says Tristram.

Jasmax's vision is to continue using Autodesk products to help remain competitive and meet growing market demands, as well as stay current with the latest BIM products to expand their offerings and services.

For more information, visit [www.autodesk.com.au/revit](http://www.autodesk.com.au/revit), [www.autodesk.com.au/bim](http://www.autodesk.com.au/bim) and [www.autodesk.com/ecotect](http://www.autodesk.com/ecotect).



Jasmax Auckland office, Parnell, Auckland.

We are committed to using Autodesk products to our best advantage and will expand our use of them as we continue to realise that BIM helps us win projects. Autodesk products help us to grow and improve our designs and documentation.

—Melanie Tristram  
Revit Manager  
Jasmax