

What's New Autodesk® Building Design Suite 2013

Autodesk® Building Design Suite Ultimate 2013

AutoCAD® 2013
AutoCAD® Architecture 2013
AutoCAD® MEP 2013
AutoCAD® Structural Detailing 2013
Autodesk® Sketchbook® Designer 2013
Autodesk® Showcase® 2013
Autodesk® Revit® 2013*
Autodesk® 3ds Max® Design 2013
Autodesk® Navisworks® Manage 2013
Autodesk® Inventor® 2013
Autodesk® Infrastructure Modeler 2013*
Autodesk® Quantity Takeoff 2013
Autodesk® Robot™ Structural Analysis
Professional 2013*

Autodesk® Building Design Suite Premium 2013

AutoCAD® 2013
AutoCAD® Architecture 2013
AutoCAD® MEP 2013
AutoCAD® Structural Detailing 2013
Autodesk® Sketchbook® Designer 2013
Autodesk® Showcase® 2013
Autodesk® Revit® 2013*
Autodesk® 3ds Max® Design 2013
Autodesk® Navisworks® Simulate 2013*

Autodesk® Building Design Suite Standard 2013

AutoCAD® 2013
AutoCAD® Architecture 2013
AutoCAD® MEP 2013
AutoCAD® Structural Detailing 2013
Autodesk® Sketchbook® Designer 2013
Autodesk® Showcase® 2013

* = New Product in Building Design Suite 2013

For more information about Autodesk
Building Design Suite, visit
www.autodesk.com/buildingdesignsuite

Locate the **reseller** nearest you.

Autodesk® Building Design Suite 2013 is a comprehensive building software solution, combining the tools building professionals need for both Building Information Modeling (BIM) and CAD workflows. The Standard edition is tailored for building designers, drafters, and detailers to create more consistent, higher-quality project documentation. The Premium edition provides an optimized set of tools to help architects, MEP engineers, structural engineers and contractors take advantage of the power of BIM to design, visualize, and build better buildings. The Ultimate edition builds on the value of the Premium edition by helping to improve control over project outcomes with tools that provide greater insight across the building lifecycle.

> Build Better Buildings

Autodesk® Building Design Suite Premium 2013 and Ultimate editions now include a new version of **Autodesk® Revit® software** that combines tools for architectural design, MEP engineering, and structural engineering in a single, comprehensive application. Gain access to a broader set of tools to streamline your workflows and collaborate more effectively with other building design disciplines on the Revit platform.

> Advanced Scheduling

The Premium Edition of the Autodesk Building Design Suite 2013 now includes **Autodesk® Navisworks® Simulate** software which provides advanced tools for simulation and powerful features to help you better communicate project information. Comprehensive schedule, cost, animation, and visualization capabilities assist users in demonstrating design intent and simulating construction, helping to improve insight and predictability. Real-time navigation combines with review toolsets to support collaboration among the project team.

> Advanced Structural Analysis

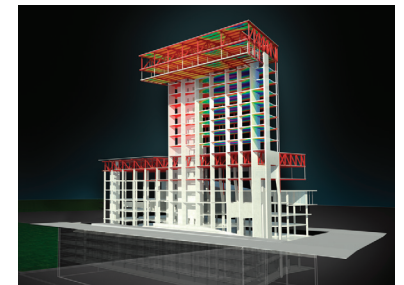
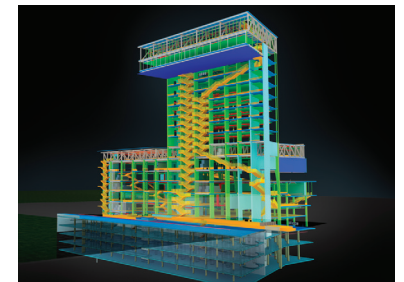
The Ultimate edition of Autodesk Building Design Suite 2013 now includes **Autodesk® Robot™ Structural Analysis Professional 2013** software, which enables structural engineers to efficiently perform advanced analysis on large and complex building structures.

> Site Plan Proposals

The Autodesk Building Design Suite 2013 Ultimate edition now enables users to take advantage of **Autodesk® Infrastructure Modeler 2013** conceptual design software, which can help you to more easily create, evaluate, and communicate convincing site plan proposals for faster stakeholder buy-in and more confident decision making.

> Autodesk 360

Autodesk® 360 is a cloud computing platform that helps customers dramatically improve the way they design, visualize, simulate, and share their work. With Autodesk 360, customers can securely access their work anytime, anywhere, while taking advantage of virtually infinite computing power through a broad range of cloud-based services. Customers using Building Design Suite with subscription access to broader cloud-based capabilities and capacity than they would with individual products alone.



Images courtesy of ACXT-IDOM-ADD+



Autodesk, AutoCAD, Navisworks, Revit, Robot, Showcase, SketchBook, and 3ds Max are registered trademarks of Autodesk, Inc., and/or its subsidiaries and/or affiliates in the USA and/or other countries. All other brand names, product names, or trademarks belong to their respective holders. Autodesk reserves the right to alter product and services offerings, and specifications and pricing at any time without notice, and is not responsible for typographical or graphical errors that may appear in this document. © 2012 Autodesk, Inc. All rights reserved.

Autodesk®