

COMPANY

Pinnacle Infotech

LOCATION

Durgapur, India

SOFTWARE

Autodesk® Revit®**Autodesk® Navisworks®**

Autodesk Revit helps Pinnacle create 61 building models in 4 days

Pinnacle Worked with Dabblefox & Steinberg Implementing BIM on a Southern CA Community College in San Jose, USA

“Autodesk Revit has helped us cut down on the time consumed. By managing project info through Revit, our team was able to complete the modeling within the strict deadline, focusing more on better engineering, construction oversight and client satisfaction.”

—**Mr. Biswaroop Todi**
Vice President
Pinnacle Infotech

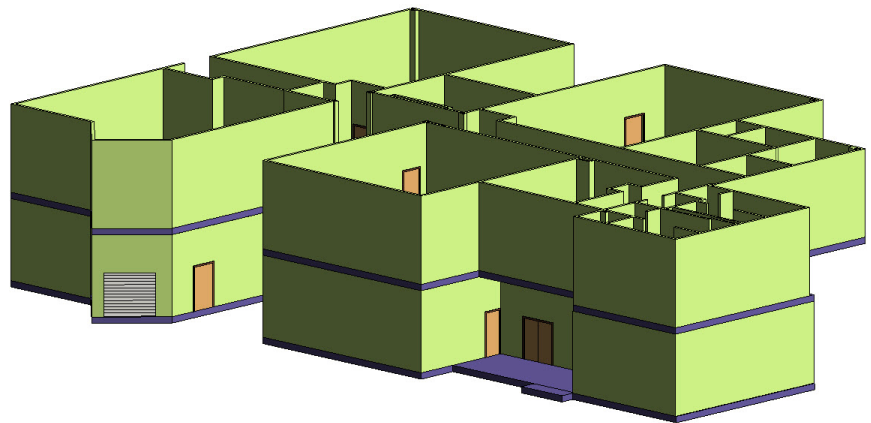


Image courtesy: Pinnacle Infotech

Headquartered in Durgapur, India and with offices in Houston (USA), London (UK), Dubai (UAE) and Calolziocorte (Italy) and Zurich (Switzerland), Pinnacle Infotech is catalyzing renaissance in the construction arena with BIM services. Pinnacle facilitates more than 1035 clients in over 32 countries, across 6 continents, collaborating across time zones with global delivery centers in India, USA, UAE, UK & Italy, comprising of more than 810 in-house BIM specialists, architects & engineers.

Being a leading provider of innovative BIM services to architectural, engineering & construction industries for over 18 years, Pinnacle has successfully executed more than 4500 landmark BIM projects across industries. Some of the significant BIM projects include Kingdom Tower in Jeddah – Saudi Arabia, Dubai International Airport, Muscat Airport, Delhi International Airport (T3), New York University, Julphar Pharmaceutical Plant, Msheireb Downtown Construction (Doha), Dubai Festival City, University of California Health Longmont Hospital, Santa Ana College, Kolter Hotel in Tampa, Florida, Ambuja Patna City Center and Rosslyn Central Place, Arlington County, USA among others.

The Project– Southern CA Community College, San Jose, CA, USA

Pinnacle successfully executed the BIM Model of Southern CA Community College of Steinberg. Generated for as built model creation, the project was divided into 61 building plans of different sizes, spread across 3 campuses.

Project Speciality: Architectural model generated for as-built model creation.

BIM Scope of Work for Pinnacle

Generated 61 floor plan (3D models) from CAD File, Created Exterior & Interior Wall, Floor Slab and Door for each model

- Trades Covered: Architecture
- LOD: 200
- Software Used: Autodesk Revit 2015

BIM Scope of Work for Pinnacle

1. Challenge: It was challenging to create 61 building models within 4 days
2. Solution: Pinnacle engaged a team of engineers by dividing them into 3 groups. Each group had clearly defined targets for building 20 models. Senior team members provided technical guidance and quality check, whenever needed.

Pinnacle combined Revit and Navisworks software platforms to coordinate with subcontractors' models among others. It helped them avoid the cost of rework from the existence of clashes.

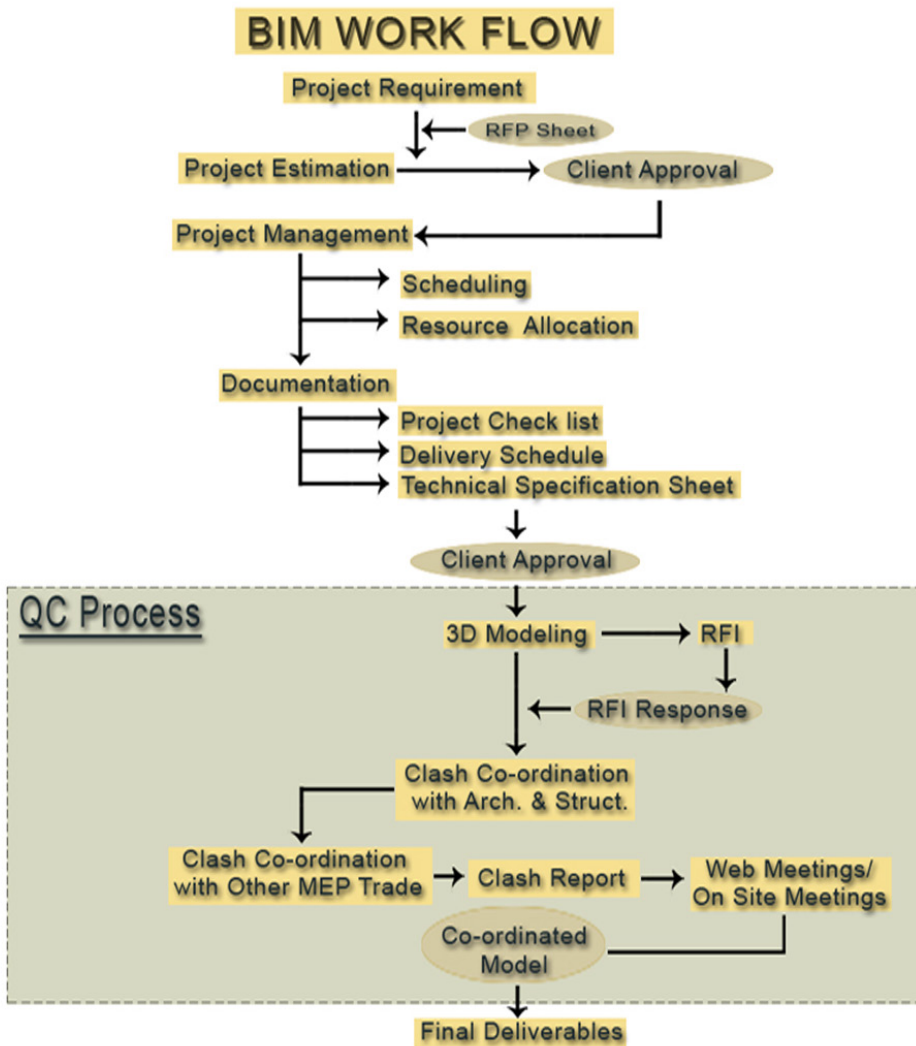


Image courtesy: Pinnacle Infotech

Modeling Stages

Stage 1 Modeling of 61 Units comprising of Duplexes & Apartments in LOD 200

1. Modeling included Windows, Doors, Generic Furnitures, Ceilings, Curtain Walls, Roofing, Stairs, Rails, Elevators, Walls, Exterior Wall (Generic), Interior Wall & Wall Finishes
2. Concrete Structural Models - Slabs Columns & Shear walls

Summary

Autodesk Revit helped Pinnacle Infotech to plan using intelligent models and allowed the team

to anticipate, plan and coordinate every aspect of the project design, detailing, construction and maintenance. It helped to identify constructability issues before the construction by detecting the number of clashes, thus avoiding work stoppages, rework & wastage of time, material and manpower.

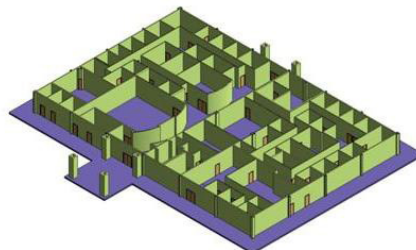


Image courtesy: Pinnacle Infotech

Ms. Somali Ray, Mr. Subhash Das & Mrs. Soumya Bhattacharya - Managers, Pinnacle

Infotech said - "Autodesk Revit BIM software helped us progress through each phase of the project, starting from floor setup to architectural modeling. Pinnacle has reviewed critical areas in 3D for any changes made and evaluated space constraint successfully. BIM facilitated various design disciplines to collaborate in a flawless manner as single information platform, enhancing work efficiency, reducing errors, verifying aesthetic looks and improving building performance."

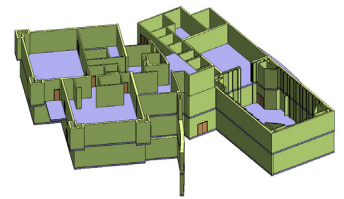


Image courtesy: Pinnacle Infotech

"Using Autodesk BIM software, we could easily create models with the help of cutaways, elevations and sections. We combined Revit and Navisworks software platforms to coordinate with subcontractors' models as well as other disciplines and thus could avoid the cost of rework from the existence of clashes." – added **Mr. Vikash Tripathy, Deputy Manager, & Prabir Kumar Dhara, Assistant Manager, Pinnacle Infotech.**

"Using Autodesk BIM software, we could easily create models with the help of cutaways, elevations and sections. We combined Revit and Navisworks software platforms to coordinate with subcontractors' models as well as other disciplines and thus could avoid the cost of rework from the existence of clashes."

— **Mr. Vikash Tripathy**
Deputy Manager
Pinnacle Infotech

— **Prabir Kumar Dhara**
Assistant Manager
Pinnacle Infotech

Using Revit, Pinnacle completed the modeling within a strict deadline, focusing more on better engineering, construction oversight and client satisfaction.

"Autodesk Revit has helped us cut down on the time consumed. By managing project info through Revit, our team was able to complete the modeling within the strict deadline, focusing more on better engineering, construction oversight and client satisfaction."- concluded **Biswaroop Todi, Vice President, Pinnacle Infotech.**

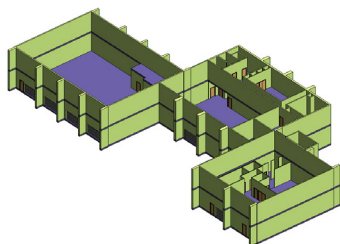


Image courtesy: Pinnacle Infotech

The Happy Client

"The experience was excellent. There were a few misunderstandings along the way, but when brought up they were immediately resolved. The service was fast and the models are exactly what we were hoping for." - **Daniel Clayson | Job Captain – dclayson@steinberg.us.com**

In a nutshell

- **BIM Start Date:** 15th October, 2015
- **BIM End Date:** 20th October, 2015
- **Project Area:** 863,000 Sq ft
- **Team Size:** 9 Engineers
- **Architect:** Steinberg

"The experience was excellent. There were a few misunderstandings along the way, but when brought up they were immediately resolved. The service was fast and the models are exactly what we were hoping for."

—**Daniel Clayson**
Job Captain
dclayson@steinberg.us.com

"Autodesk Revit BIM software helped us progress through each phase of the project, starting from floor setup to architectural modeling. Pinnacle has reviewed critical areas in 3D for any changes made and evaluated space constraint successfully. BIM facilitated various design disciplines to collaborate in a flawless manner as single information platform, enhancing work efficiency, reducing errors, verifying aesthetic looks and improving building performance."

—**Ms. Somali Ray,**
—**Mr. Subhash Das**
—**Mrs. Soumya Bhattacharya**
Managers
Pinnacle Infotech