

Top Reasons to Buy Autodesk Flame Premium

Are you an Autodesk Smoke software artist or owner?

By adopting a converged color and visual effects workflow, we can keep the entire project in our shop, and have complete creative control from ingest to finishing.

— Chris Hengeveld
Smoke Artist
Northern Lights Post

One workstation, one license, three creative choices.

For more information about Autodesk Flame Premium, visit
www.autodesk.com/flamepremium.

To locate the reseller nearest you, visit
www.autodesk.com/reseller.

Autodesk® Flame® Premium 2012 software provides Autodesk's best finishing tools for real-time color grading, editorial finishing, and 3D visual effects—as a single license all on one workstation.

Flame Premium lets you add full-service creative finishing for high-end post, taking advantage of proven Autodesk solutions. Built on the reputation of the Flame brand, Flame Premium helps facilities provide end-to-end creative offerings: from powerful tools for real-time grading, 3D relighting, and timeline-based finishing to smooth data management that can help you finish your complex projects faster. Today's finishing workflows require you to be more than an editor, compositor, or colorist. Your clients expect you to be a true finishing artist, and that means controlling all aspects of a project as you move quickly between conform, advanced 3D visual effects, and real-time color correction. Flame Premium puts the best Autodesk finishing tools in your hands as you tackle your toughest projects.

1 The Tools you Want, the Timeline you Already Know
Flame Premium software offers the full Autodesk® Flame® software Action and Batch creative workflow within the timeline-based finishing workflow of Autodesk® Smoke® Advanced 2012 software. With Flame Premium you can access powerful Flame tools including integrated 3D tracking, Substance, 3D particles, texture projection, and the full 3D keyer. Take control of finishing with the tools you've always wanted in the timeline you already know.

2 Real-Time Color Grading
The real-time color grading tools in Flame Premium bring new options for working with color into the finishing suite. Giving artists a broader range of creative finishing tools can help you retain jobs in your facility and attract new clients with new creative offerings. The key to Flame Premium is flexibility: artists can offer finishing sessions that combine real-time color grading with the visual effects of Flame, or schedule individual color and visual effects sessions based on proven Autodesk tools. Tight integration between finishing and color tasks means artists concentrate on creativity and job completion—not managing or duplicating media.



Image courtesy of The Mill.

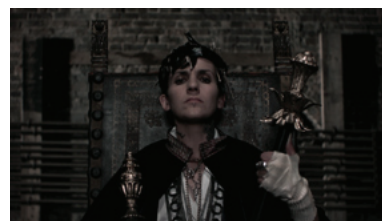


Image courtesy of Motor VFX.



SPIN VFX | Screen Gems | © 2010 Sony Pictures Digital Inc. All Rights Reserved | Bold Films.



Image courtesy of Brickyard VFX.

3 Proven Flame Tools and Flare

Grow your business with the Flame brand, and the ability to add Autodesk® Flare™ 2012 software to your workflow. With multiple Flare stations connected to your Flame Premium suite, you can flexibly configure your facility to handle more projects and build a more efficient 3D finishing pipeline. Access more tools, more workflow options, and more of the professional and creative finishing advantages that the Flame brand brings.

4 Holistic Stereoscopic 3D Finishing

Flame Premium offers comprehensive stereoscopic 3D (S3D) finishing tools for color correction and powerful 3D visual effects. In Flame Premium you can grade S3D timelines in real time while accessing interactive compositing tools that integrate 3D lighting and geometry in a true stereoscopic workspace. Flame Premium gives artists more options and more control when working with stereoscopic 3D content.

5 Familiar Creative Environment

Autodesk finishing and color grading tools share a common approach to design, making it easier to integrate Flame visual effect and color correction skills that help you stay ahead of the competition. When grading in Flame Premium, familiar UI conventions, the ability to use mattes created in compositing, and multi-layer timeline interchange help make it easier for artists to move seamlessly between color and visual effects. 100% compatibility between the Flame desktop and Smoke Advanced timeline visual effects workflow lets artists choose the right Flame Premium workflow for each part of a project.

6 Increase Creative Capacity

As the finishing market evolves, you can be ready for whatever creative finishing challenges your clients present. Flame Premium software is a great opportunity to help increase creative capacity as you standardize on Autodesk's best creative finishing tools.



Image courtesy of WTHR-TV.



Image courtesy of The Mill.



Image courtesy of Motor VFX.