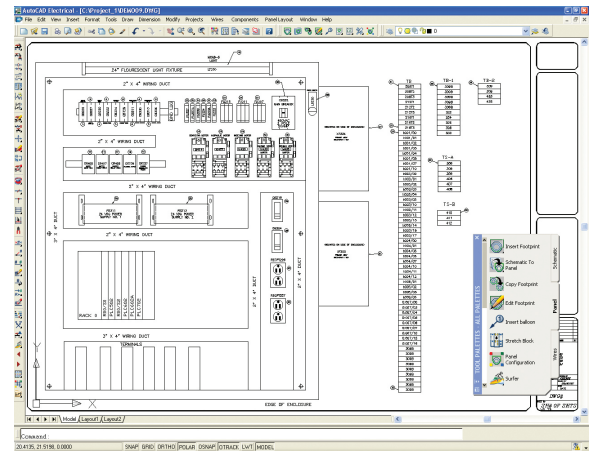


6. Create Smart Panel Layout Drawings

Easily create panel layout drawings and help reduce errors with automatic tracking and updating of all part placements. Once the schematic creation phase is complete, AutoCAD Electrical extracts a list of schematic components for placement into panel layout drawings. Users choose the panel location and a physical "footprint" representation of each device to be inserted into the layout, and a link is automatically created between the device and its representation. Any changes to the schematic or panel representation automatically update the other. Non-schematic items, such as wire duct and mounting hardware, can be added to the layout and automatically combined to create a "smart" panel BOM report.

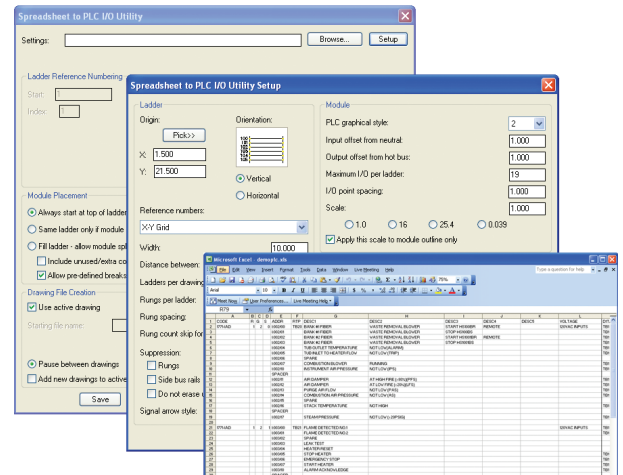


7. Electrical-Specific Drafting Features

Slash design time by using commands purpose-built for electrical controls designers. AutoCAD Electrical includes all the functionality of AutoCAD plus a comprehensive set of functions developed specifically for designing electrical control systems. Specialized features such as trim wire, copy and delete component or circuit, and scoot and align components make it much easier to create drawings quickly. AutoCAD Electrical offers productivity gains of up to 80 percent over AutoCAD.*

8. Automatically Create PLC I/O Drawings from Spreadsheets

Automatically create PLC I/O drawings from the design data stored in a spreadsheet. AutoCAD Electrical gives users the ability to generate a comprehensive set of PLC I/O drawings by simply defining the project's I/O assignments in a spreadsheet. AutoCAD Electrical then automatically creates drawings, complete with ladders per the drawing configuration, I/O modules, addresses and description text, and component and terminal symbols connected to each I/O point. Once the drawings have been created, the I/O address and description report can be exported to the PLC program.



9. Share Drawings with Customers and Suppliers and Track Their Changes

Easily exchange data with customers or suppliers in native DWG format. Edit and view AutoCAD Electrical drawings in any DWG™-compatible program, such as AutoCAD or AutoCAD LT® software. When designs are edited by outside sources, AutoCAD Electrical can create a report of any modifications made to the drawings by others. Also, when you are ready to issue a new revision to your design process, AutoCAD Electrical can create a report of changes made to the drawings since the last revision update.

10. Reuse Existing Drawings

Get a head start on your design projects by reusing drawings from another project. Make a copy of a specific part, or reuse an entire drawing set when starting a new design. Save frequently used circuits for reuse in future designs. AutoCAD Electrical automatically rennumbers the wires and devices to match the configuration of the current drawing or project in which they are placed. You can also reduce design time and errors by retagging all components in a project with a single command.

Now Is the Time

Want to increase your productivity by up to 80 percent? Then now is the time to move to AutoCAD Electrical.

* The AutoCAD Electrical Productivity Study compares the time required to complete 10 tasks in both basic AutoCAD and AutoCAD Electrical. The conclusion: switching to AutoCAD Electrical may help increase your productivity by as much as 80 percent. To learn more, visit www.autodesk.com/autocadelectrical-whitepapers.

For more information about AutoCAD Electrical, visit www.autodesk.com/autocadelectrical.

To locate the reseller nearest you, visit www.autodesk.com/reseller.

Feature	AutoCAD Electrical	AutoCAD
Full AutoCAD Functionality	•	•
Complete AutoCAD Feature Set	•	•
User-Friendly AutoCAD Interface	•	•
DWG™ Compatibility	•	•
Comprehensive Symbol Libraries	•	
Schematic Design Tools	•	
Panel Layout Tools	•	
Terminal Management Tools	•	
Automatic BOM Generation	•	
Autodesk Inventor™ Associativity	•	



AutoCAD Electrical 2008 was the winner of a 2007 Control Design Readers' Choice Award.

Autodesk, AutoCAD, AutoCAD LT, and DWG are registered trademarks or trademarks of Autodesk, Inc., in the USA and other countries. All other brand names, product names, or trademarks belong to their respective holders. Autodesk reserves the right to alter product offerings and specifications at any time without notice, and is not responsible for typographical or graphical errors that may appear in this document. © 2008 Autodesk, Inc. All rights reserved.