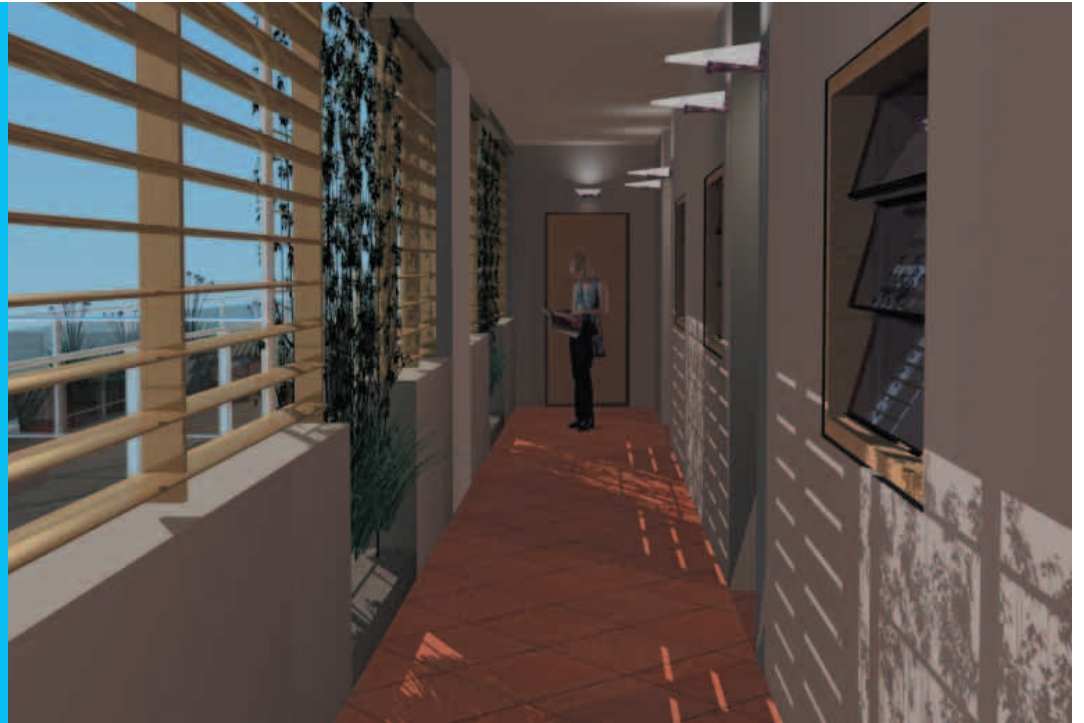


Benn Design

Autodesk Revit®



Our architects find that using Revit gives them more time to work on the actual design aspects of a project than before, as the software manages the tedious but vital background chores such as document management and coordination. This leads to a superior resolution of issues and, ultimately, better and more accurate results

Wesley Benn

Autodesk Revit brings design to life

Revit drives Benn Design to push the boundaries of creativity

Benn Design, founded in 1999 by Wesley Benn, is a Sydney based architectural firm specialising in commercial projects and residential developments. Benn Design currently has 35 projects underway, worth over a billion dollars in construction value. The firm has grown rapidly and is likely to double in size in the near future.

Since 2000, Benn Design has used Autodesk Revit as its building design and documentation system, finding that it not only improves productivity and quality of work, but has also given Wesley Benn the opportunity to expand the firm into a new area - assisting other firms in their transition to the world of Building Information Modeling (BIM) that Autodesk Revit makes possible.

Bringing designs to life more efficiently and effectively through Revit

Since implementing Revit, Benn Design has found that it has been able to increase both the volume and quality of its work. Overall, the project design phase follows an easier and more streamlined process.

For Benn Design, Revit also makes the design review process more efficient. "Revit lets us make changes quickly and cleanly, with all resultant adjustments occurring automatically. As a result, projects advance rapidly and smoothly," said

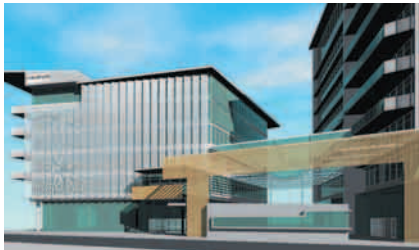
Wesley Benn.

Implementing Revit has also had a positive impact on the way designers work together at Benn Design, with the company reporting improved coordination between individuals. This has resulted in increased confidence that design documents produced by the firm accurately communicate the intended design outcome to the builder.

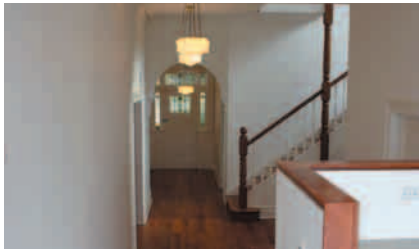
Revit helps architects manage significant design challenges

Recently, Benn Design played a role in the design and modelling of a mosque in the United Arab Emirates – a project that totalled A\$900 million in value. The firm was tasked with modelling, developing documentation and assisting with project troubleshooting. A key component of the project, and one in which Benn Design played a significant role, was to represent the mosque's dome. This task was particularly challenging, requiring advanced simulation capabilities. Using Revit's BIM capabilities, the architect was able to recreate the structural form in a virtual environment, allowing far greater insight into the actual challenges presented by the project, which translated into an accurate set of plans for the builders.

Autodesk®



Being recognised as an Autodesk Revit proficient firm has given Benn Design strong brand differentiation



Furthermore, by undertaking Revit implementation projects and user training, we have added another revenue stream for our firm and increased our return on investment.

“When using Revit, the designer automatically considers the project from a construction perspective, and this makes a complex design project, such as the dome, easier to execute,” said Benn. “How you build in the real world is how you build in Revit.”

Revit improves client and stakeholder relations

Revit’s 3D capabilities are delivering to Benn Design an additional and unanticipated benefit – improved client communications. The firm is finding that presenting designs in 3D format helps clients visualise the architects’ concept much more easily. “When you are trying to explain complex, three-dimensional relationships, for example, the task is made much easier by Revit, with its multiple viewing angles and methods. Client expectations are more easily managed, as they are able to see, from a number of perspectives, what the end result will be. It can be very difficult for the untrained person to translate 2D drawings into something concrete, but Revit changes this by giving the client a real life view. As a result, clients feel more a part of the design process and are generally happier during all phases of a project.”

Revit also increases effective communication between architects and municipal councils when submitting designs for building approval. Issues such as the impact that the building will have on the surrounding environment can be clearly communicated through Revit features such as shadowing effects, animation, and superimposing the 3D design onto a photo of the existing area.

“Revit allows us to display a 3D view of the design for council approval. We can walk the councillors through the design and immediately alter any aspect of it as they see it. We have found that being able to instantly answer questions during the development approval process with the support of a 3D model often results in faster

approvals,” said Wesley Benn.

Benn Design helps other firms push the boundaries with Revit and increases ROI

Benn Design has leveraged its successful internal implementation of Revit by helping other firms apply Revit in their own businesses, with 12 such projects currently in progress. For example, Benn Design is working with retail giant Woolworths’ internal design team to implement Revit. Woolworths builds one store every two and a half weeks as well as conducting renovations on its portfolio of over 700 stores on an ongoing basis. Moving forward, Revit will be central to Woolworths design processes.

Further demonstrating its belief in and commitment to Autodesk Revit, Benn Design is developing Australian content for the software. The firm has created over 600 custom objects for use by the Woolworths design team, as well as generic content that now ships with Revit itself. This customisation work is being carried out with the support of Autodesk.

Benn Design now consists of two divisions, an Architecture & Design division and a Training & Implementation division. Both divisions work hand in hand with some members of each team involved in both. This philosophy of doing hands-on contracts and teaching enables Benn Design trainers to offer more than just theory and to translate Revit technology and concepts into real-life applications. “Our trainers and implementers, through their work as designers and documenters of real-world projects, are better equipped to implement Revit for other firms, and to understand the language and the needs of those firms as they transition to a parametric, three-dimensional future.”

For more information about Autodesk product visit <http://south-apac.autodesk.com>

Autodesk Asia Pte Ltd

391B Orchard Road #12-06
Ngee Ann City Tower B, Singapore 238874
Tel: 65-6461 8100
Fax: 65-6735 5188

Autodesk India Private Limited

A4, “A” Wing, 2nd Floor, Divyasree Chambers
Langford Road, Bangalore 560025, India
Tel: 91-80-229 8855
Fax: 91-80-299 8845

Autodesk Australia Pte Ltd

Level 4, 13-15 Lyonpark Road
North Ryde NSW 2113, Australia
Tel: +61 2 9844 8000
Fax: +61 2 9844 8044