

Architectus

Customer Success Story

Revit® Architecture

Architecture is a competitive environment, and the purpose of any technology is to allow us to make the best use of the skills and experience of our professional staff. Revit Architecture eliminates many tedious tasks, and our staff are very enthusiastic about using it.

—Rodd Perey
Design Technology Director
Architectus Sydney

Shape the future.

Architectus uses Revit Architecture software to optimize design documentation, increase productivity, and exceed expectations.



The Firm

Using Revit® Architecture software, Architectus consistently delivers intelligent architectural solutions, notable for their simplicity and performance. By extending its Autodesk investment with building information modeling (BIM), the company is realizing immediate competitive advantage by optimizing the design and documentation process and capitalizing on intelligent 3D design. The firm exceeds client expectations by delivering more complete documents and higher-quality designs. Staff and project productivity is maximized through better coordination and integration of project documents.

A multiaward-winning practice, Architectus is an international professional services company with more than 200 leading architects, urban designers, and planners, with offices in Auckland, Brisbane, Melbourne, Shanghai, and Sydney. Their experience spans many project typologies, including urban design and planning, public, commercial, residential, education and research, industrial, hospitality, transport, retail, and interior architecture.

The company is behind projects such as the Queensland Gallery of Modern Art, Brisbane; 1 Bligh St. Sydney; Australian Synchrotron, Melbourne; Maanshan City Centre, China; and the Waitakere Civic Centre in New Zealand. Architectus directors have been honored with more than 85 awards, including the 2007 Royal Australian Institute of Architects' Queensland Award for Public Architecture with the Queensland Gallery of Modern Art, and the 2007 Property Council of Australia's award for innovation and excellence in public buildings with the new Australian Synchrotron building.

With a strong reputation for project delivery, Architectus sought to streamline the design and documentation process in a bid to further enhance its services. The company adopted Revit® Architecture software as the key platform underpinning its building information modeling approach to project delivery. Today, Architectus relies on Revit Architecture software to communicate design proposals more quickly and clearly, offer better design insight through on-demand visualization and analysis, and provide a process that mirrors the real world of building.

Autodesk®

The Solution

Greater Productivity

Since adopting Revit Architecture software, Architectus has transformed the way it creates, amends, and delivers designs. The company now has the ability to design throughout different phases, and quickly and easily make changes to major compositional elements. It can create comprehensive design proposals and realize its clients' ideas on the fly with 3D views. It can also make late-stage changes without having to manually coordinate model views, drawing sheets, schedules, sections, plans, and other design information. More important, Revit Architecture helps Architectus to provide designs and documentation that are coordinated, consistent, and complete.

Architectus has dramatically reduced the time spent on iterating designs, particularly where detail is consistently added to various elements and phases of the design process. According to Rodd Perey, design technology director of the Sydney Architectus office, "Originally we saw Revit Architecture as a design and presentation tool, but in my view the strength of the product is in

its ability to manage and coordinate all the elements needed for successful building design and construction documentation. We use Revit Architecture to produce our door, window, and finishes schedules, and many other types of analysis. The documents remain fully coordinated, allowing outstanding design issues to become immediately obvious."

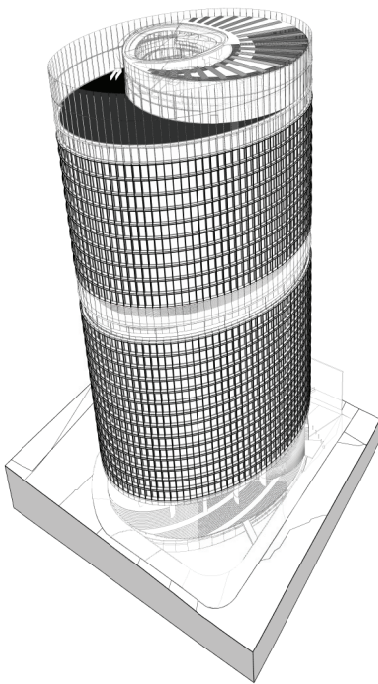
Enhanced Coordination, Quality, and Communication

Using BIM technology the company can keep computable information about a building project in design and construction up-to-date and accessible in an integrated digital environment. This gives architects, engineers, builders, and owners a clear overall vision of their projects and enables faster decision making—helping raise the quality of projects.

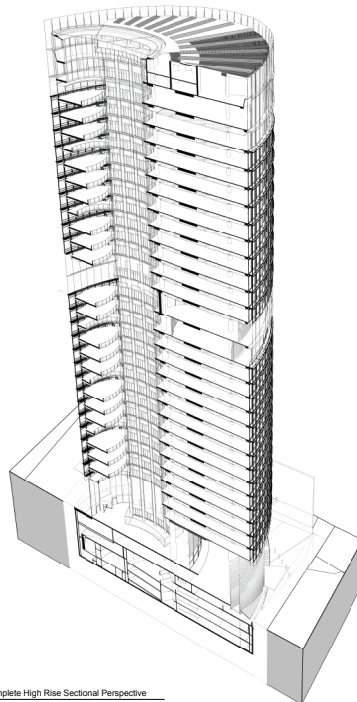
From conceptual studies through to the most detailed construction drawings and schedules, Revit Architecture software helps Architectus coordinate its projects effortlessly. With the Revit Architecture

We use Revit Architecture to produce our door, window, and finishes schedules, and many other types of analysis. The documents remain fully coordinated, allowing outstanding design issues to become immediately obvious.

—Rodd Perey
Design Technology Director
Architectus Sydney

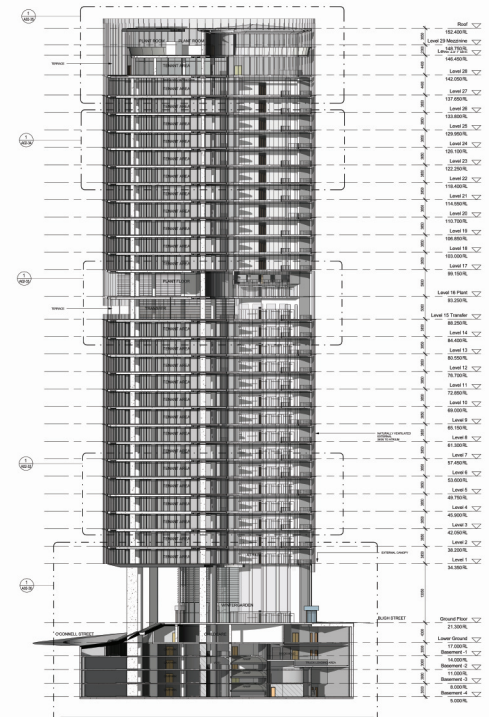


1 Complete High Rise Perspective



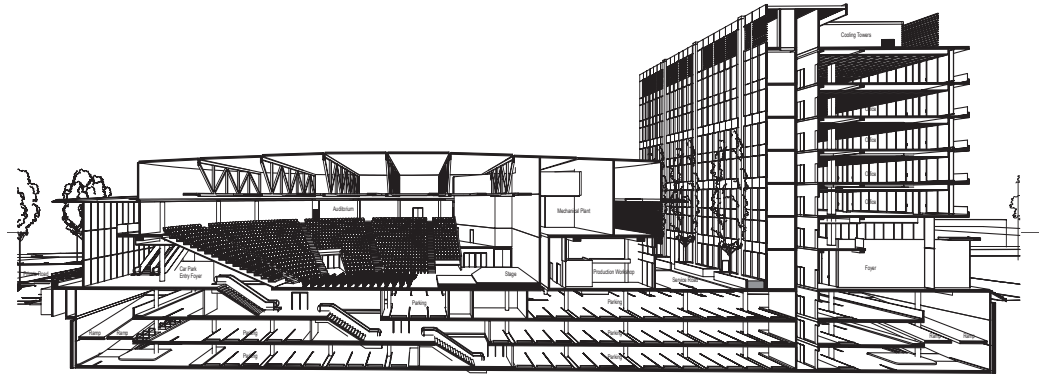
2 Complete High Rise Sectional Perspective

REFERENCES - Supplementary Information	
1	Architectus Sydney
2	Architectus Sydney
3	Architectus Sydney
4	Architectus Sydney
5	Architectus Sydney
6	Architectus Sydney
7	Architectus Sydney
8	Architectus Sydney
9	Architectus Sydney
10	Architectus Sydney
11	Architectus Sydney
12	Architectus Sydney
13	Architectus Sydney
14	Architectus Sydney
15	Architectus Sydney
16	Architectus Sydney
17	Architectus Sydney
18	Architectus Sydney
19	Architectus Sydney
20	Architectus Sydney
21	Architectus Sydney
22	Architectus Sydney
23	Architectus Sydney
24	Architectus Sydney
25	Architectus Sydney
26	Architectus Sydney
27	Architectus Sydney
28	Architectus Sydney
29	Architectus Sydney
30	Architectus Sydney
31	Architectus Sydney
32	Architectus Sydney
33	Architectus Sydney
34	Architectus Sydney
35	Architectus Sydney
36	Architectus Sydney
37	Architectus Sydney
38	Architectus Sydney
39	Architectus Sydney
40	Architectus Sydney
41	Architectus Sydney
42	Architectus Sydney
43	Architectus Sydney
44	Architectus Sydney
45	Architectus Sydney
46	Architectus Sydney
47	Architectus Sydney
48	Architectus Sydney
49	Architectus Sydney
50	Architectus Sydney
51	Architectus Sydney
52	Architectus Sydney
53	Architectus Sydney
54	Architectus Sydney
55	Architectus Sydney
56	Architectus Sydney
57	Architectus Sydney
58	Architectus Sydney
59	Architectus Sydney
60	Architectus Sydney
61	Architectus Sydney
62	Architectus Sydney
63	Architectus Sydney
64	Architectus Sydney
65	Architectus Sydney
66	Architectus Sydney
67	Architectus Sydney
68	Architectus Sydney
69	Architectus Sydney
70	Architectus Sydney
71	Architectus Sydney
72	Architectus Sydney
73	Architectus Sydney
74	Architectus Sydney
75	Architectus Sydney
76	Architectus Sydney
77	Architectus Sydney
78	Architectus Sydney
79	Architectus Sydney
80	Architectus Sydney
81	Architectus Sydney
82	Architectus Sydney
83	Architectus Sydney
84	Architectus Sydney
85	Architectus Sydney
86	Architectus Sydney
87	Architectus Sydney
88	Architectus Sydney
89	Architectus Sydney
90	Architectus Sydney
91	Architectus Sydney
92	Architectus Sydney
93	Architectus Sydney
94	Architectus Sydney
95	Architectus Sydney
96	Architectus Sydney
97	Architectus Sydney
98	Architectus Sydney
99	Architectus Sydney
100	Architectus Sydney



parametric change engine, the company can make amendments to any part of the design and have the changes automatically integrated and coordinated throughout the project. It also enables the company to enhance client communications and accelerate decision making, by gaining timely feedback on project design, scope, schedule, and budget, while minimizing costly efforts to coordinate documents manually.

Using model-based design, by having the ability to design in a 3D format, the company can better share ideas and inspirations with clients at an early stage to fast-track support. Through the Project Navigator feature in Revit Architecture, designers can access any view of the building information model including drawing sheets, schedules, sections and plans.



Collaboration and Integration Drive Success

As Architectus grows, seamless integration of designs and documentation is the key to driving project success, as is effective collaboration across teams and geographies. This requires streamlined processes and effective workflows to ensure designs are created and delivered efficiently.

With the flexible licensing arrangements for Revit Architecture software, Architectus has extended the benefits of the solution to the project team's desktops. This helps create a cohesive work environment that fosters collaboration and knowledge sharing, both internally and externally with partners. From initial concept to project completion, designers and project architects can now view the status of a project and integrate information in real time. This has delivered considerable time savings by reducing the time taken to develop plans.

Revit Architecture software interoperability with other Autodesk products further streamlines workflows. Its ability to share files with AutoCAD® has helped Architectus realize further value. Perey explains, "At the early stages of a project we often use AutoCAD blocks to stand in for modeled Revit Architecture elements, and replace them as the design progresses. We are also able to deliver high-quality AutoCAD drawings for use as backgrounds by our consultants, using our established automated drawing issue procedures. We can also host consultants' drawings within the Revit Architecture project file for easy reference."



Realizing a Return on Its Autodesk Investment

Architectus has made a strategic investment in Autodesk, not just in terms of software, but also in relation to staff training, quality assurance systems and procedures, as well as extensive in-house customizations. The adoption of Revit Architecture is further maximizing the value of the company's investment, as the solution builds on its existing systems with BIM capabilities being developed alongside existing applications.

Perey explains, "Architecture is a competitive environment, and the purpose of any technology is to allow us to make the best use of the skills and experience of our professional staff. Revit Architecture eliminates many tedious tasks, and our staff are very enthusiastic about using it."

Perey goes on to add, "With each project we take Revit Architecture technology one step further. We are now using Revit Architecture as the basis for analyzing a building's environmentally sustainable design (ESD) performance, code compliance, construction sequencing, and logistics. We are sharing models with multi-disciplinary teams for structural analysis and MEP integration, and using the built-in coordination and interference checking tool to reduce errors."

The Result

Revit Architecture software is delivering significant benefits to Architectus, providing the company with a key point of differentiation and further boosting its position as a leader in the architecture and design field. Architectus now relies on Revit Architecture to keep its designs and documentation coordinated, consistent, and complete; communicate design proposals more quickly and clearly; and offer better design insight through on-demand visualization and analysis. Overall, the company is delivering on its commitment to project success and excellent service through enhanced communication and collaboration, integrated processes, and streamlined systems.

Learn More

To learn more about Revit Architecture software and how you can drive competitive advantage, visit www.autodesk.com/revitarchitecture.



We are a progressive organization that understands the need to use the best technology. That technology is Revit Architecture. It improves our processes and allows us to concentrate on the architecture.

—Ray Brown
Director
Architectus Sydney