

Top 10 Reasons why Automotive Suppliers choose Autodesk

The Autodesk approach to Digital Prototyping is unique in that it is scalable, attainable and cost effective allowing a broader group of manufacturers to realize the benefits of digital prototyping with minimal disruption to existing workflows.

Autodesk® offers the most straightforward path for auto suppliers to create, share, and maintain a single digital model – enabling greater collaboration and innovation by bringing together design data from all phases of the product development process.



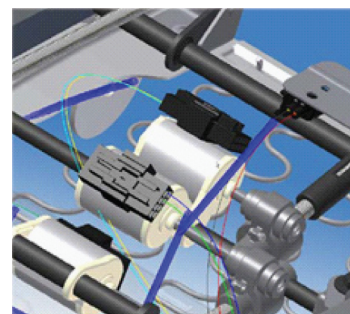
1. Conceptual Design Creativity

Autodesk® offers a unique conceptual design approach that extends from sketch to completed surface. Autodesk® SketchBook® Pro provides a way for designers to start with a 2D digital sketching tool that emulates physical brushes and pencils. Sketches can be reused and transformed into 3D concept models and Class A surfaces with the Autodesk® AliasStudio™ product family, the solution of choice for Automotive industrial designers. Autodesk® Showcase™ and Autodesk® Opticore™ Realizer software provide a scalable implementation from desktop to high end visualization systems including state of the art real time ray tracing for interactive visual realism.



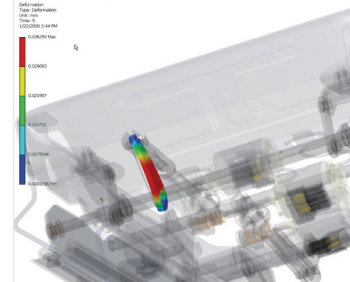
2. Intelligent Mechatronic Systems Design

Autodesk provides a cost effective and scalable solution for mechatronic development. Autodesk® Productstream® software enables various design elements within a mechatronic assembly – mechanical, electrical, and software – to be managed together with change control and release. In addition, Autodesk® Inventor® is able to incorporate circuit board designs from a variety of ECAD applications for the packaging of complex electromechanical products. In addition, Autodesk Inventor Professional software is able to incorporate control system designs from AutoCAD Electrical® software so that complex wiring harnesses can be bundled and routed in the context of an overall mechanical assembly.



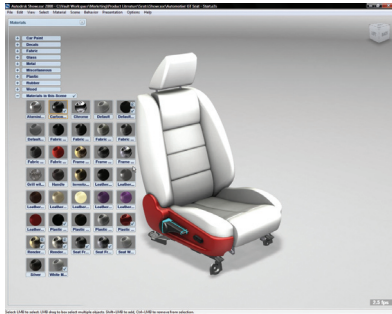
3. Integrated Simulation and Analysis

Autodesk Inventor software provides powerful tools for dynamic simulation of assemblies and stress analysis of mechanical elements within those assemblies. These capabilities are designed for ease of use so that an engineer can easily use simulation results from the digital prototype and modify conditions or make design changes to quickly evaluate the effect on systems and components.



4. Synchronized Collaboration

Autodesk offers design review, visualization and data management collaboration tools. Autodesk® Design Review software is the most widely used design review and markup software in the world with over 20 million downloads to date. Autodesk Showcase and Autodesk Opticore Realizer enable photorealistic visualization of design models with the power of global design review of dynamic models. Autodesk Productstream enables better collaboration between designers, design workgroups, and manufacturers by managing design changes and engineering workflow. Autodesk® Streamline® and Design Review securely share and globally manage access to valuable design data, providing partners with change management tools and access to design data.

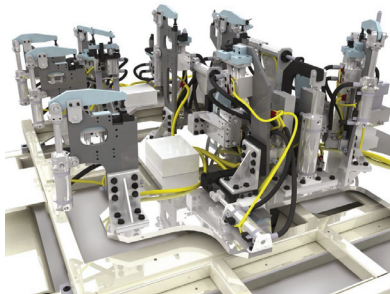


5. Associative 3D and 2D Design

Autodesk provides a unique level of integration between Autodesk Inventor for 3D modeling and AutoCAD® Mechanical for 2D design. In Autodesk Inventor Suite and Autodesk Inventor Professional software, AutoCAD Mechanical is bundled so that designers and engineers with varying skill sets can select the most productive solution to meet specific design needs. Because of the associative 2D and 3D workflow between these two applications, 2D data can be productively used in a 3D environment, and changes to a 3D model can be reflected back in the 2D design.

6. Streamlined Manufacturing Implementation

Autodesk helps take product design to the plant floor with a highly productive, easy to use approach to the design of machines, tooling, jigs, and fixtures. Autodesk Inventor and AutoCAD Mechanical in Autodesk Inventor Suite and Autodesk Inventor Professional software, are widely used by machinery manufacturers and tool and die shops. By adopting Autodesk solutions within manufacturing engineering, suppliers are able to take advantage of these solutions and readily collaborate. In addition, the ability to import data from a variety of native CAD applications and geometry kernels provides an effective means of reusing 3D product data for manufacturing implementation.

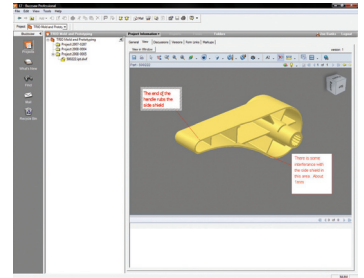


7. Open Interoperability

The Autodesk solution for Digital Prototyping is uniquely positioned given its ease of deployment and management, ease of training and integration, and relative low cost. Autodesk offers the most straightforward path for manufacturers to create and maintain a single digital model. Our tools are easy to integrate into existing business processes providing minimal disruption to existing workflows. Our cost effectiveness makes powerful desktop technology available to companies of all sizes.

8. Seamless Data Management

Autodesk supports the productivity of workgroups through the use of effective data management with Autodesk Productstream software. This application enables workgroups to manage documents, changes, and release of information. In addition, bills of material and other rich information can be extended from the workgroup into wider Enterprise Resource Planning (ERP) applications.



9. Facility Design

Autodesk is a leader in architectural solutions, and this leadership capability extends to the plant floor, where Autodesk offers products well suited to laying out production facilities. Products such as Revit® Architecture and Revit® MEP software support the design of facilities themselves, while AutoCAD® Architecture and AutoCAD Mechanical software are ideal for laying-out and arranging manufacturing cells. Autodesk® NavisWorks® software enables the integration of building, product, equipment, and other data to create a complete digital model of the factory.

10. Powerful Animation, Effects & Rendering

Autodesk facilitates the creation of high quality images and animations for marketing materials with stunningly realistic visualizations directly from the digital prototype. Autodesk® 3DS® Max Design and Autodesk® Maya® software contain a complete suite of CAD data preparation, modeling, effects and rendering tools to create the highest quality photorealistic and stylistic still and animated visualizations. Data interoperability between AliasStudio, Showcase, and Inventor gives designers and CG artists flexibility for the design, animation and rendering of digital prototypes within a single unified pipeline.



To learn more, visit www.autodesk.com/automotive-supplier.
To locate the reseller nearest you, visit www.autodesk.com/reseller.