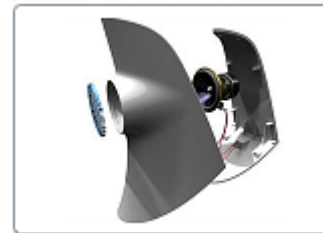
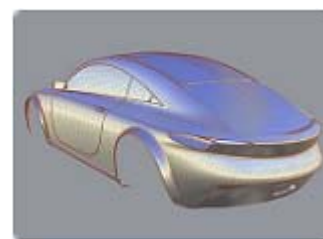
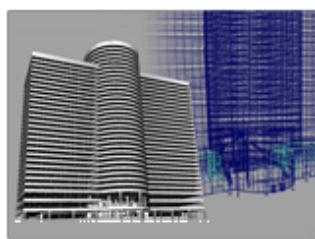


Autodesk DirectConnect 2009 R2



What's new this release



This section outlines enhancements for the DirectConnect 2009 R2 version (released 2008), in addition to various bug fixes.

What's new

The following improvements and enhancements have been made to Autodesk DirectConnect:

- CATIA V4 import for AliasStudio 2009 SP1, Showcase 2009 R1, and Opticore Studio 2009 R1.
- Autodesk Inventor and Pro/Engineer import for Maya 2009 R1.
- Group policy installation alignment.
- UGNX import for Opticore Studio 2009 R1.

NOTE For licensing information, please see Supported products and translators.

Improvements

CATIA V4

- CATIA V4 data can now be imported into AliasStudio and converted to an Alias wire file.

CATIA V5

- CATIA V5 Volume data can be imported into AliasStudio, even with Import by Layers on.
- CATIA V5 data can now be imported into AliasStudio and converted to Alias wire files without causing tessellation problems.
- The processing time for importing large CATIA V5 files in Showcase has been greatly reduced.

UG and UGNX

- UG assembly files containing trimmed curves with a hyperbola as its basis curve can be imported.
- Surfaces from imported data from UG are now interpreted correctly.
- UG files with trim surfaces import correctly.
- Trimming issues with UGNX have been fixed.
- Parasolid trimmed filleted and planar data in UGNX are now trimmed correctly.
- Parasolid data for UGNX is now interpreted correctly.
- UGNX3 and UGNX4 files are imported properly into AliasStudio 2009.
- The installation process has changed to make it faster and easier to get up and running.
- Translation of CATIA V5 entities, such as fillet, chamfer, offsets, swept surface, and other procedurally-defined surfaces, has been improved.

- For DWG files, you can now export different versions of the file , such as 2007, 2004, 2000, or R14. For DXF, you can export 2007, 2004, 2000, or R12 versions of the file. The default exported version will be 2007.
- Imported CATIA V5 surface quality has greatly improved.
- If working on Vista and wanting to use the DirectConnect Inventor translator, you must run the Inventor View as “Administrator”, before the data can be translated.

NOTE Running the Inventor View as “Administrator” is different from running it from an Administrator Account.
