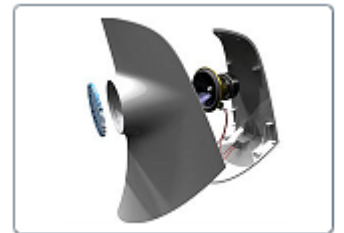
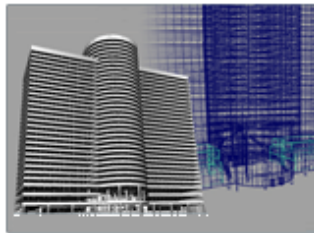


Autodesk DirectConnect 2010



What's new this release



This section outlines enhancements made and new features added to the 2010 version (released 2009) of DirectConnect, along with various bug fixes.

What's new

- UGNX 6 .prt files can be imported.
- UGNX import for Opticore Studio 2010.
- CATIA V5 R19 .CAT Part and .CATProduct files can be imported.
- CATIA V4 import from Alias 2010 and Opticore Studio 2010.
- DWG 2010 and DXF 2010 files are exported by default. There is still an option to export to the following older versions:
 - For DWG: 2007, 2004, 2000, or R14

- For DXF: 2007, 2004, 2000, or R12
- Geometry, as well as material and model scaling information from an AutoCAD file (DWG or DXF) import into Showcase.
- Color 3D printer output (.zpr) for the digital prototyping solution.
- DWF export.
- Group policy installation alignment.

NOTE For licensing information, please see Supported products and translators.

Improvements

AutoCAD to Showcase

- Much more information, such as colors, and materials, is transferred from AutoCAD DWG and DXF files to Showcase.

CATIA V4

- CATIA V4 data can be imported into Alias and converted to an Alias wire file.

CATIA V5

- The processing time for importing large CATIA V5 files in Showcase has been greatly reduced.

UG and UGNX

- Parasolid trimmed filleted and planar data in UGNX are now trimmed correctly.
- The installation process has changed to make it faster and easier to get up and running.
- Imported CATIA V5 surface quality has greatly improved.
- If working on Vista and wanting to use the DirectConnect Inventor translator, you must run the Inventor View as “Administrator”, before the data can be translated.

NOTE Running the Inventor View as “Administrator” is different from running it from an Administrator Account.

DWG

You will see improved performance in the following areas:

- transfer of material properties
- transfer of model units
- transfer of scaling
- translation performance
- stability

Inventor and Showcase

With the improved Inventor translator, you can see more content, such as:

- materials
- file textures
- visibility
- part attributes, such as Suspend and Visibility

Limitations

AutoCAD to Showcase

- The AutoCAD material attribute **Illumination** is not supported by Showcase.
- Only 3D hierarchical data is supported. Curves and 2D drawings are not supported.

AutoCAD to Alias

The AutoCAD material attribute **Illumination** is supported by Alias, but is called **Incandecense**.

Maya on the Mac OS X operating system

Maya 2010 on the Mac OS X operating system does not use DirectConnect 2010; however, it does use DirectConnect 2009. Please check the Autodesk web site for the documentation.

Copyright and trademarks

2

© 2009 Autodesk, Inc. All Rights Reserved. Except as otherwise permitted by Autodesk, Inc., this publication, or parts thereof, may not be reproduced in any form, by any method, for any purpose.

Certain materials included in this publication are reprinted with the permission of the copyright holder.

Trademarks

The following are registered trademarks or trademarks of Autodesk, Inc., in the USA and other countries: 3DEC (design/logo), 3December, 3December.com, 3ds Max, ADI, Alias, Alias (swirl design/logo), AliasStudio, Alias|Wavefront (design/logo), ATC, AUGI, AutoCAD, AutoCAD Learning Assistance, AutoCAD LT, AutoCAD Simulator, AutoCAD SQL Extension, AutoCAD SQL Interface, Autodesk, Autodesk Envision, Autodesk Insight, Autodesk Intent, Autodesk Inventor, Autodesk Map, Autodesk MapGuide, Autodesk Streamline, AutoLISP, AutoSnap, AutoSketch, AutoTrack, Backdraft, Built with ObjectARX (logo), Burn, Buzzsaw, CAiCE, Can You Imagine, Character Studio, Cinestream, Civil 3D, Cleaner, Cleaner Central, ClearScale, Colour Warper, Combustion, Communication Specification, Constructware, Content Explorer, Create>what's>Next> (design/logo), Dancing Baby (image), DesignCenter, Design Doctor, Designer's Toolkit, DesignKids, DesignProf, DesignServer, DesignStudio, DesignStudio (design/logo), Design Web Format, Discreet, DWF, DWG, DWG (logo), DWG Extreme, DWG TrueConvert, DWG TrueView, DXF, Ecotect, Exposure, Extending the Design Team, Face Robot, FBX, Filmbox, Fire, Flame, Flint, FMDesktop, Freewheel, Frost, GDX Driver, Gmax, Green Building Studio, Heads-up Design, Heidi, HumanIK, IDEA Server, i-drop, ImageModeler, iMOUT, Incinerator, Inferno, Inventor, Inventor LT, Kaydara, Kaydara (design/logo), Kynapse, Kynogon, LandXplorer, LocationLogic, Lustre, Matchmover, Maya, Mechanical Desktop, Moonbox, MotionBuilder, Movimento, Mudbox, NavisWorks, ObjectARX, ObjectDBX, Open Reality, Opticore, Opticore Opus, PolarSnap, PortfolioWall, Powered with Autodesk Technology, Productstream, ProjectPoint, ProMaterials, RasterDWG, Reactor, RealDWG, Real-time Roto, REALVIZ, Recognize, Render Queue, Retimer,Reveal, Revit, Showcase, ShowMotion, SketchBook, Smoke, Softimage, Softimage|XSI (design/logo), SteeringWheels, Stitcher, Stone, StudioTools, Topobase, Toxik, TrustedDWG, ViewCube, Visual, Visual Construction, Visual Drainage,

Visual Landscape, Visual Survey, Visual Toolbox, Visual LISP, Voice Reality, Volo, Vtour, Wire, Wiretap, WiretapCentral, XSI, and XSI (design/logo).

The following are registered trademarks or trademarks of Autodesk Canada Co. in the USA and/or Canada and other countries: Backburner, Multi-Master Editing, River, and Sparks.

The following are registered trademarks or trademarks of MoldflowCorp. in the USA and/or other countries: Moldflow, MPA, MPA (design/logo), Moldflow Plastics Advisers, MPI, MPI (design/logo), Moldflow Plastics Insight, MPX, MPX (design/logo), Moldflow Plastics Xpert.

All other brand names, product names or trademarks belong to their respective holders.

Disclaimer

THIS PUBLICATION AND THE INFORMATION CONTAINED HEREIN IS MADE AVAILABLE BY AUTODESK, INC. "AS IS." AUTODESK, INC. DISCLAIMS ALL WARRANTIES, EITHER EXPRESS OR IMPLIED, INCLUDING BUT NOT LIMITED TO ANY IMPLIED WARRANTIES OF MERCHANTABILITY OR FITNESS FOR A PARTICULAR PURPOSE REGARDING THESE MATERIALS.

Published by:

Autodesk, Inc.

111 McInnis Parkway

San Rafael, CA 94903, USA

Please send us your comment about this page.