

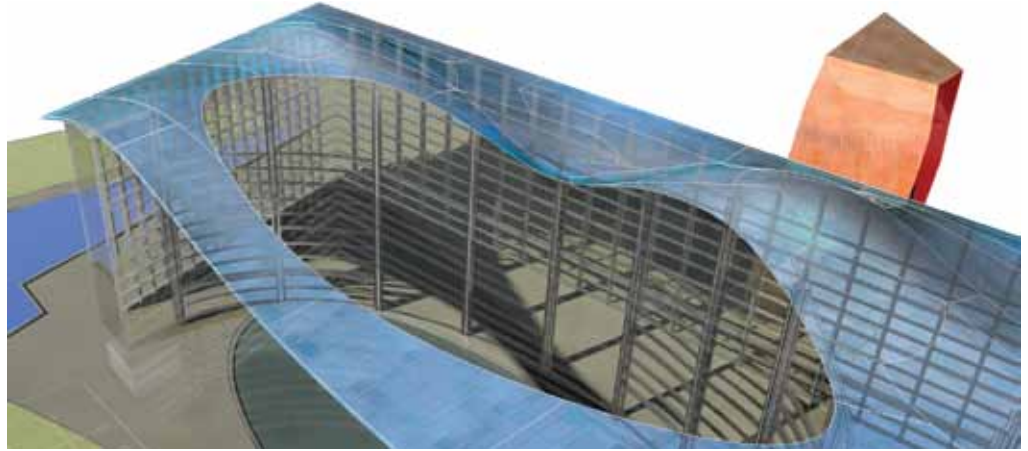
# AutoCAD® 2011

## Autodesk Certification

### Exam Preparation Roadmap

Autodesk certifications are industry-recognized credentials that can help you succeed in your design career—providing benefits to both you and your employer.

The certifications provide reliable validation of skills and knowledge, and they can lead to accelerated professional development, improved productivity, and enhanced credibility.



Autodesk highly recommends that you structure your examination preparation for success. This means scheduling regular time to prepare, reviewing this exam preparation roadmap, using the Autodesk Official Training Guide, taking an Assessment test, and using a variety of resources. Equally as important, actual hands-on experience is recommended.

The AutoCAD 2011 Certified Associate exam consists of 30 questions that assess your knowledge of the tools, features, and common tasks of AutoCAD 2011. Question types include multiple choice, matching, and point-and-click (hotspot). The exam has a 1-hour time limit. (In some countries, the time limit may be extended.)

The AutoCAD 2011 Certified Professional exam is a performance-based test. The exam is comprised of 20 questions. Each question requires you to use AutoCAD 2011 to create or modify a data file, and then type your answer into an input box. The answer you enter will either be a text entry or a numeric value. The exam has a 90-minute time limit (In some countries, the time limit may be extended.)

To earn the credential of AutoCAD 2011 Certified Professional, you must also pass the AutoCAD 2011 Certified Associate exam. You can pass the exams in any order.

To recertify from AutoCAD 2010 Professional to AutoCAD 2011 Professional, you need only pass the AutoCAD 2011 Certified Associate exam.

#### Assessment Tests

Autodesk assessment tests will help identify areas of knowledge that you should develop in order to prepare for the certification exam. At the completion, you will be able to review the items you missed and their correct answers. Contact an Autodesk Certification Center for more information at <http://autodesk.starttest.com>.

#### Autodesk Official Training Guides

The Autodesk Official Training Guide for the AutoCAD 2011 Certification exams is *Mastering AutoCAD 2011 and AutoCAD LT 2011* from Wiley Publishing. This guide is available from booksellers and online booksellers worldwide.

#### ATC® Instructor-Led Courses

The Autodesk Authorized Training Center (ATC®) program is a global network of professional training providers offering a broad range of learning resources. Visit the online ATC locator at <http://www.autodesk.com/atc>.

#### Recommended Experience Levels for AutoCAD Certification Exams

Actual hands-on experience is a critical component in preparing for the exam. You must spend time using the product and applying the skills you have learned.

- **2011 Certified Associate exam:** Mastering AutoCAD 2011 course (or equivalent) plus 100 hours of hands-on application
- **2011 Certified Professional exam:** Mastering AutoCAD 2011 course (or equivalent) plus 400 hours of hands-on application

# AutoCAD 2011

## Exam topics and objectives

We recommend that you review the topics and objectives during your preparation for certification. The Autodesk Official Training Guide for the AutoCAD 2011 Certification exams is *Mastering AutoCAD 2011 and AutoCAD LT 2011* from Wiley Publishing. That guide—which covers the topics and objectives listed below—is available from booksellers and online booksellers worldwide.

### AutoCAD 2011 Certified Associate

Topic	Objective
Creating Basic Drawings	<ul style="list-style-type: none"><li>• Use Object snaps</li><li>• Use Polar and Object snap tracking</li></ul>
Manipulating Objects	<ul style="list-style-type: none"><li>• Use appropriate selection set methods</li><li>• Apply mirror techniques to mirror copies of objects</li><li>• Use Rectangular arrays</li><li>• Use polar arrays</li><li>• Use rotation reference angles to rotate an object</li></ul>
Drawing Organization and Inquiry Commands	<ul style="list-style-type: none"><li>• Analyze a closed object to find the area</li><li>• Apply changes to an object's property</li><li>• Apply layer transparency to select layers</li></ul>
Altering Objects	<ul style="list-style-type: none"><li>• Identify methods for creating a radius between two objects</li><li>• Join two objects to create one object</li><li>• Apply modify techniques to change an object's shape by stretching</li></ul>
Working with Layouts	<ul style="list-style-type: none"><li>• Demonstrate how to create or manipulate viewports</li></ul>
Annotating the Drawing	<ul style="list-style-type: none"><li>• Demonstrate the methods for editing multi-line text</li><li>• Identify text justification locations</li><li>• Describe a paragraph of text with multiple columns</li></ul>
Dimensioning	<ul style="list-style-type: none"><li>• Describe dimension styles</li><li>• Apply methods for editing dimensions</li><li>• Apply linear dimensions to a drawing</li></ul>
Hatching Objects	<ul style="list-style-type: none"><li>• Describe hatch editing</li></ul>
Working with Reusable Content	<ul style="list-style-type: none"><li>• Apply the uses for Tool Palettes</li><li>• Create, insert, and edit blocks in a drawing</li></ul>
Creating Additional Drawing Objects	<ul style="list-style-type: none"><li>• Identify table cell data contents</li><li>• Describe how to create a polyline</li></ul>
Parametric Design	<ul style="list-style-type: none"><li>• Apply geometrical or dimensional constraints</li></ul>
Working with Annotative Objects	<ul style="list-style-type: none"><li>• Use annotative text and dimensions in a drawing at various viewport or annotation scales</li></ul>
Isolate or Hide Displayed Objects	<ul style="list-style-type: none"><li>• Use hide or isolate techniques with objects</li></ul>
Grip Editing	<ul style="list-style-type: none"><li>• Explain how to modify a drawing using grips</li></ul>
Viewing Drawings in 3D	<ul style="list-style-type: none"><li>• Use the ViewCube to view drawings in 3D</li></ul>

### AutoCAD 2011 Certified Professional

Topic	Objective
Manipulating Objects	<ul style="list-style-type: none"><li>• Apply mirror techniques to mirror copies of objects</li><li>• Apply rotation techniques to rotate objects</li><li>• Create rectangular and polar arrays</li><li>• Create copies of objects</li><li>• Apply move techniques to move objects to new positions</li></ul>
Drawing Organization and Inquiry Commands	<ul style="list-style-type: none"><li>• Analyze a closed object to find the area</li><li>• Apply changes to an object's property</li></ul>
Altering Objects	<ul style="list-style-type: none"><li>• Create parallel geometry by offsetting an object</li><li>• Apply modify techniques to change an object's shape by stretching</li></ul>
Working with Layouts	<ul style="list-style-type: none"><li>• Create a new layout and viewports with page setups</li></ul>
Dimensioning	<ul style="list-style-type: none"><li>• Edit multileaders using proper alignment or collection techniques</li><li>• Edit linear and aligned dimensions in a drawing</li><li>• Edit dimension text and text placement in a drawing</li></ul>
Hatching Objects	<ul style="list-style-type: none"><li>• Create and edit hatch objects</li></ul>
Working with Reusable Content	<ul style="list-style-type: none"><li>• Create, insert, and edit blocks in a drawing</li></ul>
Creating Additional Drawing Objects	<ul style="list-style-type: none"><li>• Edit polyline features</li></ul>
Parametric Design	<ul style="list-style-type: none"><li>• Apply geometrical and dimensional constraints</li></ul>
Working with Annotative Objects	<ul style="list-style-type: none"><li>• Use annotative text and dimensions in a drawing at various viewport or annotation scales</li></ul>
Insert and Manage External References	<ul style="list-style-type: none"><li>• Apply External References</li></ul>
Isolate or Hide Displayed Objects	<ul style="list-style-type: none"><li>• Apply hide and isolate techniques to objects</li></ul>

For more information  
<http://www.autodesk.com/certification>  
Find an Autodesk Certification Center  
<http://autodesk.starttest.com>