

# Autodesk

## Streamline® 2008

Achieve maximum  
project visibility.



Autodesk®

# Achieve Maximum Project Visibility

Accelerate your product development process. With the Autodesk Streamline® on-demand collaborative project management solution you can easily and securely share documents across your organization and beyond your firewall.

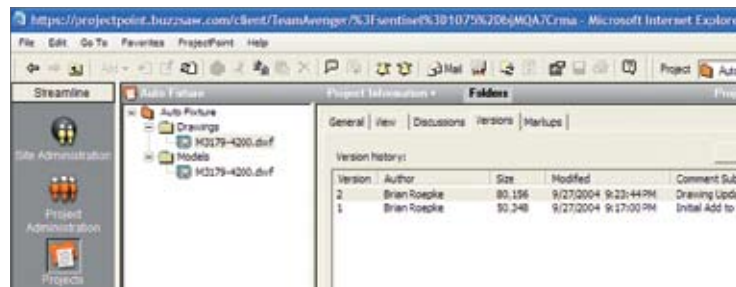
Autodesk Streamline helps you handle the process of collaborating with partners outside your organization. Autodesk Streamline gives you a single online location for storing, managing, and controlling project documents. With its intuitive interface, your extended team can work productively with customers and suppliers outside your firewall to get designs approved in less time.

Autodesk Streamline enables you to share drawings and specifications with your suppliers in one location, on demand. It helps keep your projects moving by notifying relevant personnel when new documents are posted and by tracking when reviews and approvals are overdue. Rather than sending documents by email—and then dealing with disparate versions, missing attachments, and slow servers—use Autodesk Streamline as a central location for all project documents.

## Collaboration for Your Extended Manufacturing Team

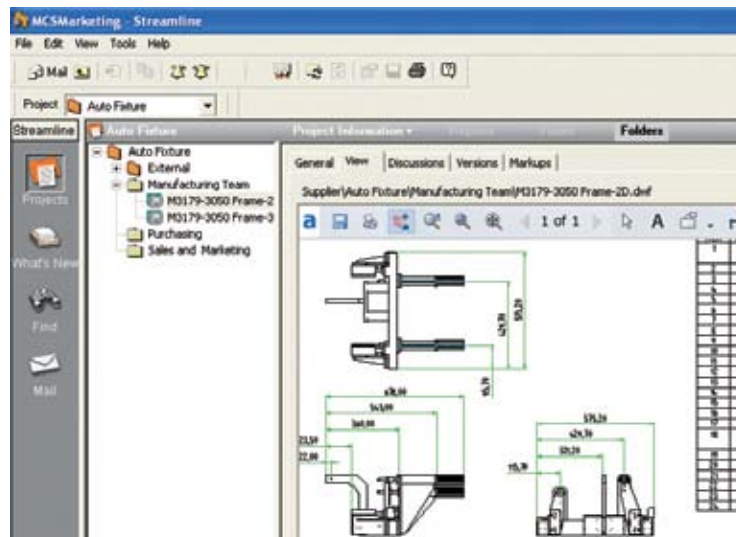
### Share Your Design Data

Share design data in a lightweight, easy-to-use, and secure format by exporting and publishing designs (including related properties such as mass and volume) in DWF™ file specification or Autodesk Streamline package format from all Autodesk manufacturing products.



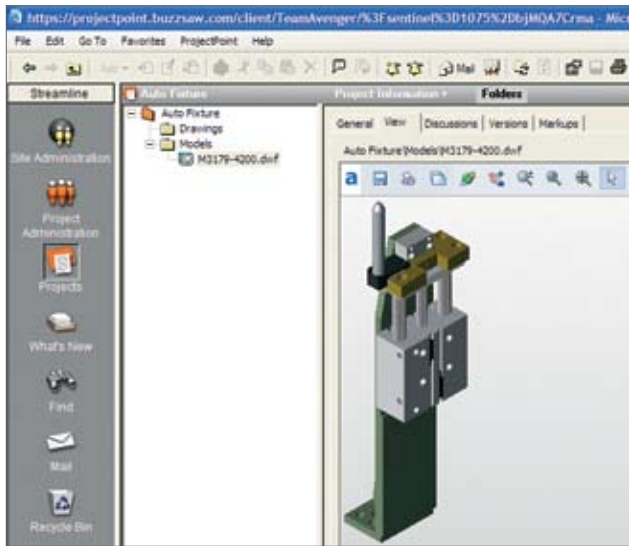
### DWF Support

Autodesk Streamline integrates the free\* Autodesk® Design Review software, allowing teams to digitally review, measure, mark up, and comment on 2D and 3D designs while protecting your IP. Store, manage, and view all versions of designs as DWF files, including who has reviewed what and when. Autodesk Streamline users can also access rich design data such as bill of materials, finite element analysis (FEA) results, mass, and object data—exactly as the designer intended.



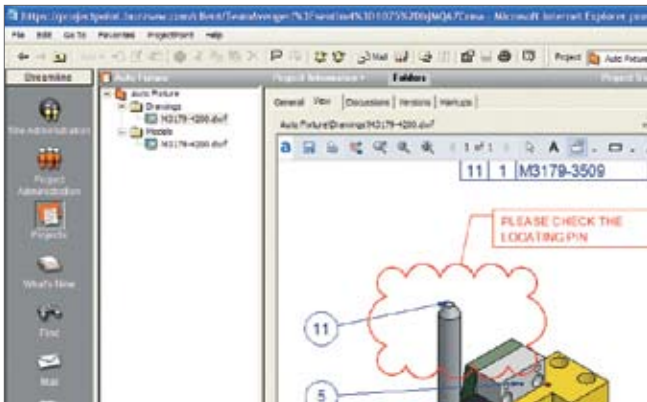
### Integration with 3D DWF Format

Safely and securely publish 3D models as DWF files from Autodesk® Inventor™ software directly to the Autodesk Streamline service. View, rotate, and orbit 3D drawings containing thousands of components and parts to get a full understanding of the designer's intent.



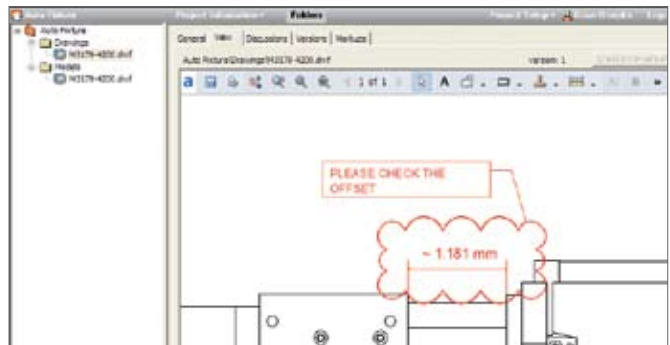
### Integration with Autodesk Design Review

Add the Autodesk Design Review to your Autodesk Streamline collaboration environment and enable users to mark up and provide feedback on designs directly in the DWF file. Using Autodesk Design Review, users can review and mark up designs and then save their DWF files with comments back into Autodesk Streamline, providing direct, in-context feedback.



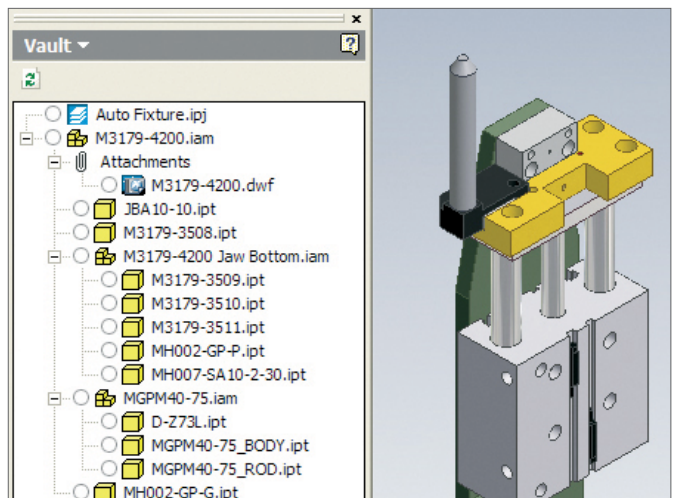
### Easy Viewing and Markup

Using the Autodesk Streamline viewer, team members can view, mark up, and measure 2D and 3D designs containing thousands of components without needing a license for the corresponding computer-aided design (CAD) product. By relaying precise comments about design details, your team avoids miscommunication, so that projects stay on track for on-time completion.



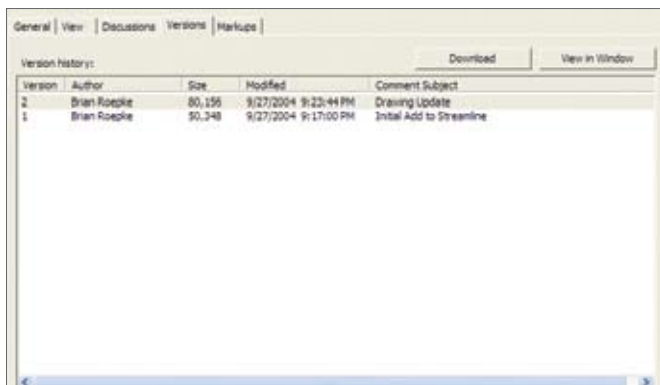
### Autodesk Vault Integration

Instantly notify key people, and offer suppliers and customers access to your latest design data. Autodesk® Vault software automatically publishes and uploads design data to Autodesk Streamline when the engineering team makes updates.



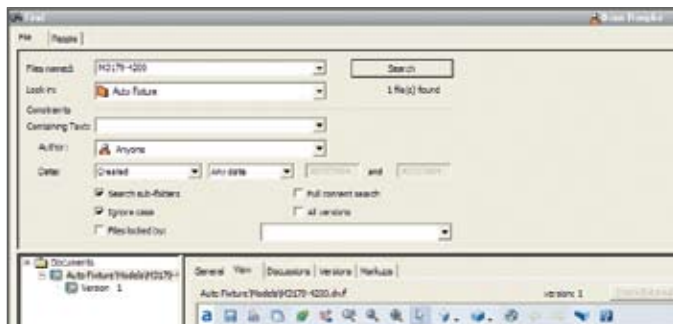
### File Version Tracking

Virtually eliminate the problem of overwriting work in progress and take advantage of past versions for reference. Autodesk Streamline technology automatically detects when a newer version of a file is uploaded to the system and prompts you to add comments or send email notifications.



### Fast Search

Quickly search through documents, designs, and logs for the information you need, when you need it. The Autodesk Streamline can search files for content such as component name, mass, and volume.



### Maintain File-Level Threaded Discussions

Discuss and keep a record of changes and decisions about your documents. Initiate, participate in, and review discussion items related to a specific version of a document.

### Centralized On-Demand Project Management

#### Manage Multiple Projects On Demand

Manage projects in a single location, for consistent and accurate access to project data. Create a single site containing access-controlled projects for your entire extended team.

#### Use Flexible Group Types

Maintain confidentiality by creating groups for working with suppliers or customers who may compete with each other. An Autodesk Streamline group type, Private Groups, prevents members from seeing each other's data or identity.

#### Reuse Standard Project Templates

Save time and maintain process consistency by reusing a standard project template to set up and start new projects. Copy an entire project—project folders, members, permissions, files, logs, forms, markups, discussions, and comments—and reuse it for another project.



# Easy Installation, Use, and Maintenance

## Project Size Quotas

Make administration of multiple projects easier by balancing projects across multiple teams according to business needs. Site administrators can set “warning” and “hard” limits on projects and specify the behavior (notifications, prevention of additional uploads, and so forth) when these limits are approached or reached.

## Customizable Email

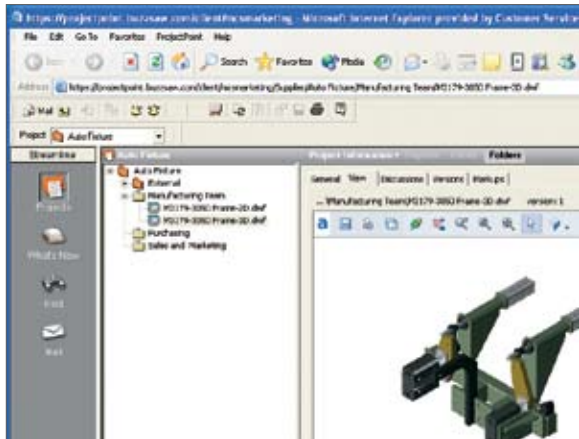
Administrators can tailor the welcome email to project members, including text, login information, and links, and then save emails as templates for future use. As a result, team members can get started on Autodesk Streamline projects quickly because email is not confusing or mistaken for SPAM.

## Use Activity Log to Track Data

Use the activity log to easily monitor activity and maintain accountability when working with large groups of users. Track usage statistics, project and member activity, storage space used, documents uploaded or downloaded, and active or inactive projects. Administrators can view user information such as IP address, last logon, and activity level, and disable multiple users at one time.

## Autodesk Streamline Web Access

Access all Autodesk Streamline functions, including managing and communicating on product documents, notifications, workflow, and reporting, without downloading and installing a separate, bulky PC application. The Autodesk Streamline web-based, approach dramatically simplifies administration and maintenance. Since it runs in the browser, Autodesk Streamline supports diverse Microsoft® Windows® versions and hardware platforms.



## Easily Manage Permissions

Quickly and easily view and modify permissions for all site users from a single, central location. Graphically assign and view user permissions, including different permissions within a project; sort by user type or group; or export to CSV format for offline printing and viewing.

## Install and Update Automatically Through the Web

Minimize installation hassles and maintain updates without spending time on individual workstations. Use the web to automatically install and update clients without the need for a CD or other media.

## Use Familiar Windows Explorer–Like Interface

Autodesk Streamline is easy to learn and use because it offers a familiar Microsoft Windows Explorer–like interface and includes functionality such as drag-and-drop editing and right-click menus.

## Hosted by Autodesk

Autodesk Streamline is securely hosted by Autodesk, so there's no need to install and maintain hardware or software on your site, or perform software upgrades.

## Standards-Based, Highly Available, Secure Architecture

## Application Programming Interface (API)

Customize your applications and extend their functionality with the Autodesk Streamline API. Use it to customize your applications to upload, download, copy, move, and delete files and folders.

## Secure Sockets Layer (SSL) Transactions

Be confident that your data is secure when transmitted over the Internet. All data transferred to and from your Autodesk Streamline site is encrypted using SSL technology, providing up to 128-bit encryption.

## Fault-Tolerant EMC Tier 5 System with Automatic Nightly Backups

Your company and project data is protected with some of the highest levels of fault tolerance and data redundancy available in any computing environment. In fact, Autodesk is a Tier 5 member of the EMC Proven™ program, offering the highest EMC® enterprise-level backup and restore, data migration, and remote mirroring capabilities.

## Highly Secure Environment

Gain one of the highest levels of security with around-the-clock protection and constant monitoring. The data center is guarded and under video surveillance to enable maximum access control and data protection.

## Autodesk Manufacturing

Never before have design applications and data management tools come together to simplify the way manufacturers design products and drive them through the manufacturing process. Autodesk provides a complete, interoperable line of industry-leading software integrated with a worldwide network of services and partners. Gain access to technical expertise for implementation, and utilize training and support programs direct from Autodesk to help use your design and data management software more effectively. Software maintenance programs allow you to stay up-to-date with the latest product releases and upgrades for your software. Designed to be deployed incrementally for minimal business disruption, Autodesk tools for manufacturing provide the most effective way to stay ahead of the competition and achieve maximum return on your software investment.

### Learn More or Purchase

Stay ahead of the competition with Autodesk's practical approach to data management. For more information, visit [\*\*www.autodesk.com/streamline\*\*](http://www.autodesk.com/streamline).

For more information on extending the power of your data management technology, visit [\*\*www.autodesk.com/subscription\*\*](http://www.autodesk.com/subscription).

For more information on making the most of your software investment, visit [\*\*www.autodesk.com/consulting\*\*](http://www.autodesk.com/consulting).

Purchase Autodesk Streamline through your Autodesk Premier Solutions Provider or to locate the reseller nearest you, visit [\*\*www.autodesk.com/reseller\*\*](http://www.autodesk.com/reseller).

\*This product is subject to the terms and conditions of the end-user license agreement that accompanies download of this software.

Autodesk, Autodesk Inventor, Autodesk Streamline, DWF, and Inventor are registered trademarks or trademarks of Autodesk, Inc., in the USA and/or other countries. All other brand names, product names, or trademarks belong to their respective holders. Autodesk reserves the right to alter product offerings and specifications at any time without notice, and is not responsible for typographical or graphical errors that may appear in this document. © 2007 Autodesk, Inc. All rights reserved. 000000000000117620