

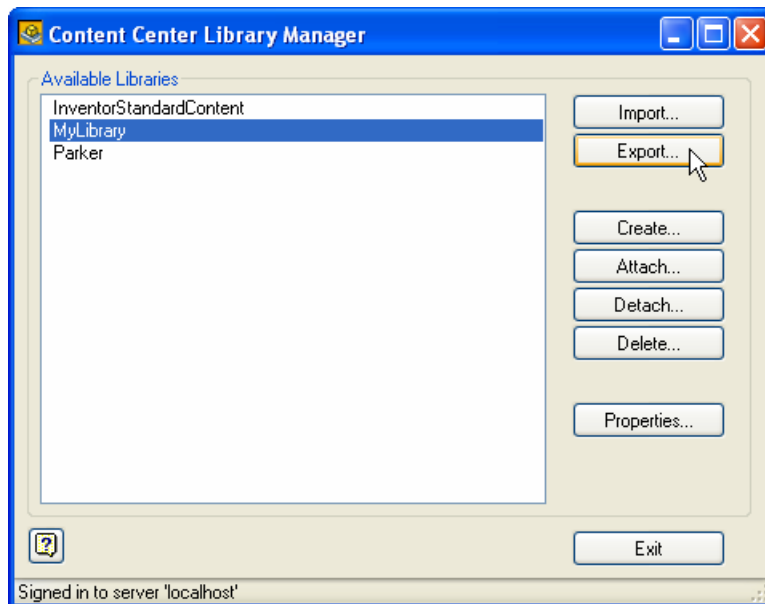
Migrating Autodesk® Inventor 10 Content Center Customized User Libraries to ADMS 2008 for Use with Autodesk® Inventor 2008

The purpose of this document is to provide instructions for the migration of user Content Center libraries created in Inventor 10 into ADMS (Autodesk® Data Management Server) 2008 for use in Inventor 2008.

For further information regarding installation of ADMS 2008 and Inventor 2008 see the *..Autodesk\Inventor 2008\Setup\Docs\CC_R2008_Install_guide.pdf*

To migrate Inventor 10 customized user content center libraries to ADMS 2008 with Inventor 10 installed

1. Export the user customized libraries from Inventor 10
 - Start the Content Center Library Manager (Start menu > Programs > Autodesk > Inventor 10 > Tools> Content Center Library Manager).
 - Select your user library from the list of available libraries, and click Export.

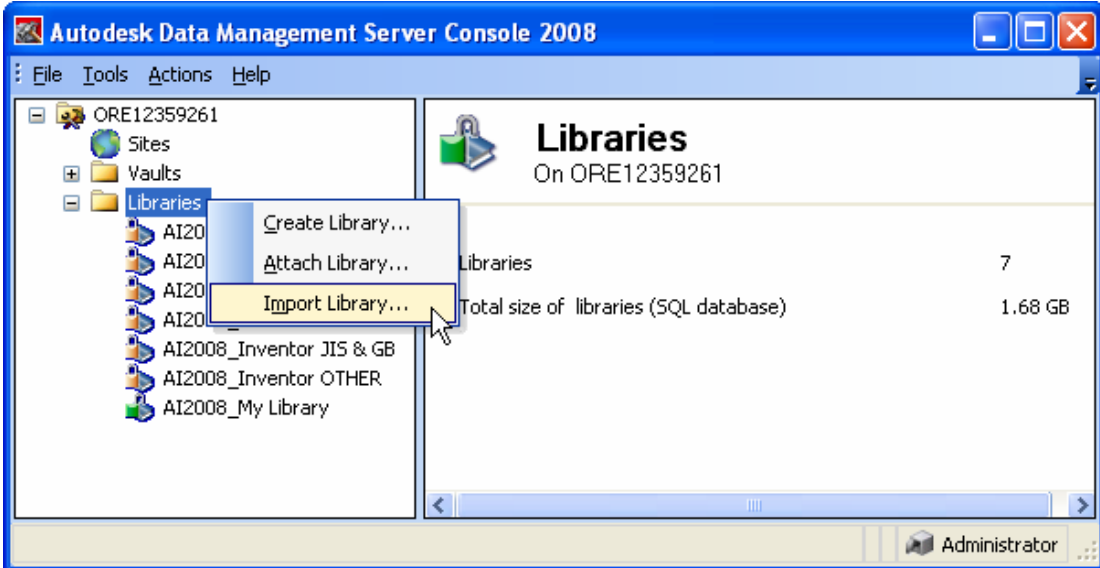


- Pick a location for a copy of the library that is created by the export function.
- Repeat the export steps for all the user customized libraries that you want to migrate for use in Autodesk Inventor 2008.

Warning: Inventor standard content libraries (InventorStandardContent and Parker) are not accepted for migration into ADMS 2008.

2. If not already installed, install the Autodesk Data Management Server 2008.
3. Start Autodesk Data Management Server 2008 Console (Start menu > Programs Autodesk > Autodesk Data Management > ADMS Console 2008).

4. Import previously exported libraries from Content Center Libraries Manager.
 - Right-click the Libraries entry, and choose Import Library.



- Browse to the location of previously exported libraries from Content Center Libraries Manager and select the library .mdf file.
 - Enter desired Library Name and click OK.
 - Repeat the import steps above for all your user libraries previously exported from Content Center Libraries Manager.
5. The libraries are imported, and by default are left in the Autodesk Inventor 11 partition. To make them available for use in Autodesk Inventor 2008, copy them into the Autodesk Inventor 2008 partition. See the following section.

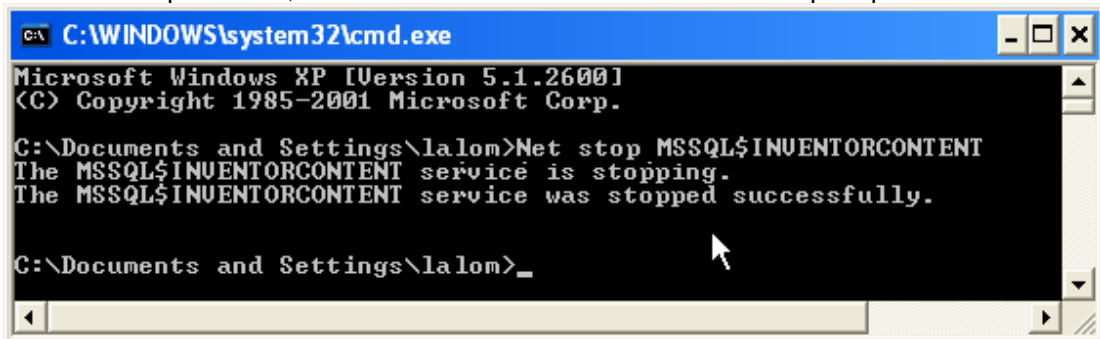
To migrate Inventor 10 Content Center customized user libraries into ADMS 2008 if Inventor 10 was uninstalled

When you remove Inventor 10, you remove the software, but not the Content Center database (Microsoft® SQL database); this remains on the machine unless you manually remove Microsoft SQL Server Desktop Engine (INVENTORCONTENT) and manually delete files in

...\Program Files\Microsoft SQL\Server\MSSQL\$INVENTORCONTENT\Data location. If the files have been removed then the user libraries migration cannot be completed.

To import the Inventor 10 Content Center user libraries into ADMS 2008

1. If not already installed, install the Autodesk Data Management Server 2008.
2. Make sure that the Microsoft SQL service used for Inventor content (MSSQL\$INVENTORCONTENT) is not running during the import of libraries. To stop the service, do one of the following:
 - Enter “Net stop MSSQL\$INVENTORCONTENT” from the command prompt

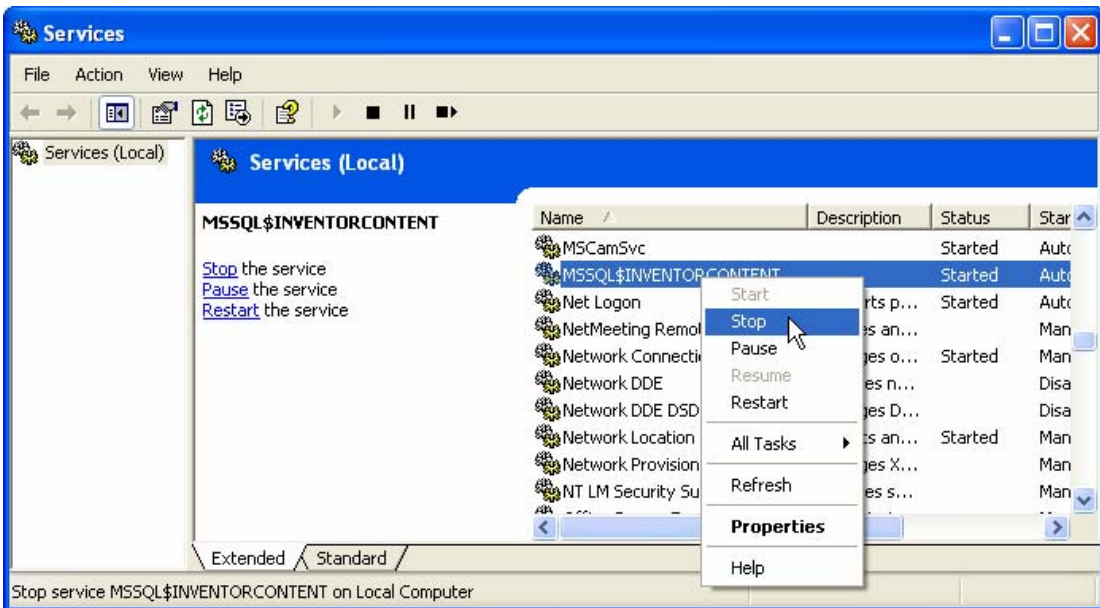


```
C:\WINDOWS\system32\cmd.exe
Microsoft Windows XP [Version 5.1.2600]
(C) Copyright 1985-2001 Microsoft Corp.

C:\Documents and Settings\lalom>Net stop MSSQL$INVENTORCONTENT
The MSSQL$INVENTORCONTENT service is stopping.
The MSSQL$INVENTORCONTENT service was stopped successfully.

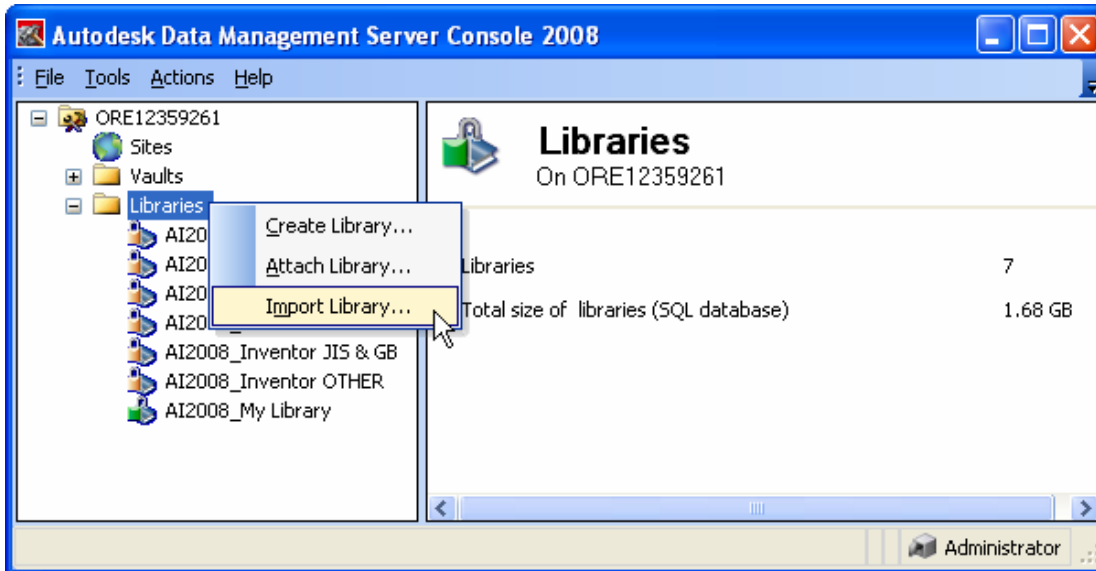
C:\Documents and Settings\lalom>_
```

- Stop the MS SQL instance INVENTORCONTENT by using the Services administration application from Windows Control Panel.



3. Start Autodesk Data Management Server 2008 Console (Start menu > Programs > Autodesk > Autodesk Data Management > ADMS Console 2008).

4. Right-click the Libraries entry, and choose Import Library.



5. Browse to the folder
`..\Program Files\Microsoft SQL\Server\MSSQL$INVENTORCONTENT\Data`
and select your user library `.mdf` file.
6. Enter a Library Name, and click OK.
7. Repeat the import steps above for all the user libraries that you want to use in Autodesk Inventor 2008.

Warning Inventor standard content libraries (InventorStandardContent and Parker) are not accepted for migration into ADMS 2008

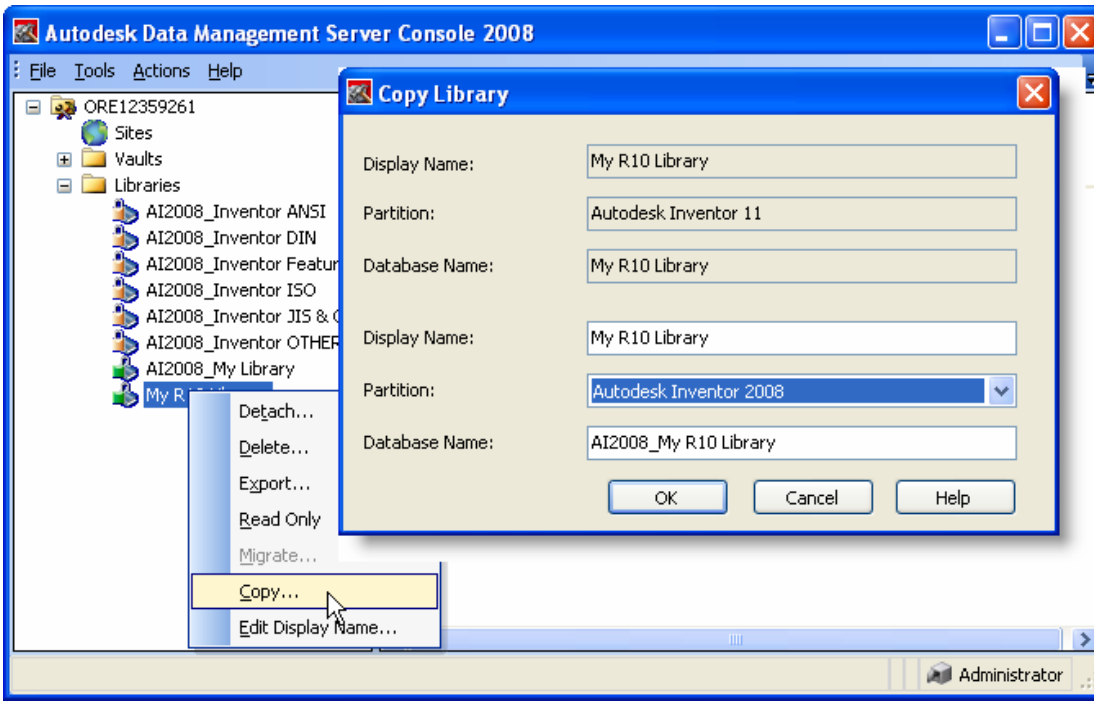
8. The libraries are imported and by default are left in the Inventor 11 partition. To make them available for use in Autodesk Inventor 2008, copy them to the Inventor 2008 partition. See the following section.

You need to stop the Microsoft SQL server INVENTORCONTENT service before you import libraries. If the service is running, the import of libraries will not be successful.

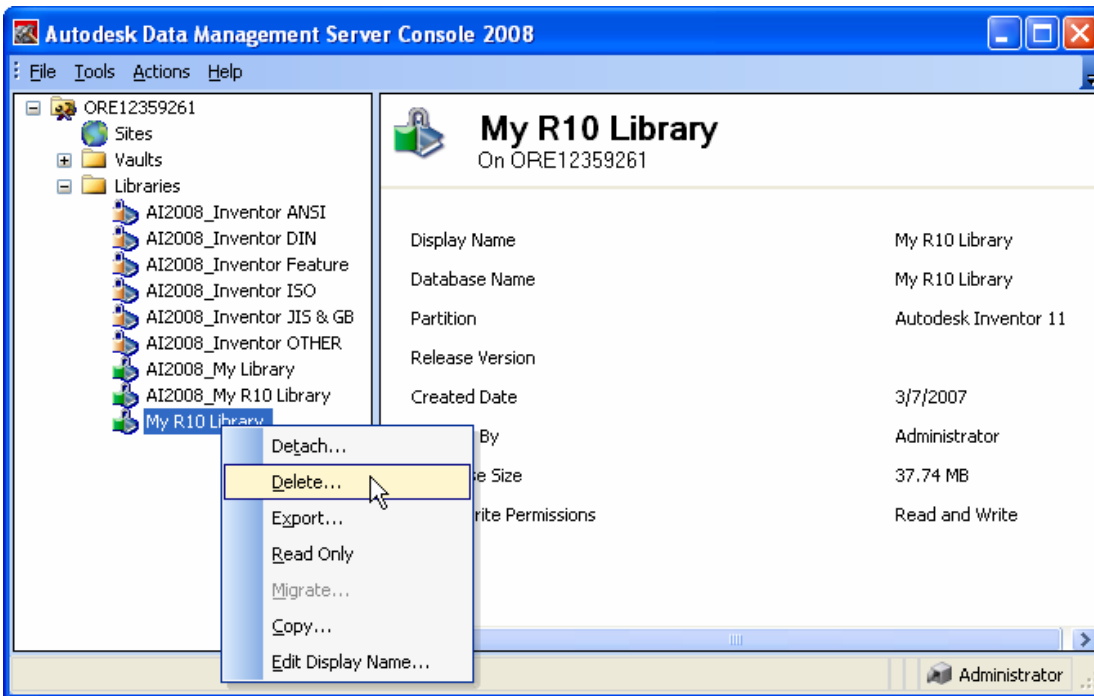
To copy libraries from the Autodesk Inventor 11 partition to the Autodesk Inventor 2008 partition

This procedure completes the migration of the libraries.

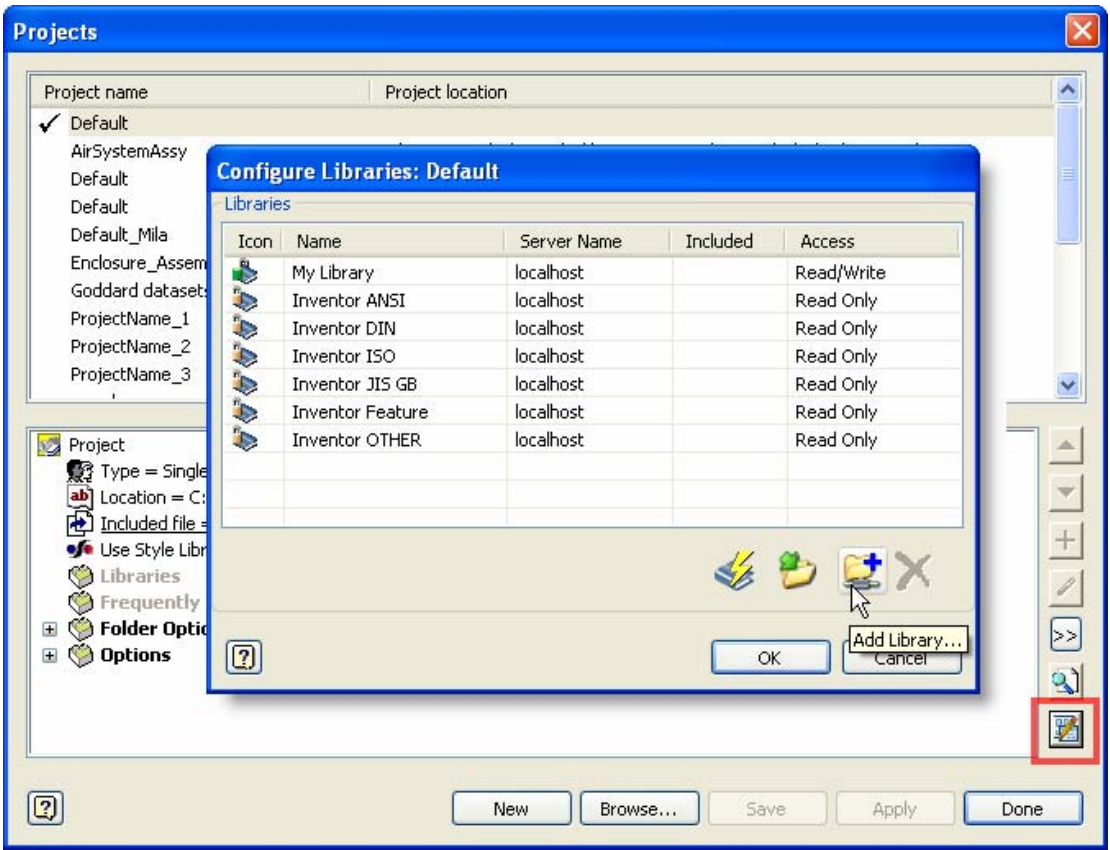
1. Start Autodesk Data Management Server 2008 Console (Start menu > Programs > Autodesk > Autodesk Data Management > ADMS Console 2008), if not already running.
2. Right-click the Library and select Copy to copy the library to the Autodesk Inventor 2008 partition.



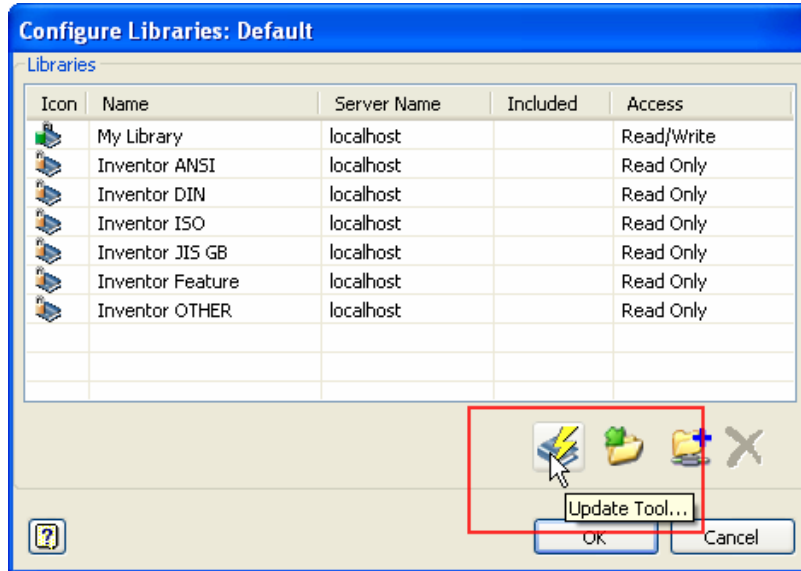
3. After you copy all the user libraries into the Inventor 2008 partition, you can delete the original libraries in the Inventor 11 partition since they consume disk space.



4. Add the libraries into Content Center Libraries configuration using the Configure Libraries command in the Inventor Project Editor. This must be done for each project that requires access to the custom libraries.



5. All legacy user Content Center libraries must be evaluated by the Content Center Update tool before you can use them in the new version of Autodesk Inventor. Content Center automatically recognizes the presence of a legacy library and prompts for an update. You can also run the Update manually from the Configure Libraries dialog box.



Autodesk [and other products] are either registered trademarks or trademarks of Autodesk, Inc., in the USA and/or other countries. All other brand names, product names, or trademarks belong to their respective holders. Autodesk reserves the right to alter product offerings and specifications at any time without notice, and is not responsible for typographical or graphical errors that may appear in this document.

© 2007 Autodesk, Inc. All rights reserved.