

Autodesk Infrastructure Solutions
Autodesk® Topobase™
Autodesk® Architectural Desktop
Autodesk MapGuide®
Autodesk Map® 3D
Oracle Spatial



"We can now update facility information ten times more quickly, but the biggest advantage comes from how we use our integrated data. By integrating different types of asset information, we can manage our complex assets more intelligently."

Bernd Loh,
Manager for GIS and CAFM,
Henkel

Henkel Updates Asset Data Ten Times Faster

Henkel uses Autodesk Topobase and Oracle Spatial to integrate asset data and improve productivity throughout its facilities

Project Summary

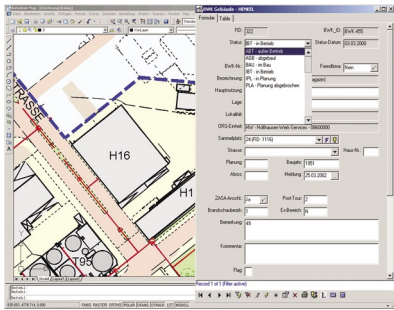
A leader in consumer goods, Henkel offers brands and technologies that make people's lives easier, better, and more beautiful. Henkel, a Fortune Global 500 company based in Düsseldorf, Germany, operates in three strategic business areas: home care, personal care, and adhesives, sealants, and surface treatments. In fiscal 2005, Henkel generated sales of 11.974 billion euros. More than 50,000 employees work for Henkel worldwide. People in approximately 125 countries around the world trust brands and technologies from Henkel. To keep its facilities and asset management process on track, the company relies on Autodesk software and Oracle Spatial to create, manage, store, and share all its asset-related data. Since turning to Autodesk and Oracle Spatial, Henkel has been able to:

- Produce themed maps based on users' responsibilities
- Update spatial and design data as much as ten times more quickly
- Maintain accurate data more cost-effectively
- Integrate asset-related alphanumeric and spatial data within Oracle

The Challenge

Henkel's facilities in Düsseldorf consist of 400 buildings, including plants, warehouses, and offices, covering over 150 hectares. Through the years, Henkel has relied on maps to help it maintain each of its buildings efficiently, safely, and securely. First, the company used paper maps. In the 1990s, Henkel turned to computer-generated maps. Though these maps proved vastly more efficient than paper, they were time-consuming to produce because of the lack of integration between spatial data—such as the locations of pipes—and alphanumeric data—such as maintenance schedules.

According to Bernd Loh, Henkel's manager for GIS and CAFM, "Our staff had to manually cross-reference multiple databases to produce useful facilities maps. They also had to update multiple systems when the status of assets changed. We found this process inefficient and prone to errors."



“Because our solution uses open data, we were able to establish a connection to our SAP applications within Oracle Spatial. We no longer have to update multiple systems, which increases data integrity by reducing the risk of errors.”

Bernd Loh,
Manager for GIS and CAFM,
Henkel

The Solution

With so many assets to maintain across its facilities simultaneously, Henkel decided it needed an integrated solution that would facilitate more dynamic asset management. After evaluating its options, Henkel chose a solution based on Autodesk Topobase, Autodesk Map 3D, Autodesk Architectural Desktop, and Oracle Spatial. For assistance with implementation and ongoing support, Henkel turned to Geoconsult, a provider of GIS and facilities management professional services.

Today, Henkel manages data and generates themed maps with Autodesk Topobase and Autodesk Map 3D, creates and maintains interior building information using Autodesk Architectural Desktop, and stores all asset data within Oracle Spatial. And to extend the system to users without spatial expertise, Henkel uses Autodesk MapGuide, which dynamically builds and displays maps over the company’s intranet.

The fact that Oracle and Autodesk technology employ an open data model was a key factor in Henkel’s choice. With proprietary data models, it can be difficult to integrate spatial and alphanumeric data. Herr Loh explains, “Because our solution uses open data, we were able to establish a connection to our SAP applications within Oracle Spatial. We no longer have to update multiple systems, which increases data integrity by reducing the risk of errors. Our data is also easier to maintain and backup.”

Themed Maps Boost Productivity

Henkel’s Autodesk and Oracle system has made it much easier for the company to produce themed maps that cover virtually every aspect of its

installation, helping the company to manage its facilities more productively. Henkel’s security personnel use maps that highlight restricted areas, document incidents, and plot optimal patrol routes. Its maintenance teams refer to maps that focus on their responsibilities, such as pipes and underground cables. And many employees access these responsibility-oriented themed maps through Autodesk MapGuide.

“With Autodesk, we have been able to create maps that bring together pipe design and location with information about what every pipe carries,” says Herr Loh. “This is useful in maintenance planning, safety, and asset documentation. The maps display real-time information coming out of Oracle, so our employees are able to work from accurate and timely information.”

The Result Agile Asset Management

Today, Henkel is managing over 300 tables of data and 1.2 million features with Autodesk Topobase. The data covers all aspects of its manufacturing facilities, including more than 250 kilometers of pipes, 500 kilometers of underground cable, and building information created with Autodesk Architectural Desktop. “Our facility is as complex as a small city,” observes Herr Loh. “We can now update facility information ten times more quickly, but the biggest advantage comes from how we use our integrated data. By integrating different types of asset information, we can manage our complex assets more intelligently.”

For more information

To learn more about how Autodesk and Oracle solutions work together to streamline asset management, visit us on the web at www.autodesk.com/infrastructure