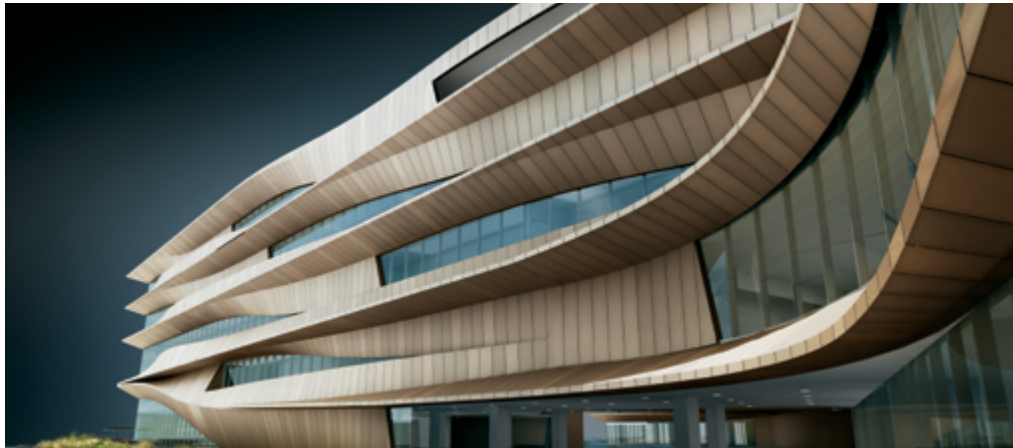


Autodesk® Revit® Architecture 2013

Autodesk Certification Exam Preparation Roadmap

Autodesk certifications are industry-recognized credentials that can help you succeed in your design career—providing benefits to both you and your employer.

The certifications provide reliable validation of skills and knowledge, and they can lead to accelerated professional development, improved productivity, and enhanced credibility.



Botswana Innovation Hub — SHoP Architects

Autodesk highly recommends that you structure your examination preparation for success. This means scheduling regular time to prepare, reviewing this exam preparation roadmap, using the Autodesk Official Training Guides, and taking a course at one of our Authorized Training Centers. Equally as important, actual hands-on experience is recommended.

The **Autodesk Revit Architecture Certified User** exam includes both academic and industry requirements designed to confirm that Revit Architecture users have the skills necessary to continue their design careers—whether they attend college, enter the workforce, or work toward additional levels of industry certification. The exam consists of 30 questions combining multiple-choice and performance-based items to ensure students understand and can effectively use Revit Architecture. The exam has a 1-hour time limit. For more information, visit:

<http://www.certiport.com/autodesk>

The **Revit Architecture 2013 Certified Professional** exam is aimed at assessing Professional users' knowledge of the tools, features, and common tasks of Revit Architecture 2013. The exam is comprised of 35 questions, of which the majority require you to use Revit Architecture to create or modify a data file, and then type your answer into an input box. Other question types include multiple choice, matching, and point-and-click (hotspot). The exam has a 2-hour time limit (in some countries, the time limit may be extended).

Important Program Changes

The **Certified Associate** exam will not be made available for Revit Architecture 2013. To obtain the status of Revit Architecture 2013 Certified Professional, or when recertifying from 2012 Associate and/or 2012 Professional status, you must pass the Revit Architecture 2013 Certified Professional exam. You may take the exam up to three times within a 12-month period.

Official Preparation Material

The **Autodesk Official Training Guides** for the Revit Architecture Certification exams are published by Wiley Publishing and Ascent. These guides are available from booksellers and online booksellers worldwide.

The **Autodesk Education Community** offers students and educators free software, learning materials, and classroom support. Schools can become Certiport® Centers to provide the Autodesk Certified User exams in their classrooms. Learn more at: <http://students.autodesk.com>

ATC® Instructor-Led Courses

The Autodesk Authorized Training Center (ATC®) program is a global network of professional training providers offering a broad range of learning resources. Autodesk recommends that test takers consider taking a certification preparation course at one of these centers. Visit the online ATC locator at: <http://www.autodesk.com/atc>

Recommended Experience Levels for Revit Architecture Certification Exams

Actual hands-on experience is a critical component in preparing for the exam. You must spend time using the product and applying the skills you have learned.

- **Certified User exam:**
Revit Architecture 2011-2013 course (or equivalent) plus 50 hours of hands-on application
- **2013 Certified Professional exam:**
Revit Architecture 2013 course (or equivalent) plus 400 hours of hands-on application

Revit Architecture 2013

Exam Topics and Objectives

We recommend that you review the topics and objectives during your preparation for certification. The Autodesk Official Training Guides for the Autodesk Revit Architecture Certification exams are published by Wiley Publishing and Ascent. The guide covers the topics and objectives listed below. Please note that not all objectives will be tested during your certification exam.

Autodesk Revit Architecture Certified User

Industry-Specific Topics	Sub-Topics
User Interface	Definitions UI Navigation/Interaction Drawing Window Navigation Control Zoom
File Management	Definitions Project Files Open existing Revit project Create new Revit project Save
Views	View control and properties View Types Cameras
Levels	Definitions
Walls	Home Tab > Wall Options Bar Openings Join Materials
Doors	Home Tab > Door Options Bar Model in place
Windows	Home Tab > Window Options Bar Model in place
Component	Home Tab > Component Options Bar Component Host Families

(Continued)

Industry-Specific Topics	Sub-Topics
Columns and Grids	Definitions Home Tab > Grid Grid Properties Home Tab > Column Column Properties Modify
Stairs and Railings	Stair Types and Properties Stair Placement Options Railing Types and Properties Railing Placement Options
Roofs and Floors	Roof Types and Properties Roof Elements Floors Types and Properties
Sketching	Geometry Fillet, Trim Snaps
Annotations	Text Dimensions Tags
Schedules	Schedule Types Legends Keynotes
Construction Document Sets	Sheet Set up Printing Rendering

For more information on the learning topics and User Skills, please go to <http://www.certipoint.com/autodesk>

Revit Architecture 2013

Autodesk Revit Architecture 2013 Certified Professional

Topics	Objectives
Collaboration	<ul style="list-style-type: none">Copy and monitor elements in a linked fileUse worksharingImport DWG files into Revit
Documentation	<ul style="list-style-type: none">Create and modify filled regionsPlace detail components and repeating detailsTag elements (doors, windows, etc.) by categoryUse dimension stringsSet the colors used in a color scheme legend
Elements	<ul style="list-style-type: none">Change elements within a curtain wall (grids, panels, mullions)Create compound wallsCreate a stacked wallDifferentiate system and component familiesCreate and modify family categoriesCreate a new family typeModify an element's type parametersUse Revit family templates
Modeling	<ul style="list-style-type: none">Assess review warnings in RevitCreate a building padDefine floors for a massCreate a stair with a landingCreate elements such as a floors, ceilings, or roofsGenerate a toposurfaceModel railingsWork with phasesEdit a model element's material (door, window, furniture)Change a generic floor/ceiling/roof to a specific typeAttach walls to a roof or ceiling
Views	<ul style="list-style-type: none">Define element properties in a scheduleControl visibilityUse levelsCreate a duplicate view for a plan, section, elevation, drafting view, etc.Create and manage legendsManage view position on sheetsMove the view title independently of the viewOrganize and sort items in a schedule

For more information
<http://www.autodesk.com/certification>

Find an Autodesk Certification Center
<http://autodesk.starttest.com>