

Autodesk® Fabrication CAMduct™ 2013

Comprehensive Ductwork Manufacturing Control

Image courtesy of
Dunham, Perkins+Will, MBJ,
and St. Cloud Hospital

One Solution to Control Your Production Line

Autodesk Fabrication CAMduct provides comprehensive technology that helps ductwork manufacturers streamline production and control the manufacturing of ductwork components.

Autodesk Fabrication features multiple software packages to improve design-to-detailing and fabrication workflows and help enhance your productivity. Help improve collaboration and data sharing between your business and MEP contractors.

Comprehensive Software for Ductwork Manufacturing

Autodesk® Fabrication CAMduct™ 2013 software provides tools specifically built for HVAC ductwork manufacturing, helping firms of all sizes meet their manufacturing deadlines and improve productivity. CAMduct helps you take full control of the manufacturing process without having to change the way you traditionally work. With pressure class-driven content and tools for customization, Fabrication CAMduct helps meet a wide variety of project needs.

Streamline Job Creation

Fabrication CAMduct helps streamline job entry and manufacturing production through the use of an extensive parametric ductwork pattern library. The database contains a wide range of standard and sophisticated rectangular, round, and oval ductwork fittings with associated developments. All patterns are parametric—including metric or imperial dimensions, connectors, seams, notches, and more—so you can control the requirements of each manufactured component with help from industry standard or user-defined specifications. When job-specific custom components are required, integrated tools enable you to more quickly tailor existing library components to better fit your needs.

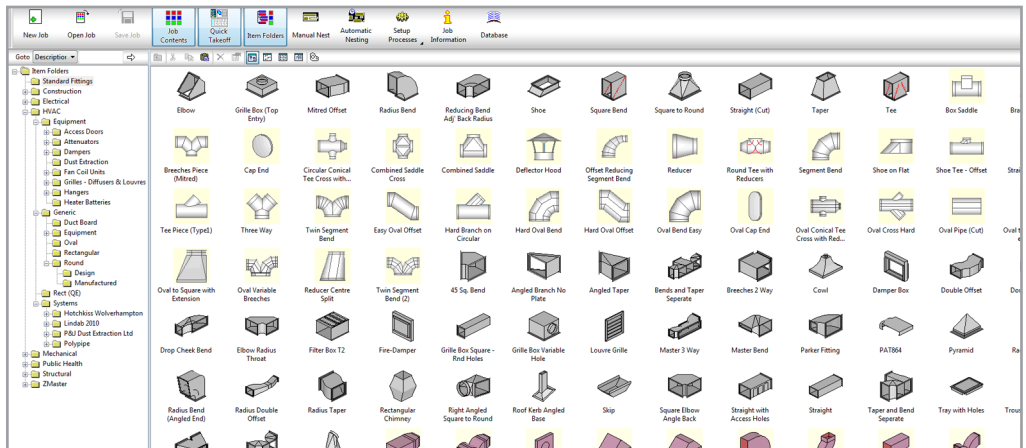
Job changes can be streamlined using Autodesk® Fabrication RemoteEntry 2013 software, enabling you to remotely order components and request change orders from the project site.

More Quickly Realize ROI

Fabrication CAMduct is designed to be accessible yet powerful. Whether your workforce is already familiar with software-based job entry, or you and your team are implementing a fully automated for the first time, Fabrication CAMduct can minimize your implementation downtime. The ease of use graphical interface (GUI) and tool settings enhance the productivity of both experienced and novice users.

Support Evolving Business Needs

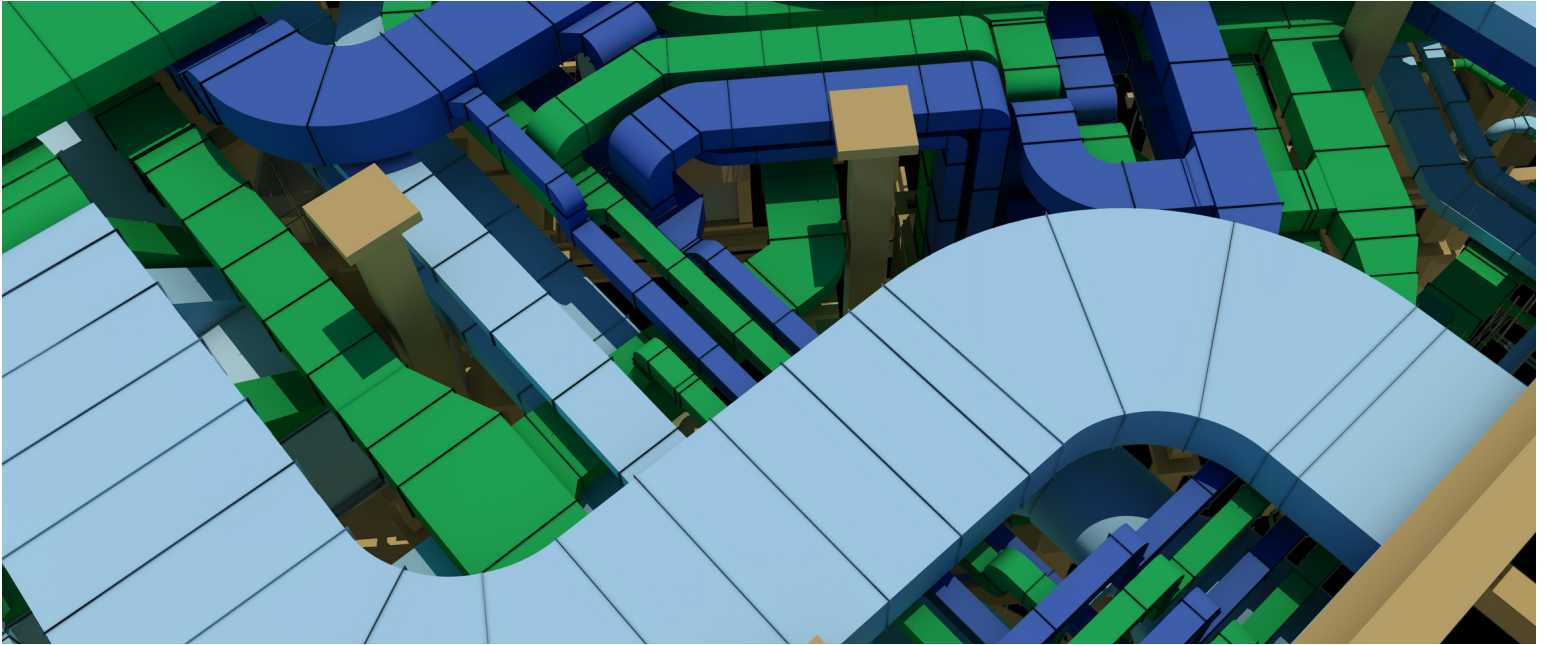
Fabrication CAMduct can help you control your whole production line, or just one machine. As your business expands you can customize the software to automatically output ductwork manufacturing to several types of machines, including CNC cutters, rectangular duct decoilers, tangential knife cutters, and routing machines. Fabrication CAMduct contains post-processors that support a variety of major machine manufacturers, enabling you more quickly get started with ductwork production.



Example of parametric components library

Outpace Your Competitors

Autodesk Fabrication CAMduct provides tools that support BIM workflows.



Gain a Competitive Advantage with BIM

Differentiate your firm from the competition and win more work with help from fabrication tools that support Building Information Modeling (BIM) workflows. Close the gap between design, detailing, and manufacturing by using your client's Autodesk® Fabrication FABmep™ 2013 model—which is based on the design intent of the Autodesk® Revit® 2013 model—directly in Autodesk Fabrication CAMduct software. The intelligent models produced using Autodesk® BIM solutions can be utilized downstream in CAMduct for material and procurement analysis and ductwork manufacturing. You can also use Autodesk® Fabrication Tracker 2013 software to provide your clients with real-time status tracking for improved collaboration and data sharing, helping project managers and other stakeholders better manage and control the construction process. Autodesk Fabrication Tracker can help provide cash flow benefits to you and your company by enabling you to proportionately claim for the true value of manufactured, delivered, and installed items without having to wait for the job to be completed. If your clients are transitioning to BIM, you can use their Autodesk® Fabrication CADmep™ 2013 models in the same way.

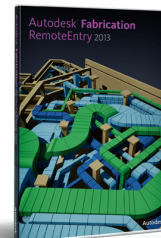
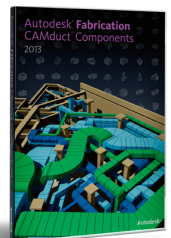
Tools that Support Your Workflow

Fabrication CAMduct includes an array of features to support and optimize your workflow. For example, the software's Job Costing feature enables you to: cost jobs based on material content, fabrication times, and site installation times; define multiple labor rates that allow for different skill levels, number of workers, and site difficulty factors; and create an unlimited number of fabrication and installation tables, and configure them to work on a variety of different breakpoints. For more detailed estimates and costing, Fabrication CAMduct can be directly linked to Autodesk® Fabrication ESTmep™ 2013 software.

You can achieve further efficiency and productivity gains by transferring job manufacturing and costing information from Fabrication CAMduct into a wide variety of third-party software packages using the software's Database Output feature, helping you to avoid manually intensive data analysis. Using the full control of components and associated data fields, you can manipulate and extract information to better meet your requirements. For times when you need to access and modify large quantities of object data, the software's Scripting feature helps reduce your reliance on manual intervention—enabling you to bulk update the Fabrication CAMduct model.

Job Entry Productivity Enhancements

Complement your manufacturing workflow with Autodesk® Fabrication CAMduct™ Components 2013 for job entry, helping you reduce job input times and improve your production rate. CAMduct Components is set up to match your original Fabrication CAMduct fitting library and specification database, helping to streamline your workflow.



A Complete Solution for Ductwork Manufacturing

Autodesk, Inc., is a leader in 3D design, engineering and entertainment software. Autodesk's comprehensive portfolio of intelligent 3D model-based solutions—including powerful BIM tools—helps AEC professionals gain valuable project insight to improve the way they plan, design, build, and manage projects. BIM is an integrated process for digitally exploring a project's key physical and functional characteristics. The process helps deliver projects faster and more economically, while minimizing environmental impact. Coordinated, consistent information is used throughout the process to design innovative projects; better visualize and simulate real-world appearance, performance, and cost; and create more accurate documentation.

Learn More or Purchase

Access specialists worldwide who can provide product expertise, a deep understanding of your industry, and value that extends beyond your software. To license Autodesk Fabrication software, contact Autodesk Reseller near you at www.autodesk.com/reseller.

Autodesk Education

Autodesk offers students and educators a variety of resources to help ensure that students are prepared for successful design careers. Educators can access design software, curricula, and teaching resources, while students can access free* software, training videos, design competitions, and career resources. Anyone can get expert guidance at an Autodesk Authorized Training Center (ATC®) site, and validate skills with Autodesk Certification. Learn more about Autodesk Education at www.autodesk.com/education.

Autodesk Subscription

Autodesk® Subscription gives you access to software upgrades and exclusive access to service and support benefits designed to help you get the most out of your Autodesk software. Learn more about Autodesk Subscription at www.autodesk.com/subscription.

Cover image courtesy of Autodesk, AutoCAD, ATC, CADmep, CAMduct, ESTmep, FABmep, and Revit are registered trademarks or trademarks of Autodesk, Inc., and/or its subsidiaries and/or affiliates in the USA and/or other countries. All other brand names, product names, or trademarks belong to their respective holders. Autodesk reserves the right to alter product and services offerings, and specifications and pricing at any time without notice, and is not responsible for typographical or graphical errors that may appear in this document. © 2012 Autodesk, Inc. All rights reserved.