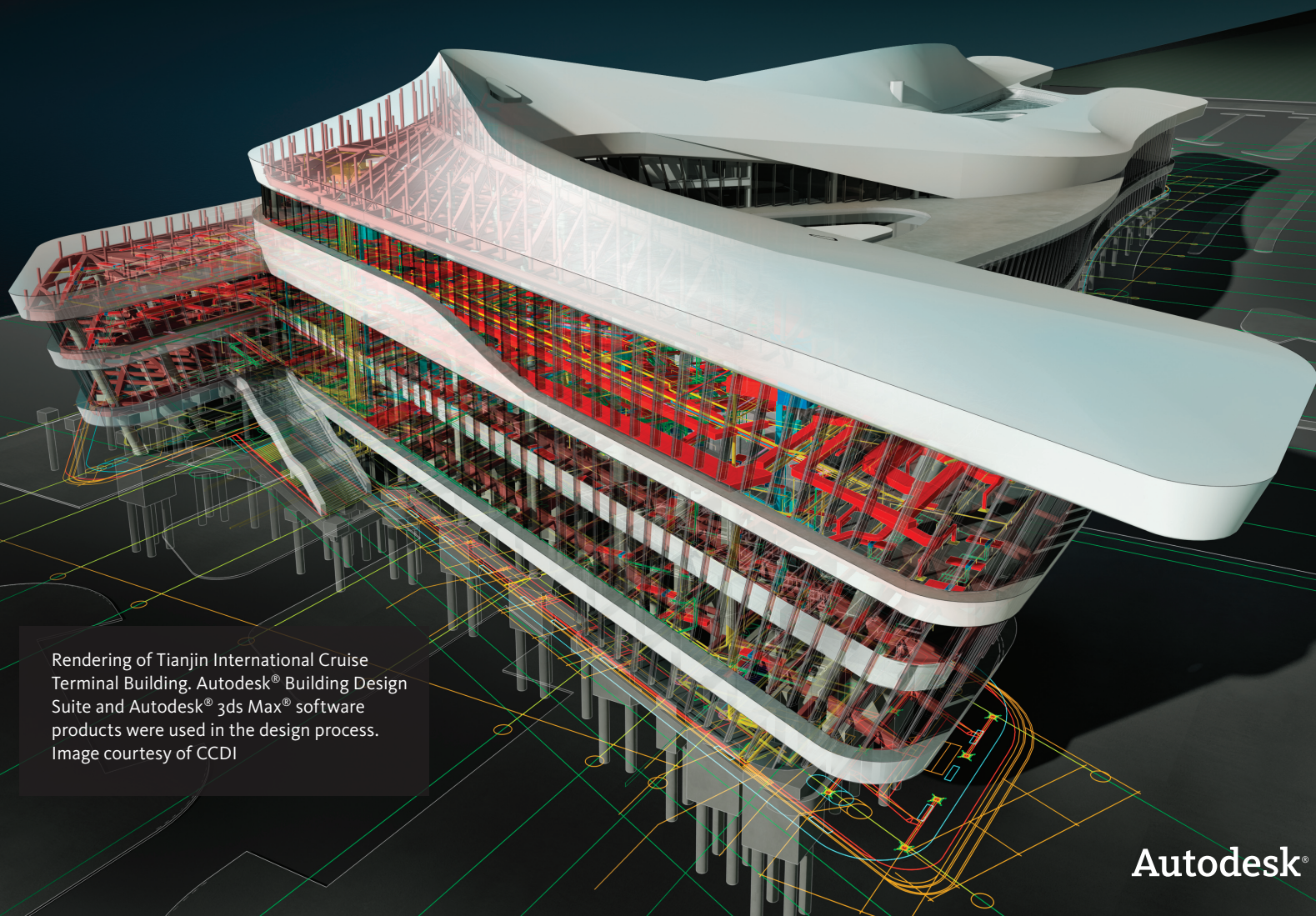


Autodesk® Building Design Suite

The flexibility to innovate in one
cost-effective package



Rendering of Tianjin International Cruise Terminal Building. Autodesk® Building Design Suite and Autodesk® 3ds Max® software products were used in the design process. Image courtesy of CCDI

Autodesk®

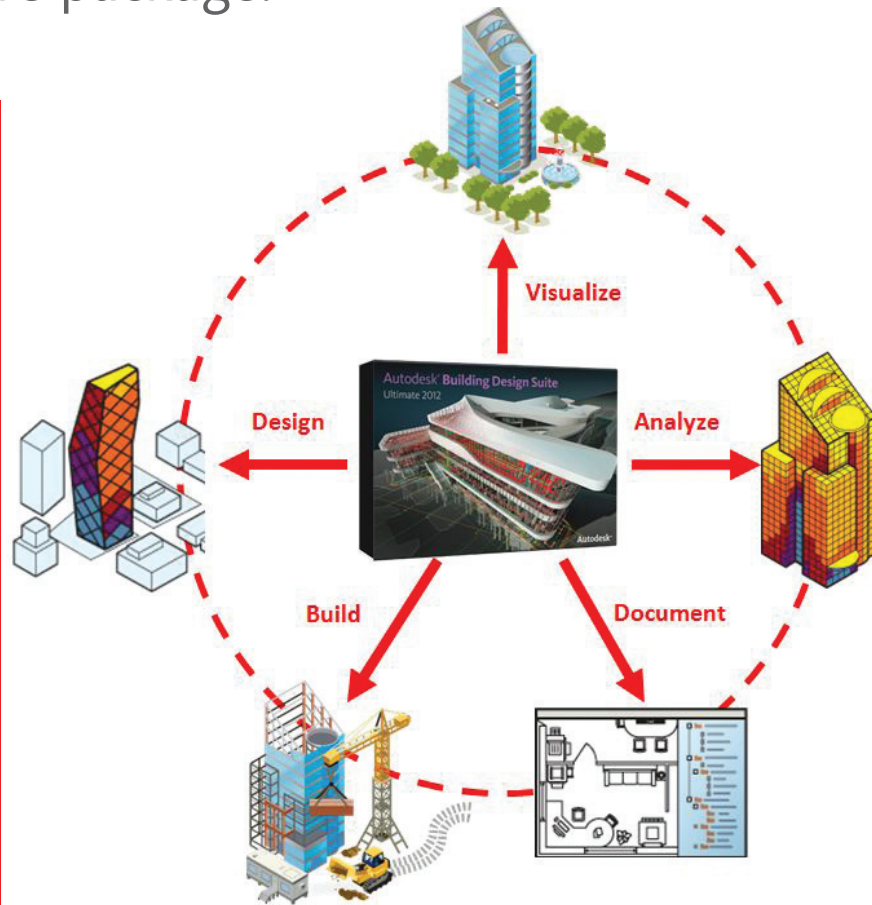
Exceptional value and competitive advantage.

Autodesk® Building Design Suite is a comprehensive software solution, combining the tools you need for both CAD and Building Information Modeling (BIM) workflows in one flexible, cost-effective package.

Are you facing these issues?

- Need to be more competitive.
- Constantly under pressure to control costs and do more with less.
- Tired of separately deploying, installing, and managing non-integrated software tools.
- Want to compete for projects that feature BIM workflows, but you use CAD.
- Need an economical entry point for BIM.
- Looking to get more out of your current investment in the BIM process.
- Want to collaborate more effectively with project team members.
- Struggling to manually coordinate your design with design data in different file formats.
- Need the competitive edge of high-end visualizations and walkthroughs.
- Spending too much time trying to communicate your design.
- Need multidiscipline design software to more easily work with design partners.
- Want to improve constructability and reduce rework costs.

Learn how Autodesk Building Design Suite can help you overcome these issues and accelerate your path to new business.



Autodesk Building Design Suite gives you the power of BIM, with tools for modeling, visualization, and documentation all in a cost-effective solution so you can compete for new work, whether the project requires CAD or BIM.

Three editions of the Autodesk Building Design Suite are available to meet your particular business needs and offer you the depth and breadth of the Autodesk portfolio.

Autodesk® Building Design Suite Standard:

Combines AutoCAD and the AutoCAD products specifically created for building designers, drafters, and detailers who need a foundational set of tools to efficiently design, document, and share drawings in the DWG file format in a single economical and convenient package.

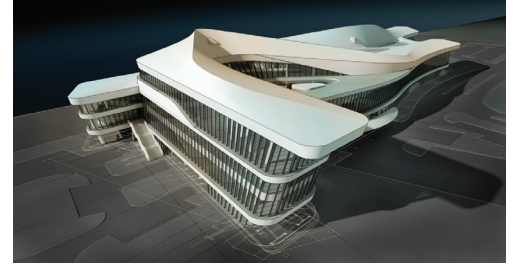
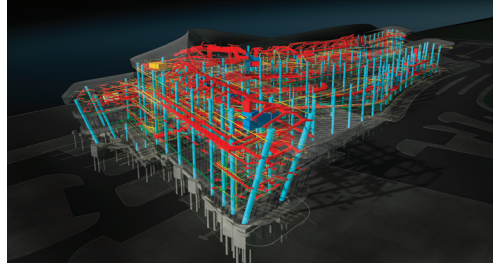
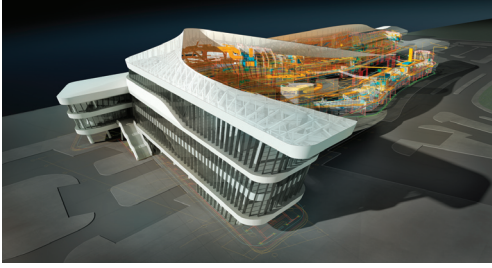
Autodesk® Building Design Suite Premium:

For architects and engineers who need an optimized set of tools including the power of Building Information Modeling (BIM), the familiarity of AutoCAD software applications for efficient documentation, and Autodesk 3ds Max Design software for compelling visualizations in a single economical and convenient package.

Autodesk® Building Design Suite Ultimate:

Delivers the full power of BIM with an advanced set of tools that extend beyond design into construction. Ideally suited for construction professionals, this edition builds on the Premium edition by including Autodesk Navisworks Manage software for an integrated approach to multidisciplinary coordination; Autodesk Inventor to collaborate more effectively with building product manufacturers and fabricators; and Autodesk Quantity Takeoff for use in design-to-cost-estimating workflows.

The Cost Effective Path to BIM.



Autodesk Building Design Suite offers a comprehensive set of tools to manage all phases of design and construction at an exceptional value.

AutoCAD® design and documentation software is one of the world's leading 2D and 3D CAD tools.

AutoCAD® Architecture, AutoCAD® MEP, and AutoCAD® Structural Detailing software helps you efficiently design, document, and share drawings using authentic, reliable DWG technology.

Autodesk® Showcase® helps you market and present your designs by transforming digital models into photorealistic imagery and immersive, interactive presentations.

Autodesk® SketchBook® Designer gives you an effective tool for design illustration and graphic communication.

Autodesk® Revit® Architecture software is the BIM solution built for architects that helps you deliver higher-quality, more accurate model-based architectural designs.

Autodesk® Revit® MEP BIM software for mechanical, electrical, and plumbing (MEP) engineers provides an integrated design, analysis, and documentation tool to support accurate and efficient building systems projects from concept to construction.

Autodesk® Revit® Structure BIM software for structural engineering helps you to more confidently predict the performance of your structural designs and more clearly communicate your design intent to project team members and owners.

Autodesk® 3ds Max® Design software lets you rapidly review design concepts, more accurately analyze daylight effects, and create high-impact marketing visuals.

Autodesk® Navisworks® Manage software helps you integrate 3D models and multifformat data so you can better coordinate disciplines, resolve conflicts, and plan projects virtually before construction or renovation begins.

Autodesk® Quantity Takeoff software helps you efficiently perform material quantifications from design data and high-quality images for a smoother design-to-cost workflow.

Autodesk® Inventor® software lets you collaborate with manufacturers and fabricators that produce building components to understand and capture design intent.

Autodesk Building Design Suite helps you:

- Move to BIM at your own pace
- Maximize the CAD and BIM investments you've already made.
- Leverage information inside the intelligent 3D model to create better buildings.
- Use integrated analysis to inform your design and construction decisions.
- Produce compelling visualizations and walkthroughs to market your ideas more successfully.
- Create consistent, higher-quality construction documentation and as-built models.
- Accelerate your project schedules and decrease your costs.
- Improve control over your project outcomes with valuable insight across the building lifecycle.



Autodesk Building Design Suite Standard

- AutoCAD®
- AutoCAD® Architecture
- AutoCAD® MEP
- AutoCAD® Structural Detailing
- Autodesk® Showcase®
- Autodesk® SketchBook® Designer



Autodesk Building Design Suite Premium

- AutoCAD®
- AutoCAD® Architecture
- AutoCAD® MEP
- AutoCAD® Structural Detailing
- Autodesk® Showcase®
- Autodesk® SketchBook® Designer
- Autodesk® Revit® Architecture
- Autodesk® Revit® MEP
- Autodesk® Revit® Structure
- Autodesk® 3ds Max® Design



Autodesk Building Design Suite Ultimate

- AutoCAD®
- AutoCAD® Architecture
- AutoCAD® MEP
- AutoCAD® Structural Detailing
- Autodesk® Showcase®
- Autodesk® SketchBook® Designer
- Autodesk® Revit® Architecture
- Autodesk® Revit® MEP
- Autodesk® Revit® Structure
- Autodesk® 3ds Max® Design
- Autodesk® Navisworks® Manage
- Autodesk® Quantity Takeoff
- Autodesk® Inventor®

AECOM recognizes the value of BIM and its ability to enhance project collaboration to deliver better, more sustainable project designs. Autodesk is one of our primary strategic partners in meeting these goals.

— Brion Boucher, AIA, LEED AP
Associate Vice President, Director of Design Technologies
AECOM, Planning Design + Development Group

Learn More or Purchase

Access specialists worldwide who can provide product expertise, a deep understanding of your industry, and value that extends beyond your software. To license Autodesk Revit Architecture software, contact an Autodesk Authorized Reseller. Locate a reseller near you at www.autodesk.com/reseller.

Autodesk Learning and Education

From instructor-led or self-paced classes to online training or education resources, Autodesk offers learning solutions to fit your needs. Gain access to free* software if you are a student or educator. Get expert guidance at an Autodesk Authorized Training Center (ATC®) site, access learning tools online or at your local bookstore, and validate your experience with Autodesk Certification. Learn more at www.autodesk.com/learning.

Autodesk Subscription

Autodesk® Subscription allows customers to extend the value of their software investment with access to the latest releases, powerful web services, and expedited technical support. Learn more at www.autodesk.com/subscription.

Image courtesy of CCDI

Autodesk, AutoCAD, Showcase, SketchBook, Revit, 3ds Max, Navisworks, and Inventor are registered trademarks or trademarks of Autodesk, Inc., and/or its subsidiaries and/or affiliates in the USA and/or other countries. All other brand names, product names, or trademarks belong to their respective holders. Autodesk reserves the right to alter product and services offerings, and specifications and pricing at any time without notice, and is not responsible for typographical or graphical errors that may appear in this document. © 2011 Autodesk, Inc. All rights reserved. BR0D1-000000-MZ01